

# MEMORIAL DAY savings

# NATIONAL WHOLESALE LIQUIDATORS

**BROOKLYN**

2201 59th Street  
Brooklyn, NY 11204

MON-SAT 9 am - 9 pm • SUN. 9 am - 8 pm  
718-307-0007

SALE DATES: 5/16/24 - 5/28/24

**WINDOW AIR CONDITIONERS**  
ALL WITH REMOTE. MODERN DESIGN.



6K BTU **\$179<sup>99</sup>**



8K BTU **\$219<sup>99</sup>**



10K BTU **\$269<sup>99</sup>**

8 PC. OUTDOOR PATIO SET  
RECTANGULAR TABLE,  
6 CHAIRS & UMBRELLA



**\$199<sup>99</sup>**  
COMPARE AT \$250 & UP

WICKER PATIO SET  
LOVESEAT, 2 CHAIRS & TABLE.  
CUSHIONS INCLUDED.



**\$299<sup>99</sup>**  
COMPARE AT \$300

SHADE TECH  
10' X 10' INSTANT BLUE CANOPY  
100 SQ. FT. OF SHADE. PERFECT FOR 8-12 PEOPLE.  
MADE OF DURABLE STEEL CONSTRUCTION.  
#167601

COMPARE AT \$145  
**\$89<sup>99</sup>**

3 SEAT PATIO SWING WITH CANOPY  
#AA79266

**\$99<sup>99</sup>**

9' CANOPY UMBRELLA  
FIBERGLASS RIBS. EASY CRANK LIFT & AUTO TILT. SYSTEM WEATHER RESISTANT FABRIC. ASSORTED COLORS.

COMPARE AT \$130  
**\$59<sup>99</sup>**

18" UMBRELLA BASE  
10 KG.  
COMPARE AT \$42

**\$24<sup>99</sup>**

DURAFLAME 27" STAINLESS SMOKELESS FIRE PIT

**\$89<sup>99</sup>**  
COMPARE AT \$300 & UP

HOMEPONTE  
16" STAND FAN  
3 SPEED OSCILLATING. HEIGHT & TILT ADJUSTMENT.



COMPARE AT \$32  
**\$17<sup>99</sup>**

MR. BAR-B-Q  
22" CHARCOAL KETTLE GRILL  
HINGED LID. ASH CATCHER. CONDIMENT/TOOL BASKET. PORCELAIN COATED STEEL FIRE BOWL.



COMPARE AT \$80  
**\$59<sup>99</sup>**



KINGSFORD LIGHTER FLUID  
32 OZ. **\$4<sup>99</sup>**

**R & A JEWELERS, INC.**  
FINE 14K AND 18K GOLD JEWELRY  
GIA CERTIFIED DIAMONDS  
GRADUATE GEMOLOGIST ON PREMISES CELEBRATING 20 YEARS IN THE SAME LOCATION!  
ALEX 718-621-4470  
OPEN MON-SUN. 11AM TO 6 PM, CLOSED WEDS.  
2201 59TH STREET, INSIDE NATIONAL WHOLESALE

**WE BUY GOLD**  
TOP DOLLAR PAID! GUARANTEED! FREE ESTIMATES!

GALLON MILK ALL VARIETIES  
ALWAYS AT THE LOWEST ALLOWABLE PRICE  
**\$3<sup>99</sup>**

**Tide**  
3.4 LITER ORIGINAL 115 OZ. 80 LOADS  
**\$14<sup>99</sup>**

JACKS GRADE AA EXTRA LARGE EGGS  
LIMIT 5 DOZ.  
**\$1<sup>69</sup>** DOZ.

**CLOROX**  
1 GAL. DISINFECTING BLEACH  
**\$5<sup>99</sup>**

CAPRISUN  
10 PACK CAPRISUN  
**2/\$5**

**Gain Downy**  
50 OZ. FABRIC SOFTENER  
**\$3<sup>99</sup>**

SORRENTO  
3 LITER SORRENTO EXTRA VIRGIN OLIVE OIL  
LIMIT 2  
**\$12<sup>99</sup>**

PANTENE SHAMPOO OR CONDITIONER  
25.1 TO 27.7 OZ. ASSORTED TYPES  
**\$6<sup>99</sup>**

POLAND SPRING OR DEER PARK  
40 PACK WATER  
**\$7<sup>99</sup>**  
+ DEPOSIT LIMIT 2

**Elegant**  
500 CT. ELEGANT LUNCH NAPKINS  
**\$2<sup>49</sup>**

**Scott**  
36 ROLLS TOILET TISSUE  
1000 SHEET ROLLS  
**\$29<sup>99</sup>**

# PANTRY SAVINGS

**WE ACCEPT EBT**



**128 OZ. HAWAIIAN PUNCH RED FRUIT PUNCH**  
+ BEV. TAX IN PA.  
**\$2<sup>99</sup>**

**IBERIA COCONUT WATER WITH PULP**  
16.9 OZ.  
+ BEV. TAX IN PA.  
**5/\$4**

**96 OZ. OCEAN SPRAY COCKTAIL JUICE**  
+ BEV. TAX IN PA.  
**\$3<sup>99</sup>**

**2 LITER C&C COLA ALL VARIETIES**  
+ BEV. TAX IN PA.  
**99¢**

**1 LITER VINTAGE SELTZER ALL VARIETIES**  
+ BEV. TAX  
**69¢**

**LUIGI VITELLI PASTA ALL VARIETIES**  
1 LB. BAG  
**4/\$5**

**PRINGLES ASSORTED**  
5.2 OZ.  
**\$2<sup>29</sup>**

**RITZ CRACKERS ORIGINAL**  
10.58 OZ.  
**2/\$5**

**KEEBLER EXPORT SODAS CRACKERS**  
GALLETAS ESPECIALES  
28 OZ. TIN  
**\$5<sup>99</sup>**

**DANISH STYLE BUTTER COOKIES**  
12 OZ. TIN  
**2/\$4**

**BRAGG ORGANIC RAW APPLE CIDER VINEGAR**  
16 OZ.  
**\$3<sup>99</sup>**

**METRO DEGLET NOOR PITTED DATES**  
24 OZ.  
**2/\$5**

**KRAFT MACARONI & CHEESE ORIGINAL FLAVOR**  
7.25 OZ. BOX  
**\$1<sup>00</sup>**

**CAFE BUSTELO COFFEE**  
10 OZ. CAN  
**\$3<sup>99</sup>**

**NESCAFÉ INSTANT COFFEE ORIGINAL**  
7 OZ./200 G.  
**\$4<sup>99</sup>**

**10 LB. DEER BASMATI RICE**  
**\$9<sup>99</sup>**

**IBERIA SAZON WITH CILANTRO & ACHIOTE**  
6.34 OZ.  
**\$2<sup>99</sup>**

**MASECA CORN FLOUR**  
4.4 LB.  
**\$3<sup>99</sup>**

**128 OZ. KRASDALE WHITE VINEGAR**  
**\$2<sup>99</sup>**

**5 LB. COSTERA BROWN SUGAR**  
**\$4<sup>99</sup>**

**QUAKER 10 LB. OLD FASHIONED OATS**  
**\$13<sup>99</sup>**

**Mazola 2.65 GAL. CORN OIL**  
**\$34<sup>99</sup>**

**LIPTON BLACK TEA BAGS**  
100 CT. BOX  
**\$3<sup>99</sup>**

**2 LITER IBERIA OLIVE OIL BLEND**  
**\$7<sup>99</sup>**

**24 OZ. GOLDEN BLOSSOM HONEY**  
PURE U.S. PREMIUM HONEY  
**\$8<sup>99</sup>**

# HEALTH & BEAUTY AIDS



**HUGGIES**  
56 CT.  
BABY WIPE  
PURE

**\$1 49**



**CETAPHIL**  
MOISTURIZER  
20 OZ. LOTION  
-OR-  
16 OZ. CREAM

**\$11 99**



**REVLON**  
COLORSILK  
HAIR COLOR  
ASSORTED COLORS

**\$3 49**



**Vaseline**  
INTENSIVE  
CARE  
LOTION  
20.3 OZ.

**\$4 99**



**Crest**  
PRO HEALTH  
MOUTHWASH  
1 LITER

**\$4 99**



**SAFEGUARD**  
LIQUID  
HAND  
SOAP  
ASSORTED  
TYPES  
15.5 OZ.  
PUMP

**\$2 99**



**SAFEGUARD**  
FOAMING  
BODY  
WASH  
16.9 OZ.  
PUMP

**\$2 99**



**AXE**  
BODY SPRAY  
ASSORTED 150 ML.

**\$2 99**



**ARM & HAMMER**  
SPORT  
DEODORANT  
2.6 OZ. STICK

**\$2 99**



**HARD CANDY**  
MAKEUP  
ASSORTED BLUSH,  
CONCEALER,  
EYESHADOW,  
CORRECTOR

**\$1 99**



**SUAVE** DEODORANT &  
ANTIPERSPIRANT  
1.4 OZ.

**\$2 99**



**Colgate**  
3 PACK  
TOOTHPASTE  
3X 6.5 OZ. TUBES.  
REGULAR OR FRESH.

**\$4 99**



**always**  
PADS  
ASSORTED SIZES  
& COUNTS

**\$4 99**



**Johnson's**  
BABY  
SHAMPOO  
750 ML.  
WITH PUMP

**\$3 99**



**Colgate**  
TOOTH-  
BRUSHES  
4 PK. GENTLE  
SENSITIVE OR  
6 PK. ZIG ZAG  
ANTIBACTERIAL.

**\$2 49**

# HOUSEHOLD CLEANERS



**PLEDGE**  
ORANGE  
ENHANCING  
POLISH  
9.7 OZ.

**\$2 99**



**Lysol**  
NEUTRA AIR  
2-IN-1  
DISINFECTANT  
SPRAY  
10 OZ.

**\$3 99**



**SPRAYWAY**  
GLASS  
CLEANER  
19 OZ.  
AEROSOL

**\$2 99**



**CLOROX**  
TOILET  
BOWL  
CLEANER  
24 OZ.

**\$2 99**



**CLOROX**  
DISINFECTANT  
CLEANER  
30-32 OZ.  
TRIGGER

**\$3 99**



**febreze**  
AIR  
FRESHENING  
300 ML.

**\$2 99**



**AIR WICK**  
FRESHMATIC  
REFILLS  
250 ML.  
6.2 OZ.

**\$2 99**



**glade**  
2 PK. GLADE  
PLUG-IN  
REFILLS  
ENTIRE SELECTION

**\$3 99**



**COMBAT**  
MAX  
12 CT.  
COMBAT  
MAX BAIT  
STATIONS  
+ 1 SYRINGE

**\$7 99**



**Raid**  
ANT &  
ROACH  
SPRAY  
17.5 OZ.

**\$4 99**

# YOUR HEADQUARTERS FOR SUMMER FUN



**LATTICE PANEL PATIO/GARDEN STEEL BENCH**  
4 FT. WIDE  
**\$69<sup>99</sup>**  
COMPARE AT \$130



**QUAD CAMP CHAIR WITH VELCRO ASSORTED COLORS #OC500S**  
**\$11<sup>99</sup>**



**GRACIOUS LIVING FOLDING TABLE**  
FOLDS FOR STORAGE. EASY CARE WEATHER RESISTANT RESIN.  
COMPARE AT \$20  
**\$6<sup>99</sup>**



**INTEX BEACH DAYS SNAPSET INSTANT KIDS SWIMMING POOL**  
COMPARE AT \$18.99 @ TARGET  
**\$9<sup>99</sup>**



**INTEX SWIM CENTER FAMILY INFLATABLE POOL**  
120"X72"X22" AGES 6+ #5848EP  
**\$34<sup>99</sup>**



**SUNNY ISLES FOLDING ZERO GRAVITY SIDE TABLE WITH CUP HOLDERS. #RXTV-1921**  
**\$9<sup>99</sup>**



**MARBELLA 35" ROUND FOLDING STEEL TABLE**  
**\$49<sup>99</sup>**



**CLASSIC FOLDING CHAIR**  
**WOW!**  
**\$14<sup>99</sup>**



**50' GreenThumb NEVER-KINK Heavy Duty HOSE**  
**\$32<sup>99</sup>**



**HUGE SELECTION OF WATER GUNS, WATER TOYS, BUBBLE TOYS AT THE LOWEST PRICES!**



**2 GAL. DELUXE WATERING CAN**  
MADE IN USA  
**\$6<sup>99</sup>**  
COMPARE AT \$12



**ALL HARD COOLERS 5L to 60L ASSORTED STYLES & COLORS. LARGE SELECTION!**  
**25% OFF**  
Our Already LOW Prices



**BBQ GRILL MAT**  
2 PK. COPPER BBQ GRILL MATS UP TO 500°F  
**\$4<sup>99</sup>**



**Scotts CLASSIC SUN & SHADE GRASS SEED 3 LB. 1200 SQ. FT.**  
**\$12<sup>99</sup>**



**GRILL & ZONE 3 PC. STAINLESS STEEL BBQ TOOL SET**  
COMPARE AT \$20 & UP  
**\$9<sup>99</sup>**



**GRILL & ZONE 18" WOOD BBQ BRUSH BRASS BRISTLES. STEEL SCRAPER.**  
COMPARE AT \$7  
**\$4<sup>99</sup>**



**GRILL & ZONE COOKING GRATE ASSORTED SIZES**  
COMPARE AT \$23  
**\$4<sup>99</sup>**



**TIKI BITEFIGHTER CITRONELLA WAX CANDLE 17 OZ. METAL BUCKET**  
COMPARE AT \$13  
**\$4<sup>99</sup>**



**OFF! OUTDOOR INSECT & MOSQUITO REPELLENT FOGGER COVERS 9000 SQ. FT.**  
COMPARE AT \$9  
**\$5<sup>99</sup>**



**ORTHO ANT, ROACH & SPIDER SPRAY 14 OZ.**  
COMPARE AT \$7  
**\$4<sup>99</sup>**



**Coleman PROPANE CAMPING CYCLINDER 16 OZ.**  
**\$5<sup>99</sup>**



**MR. BAR-B-Q DISPOSABLE INSTANT CHARCOAL GRILL**  
**\$5<sup>99</sup>**



**2 PK. LED SOLAR PATH LIGHTS BLACK STAINLESS STEEL**  
**\$6<sup>99</sup>**



**SOLAR LED STRING LIGHTS 16 CT. EDISON BULBS**  
**\$5<sup>99</sup>**



**LOW VOLTAGE LED FLOOD LIGHT BLACK ALUMINUM. 900 LUMENS. 16 WATT**  
COMPARE AT \$30 & UP  
**\$4<sup>99</sup>**



**ELECTRONIC OUTDOOR BUG ZAPPER**  
**\$9<sup>99</sup>**

# FURNITURE DEPARTMENT



**2 PC. SOFA & LOVESEAT SET**  
RICH, TRADITIONAL STYLING.  
DURABLE TOBACCO FINISH  
FAUX LEATHER. #U9521  
**\$999<sup>99</sup>**



**5 PC. NATURAL WHITE WOOD  
DINING SET**  
#D0808NW  
**\$199<sup>99</sup>**



**7 PC. FORMAL  
DINING SET**  
#D3711-7IN1  
**\$499<sup>99</sup>**



**12"X12" SELF STICK  
VINYL TILES**  
PACK OF 20 SQ. FT.  
ASSORTED STYLES.  
**\$9<sup>99</sup>**



**LARGE PUSH PULL-OUT  
RECLINER**  
#700D  
**\$199<sup>99</sup>**



**TUFTED LINEN UPHOLSTERED  
LOVESEAT  
BENCH**  
#3751D COMPARE AT \$280  
**\$149<sup>99</sup>**



**5 PC. DINETTE  
SET**  
OAK #D3535-5IN1  
**\$299<sup>99</sup>**



**GRASS  
RUG**  
GREAT FOR  
PATIOS OR  
ANY OUTDOOR  
SPACE

**4x6 \$24<sup>99</sup>**  
**6x8 \$49<sup>99</sup>**  
**6x12 \$99<sup>99</sup>**



**COMPUTER  
STATION  
WITH PULL-OUT  
KEYBOARD  
SHELF.**  
#CD76  
COMPARE AT  
\$100 & UP  
**\$19<sup>99</sup>**



**WORK  
STATION  
WITH PULL-OUT  
KEYBOARD  
SHELF AND  
WHEELS.**  
#CD180  
COMPARE AT  
\$75 & UP  
**\$14<sup>99</sup>**



**FILE  
CABINET  
ON  
WHEELS**  
#FC1491  
COMPARE AT  
\$50 & UP  
**\$19<sup>99</sup>**



**ENTERTAINMENT  
STAND  
4 TIERS &  
ON WHEELS.**  
#TV87  
COMPARE AT  
\$40 & UP  
**\$14<sup>99</sup>**



**ROLLING  
TV STAND**  
23.5"X15.75"X25.5"  
COMPARE AT  
\$50 & UP  
**\$19<sup>99</sup>**



**4 CUBE  
SHELVING  
STORAGE**  
#CB400  
**\$9<sup>99</sup>**



**TALL  
BUFFET WINE  
CABINET**  
#CB29317  
COMPARE AT  
\$100 & UP  
**\$29<sup>99</sup>**



**DESK**  
39"X15.5"X30"  
#CD1280  
COMPARE AT  
\$50 & UP  
**\$14<sup>99</sup>**



**INDOOR/OUTDOOR  
HEAVY DUTY  
RESIN TOP  
BANQUET TABLES**  
FOLD-IN-HALF  
COMPARE AT  
\$59-\$89



**6 CUBE  
SHELVING  
STORAGE**  
#CB600  
**\$14<sup>99</sup>**



**ACCENT  
CABINET  
WITH 2 GLASS  
PANED DOORS.**  
#SS21-SPT-013  
COMPARE AT  
\$200 & UP  
**\$39<sup>99</sup>**

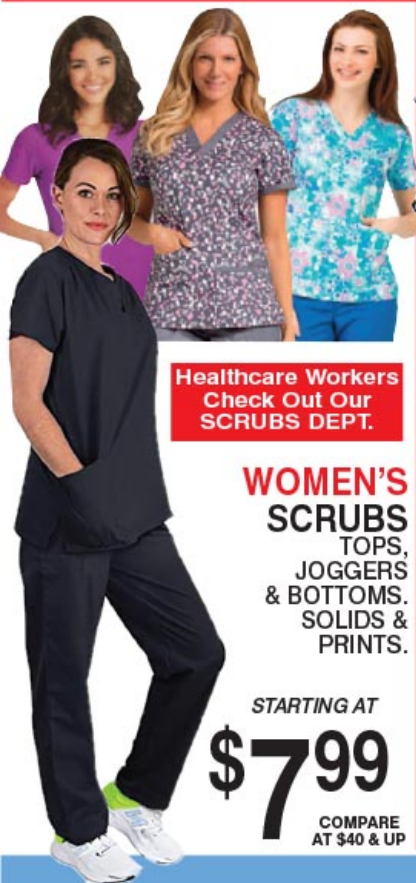


**END TABLE**  
#ET639  
COMPARE AT  
\$30 & UP  
**\$12<sup>99</sup>** EA.



**\$29<sup>99</sup> \$39<sup>99</sup> \$49<sup>99</sup>**

# LADIES CLOTHING



**Healthcare Workers  
Check Out Our  
SCRUBS DEPT.**

**WOMEN'S  
SCRUBS  
TOPS,  
JOGGERS  
& BOTTOMS.  
SOLIDS &  
PRINTS.**

STARTING AT  
**\$7<sup>99</sup>**  
COMPARE AT \$40 & UP



**MISSES & JR'S  
FAMOUS MAKER  
SWIMSUITS**  
COMPARE AT \$30.00

**\$9<sup>99</sup>**



**MISSES  
& JR'S  
TANK  
TOPS**

COMPARE AT \$10-\$20

STARTING AT  
**\$1<sup>99</sup>**



**FAMOUS  
MAKER  
LADIES  
FASHION TOPS**  
COMPARE AT \$24.99

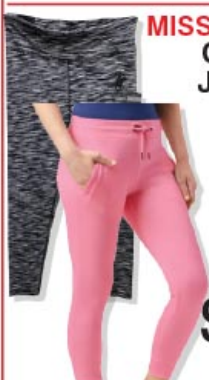
STARTING AT  
**\$4<sup>99</sup>**



**MISSES & JR'S  
FASHION  
SUMMER DRESSES**  
STARTING AT

COMPARE AT \$30

**\$6<sup>99</sup>**



**MISSES & JR'S  
CAPRIS &  
JOGGERS**

COMPARE AT \$20.00

STARTING AT  
**\$4<sup>99</sup>**



**MEN'S &  
LADIES  
SANDALS**

STARTING AT  
**\$4<sup>99</sup>**



**ALL BRAS & PANTIES  
20% OFF**

# MEN'S CLOTHING



**FAMOUS MAKER  
MEN'S T-SHIRTS  
& POLO SHIRTS  
PRINTS, SOLIDS &  
STRIPE**

STARTING AT  
**\$5<sup>99</sup>**  
COMPARE AT \$29.99



**MEN'S  
SWIMSUITS**  
COMPARE AT \$30

STARTING AT  
**\$6<sup>99</sup>**



**MEN'S  
ACTIVE  
SHORTS**  
COMPARE AT \$25

STARTING AT  
**\$4<sup>99</sup>**



**MEN'S  
DENIM JEANS**  
COMPARE AT \$40

STARTING AT  
**\$7<sup>99</sup>**



**MEN'S  
CASUAL  
SHORTS**

COMPARE AT \$40

STARTING AT  
**\$9<sup>99</sup>**



**MEN'S  
TANK TOPS**  
COMPARE AT \$20

STARTING AT  
**\$4<sup>99</sup>**



**MEN'S  
PRINTS &  
SOLIDS  
SLEEP  
LOUNGE  
PANTS**

COMPARE AT \$20.00

STARTING AT  
**\$5<sup>99</sup>**



**Hanes**  
FRUIT & LOOM  
**MEN'S 3-6 PK.  
PACKAGED  
UNDERWEAR**  
SLIGHTLY IRREGULAR

STARTING AT  
**\$7<sup>99</sup>**



**ALL 3 & 6 PACKS  
MEN'S & LADIES SOCKS**

**20% OFF**

# HOUSEWARES & LINENS DEPARTMENT SAVINGS

**AS SEEN ON TV**

**ORIGINAL SAFETY CAN EXPRESS**

**\$14.99**

**AS SEEN ON TV**

**HEMPVANA POSTURE SUPPORT**

**\$9.99**

**ALL BATHROOM TOWELS**  
HAND TOWELS, BATH TOWELS, WASHCLOTHS

**20% OFF**

OUR REGULAR LOW PRICES

**ANTI FATIGUE FLOOR MATS**  
18" X 30"

**\$4.99**

**HILTON RESORTS**  
2 PK. PILLOWS

**\$14.99**

**Rubbermaid**

**3 PK. 2.35 CUP TAKE ALONGS DIVIDED SNACK CONTAINERS**

**\$2.49**

**3 PC. KITCHEN CURTAIN SETS**  
ASSORTED PRINTS

**\$5.99**

**BARRON 100% BLACK-OUT GROMMET PANELS**  
ASSORTED COLORS

**\$6.99** <sup>84"</sup>  
**\$7.99** <sup>90"</sup>

**SHAGGY RUGS**  
ASSORTED SIZES FROM 1100 TO 1500 SQ. IN.

**\$7.99**

**18/10 STAINLESS STEEL TOP QUALITY 20 PC. FLATWARE SET**

**\$9.99**

**Pami**

**400 CT. PLASTIC CUTLERY SPOONS, FORKS, KNIVES**

**\$3.49**

**GOODTIMES**  
50 CT. RED PARTY CUPS  
16 OZ.

**\$2.99**

**JACQUARD FABRIC SHOWER CURTAINS**  
ASSORTED

**\$5.99**

**2 PC. FAUX FUR BATH MAT SETS**

**\$14.99**

**COMMERCIAL BAKING CLOSEOUT!! EXPERIENCE THE QUALITY DIFFERENCE!**

**SHEET PANS \$3.99**

**JELLY ROLL PANS \$2.99**

**LG. PIZZA PANS \$4.99**

**TEFLON LASAGNA PANS \$3.99**

**MASTER MECHANIC**

**11 PC. METRIC COMBINATION WRENCH SET**

**\$14.99**

**Rubbermaid**

**ROUGHNECK 45 GAL. WHEELED TRASH CAN WITH LID**

**\$42.99**

**O-Cedar**

**MICROFIBER TWIST MAX MOP**  
HANDS-FREE WRINGING. TANGLE PREVENTION. REMOVES OVER 99% OF BACTERIA.

COMPARE AT \$15

**\$9.99**

**FAMOUS BRANDS**

**ALL CARRY-ON LUGGAGE**  
HARD AND SOFT. SPINNERS. TSA LOCKS

**\$17.99**

**WD-40 PENETRANT SPRAY 11 OZ. \$5.99**

**Mobil OIL QUART 5W30, 5W40, 10W30, 10W40 \$3.99**

**CHEMOURS AUTOMOTIVE 134A FREON 12 OZ. \$9.99**

**Shell COOLANT GALLON \$5.99**

**PRIME WASHER FLUID 1 GALLON SUMMER BLEND \$1.99**

# SUMMER SAVINGS BLASTOFF!



**CHAFING DISH STAND**  
\$2<sup>99</sup>



**STERNO COOKING GEL** 79¢  
**LASAGNA PANS** 4/\$1  
**FULL SIZE PANS & OVAL ROASTERS** 79¢



**PLASTIC MOLDED PATIO TABLE**  
\$39<sup>99</sup>



**PERSONAL MINI AIR COOLER**  
BY HOME INNOVATIONS  
\$16<sup>99</sup>



**HISENSE 65" 4K UHD LED LCD TV**  
Hisense  
UHD \$329<sup>99</sup> Google TV




**SAMSUNG 70" 4K CRYSTAL UHD TV**  
#CU7000D  
\$499<sup>99</sup>



**6 PC. PATIO SET**  
4 CHAIRS, TABLE & UMBRELLA  
ROUND \$119<sup>99</sup> SQUARE \$129<sup>99</sup>



**PLASTIC STACKING CHAIRS**  
ASSORTED COLORS  
\$9<sup>99</sup>



**QFX AMPLIFIED 15" SPEAKER**  
WITH FM/BLUETOOTH, STAND & MIC.  
#MPX-1503  
\$59<sup>99</sup>



**QFX DUAL 12" RECHARGEABLE PARTY SPEAKER**  
PLUS TWS-BT/USB/SD/FM/RGB LED & MIC  
#PBX-1213  
\$99<sup>99</sup>



**2X15" PROFESSIONAL PA SPEAKER**  
#E-1500  
\$249<sup>99</sup>



**70" RECTANGULAR GLASS PATIO TABLE**  
\$79<sup>99</sup>



**TEXTILENE STACKING PATIO CHAIRS**  
ASSORTED COLORS  
#AA79248  
\$17<sup>99</sup>



**20" FOLDING SQUARE GLASS TOP TABLE**  
#AA79261  
\$19<sup>99</sup>



**COFFEE MATE ORIGINAL**  
35.2 OZ.  
\$5<sup>99</sup>



**HEINZ KETCHUP EZ SQUEEZE**  
44 OZ.  
\$3<sup>99</sup>



**CHIFLES PLANTAIN CHIPS OR STRIPS**  
12 OZ.  
\$3<sup>99</sup>



**24 CT. FREEZE POPS**  
2/\$5



**IBERIA JASMINE RICE**  
18 LB.  
\$12<sup>99</sup>



**NESCAFÉ Folgers INSTANT COFFEE**  
7-8 OZ.  
\$5<sup>99</sup>



**11'X11 SHELTERLOGIC GAZEBO**  
WITH ADDITIONAL AWNING.  
\$249<sup>99</sup>

**BROOKLYN**  
2201 59th Street  
Brooklyn, NY 11204  
Mon-Sat: 9 am to 9 pm • Sun: 9 am to 8 pm  
718-307-0007

**PENNSYLVANIA**  
900 Orthodox Street  
Philadelphia, PA 19124  
Mon-Sat: 9 am to 9 pm • Sun: 9 am to 8 pm  
215-288-3793  
SWEETENED BEVERAGE TAX APPLIES TO ALL BOTTLED JUICES THAT CONTAIN SUGAR

**PENNSYLVANIA**  
7101 Roosevelt Blvd.  
Philadelphia, PA 19149  
Mon-Sat: 9 am to 9 pm • Sun: 9 am to 8 pm  
215-848-0001  
SWEETENED BEVERAGE TAX APPLIES TO ALL BOTTLED JUICES THAT CONTAIN SUGAR

**BROOKLYN FURNITURE STORE**  
2235 59th Street  
Brooklyn, NY 11204  
Mon-Sat: 9 am to 9 pm • Sun: 9 am to 8 pm  
718-256-9200



Some illustrations may be for design purposes only. Not responsible for typographical errors. We reserve the right to limit quantities. All rebates subject to manufacturer's limitations. We do not accept manufacturer's coupons. NWL Reserves the right to limit quantities per sale at its reasonable discretion. NO RAINCHECKS

SALE DATES: 5/16-5/28/24

