



使用手冊/Owner's manual



HANDY Foldable 使用者手冊

前言

親愛的車友：

感謝您購買太平洋自行車股份有限公司之高級自行車產品，歡迎您加入我們的行列。

詳讀本手冊可以幫助您更了解愛車的保養重點及安全騎乘所必須注意的事項，確保車況處於最佳的騎乘狀態。

由於我們的自行車將持續更新改善，太平洋自行車保留變更的權利，因此可能會提供其他補充頁面，並更新官網資料，以確保您獲得最新信息。針對專屬零配件組立方式，也請至太平洋網站瀏覽或下載。

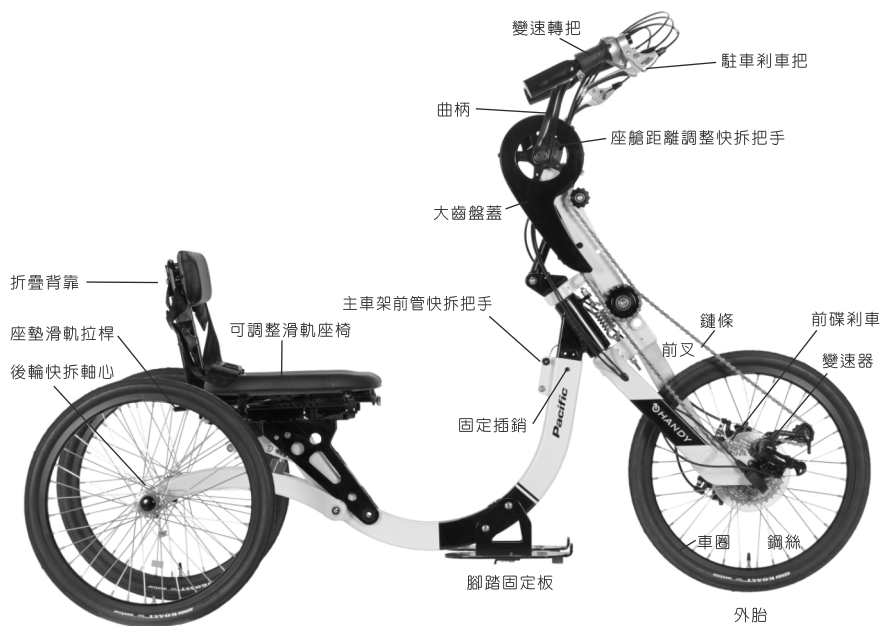
太平洋自行車網站: www.pacific-cycles.com

太平洋自行車會員網站: vip.pacific-cycles.com

太平洋自行車網路商城: store.pacific-cycles.com

在您購買/交車的授權經銷商有義務為您註冊車輛並提供購買證明。同時請參閱本手冊所附檢查表定期回到授權經銷商進行檢查，以保障您免費保固服務的權益。

各部零件名稱



上圖僅供車友參考，若您的愛車與上圖不同，請至太平洋自行車產品專屬網站 <http://www.pacific-cycles.com.tw> 查詢各車種詳細規格與各部名稱。

調整要領

HANDY要達到最佳的騎乘舒適度及使用安全，良好的座艙位置是很重要的。HANDY的座椅為前後活動式，可藉由固定滑軌的把手來調整前後。車頭轉向機構的高度亦可調整。正確的座墊位置及車頭把手高低都能調整，也都能夠為騎乘者帶來最舒適的座艙空間。騎乘時請繫上安全帶確保騎乘時安全。

安全注意事項

騎乘前

1. 每次騎乘前先做好車輛安全檢查，確保各部位的螺絲或快拆固定（座艙調整快拆把、後輪軸心、轉向系統等）。
2. 檢查車架及各部零件是否變形或損壞？
3. 調整車頭把手高度及觸及距離，確認車手可順利左右轉動。
4. 原地測試剎車功能，確保剎車器正常運作。
5. 調整座墊於適當位置，確認座墊滑軌固定把手有卡住不會滑動。
6. 檢查胎壓、胎紋是否正常？轉動車輪是否左右偏擺？鋼絲張力是否適當、有無鬆動？胎壓建議標準值(55-60 PSI)。
7. 請穿著明亮及不過度寬鬆的服裝，以防止衣物捲入行進間運轉中的組件。
8. 能夠充分熟悉自己愛車的功能性及騎乘操控性能。

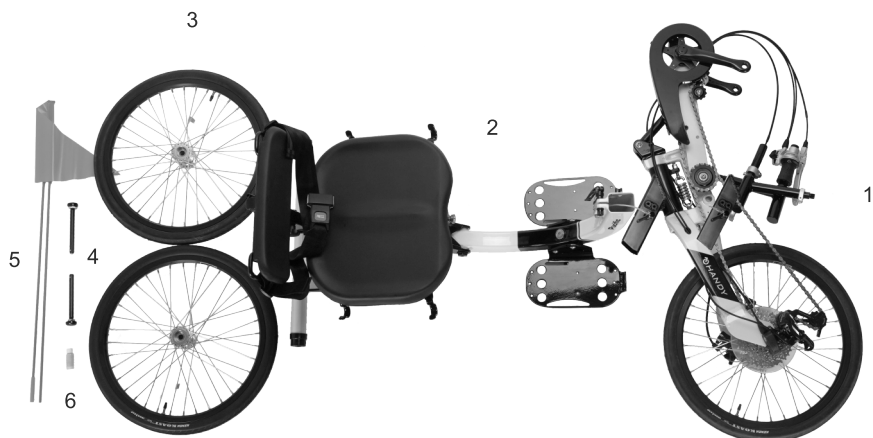
騎乘時

1. 請遵守交通道路法規，以免造成危險及受罰。
2. 請繫緊安全帶後再啟動。
3. 夜間騎乘，請務必加裝前燈、後警示燈及符合法規的反光片。
4. 行進間請平順剎車，避免急刹。
5. 須隨時注意停在路邊的車輛突然開門。
6. 行經路口時需注意路邊行人突然衝出。
7. 特別注意路面上坑洞、水溝蓋及凹凸不平的路面及障礙物。
8. 車輛有零件的損壞或異常現象，請立即停止騎乘，以策安全。
9. 騎乘時請戴上通過安全標準的安全帽，以確保您自身安全。
10. 請勿在把手掛載行李或寵物籃以免造成失控。

騎乘後

1. 請依照手冊建議，進行零件的基礎保養及檢查，以隨時保持車輛的性能與安全。
2. 如發現車輛有異音、零件鬆動或損壞，應立即至經銷商維修。
3. 請避免改裝自行車，以免造成車子損壞發生危險喪失產品保固服務。

開箱組裝



開箱後取出車架及其他零件

1. 前車頭組(傳動系統、轉向把手、前輪)
2. 主車身(含腳踏固定板及座椅組)
3. 後輪組
4. 後輪軸心
5. 安全旗幟
6. 補漆瓶

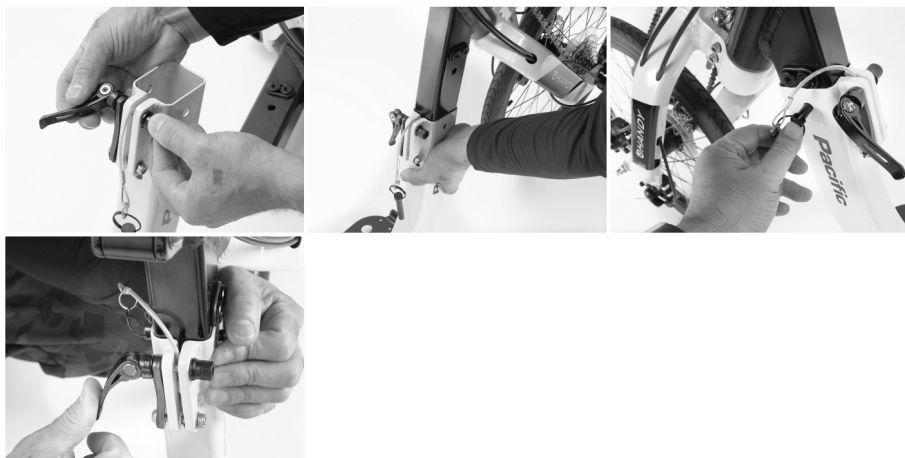


我們建議由專業合格的車店技師為您做車輛的組裝及維修您的愛車。
在組裝及騎乘前請詳閱此手冊之說明。

Step 1. 將左右後輪裝入軸心後以按壓軸心方式將後輪與車架結合。



Step 2. 稍微鬆開主車架前管快拆把手，將車頭組與車架主管結合；將安全插銷穿過車架主管後再以快拆把手迫緊。



Step 3. 用鎖固方式將左右把手組與曲柄結合。



Step 4. 鬆開座艙調整快拆把手，調整至合適座艙距離後將把手關上。



Step 5. 收折座椅：鬆開背靠固定鈕，將背靠上拉後往前傾倒；將坐墊滑軌拉桿外拉後將坐墊調至最前方，鬆開座椅下方扣件將椅子向前傾倒，確認椅墊的鐵鈕有吸住車架磁鐵。



Step 6. 精簡收納：自車架後方將後叉與本體分離，將車稍微向上提讓輪子往前，當輪子在座椅下方時放下車身即完成收折。



Step 7. 最後檢查所有的快拆、螺絲都有鎖緊，握緊剎把確認剎車的駐車鈕可以按下卡住。



定期保養檢查表

檢查項目	每次騎乘	每六個月	其他
全車各部件快拆	鎖緊		
輪胎	檢查胎壓、磨損		每月檢查胎紋及胎壁
剎車	原地測試	檢查、更換剎車塊	
車體及前叉清潔	洗車/擦拭	打蠟	
座椅	滑動及固定功能正常		
車圈	檢查鋼絲張力	檢查車圈是否扁擺/輪圈壁厚/磨耗指示線	
螺絲、螺母			每月重新檢查鎖緊
曲柄		檢查扭力	
車頭碗	檢查培林間隙		每年培林上油
剎車線			每年檢查更換
轉動手把	檢查培林轉動		每年培林上油

存放收藏：不騎的時候，應該將您的愛車放在通風乾燥的地方。

定期保養：新車在騎乘一個月後或滿100公里，請回到原購買經銷商由專業的技術師為您檢查調整愛車。養成定期回店保養的習慣(每六個月)，可確保您的愛車永遠保持在最佳的騎乘狀態。

產品保固聲明

保固條款僅限於向太平洋自行車授權的經銷商/代理商購買的全新自行車。並且所有保固索賠僅在原購買地區內有效。為保障您的權益，提醒您在購車時要求經銷商/代理商為您註冊車輛並提供購買證明，而此原購買經銷商/代理商也將在保固期間內為您提供免費保固維修。

自交車日起，在正常使用的條件下，我們對車主提供車架2年保固。保固期間內，經認定為製造、材料或設計上的問題，太平洋自行車將提供免費修復或部品更換，但運費需由車主負擔。

通用性零組件保固期為一年，但僅限於前叉、座墊、座桿、變速把手、前後變速器、大齒盤組、曲柄、主軸、前後花鼓、飛輪、車手、車手立管、前後剎車夾器、剎車把手、踏板、前後土除組、前後貨架組、軸承、連桿及連桿連結螺絲等。

消耗性零件，包括外胎、內胎、車圈、鋼絲、襯帶、鍊條、煞車塊、碟盤、碟煞來令片、剎車內外線、變速內外線、握把套、油品、烤漆，及其他非屬於前述車架或一般零件範圍者，無論是否人為因素造成，均不提供免費保固，須收取零件費用及工資。

所有保固期間內更換下來的零件，都將視同太平洋自行車之財產。

擁有完整維護紀錄之車輛，車主可在二年保固到期前於太平洋自行車網路商城購買額外二年的延長保固。

保固期限內於太平洋自行車VIP系統中進行車輛移轉，原車主需在移轉前三個月內至授權通路進行車輛健檢，無異常項目，剩餘的保固期限即可同步移轉給後續所有者。

產品超過保固期間，或因下列原因發生故障，即不適用保固服務範圍。遇此情形，太平洋所有授權通路仍將樂於提供維修服務，但需另收零件費用及工資。

除外條款

跨區或非經太平洋自行車(股)公司授權之販售通路取得產品者。

改裝、加裝未經原廠認證之零配件。

與車輛性能無關之個人感受或現象。

消耗品、耗損性零件及定期保養更換之零件。

未經原廠認可自行重新烤漆者。

競賽、租賃、事故、疏忽、濫用或不當存放與托運。

因天災、地震及其他不可抗力之災害造成之損傷。

**太平洋自行車股份有限公司保留此產品內容變更之權利。

保固卡

購買日期：

西元 年 月 日

車型：

顏色：

產品編號(車架編號)：

車主姓名：

先生 小姐

電話：

職業：

聯絡地址：

生日：

西元 年 月 日

電子郵件信箱：

教育程度：

研究所(含)以上 大學(專) 高中(職)
 高中(職)以下

經銷商蓋章：

註：購車時如完成CRM系統註冊，可取代紙本記錄

HANDY Foldable Instruction/Manual

Introduction

Pacific Cycles would like to thank you for purchasing our high-end cycling product and would like to welcome you to be part of our extended family.

This user manual will provide you the specific details of how to safely enjoy your cycling product and outline the maintenance required.

Pacific Cycles consistently strives for improvement of our cycling products, therefore updates and improvements may be made at anytime. Due to this, Pacific Cycles owns any rights for essential alteration or changes to the product that may require supplemental information. All ongoing updated information and documentation is available on the Pacific Cycles official website.

For installation of Pacific Cycles exclusive accessories, please refer to our official website.

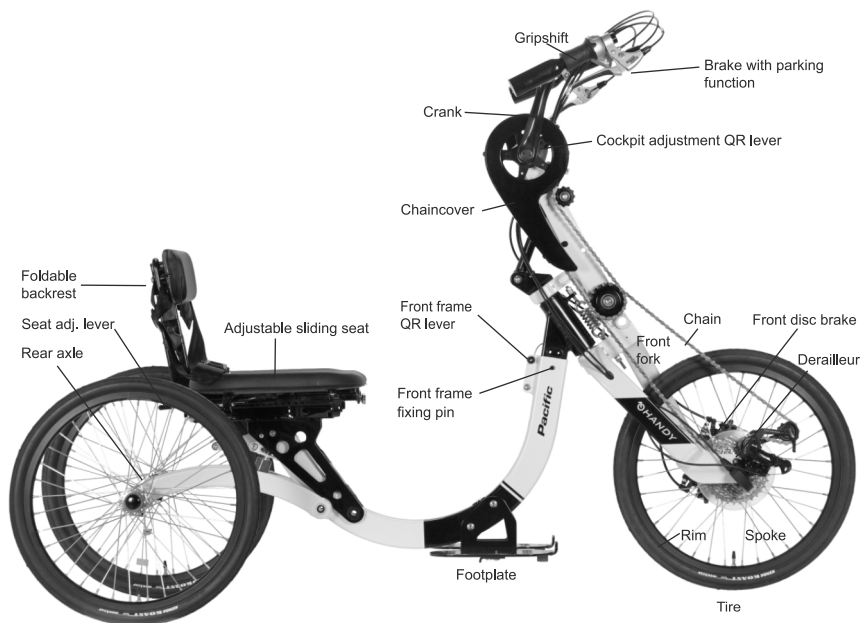
Pacific Cycles Official Webpage : www.pacific-cycles.com

Pacific Cycles VIP Platform : vip.pacific-cycles.com

Pacific Cycles E-Commerce Platform : store.pacific-cycles.com

Enclosed in this user manual is a maintenance schedule. To guarantee your warranty please follow and complete this schedule with an authorized retailer.

Bicycle Glossary



The image above is only for reference. Please refer to the Pacific Cycles official website www.pacific-cycles.com to find the details specific to your model.

Riding Position Adjustment

For optimal riding comfort and safety, a well-fitting cockpit position is important. The HANDY's seat is designed to move forward and backward, allowing adjustment through a handle on the fixed sliding track. The height of the front steering mechanism is also adjustable. The seat position and the height of the handlebars can be tailored to provide riders with the most comfortable cockpit space. Buckle up seatbelt to ensure the rider is secure in the seat.

Safety Precautions

Before Riding

1. Be sure all adjustable parts are tightened (including cockpit adjustment QR lever, rear axle, steering mechanism, etc.)
2. Check if the frame and other components are deformed or damaged.
3. Adjust the height and reach of the steerer. Check if the steerer can rotate from side to side smoothly.
4. Check the brakes and levers are working before riding.
5. Adjust the seat to the suitable position. Make sure the seat is fixed on the sliding track.
6. Check the tire pressure & tires for wear or damage. Rotate the wheels to check the wheel alignment. Check the spokes are in appropriate tension (not loose). The recommended tire pressure is 50 to 60psi.
7. Dress in appropriate cycling clothing - such as bright colors for visibility that won't get caught in any moving parts.
8. Be thoroughly familiar with your bike and its operation/function.

During Riding

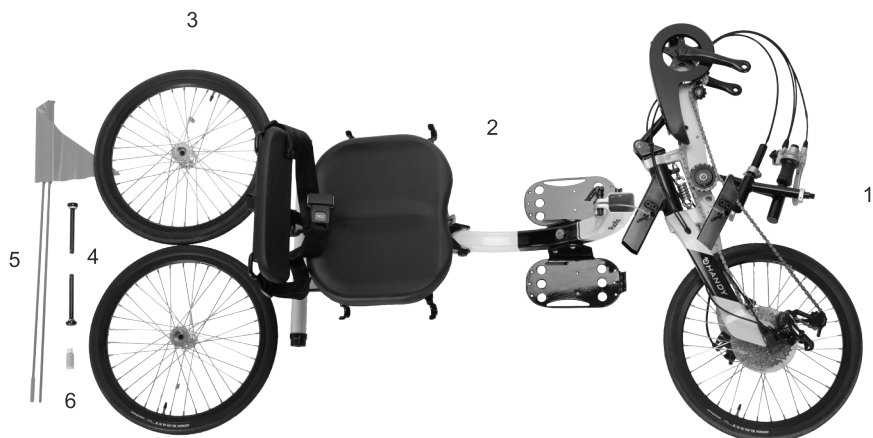
1. Follow the traffic regulations to avoid danger and traffic penalties.
2. Buckle up before start riding.
3. Install lighting and reflectors for riding at night.
4. Apply even and controlled braking when stopping. Avoid applying sudden braking force.
5. Be aware of parked cars opening their side door in front of you.
6. Be aware of pedestrians while riding over crossroads.
7. Be aware of potholes, gutter covers, uneven pavement and obstacles.
8. If any damage or an abnormal situation occurs, please stop riding and check the vehicle .
9. Wear a safety helmet with certified safety standards.
10. Do not attach luggage or pets in baskets to the handlebar as it may cause unintentional loss of control of the bicycle.

After Riding

1. Please follow the instruction manual to implement the basic maintenance and inspection, in order to ensure the cycling's security and efficiency.
2. If any abnormal sound, loose fitting parts or damage occurs, please immediately return to the authorized retailer in your area for repairment / maintenance.
3. Please do not retrofit non factory parts as it may void your warranty.

***It is Bike user's responsibility to comply with the above safety precautions.**

Unbox



Open the carton box and take the frame and parts out

1. Front assembly(transmission, steerer, front wheel)
2. Main chassis(including footplate and seat assembly)
3. Rear wheel set
4. Rear wheel axle
5. Bike safety flag
6. Touch up paint bottle



It is always recommended to have a qualified bicycle mechanic perform repairs and assembly of this cycle.

Please read these instructions thoroughly prior to assembly and riding.

Step 1. Insert the axle into the left and right rear wheels, press the button on top of the axle to securely connect the rear wheels with the frame.



Step 2. Loosen the quick release lever on the main frame's front tube slightly, then attach the front assembly to the main frame tube. Push the safety pin through the main frame tube to end, and then tighten it with the quick release lever.



Step 3. Securely tighten both the left and right handles to the hand crank.



Step 4. Loosen the cockpit adjustment QR and adjust it to the desired cockpit size, then close the lever once the adjustment is made.



Step 5. Folding the seat: Loosen the backrest fixing knob, pull the backrest support upward and tilt it forward. Pull the seat adjustable lever outward and move the seat to the frontmost position, then release the bottom clip beneath the seat to tilt the seat forward. Ensuring that the metal button front of the seat securely attaches to the magnet on the main frame.



Step 6. Compact the storage: Detach the rear fork from the rear of the main frame, slightly lift the bike upward to allow the wheels to move forward, and when the wheels slide beneath the seat, lower the bike to complete the folding process.



Step 7. Finally, check that all quick releases and screws are securely tightened. Grip the brake lever and confirm that the parking button on the brake can be pressed down and engaged.



Routine Maintenance Sheet

Check item	Before every ride	Every 6 months	Others
All the quick release	Check & re-tighten if necessary		
Tire	Check tire pressure		Check thread & sidewall monthly
Brake	Check lever travel and position on rim	Check the pad thickness	
Chain	Clean		
Frame and fork cleanup	Wash / Wipe	Wax	
Seat	The seat can glide effortlessly and securely engage into position		
Wheels	Check spoke tensions	Check rim centered / sidewall thickness / wear indicator	
Nut & bolts			Check, re-tighten monthly
Crankset		Check the BB torque	
Headset	Check bearing play		Re-grease annually
Brake & shift cables			Disassemble, re-grease or replace annually
Hand crank	Check bearing play		Re-grease annually

Storage: When not riding, please leave your cycles in dry and well-ventilated place.

Routine Maintenance: Please return to an official or authorized retailer for all servicing. First service – 1 month or 100km – whichever comes first.

Routine maintenance (every 6 months) ensures your bike is kept in good and safe riding condition.

Warranty Policy

Pacific Cycles warranty is provided for all new Pacific bikes purchased directly from Pacific store or from an officially authorized retailer, all warranty claims are only valid within the region of purchase. In order to protect your own rights, we highly recommend you ask the retailer to registration the bike on your behalf and provide proof of purchase. The authorized retailer is obliged to provide servicing & maintenance to your bicycle during warranty.

Pacific Cycles warranty is valid from the purchase date for a period of 2 years when is serviced, maintained and used within normal riding situations. If any defect develops (including manufacturing, material and design), Pacific shall be responsible for repairment and replacement, however freight or logistics expense is not covered under warranty and is your responsibility.

The warranty of interchangeable components is one year, but limited to front fork, saddle, grip shifter, derailleur, chainwheel, crank set, bottom bracket, hubs, freewheels, handlebar, handlebar stem, brakes, pedals, fenders, carriers, bearings, connecting rods, connecting screws.

The consumable components including outer tires, inner tires, rims, wires, liner bands, brakes, brake discs, linings, brake cables, shifter cables, grips, greasers, coating, and other unrelated brackets and normal components are not eligible for warranty.

The components replaced during warranty shall be deemed as the property of Pacific Cycles.

With the complete maintenance record, the owner can purchase additional two-year warranty extension on Pacific Cycles E-Commerce Platform (vip.pacific-cycles.com) before the existing warranty has expired.

During the warranty, the bike owner can transfer the bike on the VIP system, and the warranty service will be transferred to the third party.

The warranty is not eligible for owners due to expiration or malfunction caused by below reasons. Nevertheless, the official retailers are still in favor to provide service and repair, but should charge you the material & labor fee.

The following conditions are not covered by warranty:

Product from non-local (other region) distributor/retailer and unauthorized sources.

Maintenance not performed by the official retailer. Retrofitting or replacement of non-original components or accessories.

Personal factors not related the bike performance.

Consumable components.

Unauthorized re-painted frame.

Abuse such as racing, renting, accident, ignorance or unsuitable storage or shipping.

Force majeure including typhoons, earthquakes, fires, floods, wars causes the damage.

**Pacific reserves the rights to change or modify the terms.

Warranty Certificate

Date of purchase

MM/

DD/

YYYY

Model

Color

Serial number

Owner name

Mr.

Ms./Miss

Phone number

Occupation

Address

Date of birth

MM/

DD/

YYYY

E-mail

Education level

Master and above

College

Senior high school

other

Dealer stamp

Note: The completion of the CRM registration has same authenticity of this page.

