

## COLOR

- We print in four color process.
- We cannot print SPOT colors.
- RGB is preferred.
- CMYK files are acceptable.

*\*\*Colors will be converted to RGB color space for final printing. This is the best color calibration for our machines.*

### SAMPLE COLOR COMPARISON

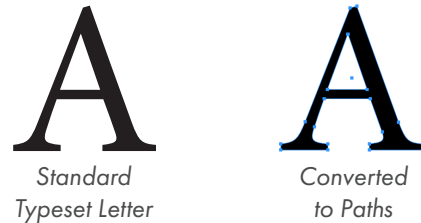


**UNSURE ABOUT YOUR COLORS?** Please refer to our swatch guide for the closest possible match to your desired color.

## TEXT

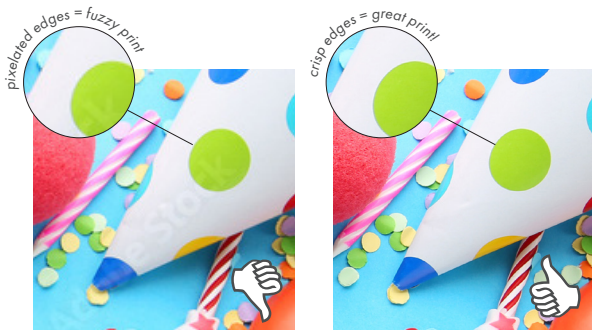
- All text should be converted to paths (a.k.a. curves or outlines).
- If revisions by our design department are required\*, we will need the collected font set for each typeface used in your design.

*\*Design fees apply.*



## IMAGES

- **Raster Art** (photos & some graphics), are made up of pixels, which lose image quality when re-sized.



Web site image:  
3.33"x2.23 at 300 dpi  
Re-sized to: 8.27"x5.5"

Hi-resolution image:  
18.24"x12.16 at 300 dpi  
Re-sized to: 8.27"x5.5"

Acceptable File Specs: JPG or PDF  
**AT LEAST 8"x10" at 300 dpi.**

- **Vector Art** is made up of points, lines, curves, & shapes that are based on mathematical formulas. These graphics are fully scalable without losing image quality.



Acceptable File Specs: AI, EPS or PDF  
**any size.**

## A message about CANVA FILES

While Canva is a nice tool for visualization or reference, the files produced are not always fit for hi-resolution, professional printing. If you would like to proceed with using a Canva file for final production, you accept that resulting artwork quality, colors, textures, imagery, and sizes viewed on screen may differ in print. These productions are final sale, no refunds.

**Our in-house design department can recreate your file or create a new design, to ensure the highest quality, professional artwork for production. Request a quote today!**