

# Diamond Cut

(Large Pack)

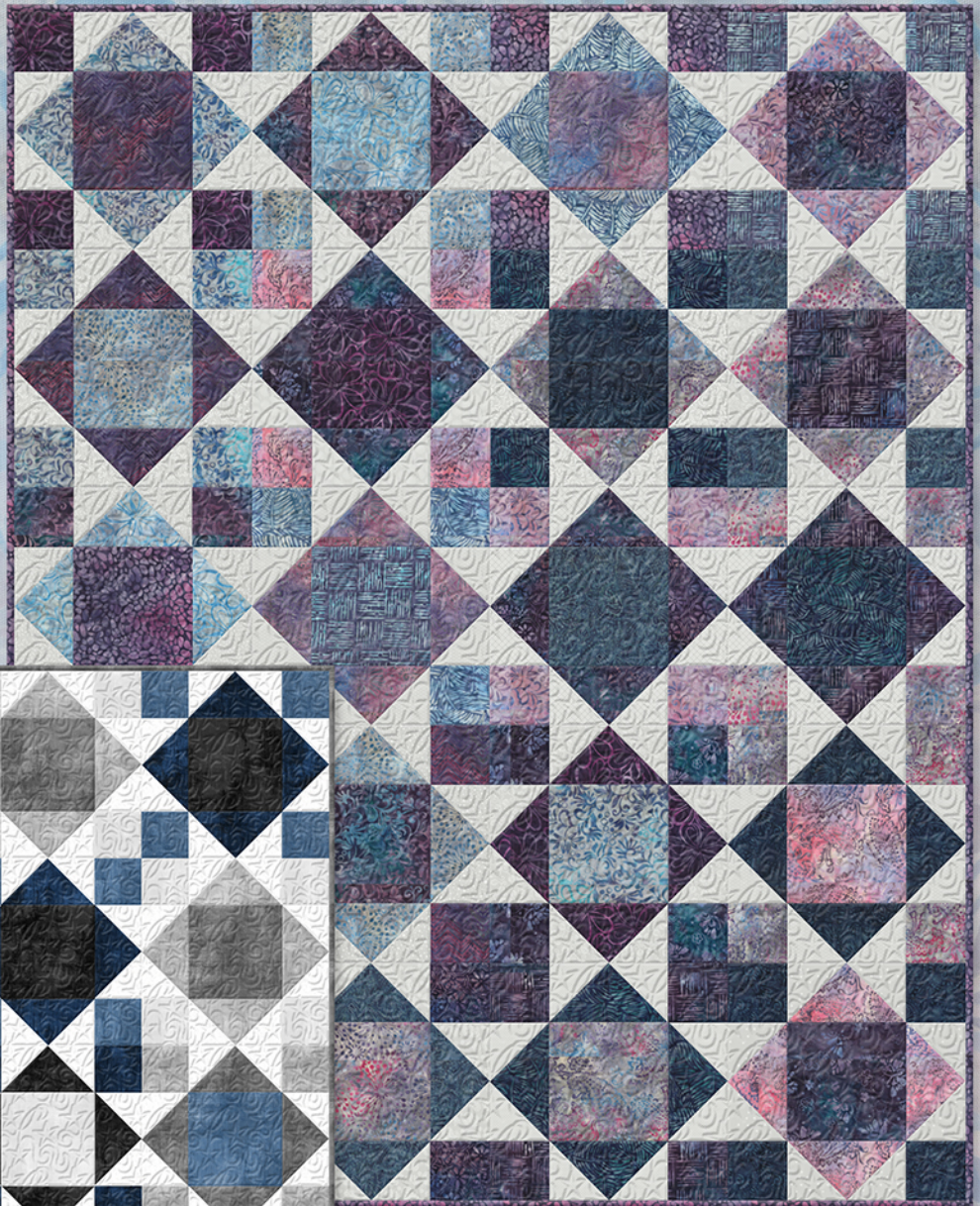
Featuring 10 Karat &  
5 Karat Gems or Jewels Packs



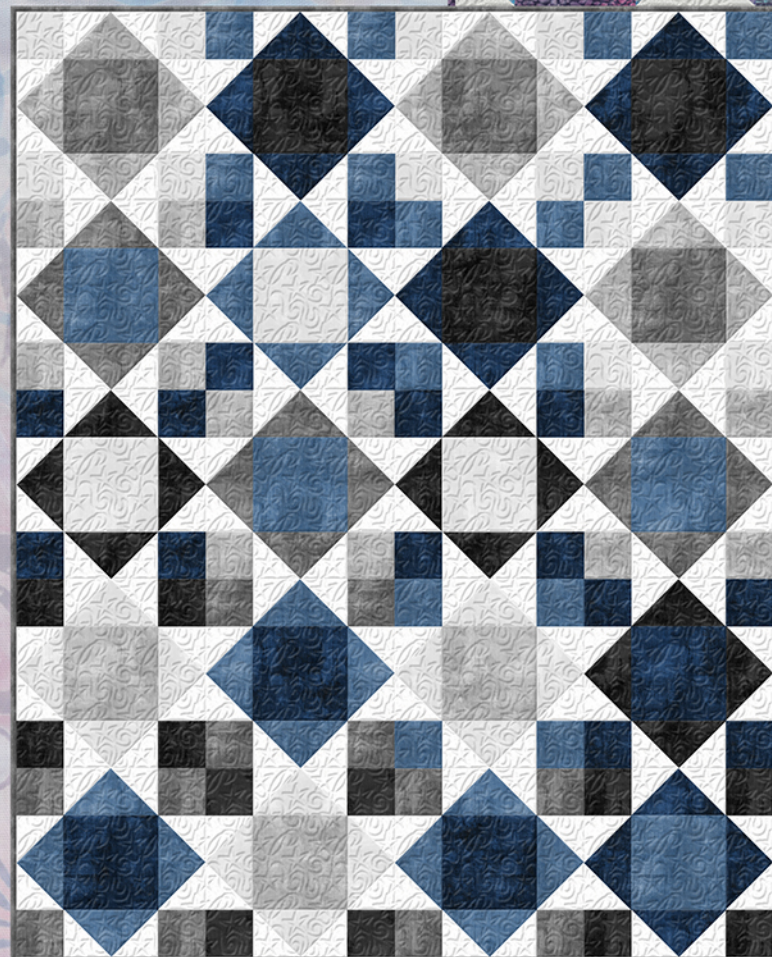
Large Throw Quilt:  
64" x 80"

Requires:

- A 1 - 10 Karat Pack
- B 2 - 5 Karat Packs
- C 2 - 5 Karat Packs
- D Binding: 2/3 yd.
- E Backing:  
44/45" - 5 yds.  
108" - 2 1/8 yds.



- A 1 - 511-70-511 Wind Chill
- B 2 - 506-70-506 Wind Chill
- C 2 - 507-25-507 Silver Linings



- A 1 - 512-43-512 Dry Brush (Cold Snap)
- B 2 - 507-43-507 Dry Brush (Cold Snap)
- C 2 - 507-12-507 White Out



Wilmington Prints: A World of Possibilities

[www.wilmingtonprints.com](http://www.wilmingtonprints.com)




# Diamond Cut

Please read all instructions carefully AND identify all fabrics before beginning.


All instructions include a 1/4" seam allowance and strips are cut selvage to selvage, unless stated otherwise.

## 1. Cut the following:

**Fabric A** - Trim (20) 10" squares to 9-1/4" squares then cut in half diagonally twice  for 80 triangles

Trim (20) 10" squares to 8-1/2" squares

**Fabric B** - Trim (80) 5" squares make 20 sets of 4 matching 4-1/2" squares

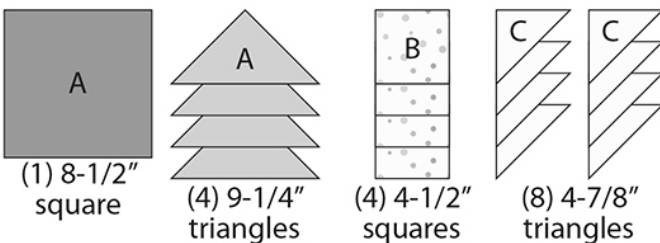
**Fabric C** - Trim (80) 5" squares to 4-7/8" squares then cut in half diagonally for 160 triangles 

**Fabric D** - Cut (8) 2-1/2" strips (binding)

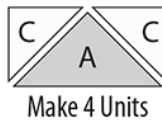
*Note: Prints in packs may vary from color quilt image.*

## 2. Piecing Order:

1. For each block select 1 **Fabric A** 8-1/2" square, 4 same print **Fabric A** 9-1/4" triangles (a different print than the **Fabric A** 8-1/2" square), 4 same print **Fabric B** 4-1/2" squares, and (8) same print **Fabric C** 4-7/8" triangles.

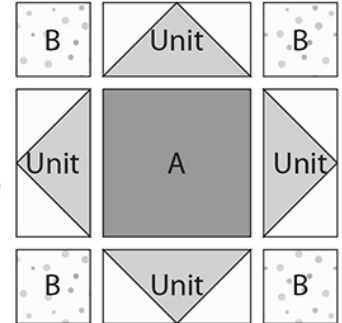


2. Sew 2 **Fabric C** 4-7/8" triangles to short edges of a 9-1/4" **Fabric A** triangle. Make a total of 4 Unit 1 (4-1/2" x 8-1/2" unfinished).



*Shading of diagrams may vary depending on fabrics used.*

3. Arrange **Fabric A** 8-1/2" square, 4 units, and 4 **Fabric B** 4-1/2" squares in 3 rows as shown. Stitch into rows. Sew rows together to complete a block (16-1/2" square unfinished).



Make 20 Blocks

4. Repeat Steps 1-3 to make a total of 20 blocks.

5. Refer to Quilt Layout (Page 2) for arrangement and placement of blocks.

6. Arrange blocks in 5 rows. Stitch into rows. Sew rows together.

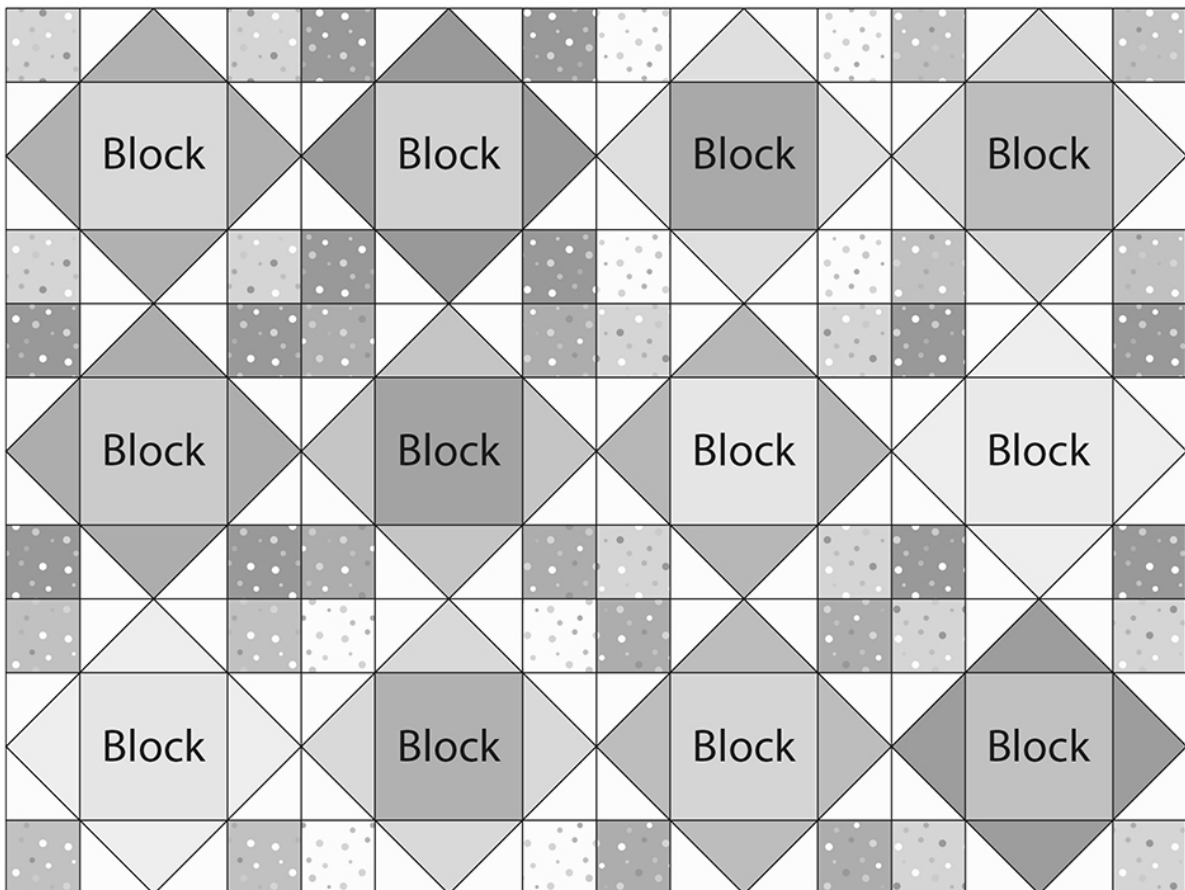
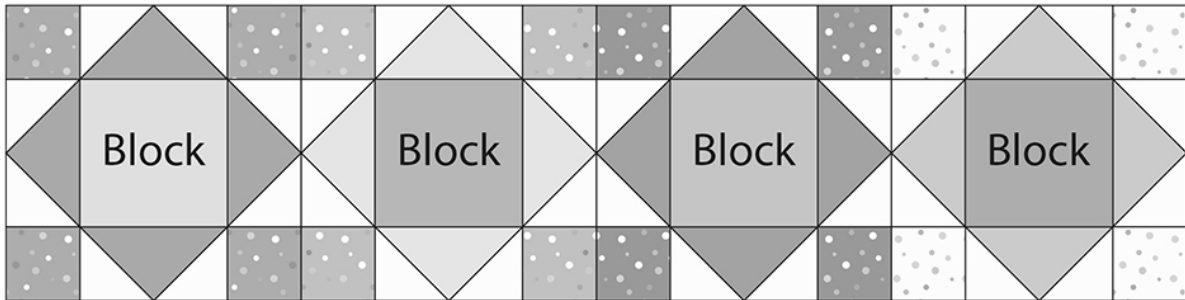
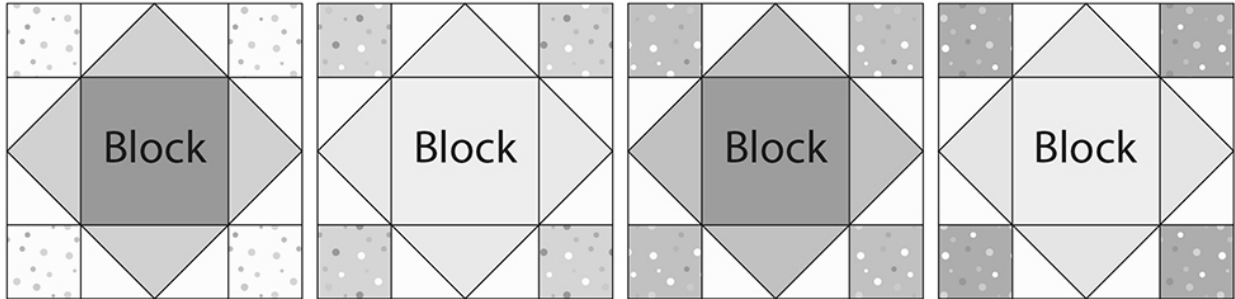
7. The quilt measures approximately 64-1/2" x 80-1/2" (unfinished). Make backing (**Fabric E**) approximately 8" larger than the top.

8. Layer and baste top, batting, and backing together. Quilt as desired. Attach binding (**Fabric D**) and enjoy!!

# Diamond Cut

## QUILT LAYOUT

*Shading of Quilt Layout may vary depending on fabrics used.*





# Diamond Cut

## (Large Pack)

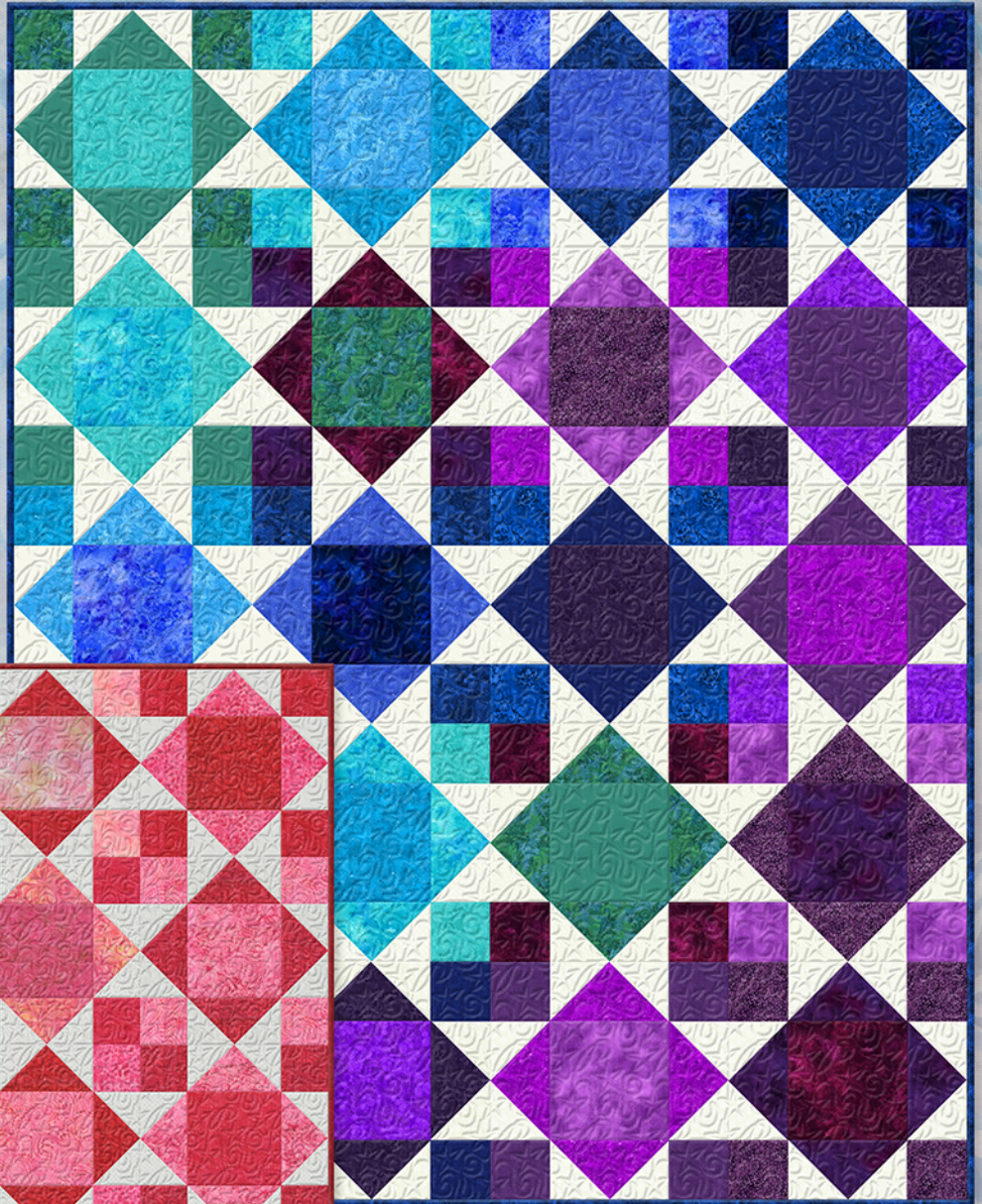
Featuring 10 Karat &  
5 Karat Gems or Jewels Packs



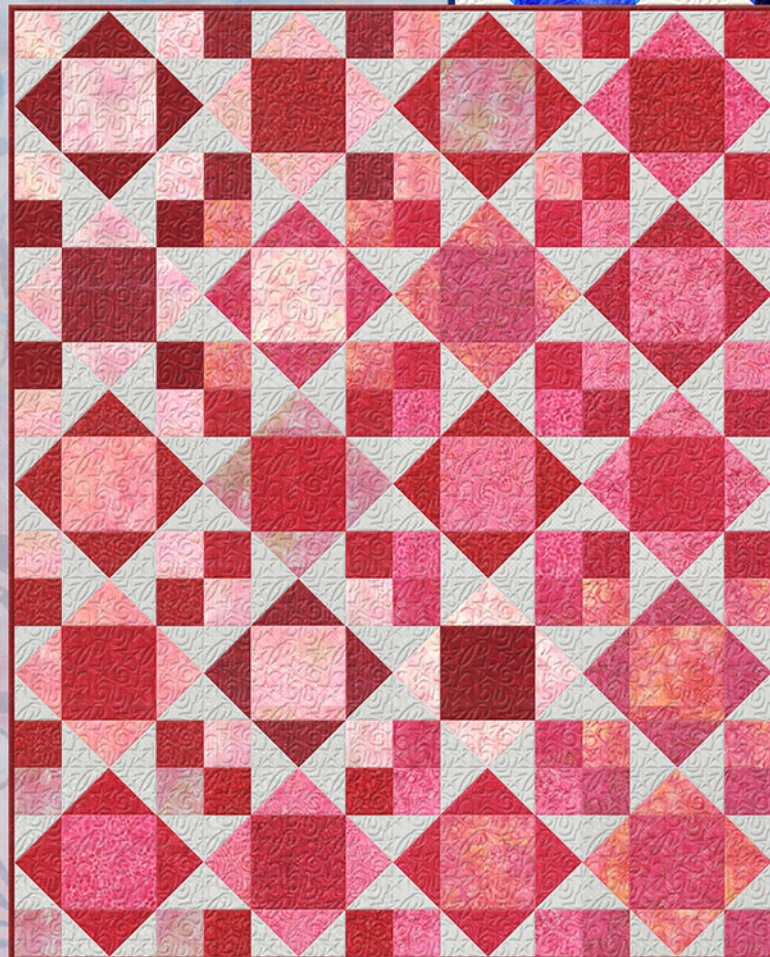
Large Throw Quilt:  
64" x 80"

Requires:

- A 1 - 10 Karat Pack
- B 2 - 5 Karat Packs
- C 2 - 5 Karat Packs
- D Binding: 2/3 yd.
- E Backing:  
44/45" - 5 yds.  
108" - 2 1/8 yds.



- A 1 - 512-28-512 Royal Nights
- B 2 - 507-28-507 Royal Nights
- C 2 - 507-12-507 White Out



- A 1 - 511-66-511 Cherry Sweet
- B 2 - 506-66-506 Cherry Sweet
- C 2 - 507-25-507 Silver Linings



Wilmington Prints: A World of Possibilities

[www.wilmingtonprints.com](http://www.wilmingtonprints.com)