

Featuring Gems & Jewels Strip Packs

Cobblestone Court

Ocean View/ White Noise

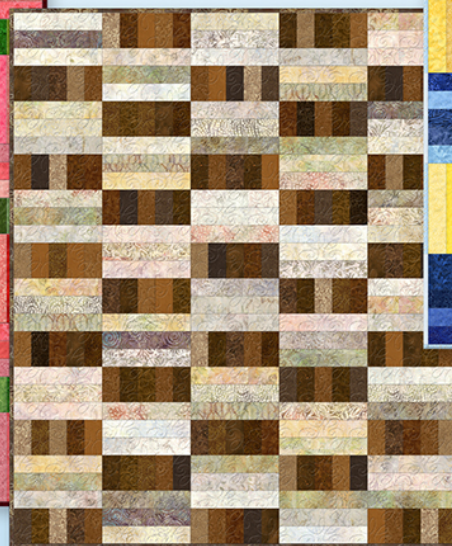
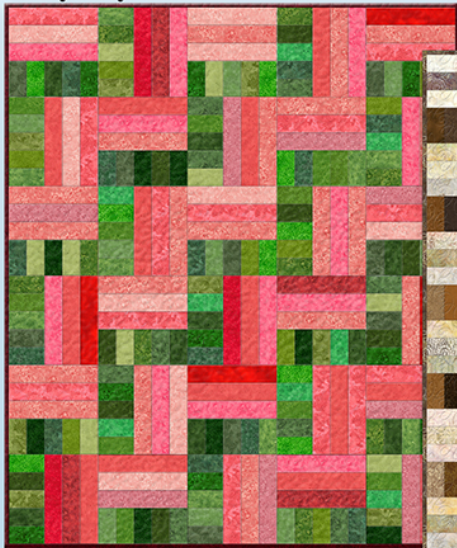


Quilt: 50" x 60"
Requires 2 strip packs
Includes Scrappy Binding
Backing: 3-3/8 yards

Skinny Jeans/Sand Bar



Ruby Days/Emerald Forest



Sand Bar/Coffee Cafe



Sunny Side Up/Sapphire Sky



Wilmington Prints: A World of Possibilities

www.wilmingtonprints.com

Cobblestone Court

Please read all instructions carefully AND identify all fabrics before beginning.
All instructions include a 1/4" seam allowance and strips are cut selvage to selvage.

NOTES: Light and dark strip packs are interchangeable for different looks. Examine the suggested Quilt Layouts. "A" layouts use the light strip pack as **PACK #1** and dark strip pack as **PACK #2**. "B" layouts use the dark strip pack as **PACK #1** and light strip pack as **PACK #2**.
If using 2 mixed value strip packs, divide into piles of 24 lightest and 24 darkest strips.

1. Cut the following:

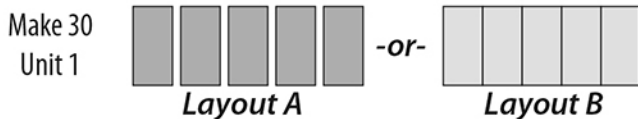
PACK #1 - Cut a total of (90) 2-1/2" x 10-1/2" pieces

PACK #2 - Set aside 6 strips for binding
Cut a total of (150) 2-1/2" x 4-1/2" pieces

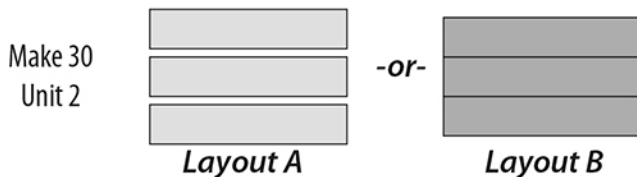
Note: Prints in Essential Gems or Batavian Jewels packs may vary from color quilt image.

2. Piecing Order:

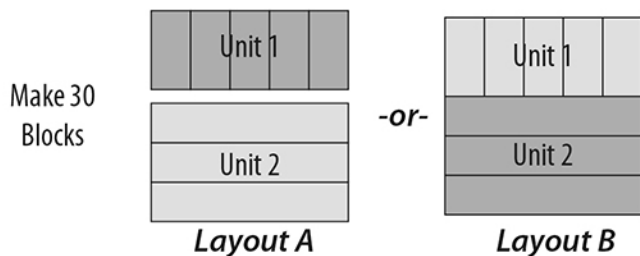
1. Randomly select 5 **PACK #2** 2-1/2" x 4-1/2" pieces. Stitch pieces together in a single row along their long edges. Make a total of 30 Unit 1 (4-1/2" x 10-1/2" unfinished).



2. Randomly select 3 **PACK #1** 2-1/2" x 10-1/2" pieces. Stitch pieces together along their long edges. Make a total of 30 Unit 2 (6-1/2" x 10-1/2" unfinished).



3. Stitch 1 each Units 1 and 2 together as shown. Make a total of 30 blocks (10-1/2" square unfinished).



4. Refer to Quilt Layouts (Pages 1, 2, and 3) for arrangement and placement of blocks.

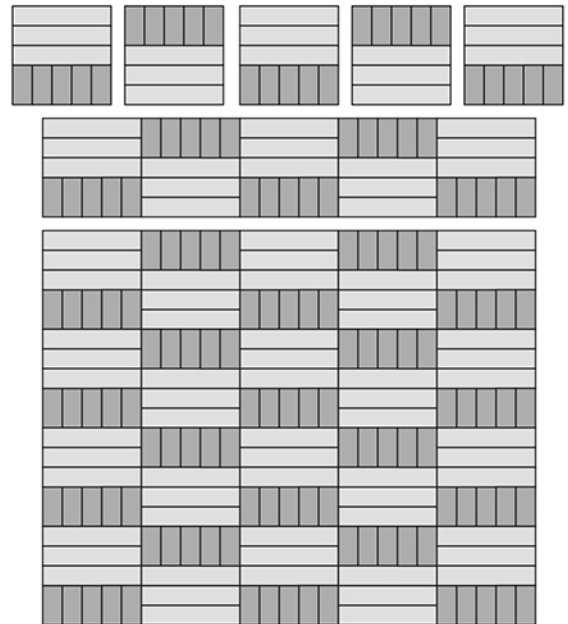
5. Arrange blocks in 6 rows of 5 blocks. Stitch blocks into rows. Sew rows together.

6. The quilt measures approximately 50-1/2" x 60-1/2" (unfinished). Make backing approximately 8" larger than the top.

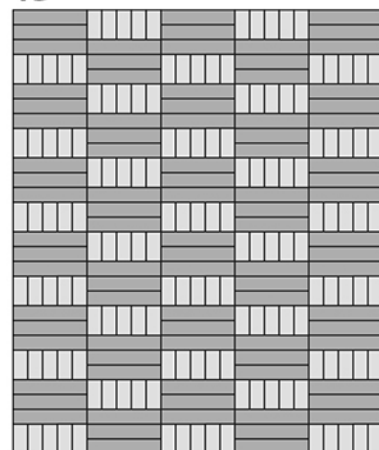
7. Layer and baste top, batting, and backing together. Quilt as desired. Attach binding (**PACK #2** strips) and enjoy!!

QUILT LAYOUTS

1A



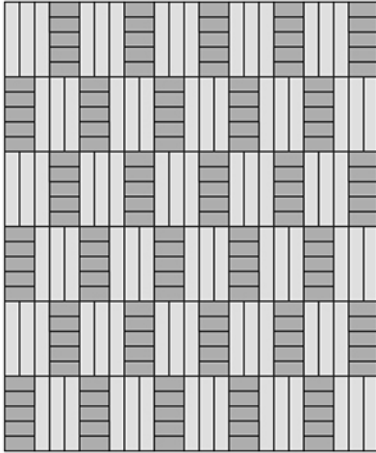
1B



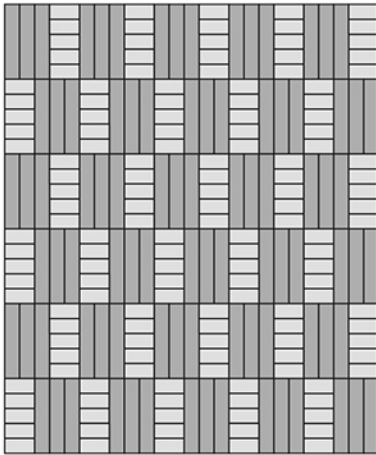
Cobblestone Court

QUILT LAYOUTS

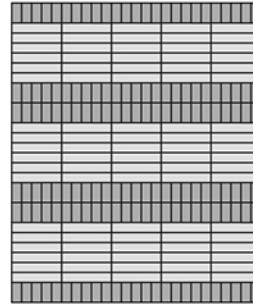
2A



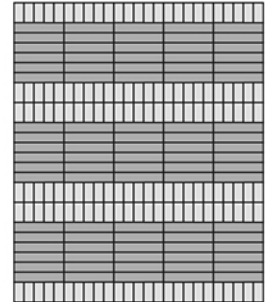
2B



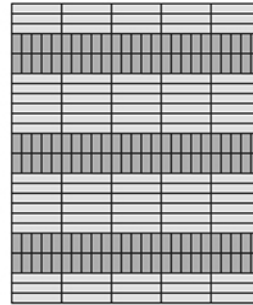
3A



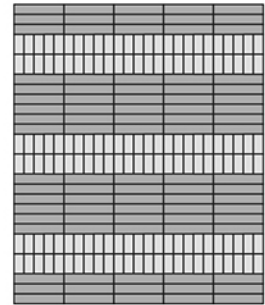
3B



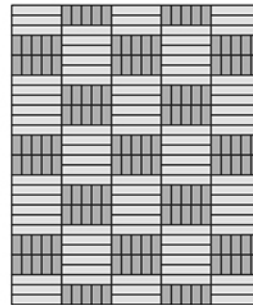
4A



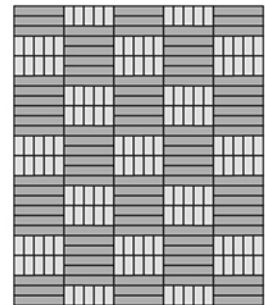
4B



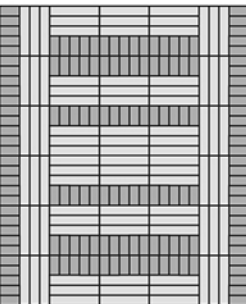
5A



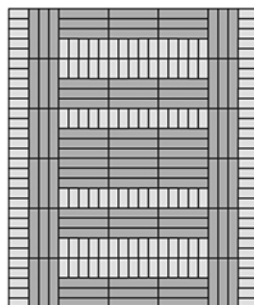
5B



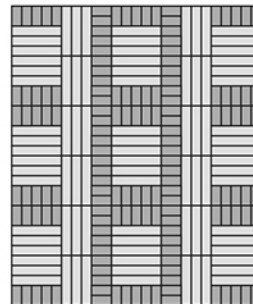
6A



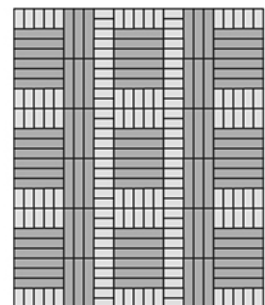
6B



7A



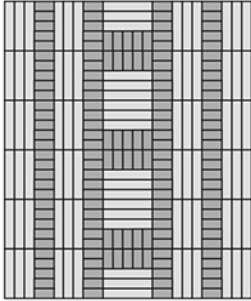
7B



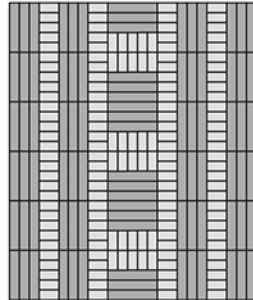
Cobblestone Court

QUILT LAYOUTS

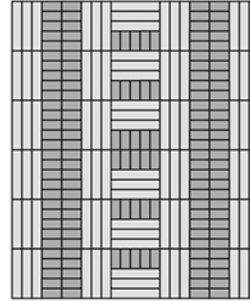
8A



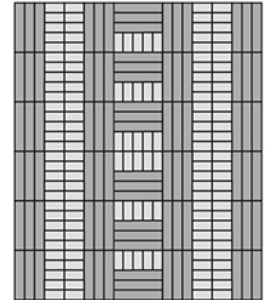
8B



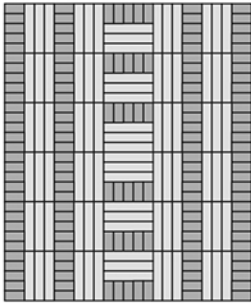
9A



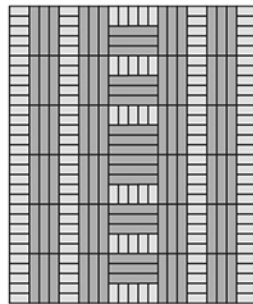
9B



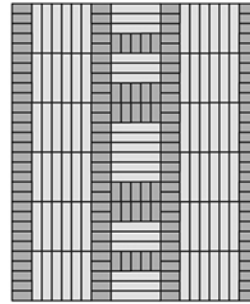
10A



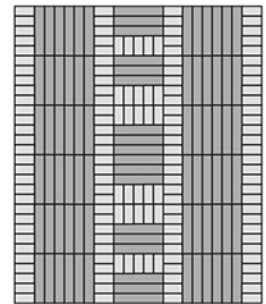
10B



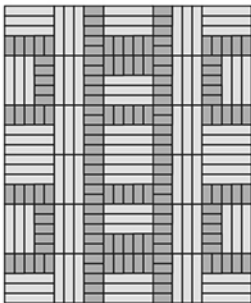
11A



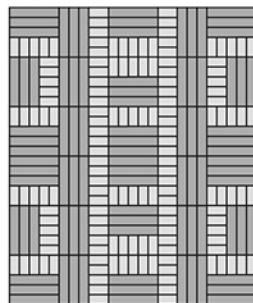
11B



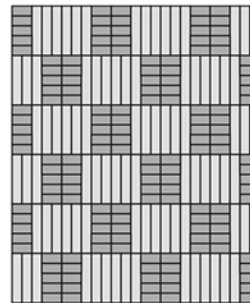
12A



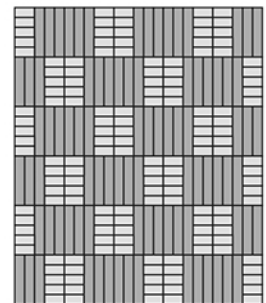
12B



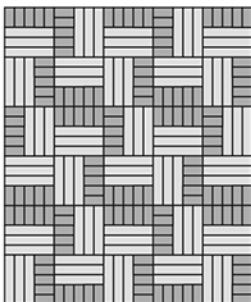
13A



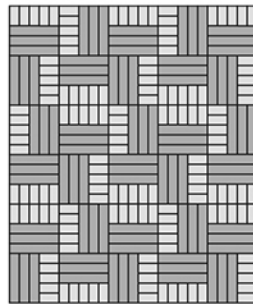
13B



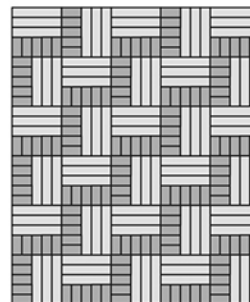
14A



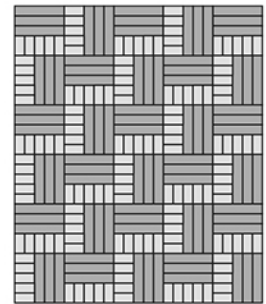
14B



15A

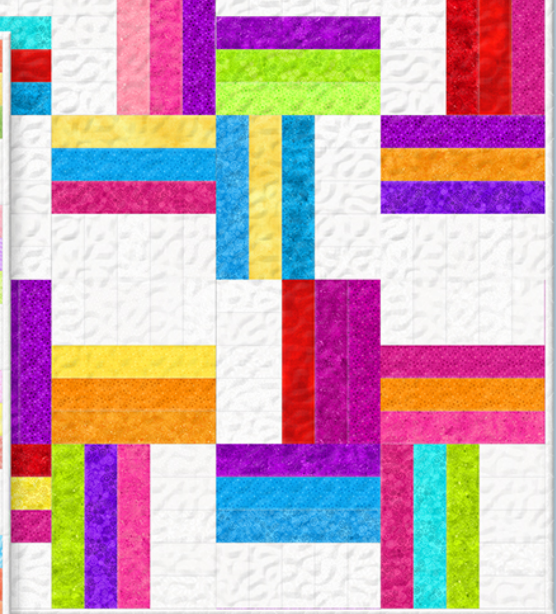
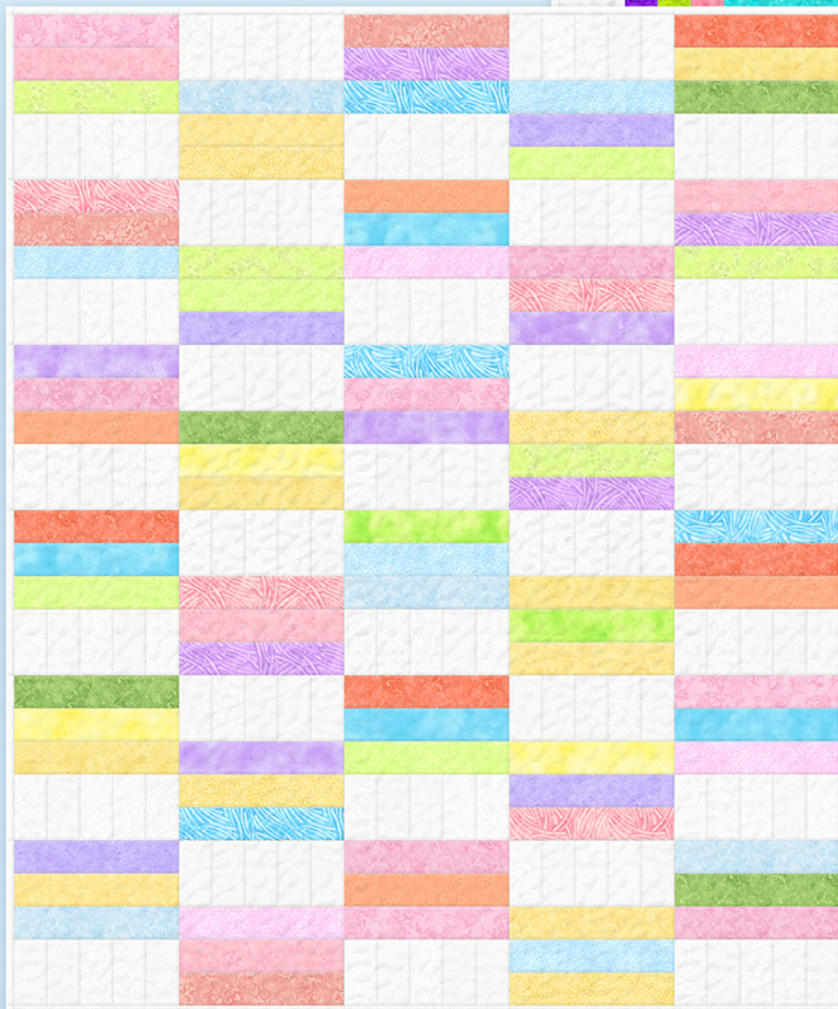
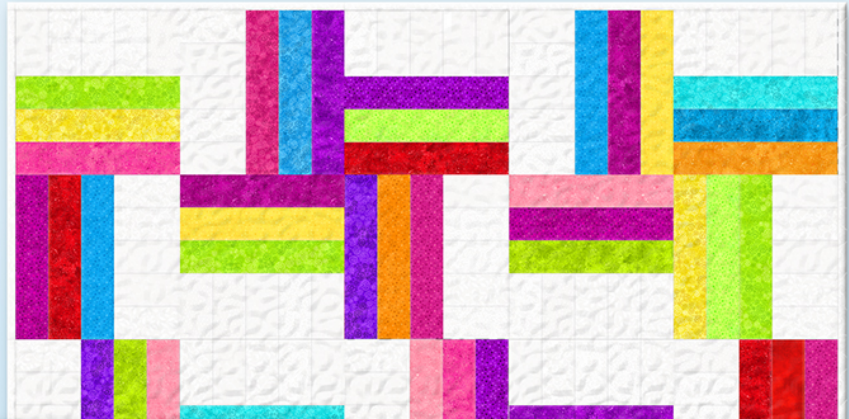


15B



Cobblestone Court

Featuring Gems & Jewels Strip Packs



Magic Colors/White Out

Quilt: 50" x 60"
Requires 2 strip packs
Includes Scrappy Binding
Backing: 3-3/8 yards

15 Layout variations included.

Spring Fling/White Out



www.wilmingtonprints.com



Wilmington Prints: A World of Possibilities