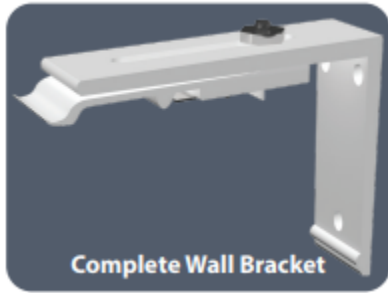


Tools you will need:

1. Pencil
2. Screwdriver
3. Level
4. Measuring Tape
5. Rod and Brackets



OR

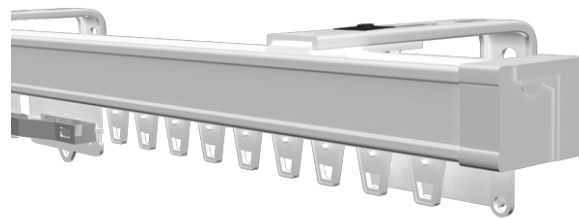
Wall Mount



Ceiling Mount



Your track will come fully assembled with carriers and masters. **Brackets are packaged separately.**



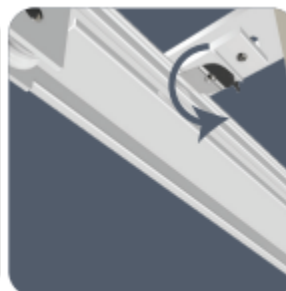
Summary of Installation



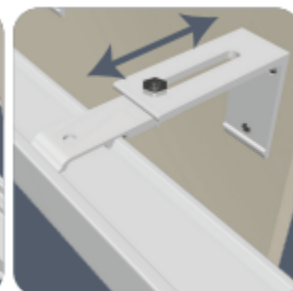
Hang the brackets on the wall (or ceiling).



Lift the rod onto the Cam Assembly Lip (or snap in).



Lock the Cam Assembly into place.



Adjust the Return and tighten screw (or washer)

Installing brackets:

Slightly loosen the bottom assembly with a screw driver.



Measure Carefully And Use A Level: Don't assume your ceiling, your trim, or whatever you use as a base point to measure from is level. Measure, mark and verify with level. Install your brackets and verify again using a level. There isn't much "play" with **Heavy-Duty** or **Decorative Traverse** rods, so you can't fudge-it a little when you hang the track. If your brackets aren't even and level, the track isn't going to snap in. You need to install a bracket or support **every three to four linear feet** of rod. Rods five feet or more may require a center support.

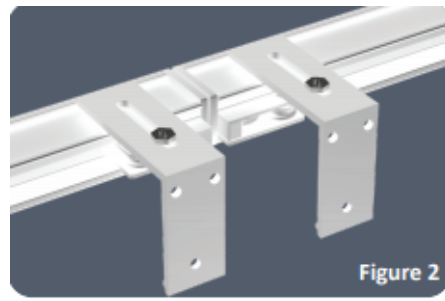
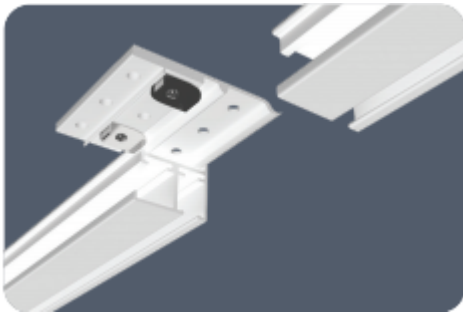


The most difficult part about installing traverse rods is getting the brackets even, level, and straight. A variance of as little as a 1/8" can prevent you from being able to install your rod correctly. Choose your desired location to mount brackets and mark with a pencil. Make sure that all brackets are aligned evenly across and verify using a level. Brackets should be positioned every 3-4 FT. Never, under any circumstances, use hollow anchors with brackets.

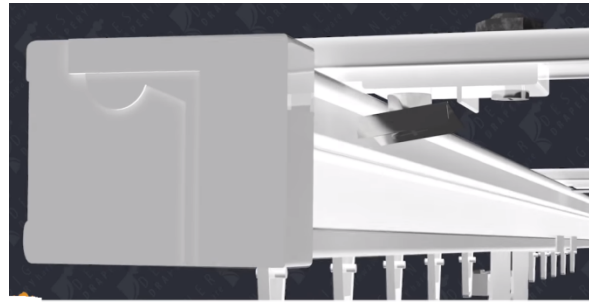
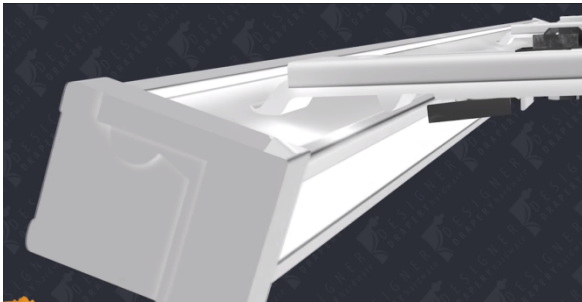
Splices For Multi-Part Rods

Once the brackets are installed, if your rod has been made in sections and includes either an internal or external splice, install the splice before lifting the rod onto the brackets. It's important to remember that splices don't provide strength or stability. Splices simply keep the two rod sections from working apart over time. You should always position a bracket as close as possible to the splice to provide support.

Your spliced rods will come in sections. With the rods on the floor, connect the 2 (or more) sections of the rod. Once rods are connected into one piece you can proceed to mount rods onto brackets that are installed into ceiling/wall. It is important to mount brackets on both sides of splice connector for support and stability.



Position the rod onto the lip of the brackets and push down to snap the rod in.



With the rod snapped into bracket, use a screw driver to tighten the bottom assembly to lock brackets securely onto rod.



Adjust returns on wall brackets if desired.

Attach drapery panel to carriers and you are good to go!