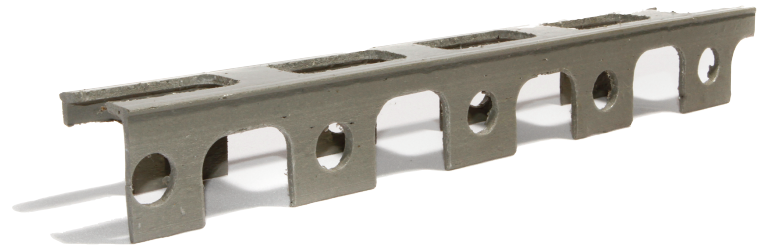


Plastic Chair

For use in the support of bottom reinforcement in suspended slabs. Very stable and has excellent concrete flow characteristics.

Product Code	Cover (mm)	Pack Size (mtr)	Pallet Size (mtr)
PCH15	15	100	7000
PCH20	20	100	6300
PCH25	25	100	4900
PCH30	30	100	4200
PCH35	35	60	3780
PCH40	40	60	2400
PCH45	45	60	2100
PCH50	50	60	1680
PCH60	60	40	1280
PCH70	70	40	960

All sizes are 2 metre lengths.



In order to ascertain the load carrying requirements of our PCH spacers, BS 7973 -1: 2001 Annex A was referred to. A selection of spacers from opposite ends of the cover spectrum were selected and loaded in accordance with Annex A table 2. The required load was applied for a period of 10 minutes as per the standard and the permanent deformation of the spacer was recorded after a one minute recovery period had elapsed. In order to meet the load bearing requirements of the standard the resulting spacer height must be within 1.0mm of the height of the spacer prior to testing.

In accordance with the standard the PCH range was tested to meet the requirements of a normal duty spacer, category N, requiring a test load of 0.5kN (approximately 50kg). The results of our tests are tabulated below:

Sample Ref #	Cover	Test Load (kN)	Permanent Set (mm)	Classification	Result
1	15	0.5	0.05	Normal	Pass
2	15	0.5	0.10	Normal	Pass
3	15	0.5	0.10	Normal	Pass
4	15	0.5	0.05	Normal	Pass
5	15	0.5	0.15	Normal	Pass
1	70	0.5	0.10	Normal	Pass
2	70	0.5	0.10	Normal	Pass
3	70	0.5	0.05	Normal	Pass
4	70	0.5	0.05	Normal	Pass
5	70	0.5	0.05	Normal	Pass

Conclusion

From our results we are satisfied that the PCH in the cover range 15mm to 70mm inclusive satisfies the load bearing requirements of BS 7973-1:2001 Annex A category N.