



Units 1-3 Shannon Industrial Estate
Lodge Road
Sandbach
Cheshire
CW11 3HP

e. info@euroacc.co.uk
w. www.@euroacc.co.uk

Data Sheet

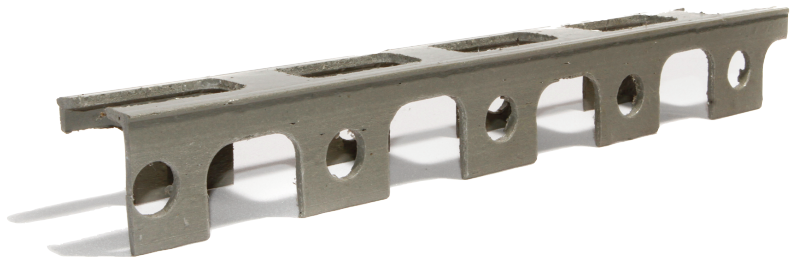
Plastic Chair

For use in the support of bottom reinforcement in suspended slabs.
Very stable and has excellent concrete flow characteristics.

Manufactured in accordance with BS7973-1 :2001.

Plastic Chair

Product Code	Cover (mm)	Pack Size (mtr)	Pallet Size (mtr)
PCH15	15	100	7000
PCH20	20	100	6300
PCH25	25	100	4900
PCH30	30	100	4200
PCH35	35	60	3780
PCH40	40	60	2400
PCH45	45	60	2100
PCH50	50	60	1680
PCH60	60	40	1280
PCH70	70	40	1120



Material:

Copolymer Polypropylene

Stability/Storage:

Long term intensive influence of light (UV Radiation) can damage products of polypropylene. During storage, the items should be protected against sun exposure and bright daylight.