

01

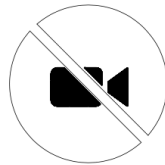
BEFORE YOU START

DEDICATE TIME



Schedule a dedicated time of approximately 1 hour to prepare your HODLR.

STAY PRIVATE



Ensure that no humans and cameras have visual line-of-sight to your workspace.

Use the cam covers included in this package on your computer/phone camera.

Do not read your seed words out loud.

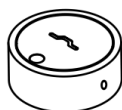
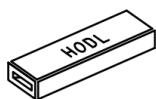
LEAVE NO TRACE



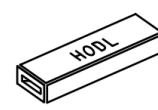
Make sure you have a lighter or matches at hand to destroy your recovery scheme sheet at the end of this protocol.



For security reasons, this protocol focuses on hardware wallets. However, it is fully compatible with software wallets.

GENERATEFROM YOUR
HARDWARE WALLETTO YOUR
HODLRPROCEED TO PAGE **03****UPGRADE**FROM YOUR
PAPER BACKUP

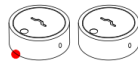
1. seed
2. safe
3. life
4. love
5. legend
6. idea

TO YOUR
HODLRPROCEED TO PAGE **03****RECOVER**FROM YOUR
HODLRTO YOUR
HARDWARE WALLETPROCEED TO PAGE **R**

SOLO 1-OF-1

Backup your seed
on 1 HODLR.

Use the **SOLO 1-OF-1**
Recovery Scheme Sheet.

TWINS 1-OF-2

Duplicate your seed
on 2 HODLRs.

Use the **TWINS 1-OF-2**
Recovery Scheme Sheet.

SPLIT 2-OF-3

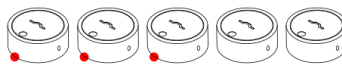
Split your seed
into 3 HODLRs.

Use the **SPLIT 2-of-3**
Recovery Scheme Sheet.

SHAMIR 2-OF-3

Split your seed
into 3 HODLRs with
Shamir's Secret Sharing.*

Use the **SHAMIR 2-of-3**
Recovery Scheme Sheet.

SHAMIR 3-OF-5

Split your seed
into 5 HODLRs with
Shamir's Secret Sharing.*

Use the **SHAMIR 3-of-5**
Recovery Scheme Sheet.

MORE SCHEMES

To set up more complex
Recovery Schemes, please
download pdf sheets from
hodlr.swiss/downloads

** To use the Shamir Secret
Sharing Scheme you need a
compatible hardware wallet.*

04

WRITE DOWN YOUR SEED

USE YOUR RECOVERY SCHEME SHEET

● Write down each word of your seed following the numbers on the Recovery Scheme Sheet.

Example of a word in the BIP39 wordlist:

01 R A N D O M

- Your seed words are pulled from a BIP39 / SLIP39 specific list of 2048 / 1024 words.
- These wordlists are created in such a way that the first four letters are enough to unambiguously identify the word.
- These lists never change over time. It will always be safe to recover your hardware wallet this way.

SPLIT 2-OF-3 *
RECOVERY SCHEME SHEET
COMPATIBLE FOR 24 WORDS BIP39 SEED
* 3 HODLRS ARE NEEDED FOR THIS RECOVERY SCHEME

HODLR 1	HODLR 2	HODLR 3
SHARE (01)	SHARE (02)	SHARE (03)
OF (03)	OF (03)	OF (03)
THRESHOLD (02)	THRESHOLD (02)	THRESHOLD (02)

01	01	01
02	02	02
03	03	03
04	04	04
05	05	05
06	06	06
07	07	07
08	08	08
09	09	09
10	10	10
11	11	11
12	12	12
13	13	13
14	14	14
15	15	15
16	16	16
17	17	17
18	18	18
19	19	19
20	20	20
21	21	21
22	22	22
23	23	23
24	24	24

BURN THIS PAPER AFTER USE. DON'T THROW IT IN THE GARBAGE. THIS IS THE WAY.

05

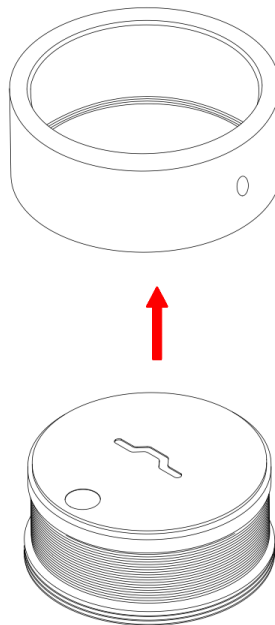
OPEN YOUR HODLR

1. UNSCREW



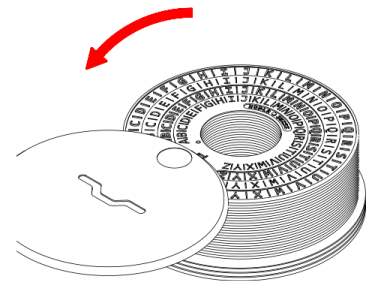
Apply pressure between your thumb and index to unscrew the ring.

2. DETACH



Detach and lift the ring upwards.

3. SPIN



Spin the disks.

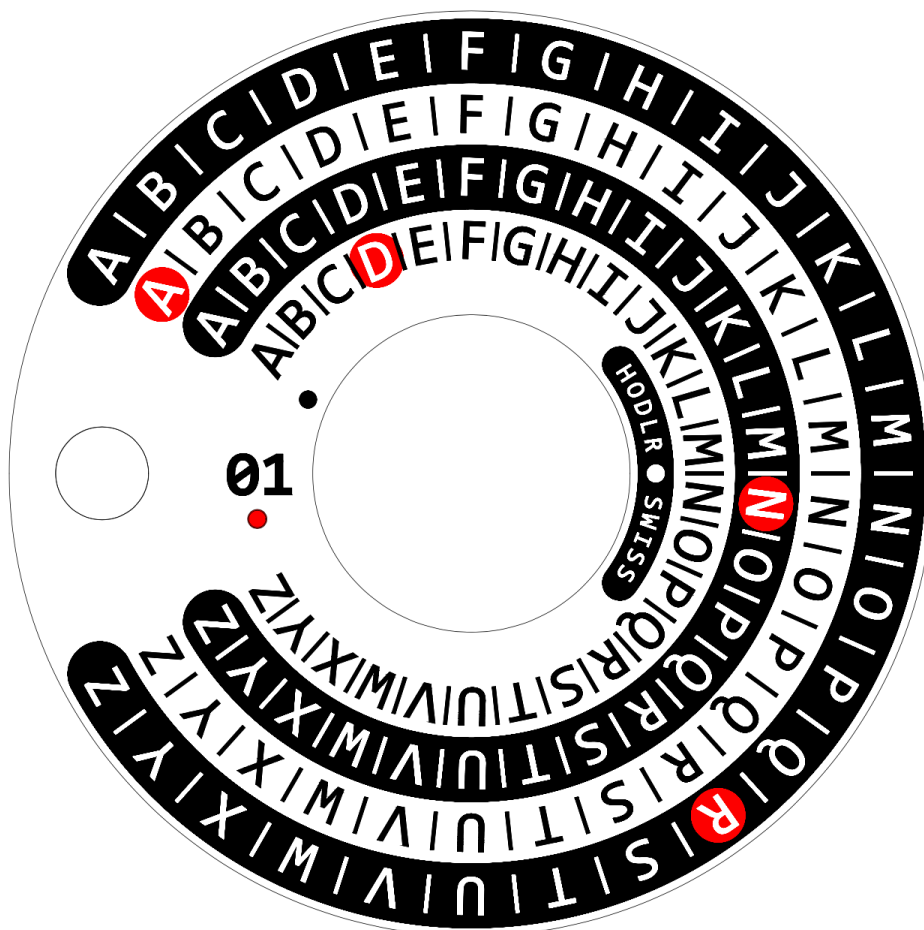


If you find your Hodlr hard to open, apply pressure on the rivet and unscrew the ring with your other hand.

06

PRE-MARK YOUR SEED

USE THE PERMANENT MARKER



1 DISK = 1 WORD = 4 LETTERS

Disk number = Seed word number

Always refer to your Recovery Scheme Sheet.

**1st letter
1st row on the disk**

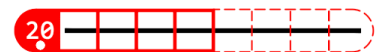
**2nd letter
2nd row on the disk**



**3rd letter
3rd row on the disk**

**4th letter
4th row on the disk**

EMPTY DISK



Mark the dot below the disk number so you know this disk is not being used. Always refer to your Recovery Scheme Sheet.

THREE LETTERS WORDS



Some seed words are only 3 letters long. In this case, the 4th row on the disk remains unmarked.

MISTAKES

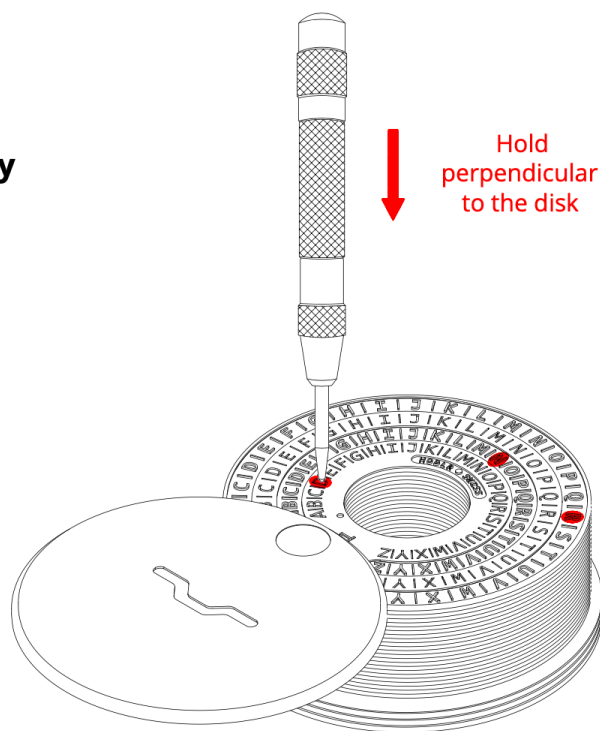
Use alcohol / acetone to erase the marker if needed.

07

PUNCH YOUR SEED

USE THE AUTOMATIC CENTER PUNCH

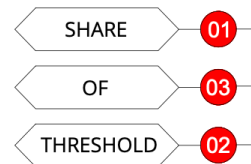
- **Before punching the disks, verify that your marks are correct by running the "CHECK RECOVERY SEED" function on your hardware wallet.**
- **Apply firm downward pressure directly on your pre-marked letters until the spring strikes.**
- For your comfort, use the earplugs included in this package.
- To adjust the center punch striking strength, turn the screw at the end. Screwing out lessens the impact. Screwing in makes it stronger.
- Spin and punch the disks one after another, until all the words on your Recovery Scheme Sheet are engraved.



USE THE AUTOMATIC CENTER PUNCH

- Punch the "SHARE" , "OF" , "THRESHOLD" numbers onto the HODLR bottom plate.
- Always refer to your Recovery Scheme Sheet.

HODLR 1



GLOSSARY

SHARE

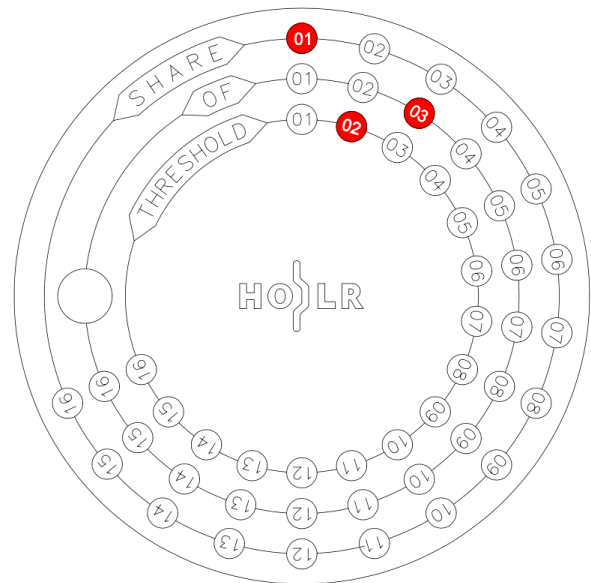
Number of sub parts that compose a seed

OF

The total number of shares

THRESHOLD

Minimum number of shares to recover the seed

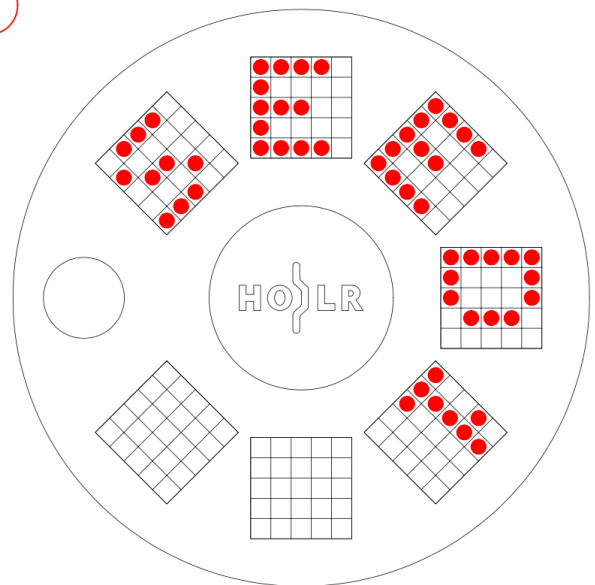


*Example: HODLR 1
1st share of a Split 2-of-3*

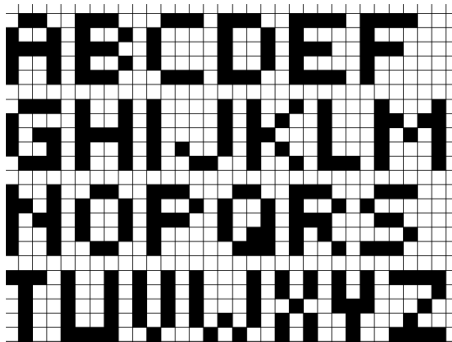
USE THE AUTOMATIC CENTER PUNCH

- **Punch the back of your HODLR.**
Use the 7 grids as a guide to engrave the letters.

- It is useful to name your seed to easily identify it later on.
This is specially true if your Recovery Scheme is made of multiple shares.
- Bear in mind that every HODLR holding the same seed should have the same name.



ALPHABET GRID GUIDE



Example: SEED 1

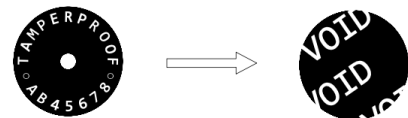
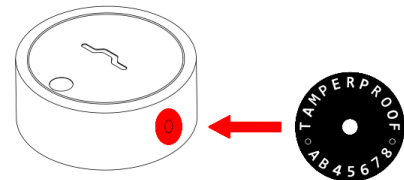
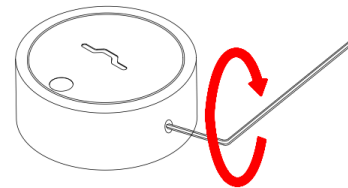
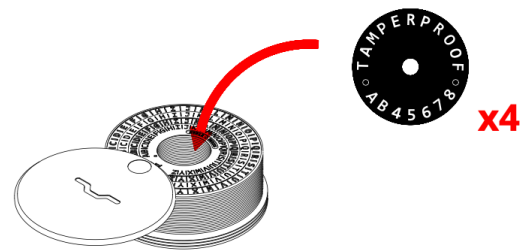
Note: It is easier to close your HODLR before punching the back.

10

SEAL YOUR HODLR

USE THE WRENCH AND SEALS

- Take 1 tamper-proof sticker out of the earplug box and keep the 4 others inside the HODLR for future uses.
 - Close the ring and use the wrench to fasten the hexagonal socket screw until the ring is sealed.
 - Cover the hexagonal socket screw hole with the tamper-proof sticker.
- The tamper-proof seal is void when removed and has a unique serial number.
- The best practice is to write down this number in your notes and avoid taking pictures of it with your phone.



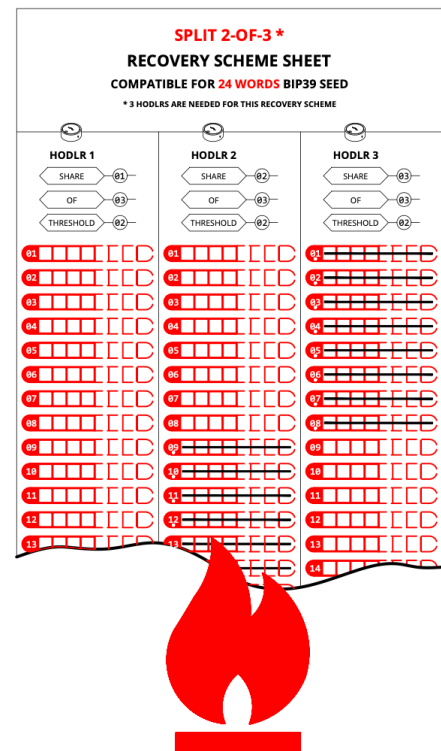
11

DESTROY YOUR SCHEME SHEET

BURN WITH CAUTION

- **Safely burn the paper above a sink, using a lighter or matches.**

- Don't throw it in the garbage without burning it.
Your seed would be compromised if anyone finds it.



KEEP IT PRIVATE

Use a safe and discrete location.
The bottom magnet of your HODLR
can help you secure it in secret places.

**100% OFFLINE**

Always keep your HODLR away from cameras.
Note that there might be a camera on your
computer, your phone or around you.

**REDUNDANCY**

Store your HODLRs in different places to achieve a
stronger protection.
Each location (or person) should hold only 1 HODLR.

EMERGENCY ACCESS

Limit the access to a very few trusted individuals.
Plan a way for your close ones to access your
HODLR in case of accidents or death.



With freedom comes great responsibility.
HODLR can not be held responsible for any
asset losses. **Don't trust. Verify.**

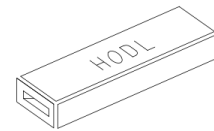
R

WALLET RECOVERY PROTOCOL

GET YOUR HODLR(s) AND WALLET

- Start the recovery process on your hardware wallet.
- Read the words from your HODLR(s) and enter them into your hardware wallet.
Use the illustration on page 06
- Store your HODLR(s) back in a safe place.

FROM YOUR
HODLR



TO YOUR
HARDWARE WALLET