

## TESTIMONIAL

“

STAR\*NET is an essential tool for anyone combining conventional survey measurements with GPS measurements. It is extremely simple to use and is completely reliable. Its ability to flag inconsistencies in a survey network gives me a great deal of confidence.

—Ted Eaton, BCLS, CLS  
Eaton Land Surveying Ltd.

```
Observed Values:
Observed Reference: 1.
Distance Calculated:
Distance Error:
# BS Elevation:
# BS Elevation Error:
M 1-2-3 305-14-29.20
M 1-2-4 179-05-04.10
M 1-2-5 180-05-35.80
M M <at>-<from>-<to> <horizAngle>
M 1-2-7 92-06-03.20
M 1-2-8 103-02-59.00
M 1-2-9 138-18-13.60
M 1-2-10 115-16-17.00
# Orientation
# setup_time,DT06-15-2016,TM19:45:
DV 10-1
Orientation Notes
Observed Values: HA 0
!!!
```

## ABOUT US

Thank you for your interest in STAR\*NET - helping you get the most out of least squares!

Since 1985, MicroSurvey has developed a family of specialized computer software for land surveyors, civil engineers, mapping technologists, engineering technicians, drafting technologists, police officers, and accident reconstruction specialists. MicroSurvey supports what it builds, and the staff values and listens to its customers.

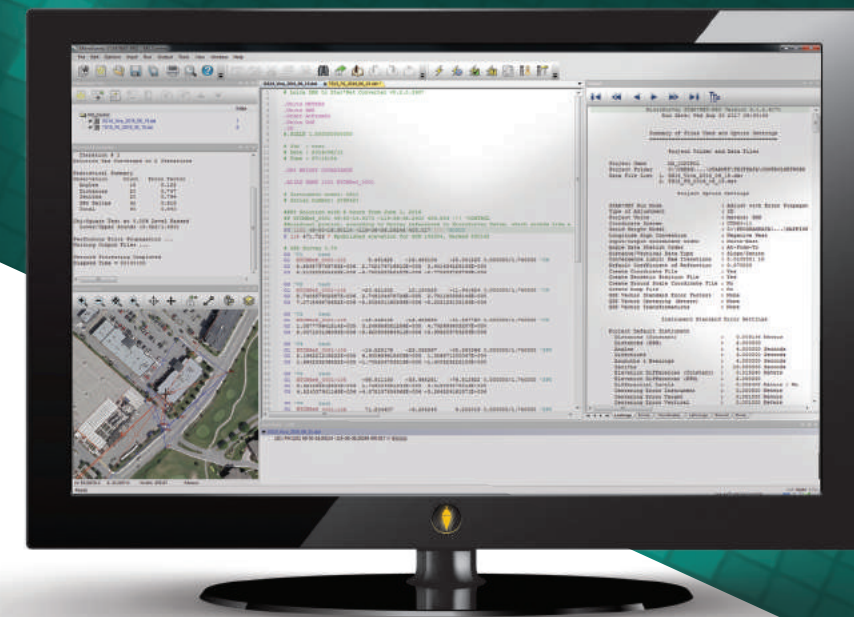
**WE ARE READY TO BE YOUR  
SOFTWARE SOLUTIONS.**

### MICROSURVEY SOFTWARE INC.

Head office:  
#205-3500 Carrington Rd,  
West Kelowna, Canada

☎ 800-668-3312  
✉ [marketing@microsurvey.com](mailto:marketing@microsurvey.com)  
🌐 [www.microsurvey.com](http://www.microsurvey.com)

GET THE MOST OUT OF YOUR  
**LEAST SQUARES.**



**MicroSurvey®**  
**STAR\*NET**

[WWW.MICROSURVEY.COM/STARNET](http://WWW.MICROSURVEY.COM/STARNET)



# LEAST SQUARES ADJUSTMENT SOFTWARE

STAR\*NET handles networks containing conventional observations combined with GPS vectors, with up to 10,000 adjustable stations. Differential leveling observations can also be included within a 3D adjustment.

STAR\*NET IS AN EASY-TO-USE WINDOWS APPLICATION  
THAT ADJUSTS 2D/3D SURVEY NETWORKS.



## Instruments and Integration

Conventional total station measurements can be combined with GPS vectors/leveling data. Create schemes for your instrument library; adjust weighting and specifications in order to compensate for varying levels of equipment quality and standard errors for specific crews.



## Output Results

STAR\*NET results are well formatted for quick review. The Sum of Squares, Error Factors, and Chi-Square test are sensitive to the inputs and give excellent feedback on what needs to be done to improve your results.



## Command Help Tips

The integrated data editor has been enhanced with inline help tips for data lines and inline options, which makes it easy to manually modify your data files without having to remember specific syntax or cross-referencing the help files.



## Column Editing

The integrated data editor has been enhanced with column editing capabilities like other advanced text editor programs. Hold down the "Alt" key while dragging your cursor to select columns of text and/or to make the cursor span multiple rows.



## Input Files and Editing

The built-in data input file editor is easy to use, and will automatically color-coordinate your data and comments. Use the bookmarking feature to mark specific lines in your data file for easy cross-referencing and lookup, or to simply segment your data file and quickly jump to specific sections.



## Customizable Interface

With your data files list, editor window, output summary, network plot and processing summary, you have a lot of on-screen information that needs to be at hand for crossreferencing, quick fixes and reprocessing.



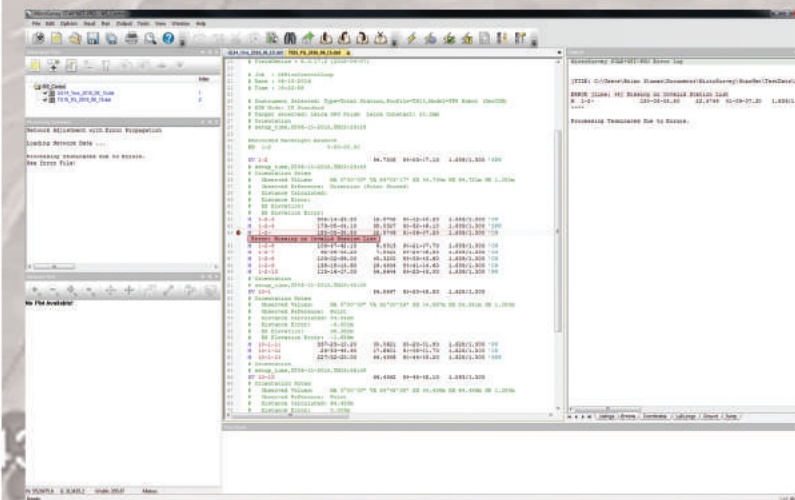
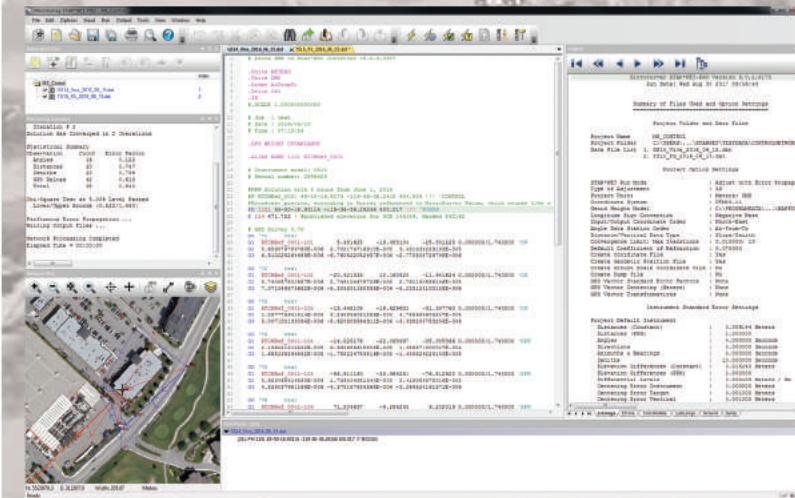
## Command Autocompletion

The integrated data editor has been enhanced with an auto-completion feature for inline options. It will determine what command you are starting to type and let you select the applicable keywords for that command.



## 64-bit Version

STAR\*NET 9 is now available in both 32-bit and 64-bit versions. The 64-bit version can access more memory and execute faster than the 32-bit version.



There is no other Least Squares tool available that is as comprehensive as STAR\*NET. With a graphical display of your entire survey network, you will find it easy to tighten things up.

## OUR EDITIONS.



### LEV

Entry level STAR\*NET edition that allows you to adjust all observations simultaneously.



### PLUS

Adjust in 1D, 2D or 3D survey networks using rigorous Least Squares.



### Ultimate

Includes all the converters, plus the command line, and the station limit increase



### STANDARD

All LEV edition features plus graphical display of your entire survey and able to adjust 2D/3D networks.



### PRO

Include all Plus features and also includes GPS vectors combined with conventional measurements

MicroSurvey  
**STAR\*NET**