



**Teagan Halo**

WS:\$130 R: \$285

A double halo wreath of flowers in our resin and mother of pearl. Accented with pearls.

Lead time: 2-3 weeks

*Accent Color: gold or silver*



**Hazel Comb**

WS:\$66 R: \$145

Mother-of-Pearl art deco comb with crystal accent.

Lead time: 2-3 weeks

*Accent color: gold or silver*



**Brielle Pins**

WS:\$80 R: \$175

Beaded white and moonstone hair pins. Set of 3.

Lead time: 2-3 weeks

*Accent color: gold or silver*



**Ada Comb**

WS:\$111 R: \$245

Beaded white and moonstone comb.

Lead time: 2-3 weeks

*Accent color: gold or silver*



### Dubois Comb

WS:\$125 R: \$275

Statement comb in crystal and moonstone.

Lead time: 2-3 weeks

*Accent color: gold or silver*



### Maya Clips

WS:\$125 R: \$275

Set of 2 MOP resin wave hair clips.

Lead time: 2 weeks

*Color: as is*



### Audrey Sash

Original: WS:\$148 R: \$325  
 Extended Sizing: WS:\$148 R: \$325

Made for brides that want that clean beaded look, our Audrey sash has all your favorite details, without any metal accents.

Set on a satin sash (4 color options)

Beading measures 14" or 25" across

Lead time: 3-4 weeks

*Sash colors: Light Ivory, Ivory, Blush, Nude*



### Lilliana Sash

Original: WS:\$98 R: \$215  
 Extended Sizing: WS:\$128 R: \$280

Beaded white stone belt with opal detail.

Beading in 14" or 25" length

Lead time: 2-4 weeks

*Sash colors: Light Ivory, Ivory, Blush, Nude*



**Harriet Sash**

Original: WS:\$107 R: \$235  
 Extended Sizing: WS:\$139 R: \$305

Art deco minimalist sash with mother-of-pearl and moonstone detail.

Set on a satin sash. (more colors)

Measures approx 14" or 25" across.

Lead time: 2-4 weeks



**Dakota Sash**

Original: WS:\$120 R: \$265  
 Extended Sizing: WS:\$152 R: \$335

Luminescent shell motif sash with opal center detail. Set on a thin shimmery sash.

Detail measures 13" or 23" across.

Lead time: 2-3 weeks

*Sash colors: Gold, silver or Light Ivory,*

*Ivory, Blush, Nude*



**Rylee Sash**

Original: WS:\$95 R: \$210  
 Extended Sizing: WS:\$125 R: \$275

Our new minimalist belt with **gold** and moonstone detail.  
 Set on a delicate thin gold sash.

Detail measures 15" or 25" across.

Lead time: 2-4 weeks



**Emerson Sash**

Original: WS:\$95 R: \$210  
 Extended Sizing: WS:\$125 R: \$275

Our new minimalist belt with **silver** and moonstone detail.  
 Set on a delicate thin silver sash.

Detail measures 15" or 25" across.

Lead time: 2-4 weeks



**Milly in Silver**

Original: WS:\$102 R: \$225  
 Extended Sizing: WS:\$136 R: \$300

The best seller Milly belt, no  
 with silver accents!

Detail measures 15" or 25" across.

Lead time: 2-3 weeks

*Sash colors: Light Ivory, Ivory,  
 Blush, Nude*



**Arya Sash**

Original: WS:\$89 R: \$195  
 Extended Sizing: WS:\$123 R: \$270

Modern glam crystal minimalist belt  
 with baquette shape detail.

Detail measures 15" or 25" across.

Lead time: 2-3 weeks

*Crystal casing: gold or silver*

*Sash colors: Light Ivory, Ivory,  
 Blush, Nude*



**Eliza Bangle**

WS:\$42 R: \$92

Lucite and pearl beaded cuff!  
Available with gold or silver  
metal accents.

One size.

Lead time: 2-3 weeks

*Accent Color: gold or silver*



**Kendall Bangle**

WS:\$42 R: \$92

White resin bangle with pearl detail.  
Can be made with gold or silver  
metal accent.

One size.

Lead time: 2-3 weeks

*Accent Color: gold or silver*





**Mamie Cuff**

WS:\$52 R: \$115

Painted resin flowers with pearls and mini mother-of-pearl accent flowers.

Easily adjustable.

Lead time: 1-2 weeks

*Color: brass or silver cuff*

**Emery Cuff**

WS:\$52 R: \$115

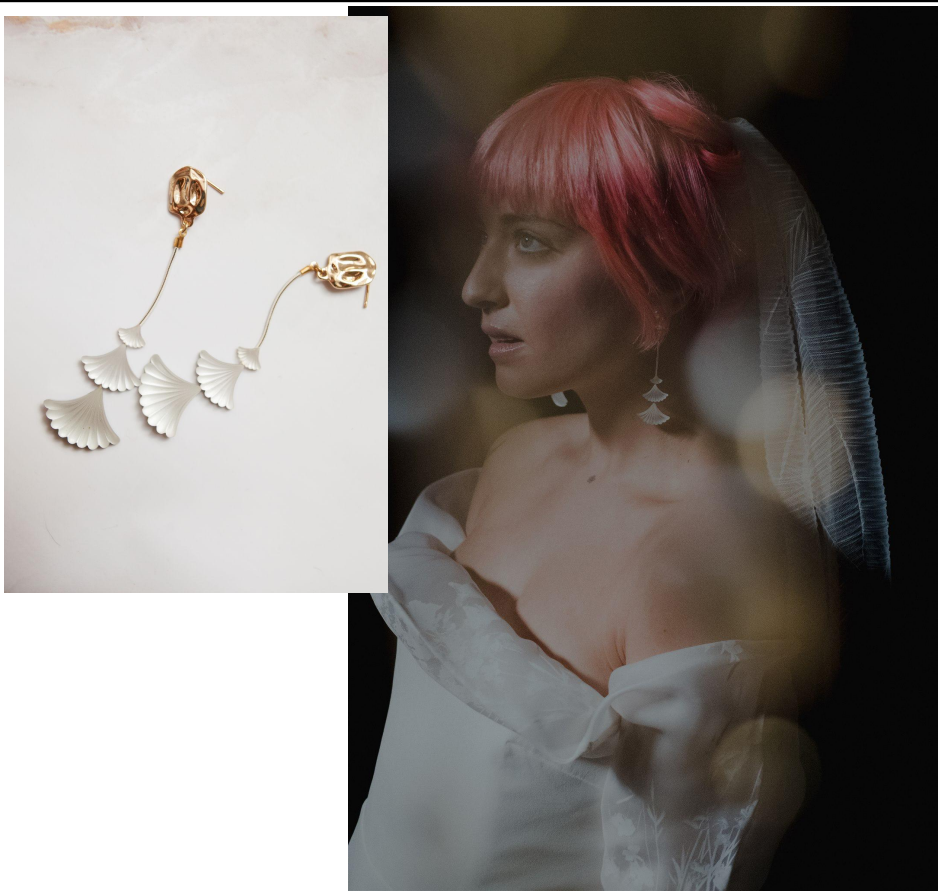
Luminescent shell motif stones with an opal center detail.

Easily adjustable.

Lead time: 1-2 weeks

*Color: brass or silver cuff*





### Shona Earrings

WS:\$48 R: \$105

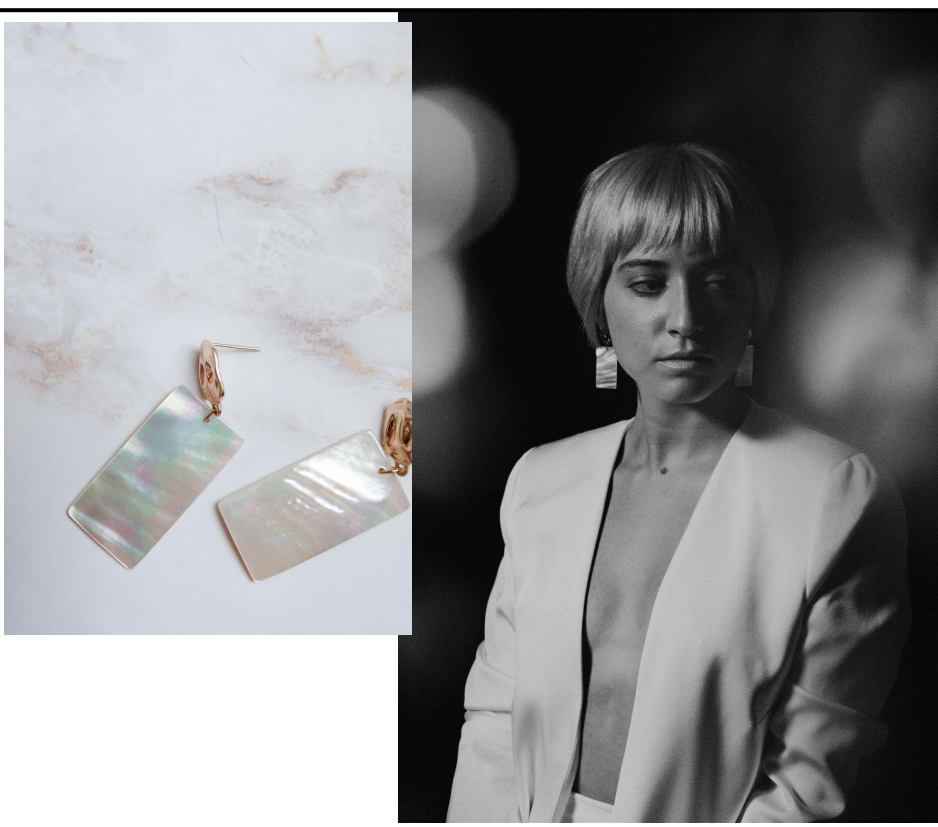
Shell motif drop with marquis shaped earring stud.

Made in 14K or Sterling Silver.

Available as a clip on.

Lead time: 2-3 weeks

*Accent color: 14k or sterling*



### Clair earrings

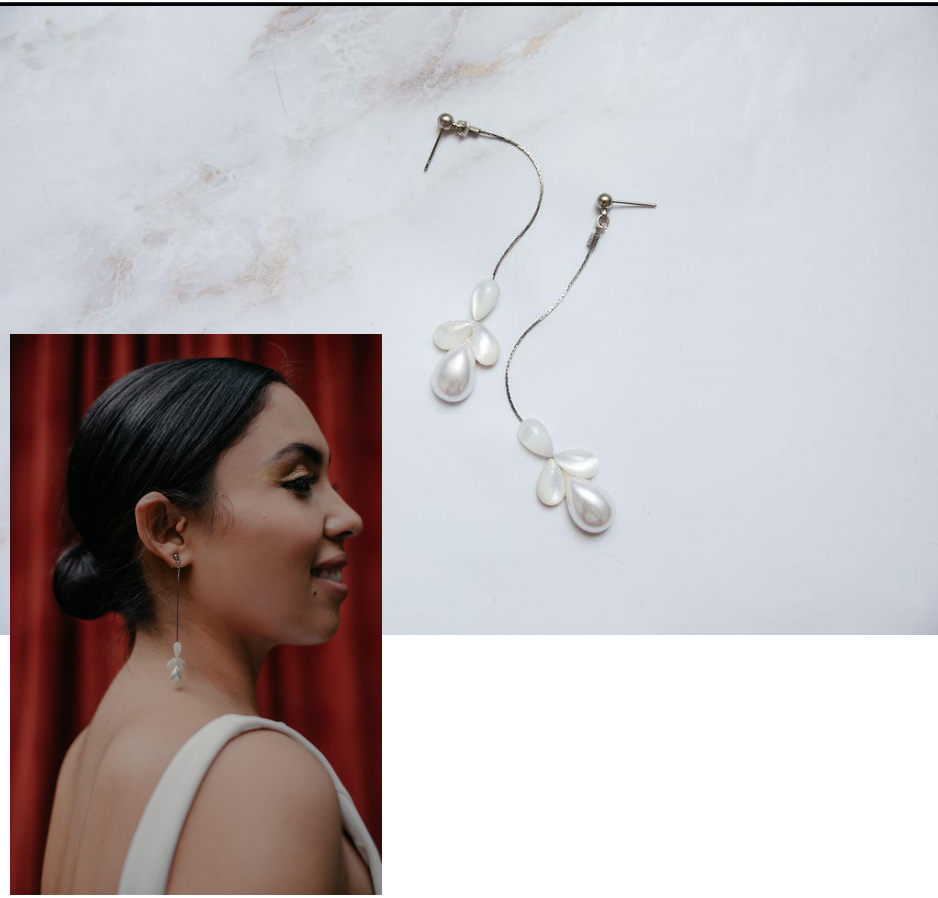
WS:\$50 R: \$110

"Molten clay" style earring post with a rectangular mother-of-pearl drop.  
Can be made with gold or silver accent.

Available as a clip on.

Lead time: 2-3 weeks

*Accent color: 14k or sterling*



**Caroline Earrings**

WS:\$48 R: \$105

Metal, pearl and mother of pearl drop earrings in a clean boroque style motif.

Available as a clip on.

Lead time: 2-3 weeks

*Metal color: gold or silver*



**Jordyn Earrings**

WS:\$43 R: \$95

Teardrop hoop earring with pearl accent. Measures 1.5" long.

Gold is 14K, silver is rhodium.

Lead time: 1 week

*Color: 14K gold or rhodium silver*



**Elodie earrings**

WS:\$41 R: \$89

Porcelain leaf shaped cluster earrings on a gold or silver marquise stud.

Measures about 1.5"

Available as a clip on.

Lead time: 2-3 weeks

*Metal color: 14k gold or sterling silver*



**Vivian Earrings**

WS:\$57 R: \$125

Cluster drop earrings with porcelain leaf motif and marquise earring post.

Available in gold or silver.

Measures approx 3" long.

Available as a clip on.

Lead time: 2-3 weeks

*Color: as is*



### Helen Earrings

WS:\$54 R: \$120

Asymmetric crystal and moonstone earrings in a beautiful drop motif.

Available in gold or silver accents.

Measures approx 2.5" long.

Available as a clip on.

Lead time: 2-3 weeks

*Metal Color: gold or silver*



### Kaylee Earrings

WS:\$52 R: \$115

Floral drop earrings in painted resin and mother of pearl.

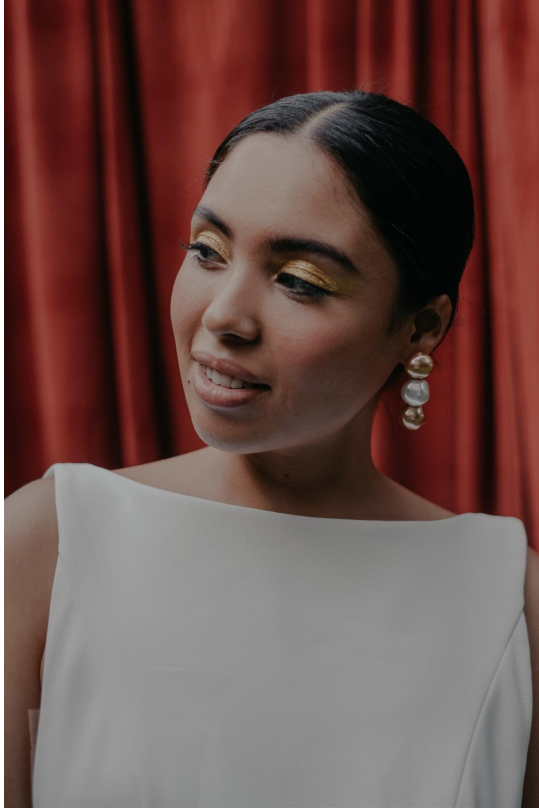
Accented with pearls (pearls come in a gold or silver casing)

Measures about 3" long.

Available as a clip on.

Lead time: 2-3 weeks

*Color: gold or silver detailing*



**Andrea Earrings**

WS:\$37 R: \$82

Two tone faux pearl drop.

Drop measures approx 2.5"

Available as a clip on.

Lead time: 2-3 weeks

*Color: as is.*



**Jane Earrings**

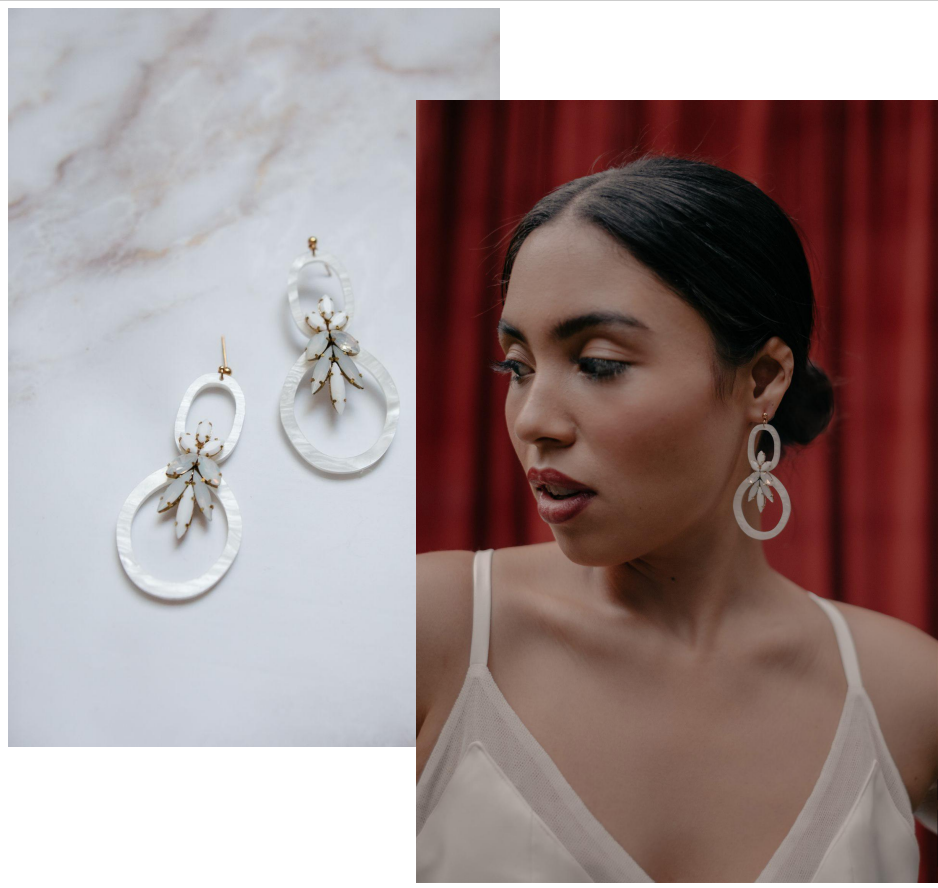
WS:50 R: \$110

Asymmetric celestial  
MOP drop earrings!

measures approx 2 & 3" long.

Lead time: 2-3 weeks

*Color: as is.*



### Magdalena Earrings MOP

WS:\$52 R: \$115

Mother-of-Pearl resin double hoop motif earring with beading.

Drop measures approx 3"

Can be made with gold or silver details.

Lead time: 2-3 weeks

*Metal color: gold or silver*



**Kaia Veil**

WS:\$184 R: \$405

Beautifully textured full length off white veil with a geometric design.

Set on a gold comb.

90" long.

Lead time: 2-3 weeks

*Color: as is.*



**Kennedy Veil**

WS:\$148 R: \$395

Luxurious, soft english tulle that drapes elegantly over the body.

Set on

Set on a comb.

90" long.

Lead time: 2-3 weeks

*Color: as is.*