



CERTIFICATE OF ANALYSIS WITH PRODUCT SPECIFICATIONS

FDA #: 15910499580

PRODUCT: Also Organics 1000 mg CBD Skin Balm

PRODUCT CODE: 850012310143

PRODUCT DESCRIPTION: 1 oz Topical Pain Salve

LOT NUMBER: 012322

MFG DATE: January 23, 2020

USES: Skin moisturizer & protectant.

DOSAGE: As needed.

STORAGE: Cool and dry, below 30c.

SHELF LIFE: 24 months unopened – 12 months after opening in sealed container.

INGREDIENTS LIST: Olea Europaea, Bees Wax, Hemp Oil, Butyrospermum Parkii, Arnica, Lavender Oil, Phyto Rich Full Spectrum Hemp Extract, DMSO, Peppermint Oil, Eucalyptus Oil, Camphor Oil, Menthol, Celery Oil.

PACKAGING: 1 oz tin.

CERTIFICATION: This product is in compliance with U.S. Federal regulations.

MISC:

Sanitizing Treatment:	Non-Irradiated / Non ETO.
Certification Status:	cGMP, Derived from organic sources.
Genetic Modification Status:	GMO free.
Country of Origin:	United States.
Vegetarian Status:	Suitable for vegans and vegetarians.
Animal testing status:	Negative.



CERTIFICATE OF ANALYSIS WITH PRODUCT SPECIFICATIONS

FDA #: 15910499580

Micro Analysis

PARAMETER	UNIT OF MEASURE	STANDARD	MEAN RESULT
Aerobic Plate Count	cfu/g	< 10,000	Conforms
Coliforms	cfu/g	0	Not Detected
E. Coli Count Plate	cfu/g	0	Not Detected
Yeast & Mold	cfu/g	< 1	Not Detected
Salmonella	BAM /25g	Negative	Negative
Coag Positive Staph Aure	cfu/g	0	Not Detected
Heavy Metal	ICP-MS		Conforms
Arsenic	ppm	Report Only	Not Detected
Cadmium	ppm	Report Only	Not Detected
Lead	ppm	Report Only	Not Detected
Mercury	ppm	Report Only	Not Detected

Cannabinoid Profile / % by volume / volume per bottle

Component	%	mg
CBD	4.16	1185.60
CBG	0.02	5.70
CBN	0.03	8.55
CBC	<LOQ	
D9THC	0.29	82.65
Total Cannabinoids	4.5	1282.50

N/D = Below Detectable Threshold, N/T = Not Tested, <LOQ = Below Level of Quantification

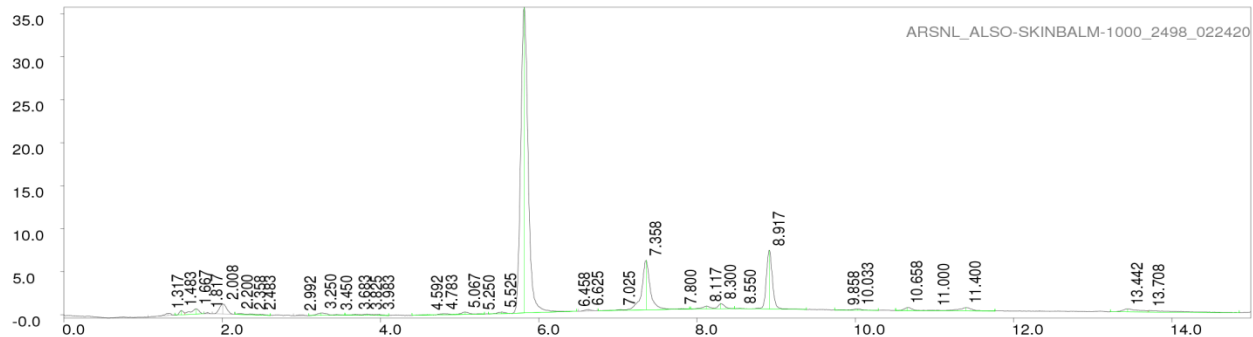


CERTIFICATE OF ANALYSIS WITH PRODUCT SPECIFICATIONS

FDA #: 15910499580

Chromatograph

PAGE 1 LP-chrom 2.10 2018-Dec-16 12:28:08



```

Program: LP-chrom 2.10 2018-Dec-16 12:28:08
Running under: Windows NT 6.1 (build 7601, Service Pack 1)
Plot: C:\lp_chrom\data\ARSNL_ALSO-SKINBALM-1000_2498_022420
Exported: 02/25/20 13:44:53.113
Program: LP-chrom 2.10 2018-Dec-16 12:28:08
System: Windows NT 6.1 (build 7601, Service Pack 1)
Chromatograph using method:
from file: cannabinoids
Analytical pump method (max flow = 10 [ml/min])
TIME FLOW %A %B
0.0 0.700 30 70
0.5 0.700 30 70
6.0 0.700 5 95
12.0 0.700 5 95
12.1 0.700 30 70
15.0 0.700 30 70
  
```

```

Autozero before rec
Detector Beckman 166 DET/3 on serial port:COM28
Det:A, wavelen 280 nm
Pump A: Beckman 126 PUMP/2 on serial port:COM28
  
```

peak num	retention time [min]	area [mVolt*min]	area percent [%]	height [mVolt]	begin [min]	end [min]	max Y [mVolt]	type (S)ingle (R)+(L)
1	1.31667	0.03016	0.49748	0.28458	1.05833	1.40000	0.19914	S
2	1.48333	0.02882	0.47533	0.49260	1.40000	1.52500	0.49828	R+
3	1.66667	0.07897	1.30244	0.62386	1.52500	1.76667	0.70136	+L
4	1.81667	0.00711	0.11725	0.14070	1.76667	1.87500	0.26142	S
5	2.00833	0.12315	2.03097	1.16826	1.87500	2.15000	1.26499	S
6	2.20000	0.00822	0.13549	0.08522	2.15833	2.31667	0.14738	R+
7	2.35833	0.00712	0.11736	0.08168	2.31667	2.42500	0.09167	R+L
8	2.48333	0.01084	0.17874	0.09655	2.42500	2.60833	0.06535	+L
9	2.99167	0.00847	0.13973	0.10525	2.90000	3.09167	0.00570	S
10	3.25000	0.04194	0.69171	0.29717	3.09167	3.38333	0.22633	R+
11	3.45000	0.00883	0.14558	0.09423	3.38333	3.55000	0.04693	+L
12	3.68333	0.01077	0.17765	0.10326	3.55000	3.75000	0.05965	R+
13	3.82500	0.01716	0.28297	0.13466	3.75000	3.91667	0.08246	R+L
14	3.98333	0.01163	0.19176	0.12188	3.91667	4.10000	0.06009	+L
15	4.59167	0.01045	0.17228	0.06666	4.40000	4.69167	0.03597	R+
16	4.78333	0.01652	0.27245	0.11271	4.69167	4.93333	0.11755	R+L
17	5.06667	0.02994	0.49386	0.26238	4.93333	5.19167	0.31976	R+L
18	5.25000	0.00219	0.03613	0.03232	5.19167	5.31667	0.12369	+L
19	5.52500	0.02180	0.35948	0.17579	5.36667	5.63333	0.31932	R+
20	5.81667	3.85207	63.52893	35.55945	5.63333	6.39167	35.78558	R+L
21	6.45833	0.00133	0.02202	0.01761	6.39167	6.48333	0.42546	+L
22	6.62500	0.01859	0.30660	0.18085	6.50000	6.74167	0.61758	S
23	7.02500	0.01584	0.26126	0.11500	6.75000	7.07500	0.63030	R+
24	7.35833	0.71117	11.72873	5.76862	7.07500	7.72500	6.35347	R+L
25	7.80000	0.00563	0.09285	0.06033	7.72500	7.90833	0.73733	+L
26	8.11667	0.03569	0.58855	0.31485	7.91667	8.20000	1.01936	R+
27	8.30000	0.05555	0.91609	0.58558	8.20000	8.47500	1.30666	+L
28	8.55000	0.00218	0.03591	0.04441	8.47500	8.64167	0.77110	R+
29	8.91667	0.60876	10.03974	6.81792	8.64167	9.38333	7.49477	+L
30	9.85833	0.00374	0.06170	0.04107	9.74167	9.92500	0.60179	R+
31	10.03333	0.01889	0.31157	0.14917	9.92500	10.29167	0.69566	+L
32	10.65833	0.03878	0.63949	0.34576	10.50833	10.81667	0.85488	R+
33	11.00000	0.00891	0.14699	0.05512	10.81667	11.08333	0.54696	R+L
34	11.40000	0.07280	1.20069	0.37228	11.08333	11.76667	0.84391	+L
35	13.44167	0.07418	1.22333	0.31669	13.22500	13.70000	0.67373	R+
36	13.70833	0.06530	1.07692	0.15848	13.70000	14.85000	0.49608	+L
Sum area:		6.06349						
Peaks accepted:								36 (excluded: 16 total: 52)