



CERTIFICATE OF ANALYSIS WITH PRODUCT SPECIFICATIONS

FDA #: 15910499580

PRODUCT: Also Organics 500 mg CBD Skin Balm

PRODUCT CODE: 850012310136

PRODUCT DESCRIPTION: 1 oz Topical Pain Salve

LOT NUMBER: 012122

MFG DATE: January 21, 2020

USES: Skin moisturizer & protectant.

DOSAGE: As needed.

STORAGE: Cool and dry, below 30c.

SHELF LIFE: 24 months unopened – 12 months after opening in sealed container.

INGREDIENTS LIST: Olea Europaea, Bees Wax, Hemp Oil, Butyrospermum Parkii, Arnica, Lavender Oil, Phyto Rich Full Spectrum Hemp Extract, DMSO, Peppermint Oil, Eucalyptus Oil, Camphor Oil, Menthol, Celery Oil.

PACKAGING: 1 oz tin.

CERTIFICATION: This product is in compliance with U.S. Federal regulations.

MISC:

Sanitizing Treatment:	Non-Irradiated / Non ETO.
Certification Status:	cGMP, Derived from organic sources.
Genetic Modification Status:	GMO free.
Country of Origin:	United States.
Vegetarian Status:	Suitable for vegans and vegetarians.
Animal testing status:	Negative.



CERTIFICATE OF ANALYSIS WITH PRODUCT SPECIFICATIONS

FDA #: 15910499580

Micro Analysis

PARAMETER	UNIT OF MEASURE	STANDARD	MEAN RESULT
Aerobic Plate Count	cfu/g	< 10,000	Conforms
Coliforms	cfu/g	0	Not Detected
E. Coli Count Plate	cfu/g	0	Not Detected
Yeast & Mold	cfu/g	< 1	Not Detected
Salmonella	BAM /25g	Negative	Negative
Coag Positive Staph Aure	cfu/g	0	Not Detected
Heavy Metal	ICP-MS		Conforms
Arsenic	ppm	Report Only	Not Detected
Cadmium	ppm	Report Only	Not Detected
Lead	ppm	Report Only	Not Detected
Mercury	ppm	Report Only	Not Detected

Cannabinoid Profile / % by volume / volume per bottle

Component	%	mg
CBD	2.1	598.50
CBG	0.02	5.70
CBN	0.02	5.70
CBC	N/D	
D9THC	0.24	68.4
Total Cannabinoids	4.5	678.3

N/D = Below Detectable Threshold, N/T = Not Tested, <LOQ = Below Level of Quantification

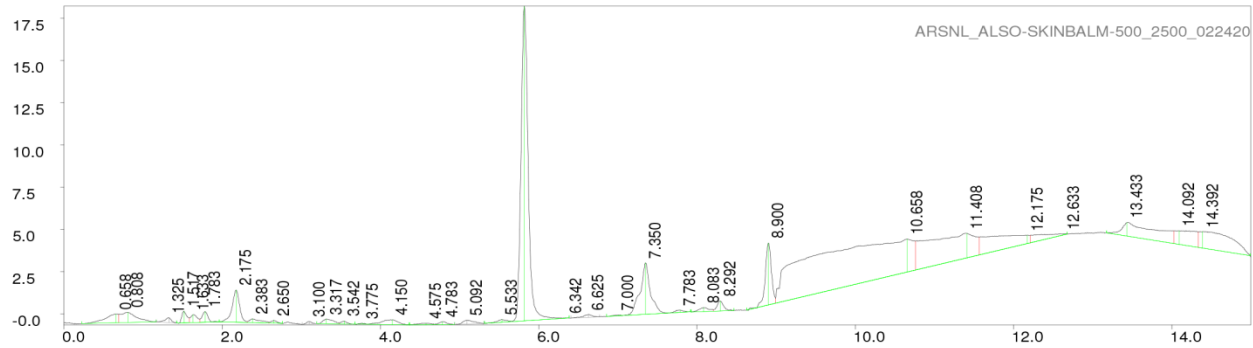


CERTIFICATE OF ANALYSIS WITH PRODUCT SPECIFICATIONS

FDA #: 15910499580

Chromatograph

PAGE 1 LP-chrom 2.10 2018-Dec-16 12:28:08



Program: LP-chrom 2.10 2018-Dec-16 12:28:08
 Running under: Windows NT 6.1 (build 7601, Service Pack 1)
 Plot: C:\lp_chrom\data\ARSNL_ALSO-SKINBALM-500_2500_022420
 Exported: 02/25/20 13:45:45.909
 Program: LP-chrom 2.10 2018-Dec-16 12:28:08
 System: Windows NT 6.1 (build 7601, Service Pack 1)
 Chromatograph using method:
 from file: cannabinoids
 Analytical pump method (max flow = 10 [ml/min])

TIME FLOW %A %B
 0.0 0.700 30 70
 0.5 0.700 30 70
 6.0 0.700 5 95
 12.0 0.700 5 95
 12.1 0.700 30 70
 15.0 0.700 30 70

Autozero before rec
 Detector Beckman 166 DET/3 on serial port:COM28
 Det:A, wavelen 280 nm
 Pump A: Beckman 126 PUMP/2 on serial port:COM28

peak num	retention time [min]	area [mVolt*min]	area percent [%]	height [mVolt]	begin [min]	end [min]	max Y [mVolt]	type (S)ingle (R)+(L)
1	0.65833	0.10424	0.99320	0.53091	0.22500	0.69167	0.00702	R+
2	0.80833	0.14451	1.37691	0.61311	0.69167	1.16667	0.10571	+L
3	1.32500	0.02672	0.25464	0.28265	1.16667	1.42500	-0.22085	S
4	1.51667	0.04994	0.47579	0.68227	1.42500	1.58333	0.16624	R+
5	1.63333	0.04583	0.43664	0.46596	1.58333	1.71667	-0.03750	R+L
6	1.78333	0.05463	0.52050	0.62766	1.71667	1.95833	0.14036	+L
7	2.17500	0.21038	2.00456	1.91818	1.95833	2.31667	1.42597	R+
8	2.38333	0.03760	0.35830	0.23740	2.31667	2.59167	-0.27765	R+L
9	2.65000	0.01364	0.12993	0.16401	2.59167	2.75833	-0.38029	+L
10	3.10000	0.01136	0.10828	0.15111	3.00833	3.19167	-0.43906	S
11	3.16667	0.04131	0.39364	0.28020	3.19167	3.47500	-0.29212	R+
12	3.54167	0.01352	0.12880	0.16802	3.47500	3.67500	-0.41757	+L
13	3.77500	0.00323	0.03079	0.05006	3.67500	3.83333	-0.54960	R+
14	4.15000	0.06785	0.64646	0.28777	3.83333	4.35833	-0.33511	+L
15	4.57500	0.01514	0.14427	0.08831	4.36667	4.67500	-0.54170	R+
16	4.78333	0.02018	0.19225	0.17399	4.67500	4.93333	-0.45134	+L
17	5.09167	0.03675	0.35017	0.23345	4.94167	5.30833	-0.36186	S
18	5.53333	0.01946	0.18542	0.15463	5.31667	5.65833	-0.32480	R+
19	5.81667	1.94523	18.53452	18.61594	5.65833	6.28333	18.21737	R+L
20	6.34167	0.00175	0.01663	0.02571	6.28333	6.38333	-0.22304	+L
21	6.62500	0.01969	0.18758	0.16205	6.40833	6.76667	-0.02676	S
22	7.00000	0.00600	0.05719	0.06008	6.85833	7.05833	-0.04606	R+
23	7.35000	0.45534	4.33857	3.05067	7.05833	7.61667	3.03396	R+L
24	7.78333	0.01896	0.18061	0.14592	7.61667	7.91667	0.23993	+L
25	8.08333	0.03436	0.32742	0.23967	7.92500	8.20833	0.38950	R+
26	8.29167	0.05559	0.52963	0.58327	8.20833	8.46667	0.76979	+L
27	8.90000	0.33732	3.21401	3.67651	8.63333	8.99167	4.20772	R+
28	10.65833	3.67050	34.97316	1.95887	8.99167	10.75833	4.44545	R+L
29	11.40833	1.18520	11.29283	1.46081	10.75833	11.56667	4.78144	R+L
30	12.17500	0.49930	4.75742	0.50734	11.56667	12.20833	4.68056	R+L
31	12.63333	0.11502	1.09597	0.06805	12.20833	12.67500	4.75096	+L
32	13.43333	0.45264	4.31284	0.80750	13.17500	14.02500	5.41701	R+
33	14.09167	0.25973	2.47479	0.81438	14.02500	14.33333	4.93320	R+L
34	14.39167	0.52227	4.97626	0.99104	14.33333	14.99167	4.88627	+L

Sum area: 10.49518
 Peaks accepted: 34 (excluded: 4 total: 38)