



CERTIFICATE OF ANALYSIS WITH PRODUCT SPECIFICATIONS

FDA #: 15910499580

PRODUCT:	Also Organics 50 mg CBD Capsules	
PRODUCT CODE:	850012310105	
PRODUCT DESCRIPTION:	30 cnt Capsules	
LOT NUMBER:	012722	
MFG DATE:	January 27, 2020	
USES:	As a dietary supplement used as an anti-inflammatory, anticonvulsant, antioxidant, antiemetic, anxiolytic and antipsychotic agent.	
DOSAGE:	As needed.	
STORAGE:	Cool and dry, below 30c.	
SHELF LIFE:	24 months unopened – 12 months after opening in sealed container.	
INGREDIENTS LIST:	Phyto Rich Full Spectrum Hemp Extract, Organic Rice Flour, Bovine Gelatin (capsule).	
PACKAGING:	2 oz glass jar.	
CERTIFICATION:	This product is in compliance with U.S. Federal regulations.	
MISC:	Sanitizing Treatment:	Non-Irradiated / Non ETO.
	Certification Status:	cGMP, Derived from organic sources.
	Genetic Modification Status:	GMO free.
	Country of Origin:	United States.
	Animal testing status:	Negative.



CERTIFICATE OF ANALYSIS WITH PRODUCT SPECIFICATIONS

FDA #: 15910499580

Micro Analysis

PARAMETER	UNIT OF MEASURE	STANDARD	MEAN RESULT
Aerobic Plate Count	cfu/g	< 10,000	Conforms
Coliforms	cfu/g	0	Not Detected
E. Coli Count Plate	cfu/g	0	Not Detected
Yeast & Mold	cfu/g	< 1	Not Detected
Salmonella	BAM /25g	Negative	Negative
Coag Positive Staph Aure	cfu/g	0	Not Detected
Heavy Metal	ICP-MS		Conforms
Arsenic	Ppm	Report Only	Not Detected
Cadmium	Ppm	Report Only	Not Detected
Lead	Ppm	Report Only	Not Detected
Mercury	Ppm	Report Only	Not Detected

Cannabinoid Profile / % by volume / volume per capsule

Component	%	mg
CBD	9.69	48.44
CBG	<LOQ	
CBN	0.05	0.25
CBC	<LOQ	
D9THC	0.19	0.94
Total Cannabinoids	9.93	49.63

N/D = Below Detectable Threshold, N/T = Not Tested, <LOQ = Below Level of Quantification

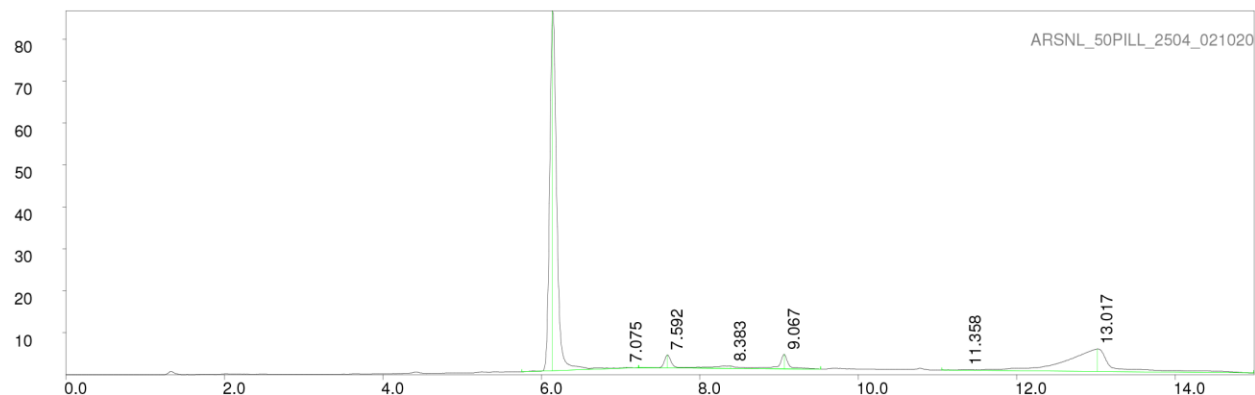


CERTIFICATE OF ANALYSIS WITH PRODUCT SPECIFICATIONS

FDA #: 15910499580

Chromatograph

PAGE 1 LP-chrom 2.10 2018-Dec-16 12:28:08



```

Program: LP-chrom 2.10 2018-Dec-16 12:28:08
Running under: Windows NT 6.1 (build 7601, Service Pack 1)
Plot: C:\lp chrom\data\ARSNL_50PILL_2504_021020
Exported: 02/10/20 09:32:25.535
Program: LP-chrom 2.10 2018-Dec-16 12:28:08
System: Windows NT 6.1 (build 7601, Service Pack 1)
Chromatograph using method:
from file: cannabinoids
Analytical pump method (max flow = 10 [ml/min])
TIME FLOW %A %B
0.0 0.700 30 70
0.5 0.700 30 70
6.0 0.700 5 95
12.0 0.700 5 95
12.1 0.700 30 70
15.0 0.700 30 70
  
```

```

Autozero before rec
Detector Beckman 166 DET/3 on serial port:COM28
Det:A, wavelen 280 nm
  
```

Pump A: Beckman 126 PUMP/2 on serial port:COM28

peak num	retention time [min]	area [mV*min]	area percent [%]	height [mV]	begin [min]	end [min]	max Y [mV]	type
1	6.14167	8.73982	63.98502	85.80351	5.75000	6.60000	86.81203	R+
2	7.07500	0.09492	0.69495	0.20114	6.60000	7.22500	1.79529	+L
3	7.59167	0.32406	2.37249	3.14150	7.22500	7.80000	4.78802	R+
4	8.38333	0.27123	1.98573	0.57270	7.80000	8.65000	2.12908	R+L
5	9.06667	0.46239	3.38523	3.42918	8.65000	9.52500	4.90776	+L
6	11.35833	0.02113	0.15473	0.11367	11.05000	11.46667	1.23648	R+
7	13.01667	3.74559	27.42184	5.37591	11.46667	14.99167	6.20346	+L

Sum area: 13.65916

Peaks accepted: 7 (excluded: 10 total: 17)