



## **CERTIFICATE OF ANALYSIS WITH PRODUCT SPECIFICATIONS**

FDA #: 15910499580

<b>PRODUCT:</b>	Also Organics 25 mg CBD Capsules	
<b>PRODUCT CODE:</b>	850012310099	
<b>PRODUCT DESCRIPTION:</b>	30 cnt Capsules	
<b>LOT NUMBER:</b>	012722	
<b>MFG DATE:</b>	January 27, 2020	
<b>USES:</b>	As a dietary supplement used as an anti-inflammatory, anticonvulsant, antioxidant, antiemetic, anxiolytic and antipsychotic agent.	
<b>DOSAGE:</b>	As needed.	
<b>STORAGE:</b>	Cool and dry, below 30c.	
<b>SHELF LIFE:</b>	24 months unopened – 12 months after opening in sealed container.	
<b>INGREDIENTS LIST:</b>	Phyto Rich Full Spectrum Hemp Extract, Organic Rice Flour, Bovine Gelatin (capsule).	
<b>PACKAGING:</b>	2 oz glass jar.	
<b>CERTIFICATION:</b>	This product is in compliance with U.S. Federal regulations.	
<b>MISC:</b>	Sanitizing Treatment:	Non-Irradiated / Non ETO.
	Certification Status:	cGMP, Derived from organic sources.
	Genetic Modification Status:	GMO free.
	Country of Origin:	United States.
	Animal testing status:	Negative.



## **CERTIFICATE OF ANALYSIS WITH PRODUCT SPECIFICATIONS**

FDA #: 15910499580

### **Micro Analysis**

<b>PARAMETER</b>	<b>UNIT OF MEASURE</b>	<b>STANDARD</b>	<b>MEAN RESULT</b>
Aerobic Plate Count	cfu/g	< 10,000	Conforms
Coliforms	cfu/g	0	Not Detected
E. Coli Count Plate	cfu/g	0	Not Detected
Yeast & Mold	cfu/g	< 1	Not Detected
Salmonella	BAM /25g	Negative	Negative
Coag Positive Staph Aure	cfu/g	0	Not Detected
Heavy Metal	ICP-MS		Conforms
Arsenic	ppm	Report Only	Not Detected
Cadmium	ppm	Report Only	Not Detected
Lead	ppm	Report Only	Not Detected
Mercury	ppm	Report Only	Not Detected

### **Cannabinoid Profile / % by volume / volume per capsule**

<b>Component</b>	<b>%</b>	<b>mg</b>
<b>CBD</b>	5.26	26.3
<b>CBG</b>	<LOQ	
<b>CBN</b>	0.05	0.25
<b>CBC</b>	<LOQ	
<b>D9THC</b>	0.24	1.2
<b>Total Cannabinoids</b>	5.55	27.75

N/D = Below Detectable Threshold, N/T = Not Tested, <LOQ = Below Level of Quantification

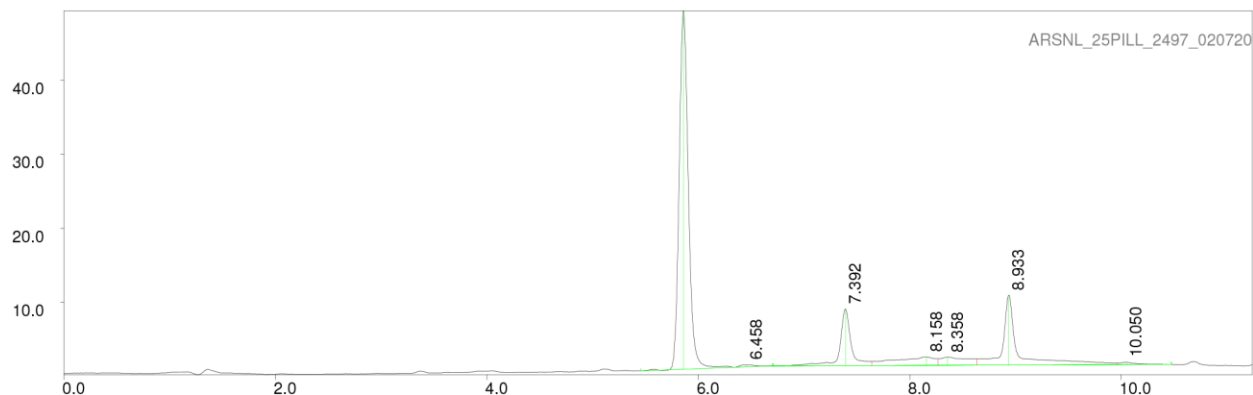


# CERTIFICATE OF ANALYSIS WITH PRODUCT SPECIFICATIONS

FDA #: 15910499580

## Chromatograph

PAGE 1 LP-chrom 2.10 2018-Dec-16 12:28:08



```

Program: LP-chrom 2.10 2018-Dec-16 12:28:08
Running under: Windows NT 6.1 (build 7601, Service Pack 1)
Plot: C:\lp chrom\data\ARSNL_25PILL_2497_020720
Exported: 02/08/20 10:52:17.816
Program: LP-chrom 2.10 2018-Dec-16 12:28:08
System: Windows NT 6.1 (build 7601, Service Pack 1)
Chromatograph using method:
from file: cannabinoids
Analytical pump method (max flow = 10 [ml/min])
TIME FLOW %A %B
0.0 0.700 30 70
0.5 0.700 30 70
6.0 0.700 5 95
12.0 0.700 5 95
12.1 0.700 30 70
15.0 0.700 30 70

```

```

Autozero before rec
Detector Beckman 166 DET/3 on serial port:COM28
Det:A, wavelen 280 nm
Pump A: Beckman 126 PUMP/2 on serial port:COM28

```

peak num	retention time [min]	area [mVolt*min]	area percent [%]	height [mVolt]	begin [min]	end [min]	max Y [mVolt]	type
1	5.85833	4.87028	58.19011	48.34415	5.45833	6.34167	49.39257	R+
2	6.45833	0.05035	0.60163	0.27352	6.34167	6.70000	1.62642	+L
3	7.39167	0.95467	11.40643	7.68007	6.70833	7.64167	9.19005	R+
4	8.15833	0.52431	6.26446	1.18938	7.64167	8.26667	2.74096	R+L
5	8.35833	0.34659	4.14107	1.10308	8.26667	8.63333	2.66552	R+L
6	8.93333	1.55458	18.57416	9.46539	8.63333	9.95833	11.05903	R+L
7	10.05000	0.06881	0.82213	0.34589	9.95833	10.47500	2.00013	+L

Sum area: 8.36961

Peaks accepted: 7 (excluded: 9 total: 16)