



CERTIFICATE OF ANALYSIS WITH PRODUCT SPECIFICATIONS

FDA #: 15910499580

PRODUCT: Also Organics 500 mg CBD Pain Salve

PRODUCT CODE: 850012310075

PRODUCT DESCRIPTION: 2 oz Topical Pain Salve

LOT NUMBER: 012822

MFG DATE: January 28, 2020

USES: Topical pain relief.

DOSAGE: As needed.

STORAGE: Cool and dry, below 30c.

SHELF LIFE: 24 months unopened – 12 months after opening in sealed container.

INGREDIENTS LIST: Olea Europaea, Bees Wax, Hemp Oil, Butyrospermum Parkii, Arnica, Lavender Oil, Phyto Rich Full Spectrum Hemp Extract, DMSO, Peppermint Oil, Eucalyptus Oil, Camphor Oil, Menthol, Celery Oil, Lidocaine.

PACKAGING: 2 oz glass jar.

CERTIFICATION: This product is in compliance with U.S. Federal regulations.

MISC:

Sanitizing Treatment:	Non-Irradiated / Non ETO.
Certification Status:	cGMP, Derived from organic sources.
Genetic Modification Status:	GMO free.
Country of Origin:	United States.
Vegetarian Status:	Suitable for vegans and vegetarians.
Animal testing status:	Negative.



CERTIFICATE OF ANALYSIS WITH PRODUCT SPECIFICATIONS

FDA #: 15910499580

Micro Analysis

PARAMETER	UNIT OF MEASURE	STANDARD	MEAN RESULT
Aerobic Plate Count	cfu/g	< 10,000	Conforms
Coliforms	cfu/g	0	Not Detected
E. Coli Count Plate	cfu/g	0	Not Detected
Yeast & Mold	cfu/g	< 1	Not Detected
Salmonella	BAM /25g	Negative	Negative
Coag Positive Staph Aure	cfu/g	0	Not Detected
Heavy Metal	ICP-MS		Conforms
Arsenic	ppm	Report Only	Not Detected
Cadmium	ppm	Report Only	Not Detected
Lead	ppm	Report Only	Not Detected
Mercury	ppm	Report Only	Not Detected

Cannabinoid Profile / % by volume / volume per bottle

Component	%	mg
CBD	1.74	495.9
CBG	0.20	57.0
CBN	0.14	39.9
CBC	<LOQ	
D9THC	0.03	8.55
Total Cannabinoids	4.15	601.35

N/D = Below Detectable Threshold, N/T = Not Tested, <LOQ = Below Level of Quantification

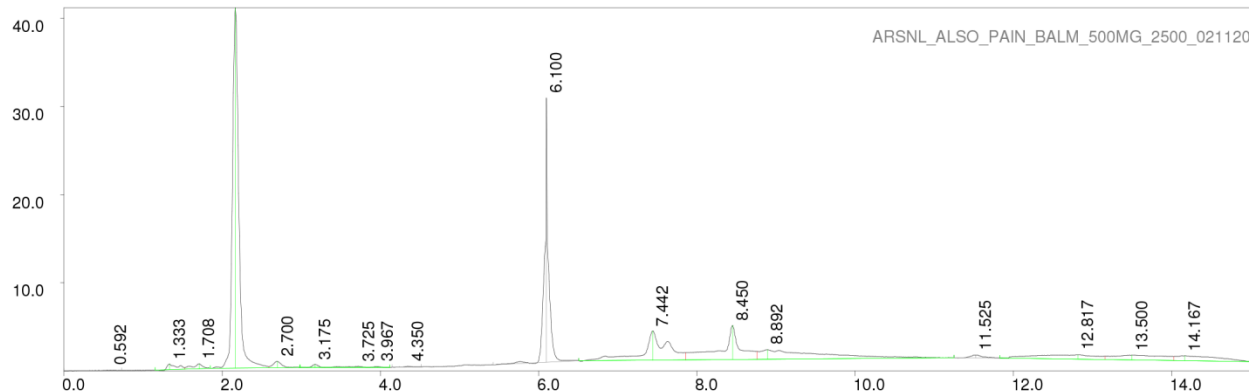


CERTIFICATE OF ANALYSIS WITH PRODUCT SPECIFICATIONS

FDA #: 15910499580

Chromatograph

PAGE 1 LP-chrom 2.10 2018-Dec-16 12:28:08



```

Program: LP-chrom 2.10 2018-Dec-16 12:28:08
Running under: Windows NT 6.1 (build 7601, Service Pack 1)
Plot: C:\Users\Panasonic\Downloads\ARSNL_ALSO_PAIN_BALM_500MG_2500_021120
Exported: 02/18/20 07:08:58.134
Program: LP-chrom 2.10 2018-Dec-16 12:28:08
System: Windows NT 6.1 (build 7601, Service Pack 1)
Chromatograph using method:
from file: cannabinoids
Analytical pump method (max flow = 10 [ml/min])
TIME FLOW %A %B
0.0 0.700 30 70
0.5 0.700 30 70
6.0 0.700 5 95
12.0 0.700 5 95
12.1 0.700 30 70
15.0 0.700 30 70
  
```

```

Autozero before rec
Detector Beckman 166 DET/3 on serial port:COM28
Det:A, wavelen 280 nm
  
```

Pump A: Beckman 126 PUMP/2 on serial port:COM28

peak num	retention time [min]	area [mV*min]	area [%]	height [mV]	begin [min]	end [min]	max Y [mV]	type (S)ngle (R)+(L) (S)+(L)
1	0.59167	0.01163	0.11521	0.03491	0.00000	0.72500	0.10834	S
2	1.33333	0.08473	0.83919	0.61821	1.15000	1.52500	0.78514	R+
3	1.70833	0.08269	0.81892	0.52589	1.52500	1.85000	0.79796	+L
4	2.16667	3.76714	37.30990	40.87225	1.85000	2.59167	41.21618	R+
5	2.70000	0.08668	0.85844	0.70350	2.59167	2.98333	1.10182	+L
6	3.17500	0.02500	0.24764	0.33473	2.98333	3.29167	0.76014	R+
7	3.72500	0.02919	0.28908	0.11471	3.29167	3.87500	0.53490	R+L
8	3.96667	0.01037	0.10271	0.10560	3.87500	4.11667	0.52350	+L
9	4.35000	0.00660	0.06537	0.06849	4.15000	4.51667	0.54039	S
10	6.10000	1.56232	15.47325	29.99086	5.42500	6.50000	30.99743	S
11	7.44167	1.13659	11.25688	3.33896	6.50833	7.85833	4.56564	R+
12	8.45000	1.08071	10.70342	3.88224	7.85833	8.75833	5.18410	R+L
13	8.89167	1.00543	9.95784	1.10440	8.75833	11.25000	2.43919	+L
14	11.52500	0.05621	0.55674	0.32989	11.25000	11.83333	1.83038	S
15	12.81667	0.42200	4.17954	0.49875	11.83333	13.15833	1.86415	R+
16	13.50000	0.39445	3.90668	0.52639	13.15833	14.02500	1.80581	R+L
17	14.16667	0.33514	3.31920	0.54404	14.02500	14.99167	1.73958	+L

Sum area: 10.09689

Peaks accepted: 17 (excluded: 0 total: 17)