



CERTIFICATE OF ANALYSIS WITH PRODUCT SPECIFICATIONS

FDA #: 15910499580

PRODUCT: Also Organics 1000 mg CBD Pain Salve

PRODUCT CODE: 850012310051

PRODUCT DESCRIPTION: 2 oz Topical Pain Salve

LOT NUMBER: 013022

MFG DATE: January 30, 2020

USES: Topical pain relief.

DOSAGE: As needed.

STORAGE: Cool and dry, below 30c.

SHELF LIFE: 24 months unopened – 12 months after opening in sealed container.

INGREDIENTS LIST: Olea Europaea, Bees Wax, Hemp Oil, Butyrospermum Parkii, Arnica, Lavender Oil, Phyto Rich Full Spectrum Hemp Extract, DMSO, Peppermint Oil, Eucalyptus Oil, Camphor Oil, Menthol, Celery Oil, Lidocaine.

PACKAGING: 2 oz glass jar.

CERTIFICATION: This product is in compliance with U.S. Federal regulations.

MISC:

Sanitizing Treatment:	Non-Irradiated / Non ETO.
Certification Status:	cGMP, Derived from organic sources.
Genetic Modification Status:	GMO free.
Country of Origin:	United States.
Vegetarian Status:	Suitable for vegans and vegetarians.
Animal testing status:	Negative.



CERTIFICATE OF ANALYSIS WITH PRODUCT SPECIFICATIONS

FDA #: 15910499580

Micro Analysis

PARAMETER	UNIT OF MEASURE	STANDARD	MEAN RESULT
Aerobic Plate Count	cfu/g	< 10,000	Conforms
Coliforms	cfu/g	0	Not Detected
E. Coli Count Plate	cfu/g	0	Not Detected
Yeast & Mold	cfu/g	< 1	Not Detected
Salmonella	BAM /25g	Negative	Negative
Coag Positive Staph Aure	cfu/g	0	Not Detected
Heavy Metal	ICP-MS		Conforms
Arsenic	ppm	Report Only	Not Detected
Cadmium	ppm	Report Only	Not Detected
Lead	ppm	Report Only	Not Detected
Mercury	ppm	Report Only	Not Detected

Cannabinoid Profile / % by volume / volume per bottle

Component	%	mg
CBD	3.50	997.5
CBG	0.31	88.35
CBN	0.30	85.5
CBC	<LOQ	
D9THC	0.04	11.4
Total Cannabinoids	4.15	1182.75

N/D = Below Detectable Threshold, N/T = Not Tested, <LOQ = Below Level of Quantification

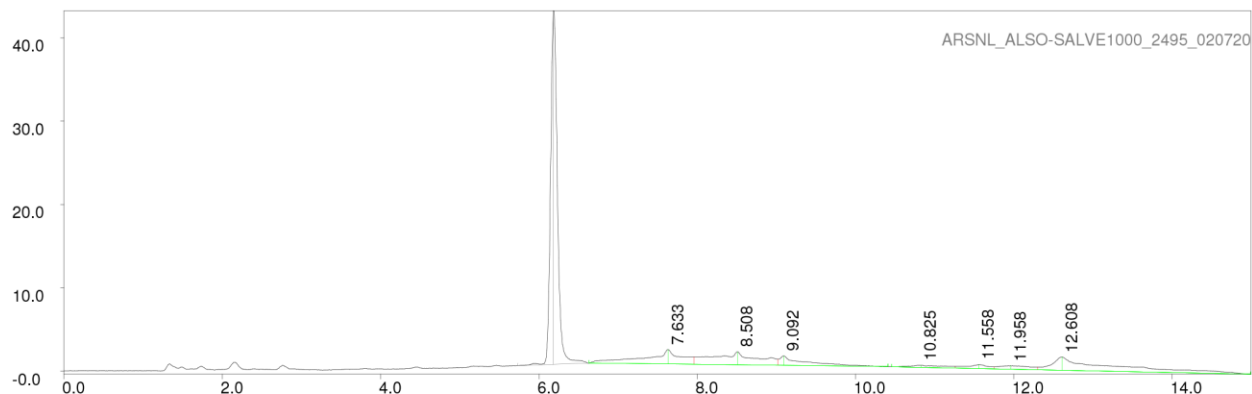


CERTIFICATE OF ANALYSIS WITH PRODUCT SPECIFICATIONS

FDA #: 15910499580

Chromatograph

PAGE 1 LP-chrom 2.10 2018-Dec-16 12:28:08



```

Program: LP-chrom 2.10 2018-Dec-16 12:28:08
Running under: Windows NT 6.1 (build 7601, Service Pack 1)
Plot: C:\lp chrom\data\ARSNL_ALSO-SALVE1000_2495_020720
Exported: 02/08/20 14:18:59.082
Program: LP-chrom 2.10 2018-Dec-16 12:28:08
System: Windows NT 6.1 (build 7601, Service Pack 1)
Chromatograph using method:
from file: cannabinoids
Analytical pump method (max flow = 10 [ml/min])
TIME FLOW %A %B
0.0 0.700 30 70
0.5 0.700 30 70
6.0 0.700 5 95
12.0 0.700 5 95
12.1 0.700 30 70
15.0 0.700 30 70
  
```

```

Autozero before rec
Detector Beckman 166 DET/3 on serial port:COM28
Det:A, wavelen 280 nm
  
```

Pump A: Beckman 126 PUMP/2 on serial port:COM28

peak num	retention time [min]	area [mVolt*min]	area percent [%]	height [mVolt]	begin [min]	end [min]	max Y [mVolt]	type (S)ngle (R)+(L)
1	6.18333	4.24144	50.89516	42.42700	5.73333	6.63333	43.26675	S
2	7.63333	0.89541	10.74442	1.71175	6.63333	7.95833	2.60016	R+
3	8.50833	0.97737	11.72789	1.55701	7.95833	9.01667	2.34620	R+L
4	9.09167	0.41046	4.92533	1.13366	9.01667	10.40833	1.85670	+L
5	10.82500	0.12599	1.51187	0.24686	10.45833	11.25833	0.72768	R+
6	11.55833	0.14746	1.76943	0.48049	11.25833	11.75000	0.81847	R+L
7	11.95833	0.19020	2.28225	0.40663	11.75000	12.30000	0.66671	R+L
8	12.60833	1.34536	16.14365	1.59339	12.30000	14.99167	1.72686	+L

Sum area: 8.33368

Peaks accepted: 8 (excluded: 7 total: 15)