



100X OUTDOOR



The Sport 100X Table Tennis Table from Cornilleau is the ideal table for your first table tennis volleys, and is designed for outdoor family leisure use. It is affordable, easy to move and features bat and ball storage for convenience.

- 100% Weatherproof 4mm Table Top
- Lightweight and Foldable
- Oversized Double Wheels
- Adjustable Feet
- Bat and Ball Storage
- Made in France
- 10 Year Warranty



Table Assembly:

The table comes flat packed and requires full assembly.

Table Top Colour	Grey
Table Top Thickness	4 mm laminate
Finish	SOFTMAT
Frame Height / Material	40 mm / Aluzinc®
Locking	Push'n Lock (8 points)
Foot (Type / Dimensions)	Straight / diam. 25 mm
Adjustment Pad (Type / Dimensions)	1D / diam. 50 mm
Net Type	Fixed
Net Adjustment	Manual
Brakes	No
Ball Storage / Number Of Balls	Yes / 4 balls
Bat Storage / Number Of Bats	Yes / 2 bats
Protective Corners	No
Other Equipment	No
Table Weight Only	47 kg
Weight Packed Table	56 kg



200X OUTDOOR



The 200X Outdoor Table from Cornilleau features a 5mm playing top making it perfect for tournaments outdoors with family and friends., It has height-adjustable legs and powerful brakes to ensure its stability, even in gardens with uneven ground. With its large wheels, it can be moved easily.

- 100% Weatherproof 5mm Table Top
- Lightweight and Foldable
- Oversized Double Wheels with Brakes
- Adjustable Swivel Feet
- Bat and Ball Storage
- Made in France
- 10 Year Warranty



Table Top Colour	Grey
Table Top Thickness	Laminate 5 mm
Finish	SOFTMAT
Frame Height / Material	40 mm / Aluzinc®
Locking	Push'n Lock (8 points)
Foot (Type / Dimensions)	Straight / diam. 38 mm
Adjustment Pad (Type / Dimensions)	3D / diam. 104 mm
Net Type	Fixed
Net Adjustment	Manual
Brakes	2
Ball Storage / Number Of Balls	Yes / 4 balls
Bat Storage / Number Of Bats	Yes / 2 bats
Protective Corners	No
Other Equipment	No
Table Weight Only	54 kg
Weight Packed Table	63 kg

Table Assembly:

The table comes flat packed and requires full assembly.



300X OUTDOOR



The Sport 300X Outdoor Table Tennis Table offers great value for money with features like DSI safety folding system and the in-built ball storage compartment. The table top offers a good quality rebound, which will delight players of all levels.

- 100% Weatherproof 5mm Table Top
- 50mm Frame to Keep the Top Straight
- Oversized Double Wheels with Brakes
- DSI Safety Folding System
- Point Counters
- Folding Net with Adjustable Tension
- Adjustable Swivel Feet
- Bat and Ball Storage
- Made in France
- 10 Year Warranty



Table Top Colour	Grey
Table Top Thickness	Laminate 5 mm
Finish	SOFTMAT
Frame Height / Material	50 mm / Aluzinc®
Locking	CIO (16 points)
Foot (Type / Dimensions)	Straight / diam. 38 mm
Adjustment Pad (Type / Dimensions)	3D adjustable / diam. 104 mm
Net Type	Folding
Net Adjustment	Manual
Brakes	2
Ball Storage / Number Of Balls	Yes / 4 balls
Bat Storage / Number Of Bats	Yes / 2 bats
Protective Corners	No
Other Equipment	2 point counters
Table Weight Only	56 kg
Weight Packed Table	66 kg

Table Assembly:

The table comes flat packed and requires full assembly.



400X OUTDOOR

.....

Its height-adjustable feet and large wheels make it an all-terrain table. Its point counters will be conducive to frenzied games and its locations for storing rackets and balls will prove to be very practical. With its locking / unlocking system combining optimal ergonomics and safety as well as its solid brakes, the whole family can handle it without danger.

- 100% Weatherproof 5mm Table Top
- 50mm Frame to Keep the Top Straight
- Oversized Double Wheels with Brakes
- DSI Safety Folding System
- Point Counters
- Folding Net with Adjustable Tension
- Adjustable Swivel Feet
- Bat and Ball Storage
- Made in France
- 10 Year Warranty

.....

Table Assembly:

The table comes flat packed and requires full assembly.



Table Top Colour	Grey
Table Top Thickness	Laminate 5 mm
Finish	SOFTMAT
Frame Height / Material	50 mm / Aluzinc®
Locking	CIO (16 points)
Foot (Type / Dimensions)	Tapered / 110 ~ 65 - 65mm
Adjustment Pad (Type / Dimensions)	3D adjustable / diam. 104 mm
Net Type	Folding
Net Adjustment	Manual
Brakes	2
Ball Storage / Number Of Balls	Yes / 4 balls
Bat Storage / Number Of Bats	Yes / 4 bats
Protective Corners	No
Other Equipment	2 point counters
Table Weight Only	58 kg
Weight Packed Table	68 kg



500X OUTDOOR

The 500X ping pong table can resist all variations in weather. But this isn't its only advantage: its 6mm panel has a MATTOP antiglare coating. With an excellent rebound, the first spin you'll give to your ball will be perfectly transmitted.

- 100% Weatherproof 6mm Table Top
- 50mm Frame to Keep the Top Straight
- Corner Protection
- Oversized Double Wheels with Brakes
- DSI Safety Folding System
- Point Counters
- Automatic Net Adjustment in Height and Tension
- Adjustable Swivel Feet
- Bat, Ball and Item Storage
- Made in France
- 10 Year Warranty



Table Top Colour	Black
Table Top Thickness	6 mm laminate
Finish	MATTOP
Frame Height / Material	50 mm / Aluzinc®
Locking	CIO (16 points)
Foot (Type / Dimensions)	Tapered / 110 ~ 65 - 65mm
Adjustment Pad (Type / Dimensions)	3D adjustable / diam. 104 mm
Net Type	Retractable
Net Adjustment	Tension + Height
Brakes	2
Ball Storage / Number Of Balls	Yes / 6 balls
Bat Storage / Number Of Bats	Yes / 4 bats
Protective Corners	Yes
Other Equipment	2 point counters 2 empty pockets
Table Weight Only	66 kg
Weight Packed Table	78 kg

Table Assembly:

The table comes flat packed and requires full assembly.



600X OUTDOOR

Pockets, cup holders, point counters, dispensers and ball storage, the 600X benefits from the best of innovations without compromising on the fundamentals: safety, ergonomics and comfort of use.

- 100% Weatherproof 7mm Table Top
- XL Frame to Keep the Top Straight
- Corner Protection
- Oversized Double Wheels with Brakes
- DSI Safety Folding System
- Point Counters
- Automatic Net Adjustment in Height and Tension
- Adjustable Swivel Feet
- Bat, Ball and Item Storage, Plus Ball Dispenser
- Cup Holders
- Made in France
- 10 Year Warranty



Table Top Colour	Black
Table Top Thickness	Laminate 7 mm
Finish	MATTOP
Frame Height / Material	60 mm / Aluzinc®
Locking	CIO (16 points)
Foot (Type / Dimensions)	Tapered / 120 ~ 80 - 80 mm
Adjustment Pad (Type / Dimensions)	3D adjustable / diam. 104 mm
Net Type	Retractable
Net Adjustment	Tension + Height
Brakes	2
Ball Storage / Number Of Balls	Yes / 6 balls
Bat Storage / Number Of Bats	Yes / 4 bats
Protective Corners	Yes
Other Equipment	"2 point counters 2 empty pockets 2 cup holders 2 ball dispensers 1 crossing handle"
Table Weight Only	77 kg
Weight Packed Table	90 kg

Table Assembly:

The table comes flat packed and requires full assembly.



700X OUTDOOR

Its bounce quality equivalent to a competition table will invite you to surpass yourself. Add to that the best technologies, which offer coziness and comfort. You will transform a simple game of ping pong into a real experience.

- 100% Weatherproof 7mm Table Top
- XL Frame to Keep the Top Straight
- Corner Protection
- Oversized Double Wheels with Brakes
- DSI Safety Folding System
- Point Counters
- Automatic Net Adjustment in Height and Tension
- Adjustable Swivel Feet
- Bat, Ball and Item Storage, Plus Ball Dispenser
- Cup Holders
- Made in France
- 10 Year Warranty

Table Assembly:

The table comes flat packed and requires full assembly.

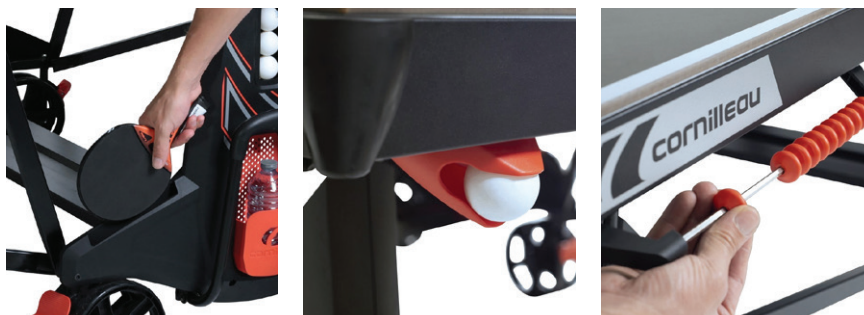
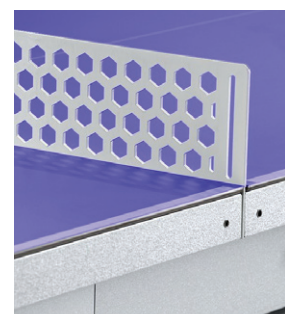


Table Top Colour	Black
Table Top Thickness	8 mm laminate
Finish	MATTOP
Frame Height / Material	60 mm / Aluzinc® painted black
Locking	CIO (16 points)
Foot (Type / Dimensions)	Tapered / 120-80 - 80 mm painted black
Adjustment Pad (Type / Dimensions)	3D adjustable / diam. 104 mm
Net Type	Retractable
Net Adjustment	Tension + Height
Brakes	4
Ball Storage / Number Of Balls	Yes / 6 balls
Bat Storage / Number Of Bats	Yes / 4 bats
Protective Corners	Yes
Other Equipment	"2 point counters 2 empty pockets 2 cup holders 2 ball dispensers 1 crossing handle"
Table Weight Only	89 kg
Weight Packed Table	102 kg



PRO 510 OUTDOOR



- 100% Weatherproof 7mm Table Top
- Fixed Steel Net and Steel Base
- Corner Protection
- Ball Dispensers and Bat Storage
- Made in France
- 10 Year Warranty

Table Assembly:

The table comes flat packed and requires full assembly.

Table Top Colour	Blue or Grey
Table Top Thickness	7mm laminate
Finish	MATTOP
Frame Height / Material	60 mm / Aluzinc® Outdoor
Locking	N/A
Foot (Type / Dimensions)	Floor fixing / Steel curve
Adjustment Pad (Type / Dimensions)	
Net Type	Permanent
Net Adjustment	Fixed
Brakes	N/A
Ball Storage / Number Of Balls	No
Bat Storage / Number Of Bats	Yes / 4
Protective Corners	No
Other Equipment	2 Ball dispensers
Table Weight Only	77 kg
Weight Packed Table	97 kg



PRO PARK OUTDOOR

The Pro Park is superior in all areas compared to any steel or concrete tables. Although it is referred to as a permanent table, it can still be taken apart and relocated if required. No single part weighs more than 46kg, making transportation of this table a breeze compared to the steel/concrete tables, which can weigh more than 1000 kg.

- 100% Weatherproof 9mm Table Top
- Shock, Fire and Grafitti Proof
- Easily Fixes to the Ground
- Corner Protection
- Made in France
- 10 Year Warranty

Table Assembly:

The table comes flat packed and requires full assembly.

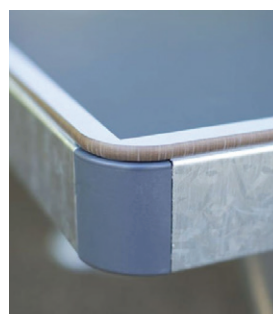
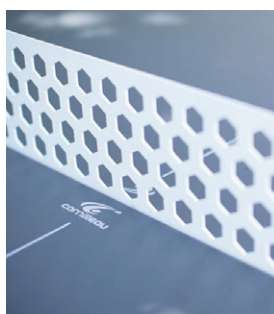


Table Top Colour	Grey
Table Top Thickness	9mm laminate
Finish	MATTOP
Frame Height / Material	80 mm / Hot-dip galvanized steel
Locking	N/A
Foot (Type / Dimensions)	Hot-dip galvanized steel / 90mm
Adjustment Pad (Type / Dimensions)	
Net Type	Permanent
Net Adjustment	Fixed
Brakes	N/A
Ball Storage / Number Of Balls	No
Bat Storage / Number Of Bats	No
Protective Corners	No
Other Equipment	
Table Weight Only	162 kg
Weight Packed Table	282 kg

STIGA®

SPORT ROLLER INDOOR



A quality entry-level table for family fun at an affordable price, from world renowned table tennis brand STIGA. The STIGA Sport Roller features quick and easy assembly.

Please note that the net and post set is not included and sold separately.

- 95% Pre-assembled in Box
- 12mm Playing Top
- Playback Mode
- Foldable Compact Design
- Wheels with Brakes
- 2 Year Warranty

Table Assembly:

95% Pre-assembled in box.

Table Top Colour	Blue
Table Top Thickness	12mm MDF
Frame height	25mm
Leg	30mm x 30mm
Locking	Slide Pin
Wheels (size & material)	50mm
Foot (type / dimensions)	Adjustable
Brakes	Yes
Country Manufacture	China
Table weight only	62kg
Weight packed table	65kg

STIGA®

ENDURE ROLLER INDOOR

- 95% Pre-assembled in Box
- 16mm Playing Top
- Playback Mode
- Foldable Compact Design
- Wheels with Brakes
- 2 Year Warranty

Please note that the net and post set is not included and sold separately.

Table Assembly:

95% Pre-assembled in box.



Table Top Colour	Blue
Table Top Thickness	16mm MDF
Frame height	30mm
Leg	35mm x 35mm
Locking	Clip Lock
Wheels (size & material)	50mm
Foot (type / dimensions)	Adjustable
Brakes	Yes
Country Manufacture	China
Table weight only	65kg
Weight packed table	71kg



ULTIMA ROLLER INDOOR

- 95% Pre-assembled in Box
- 18mm Playing Top
- Playback Mode
- Foldable Compact Design
- Wheels with Brakes
- 2 Year Warranty

Please note that the net and post set is not included and sold separately.



Table Assembly:

The Ultima Roller is almost fully pre-assembled in the box.

Table Top Colour	Blue
Table Top Thickness	18mm MDF
Frame height	40mm
Leg	30mm x 50mm
Locking	Clip Lock
Wheels (size & material)	75mm
Foot (type / dimensions)	Adjustable
Brakes	Yes
Country Manufacture	China
Table weight only	90kg
Weight packed table	96kg

TIGA®

PREMIUM ROLLER INDOOR

Officially recognised and able to be used in any State, National and International Ping Pong Event. It has solid steel legs, strong trimming under the surface and a classy looking bright blue and yellow colour scheme. With normal wear and tear, and if looked after properly, this table will last you for decades.

Please note that the net and post set is not included and sold separately.

- ITTF tournament approved
- 25mm playing top
- Durable frame
- Oversized wheels with brakes
- 2 Year Warranty

Table Assembly:

Some assembly required.



Table Top Colour	Dark Blue
Table Top Thickness	25mm MDF
Frame height	50mm
Leg	50mm x 50mm
Locking	Clip lock
Wheels (size & material)	100mm
Foot (type / dimensions)	Adjustable
Brakes	Yes
Country Manufacture	China
Table weight only	120kg
Weight packed table	124kg

STIGA®

EXPERT ROLLER INDOOR



.....

Fan favourite of more than 90% of Australia's professional Table Tennis Clubs. Although primarily a Ping Pong Table used in Clubs, the table is becoming more popular in homes amongst Table Tennis connoisseurs.

Please note that the net and post set is not included and sold separately.

- ITTF tournament approved
- 25mm playing top with matte finish
- Durable frame
- Oversized wheels with brakes
- 2 Year Warranty

.....

Table Assembly:

Some assembly required.

Table Top Colour	Dark Blue
Table Top Thickness	25mm MDF
Frame height	60mm
Leg	30mm x 30mm
Locking	Locking Bat
Wheels (size & material)	100mm
Foot (type / dimensions)	Adjustable
Brakes	Yes
Country Manufacture	Germany
Table weight only	102kg
Weight packed table	113kg

STIGA®

OPTIMUM 30 ROLLER INDOOR

The Optimum 30 ping pong table from STIGA, also known as the “King of Table Tennis Tables”, was the first Table Tennis Table in the World with a 30mm thick playing surface.

Please note that the net and post set is not included and sold separately.

- ITTF tournament approved
- 30mm playing top
- Durable frame
- Oversized wheels with brakes
- 2 Year Warranty



Table Assembly:

Some assembly required.

Table Top Colour	Dark Blue
Table Top Thickness	30mm MDF
Frame height	60mm
Leg	50mm x 50mm
Locking	Locking Bar
Wheels (size & material)	100mm
Foot (type / dimensions)	Adjustable
Brakes	Yes
Country Manufacture	Germany
Table weight only	126kg
Weight packed table	137kg



SUMMIT
Best In Game.

MESA T-120 INDOOR

The SUMMIT Mesa T-120 is a high quality entry-level table for family fun at an affordable price. The table is 95% pre-assembled in the box, so you could be hitting your first balls within 15 min.

Please note that the net and post set is not included and sold separately.

- 12mm Table Top
- Playback Mode
- Foldable Compact Design
- Wheels with Brakes
- 2 Year Warranty



Table Assembly:

95% Pre-assembled in box.

Table Top Colour	Blue
Table Top Thickness	12mm MDF
Frame height	25mm
Leg	30mm x 30mm
Locking	Slide Pin
Wheels (size & material)	50mm
Foot (type / dimensions)	Adjustable
Brakes	Yes
Country Manufacture	China
Table weight only	62kg
Weight packed table	65kg



SUMMIT
Best In Game.

COMPACTO T-160 INDOOR

.....

This Indoor Ping Pong Table comes in 2 separate halves, with a pair of wheels under the middle of the table when it is set-up. When packing up just tilt forward and lean against a wall or post. Store face-to-face. There are 2 joining latches under the table to keep the table together when set-up.

Please note that the net and post set is not included and sold separately.

- 16mm Table Top
 - Playback Mode
 - Foldable Compact Design
 - Wheels with Brakes
 - 2 Year Warranty
-

Table Assembly:

95% Pre-assembled in box.



Table Top Colour	Blue
Table Top Thickness	16mm MDF
Frame height	30mm
Leg	30mm x 30mm
Locking	N/A
Wheels (size & material)	N/A
Foot (type / dimensions)	Adjustable
Brakes	N/A
Country Manufacture	China
Table weight only	71kg
Weight packed table	75kg



SUMMIT
Best In Game.

MELIA T-160 INDOOR

The SUMMIT Melia T-160 is a durable table with 30mm x 30mm legs making it a robust option for the family home. Plus, it comes 95% assembled in the box, so you open up and get your game started in no time.

Please note that the net and post set is not included and sold separately.

- 16mm Table Top
- Playback Mode
- Foldable Compact Design
- Wheels with Brakes
- 2 Year Warranty



Table Top Colour	Blue
Table Top Thickness	16mm MDF
Frame height	25mm
Leg	30mm x 30mm
Locking	Slide Pin
Wheels (size & material)	50mm
Foot (type / dimensions)	Adjustable
Brakes	Yes
Country Manufacture	China
Table weight only	62kg
Weight packed table	65kg

Table Assembly:

95% Pre-assembled in box.



SUMMIT
Best In Game.

EURO T-160 INDOOR

The SUMMIT Euro T-160 is a very strong table tennis table with 35mm thick legs and a 30mm frame. It is perfect for schools and institutions for this reason. Plus, it comes 95% assembled in the box, so you open up and get your game started in no time.

Please note that the net and post set is not included and sold separately.

- 16mm Table Top
- Playback Mode
- Thicker Legs for Durability
- Foldable Compact Design
- Wheels with Brakes
- 2 Year Warranty

Table Assembly:

95% Pre-assembled in box.



Table Top Colour	Blue
Table Top Thickness	16mm MDF
Frame height	30mm
Leg	35mm x 35mm
Locking	Clip Lock
Wheels (size & material)	50mm
Foot (type / dimensions)	Adjustable
Brakes	Yes
Country Manufacture	China
Table weight only	65kg
Weight packed table	71kg



SUMMIT
Best In Game.

PLATINO T-160 INDOOR

The Platino table is a fusion of style, quality and attention-to-detail. The unique black-on-black color scheme adds jaw-dropping style to any room. It's beauty combined with it's quality table top and extra features of bat and ball storage, make it a remarkable one-of-a-kind table.

Please note that the net and post set is not included and sold separately.

- 16mm Table Top
- Playback Mode
- Bat and Ball Storage
- Foldable Compact Design
- Wheels with Brakes
- 2 Year Warranty

Table Assembly:

95% Pre-assembled in box.



Table Top Colour	Black
Table Top Thickness	16mm MDF
Frame height	50mm
Leg	30mm x 50mm
Locking	Clip Lock
Wheels (size & material)	75mm
Foot (type / dimensions)	Adjustable
Brakes	Yes
Country Manufacture	China
Table weight only	80kg
Weight packed table	85kg



SUMMIT
Best In Game.

PRO T-250 INDOOR

TTA Approved Indoor Table Tennis Table. The best affordable high-end table tennis table that is suitable for club and tournament play within the range.

Please note that the net and post set is not included and sold separately.

- 25mm Table Top
- TTA Approved
- Playback Mode
- Thicker Legs for Durability
- Foldable Compact Design
- Wheels with Brakes
- 2 Year Warranty



Table Assembly:

Some assembly required.

Table Top Colour	Dark Blue
Table Top Thickness	25mm MDF
Frame height	50mm
Leg	50mm x 50mm
Locking	Clip lock
Wheels (size & material)	100mm
Foot (type / dimensions)	Adjustable
Brakes	Yes
Country Manufacture	China
Table weight only	120kg
Weight packed table	124kg



100 SPORT INDOOR

.....

This is the perfect indoor family ping pong table. The Sport 100 from Cornilleau is an entry level table for all ages and skill levels. The European made 19mm High Density MDF playing surface offers an excellent bounce, so you can play like a pro.

- Quality 19mm Playing Top
- Oversized Wheels
- Stabilizer Feet
- Net and Post Included
- Made in France
- 3 Year Warranty

.....

Table Assembly:

The table comes flat packed and requires full assembly.



Table Top Colour	Blue
Table Top Thickness	19mm Chipboard
Finish	
Frame height / Material	30 mm / Aluzinc®
Locking	Push'n Lock (8 points)
Foot (type / dimensions)	Low
Adjustment pad (type / dimensions)	diam. 50 mm
Net type	Fixed
Net adjustment	Manual
Wheels	Twin, notched, single-piece wheel 150mm x 20mm
Brakes	No
Ball storage / number of balls	No
Bat storage / number of bats	No
Table weight only	68 kg
Weight packed table	79 kg



250 SPORT INDOOR

This is the perfect indoor family ping pong table. The Sport 100 from Cornilleau is an entry level table for all ages and skill levels. The European made 19mm High Density MDF playing surface offers an excellent bounce, so you can play like a pro.

- Quality 19mm Playing Top
- Oversized Wheels
- Stabilizer Feet
- DSI Safety Folding System
- Ball Storage
- Net and Post Included
- Made in France
- 3 Year Warranty

Table Assembly:

The table comes flat packed and requires full assembly.



Table Top Colour	Blue
Table Top Thickness	19mm Chipboard
Finish	
Frame height / Material	30 mm / Aluzinc®
Locking	CIO (16 Points)
Foot (type / dimensions)	Straight with cover 3/4 / 115mm x 28mm
Adjustment pad (type / dimensions)	diam. 70 mm
Net type	Folding
Net adjustment	Manual
Wheels	Indoor special paired with bandage 150mm x 30mm
Brakes	2
Ball storage / number of balls	Yes / 6 balls
Bat storage / number of bats	No
Table weight only	74 kg
Weight packed table	84 kg



540 COMPETITION INDOOR

Featuring a SKILTOP coating, a patented DSI locking system, and the COMPACT TECHNOLOGY storage system. Concentration, determination and application are the keywords for the COMPETITION 540 INDOOR table tennis table.

- 22mm Tournament Approved Playing Top
- Oversized Wheels with Brakes
- Stabilizer Feet
- DSI Safety Folding System
- Ball Storage
- Net and Post Included
- Made in France
- 3 Year Warranty

Table Assembly:

The table comes flat packed and requires full assembly.



Table Top Colour	Blue
Table Top Thickness	22mm Chipboard
Finish	SKILTOP
Frame height / Material	50 mm / Steel
Locking	CIO (16 points)
Foot (type / dimensions)	Steel / 60mm x 40mm
Adjustment pad (type / dimensions)	diam. 70mm
Net type	Permanent and retractable
Net adjustment	Tension and height
Wheels	Indoor special paired with bandage 150mm x 30mm
Brakes	4
Ball storage / number of balls	No
Bat storage / number of bats	No
Table weight only	97kg
Weight packed table	111kg



740 COMPETITION INDOOR



Approved by the ITTF, this table, considered as the highest range product on the market, has already responded to the demands of prestigious competitions such as the French and European championships.

- 25mm Tournament Approved Playing Top
- Oversized Wheels with Brakes
- Stabilizer Feet
- DSI Safety Folding System
- Ball Storage
- Net and Post Included
- Made in France
- 3 Year Warranty



Table Top Colour	Blue
Table Top Thickness	25mm Chipboard
Finish	SKILTOP
Frame height / Material	70 mm / Steel
Locking	CIO (16 points)
Foot (type / dimensions)	Steel / 60mm x 40mm
Adjustment pad (type / dimensions)	diam. 135mm
Net type	Permanent and retractable
Net adjustment	Tension and height
Wheels	Indoor special with ball bearings 125mm x 35mm
Brakes	4
Ball storage / number of balls	No
Bat storage / number of bats	No
Table weight only	119Kg
Weight packed table	136Kg

Table Assembly:

The table comes flat packed and requires full assembly.



850 COMPETITION INDOOR

Contemporary by definition, this table rewrites the codes with its grey indoor playing top and its retractable net posts. These two ITTF approved innovations are completely new in the world of competition.

- Wood Design
- 25mm ITTF Approved Grey Table Top
- DSI Safety Folding System
- Retractable Permanent Posts
- Oversized Wheels with Brakes
- Stabilizer Feet
- Made in France
- 3 Year Warranty

Table Assembly:

The table comes flat packed and requires full assembly.



Table Top Colour	Grey
Table Top Thickness	25mm Chipboard
Finish	SKILTOP P-BALL READY
Frame height / Material	70 mm / Wood (inclined to player side)
Locking	CIO (16 points)
Foot (type / dimensions)	Wood / 120mm x 60mm
Adjustment pad (type / dimensions)	diam. 140mm
Net type	Permanent and Retractable
Net adjustment	Tension and Height
Wheels	Indoor special with ball bearings 125mm x 35mm
Brakes	4
Ball storage / number of balls	No
Bat storage / number of bats	No
Table weight only	122kg
Weight packed table	140kg