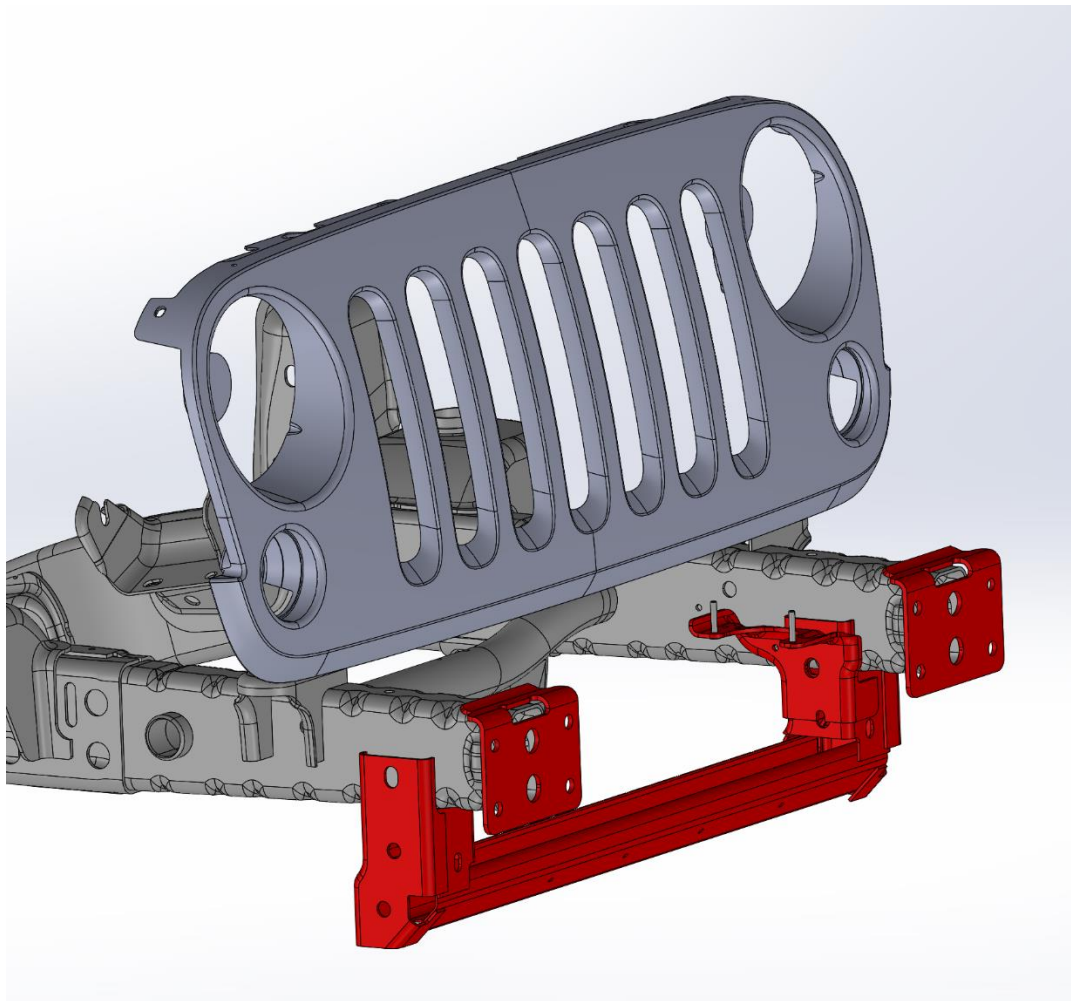


HIGH Clearance Frame Chop Front Bumper

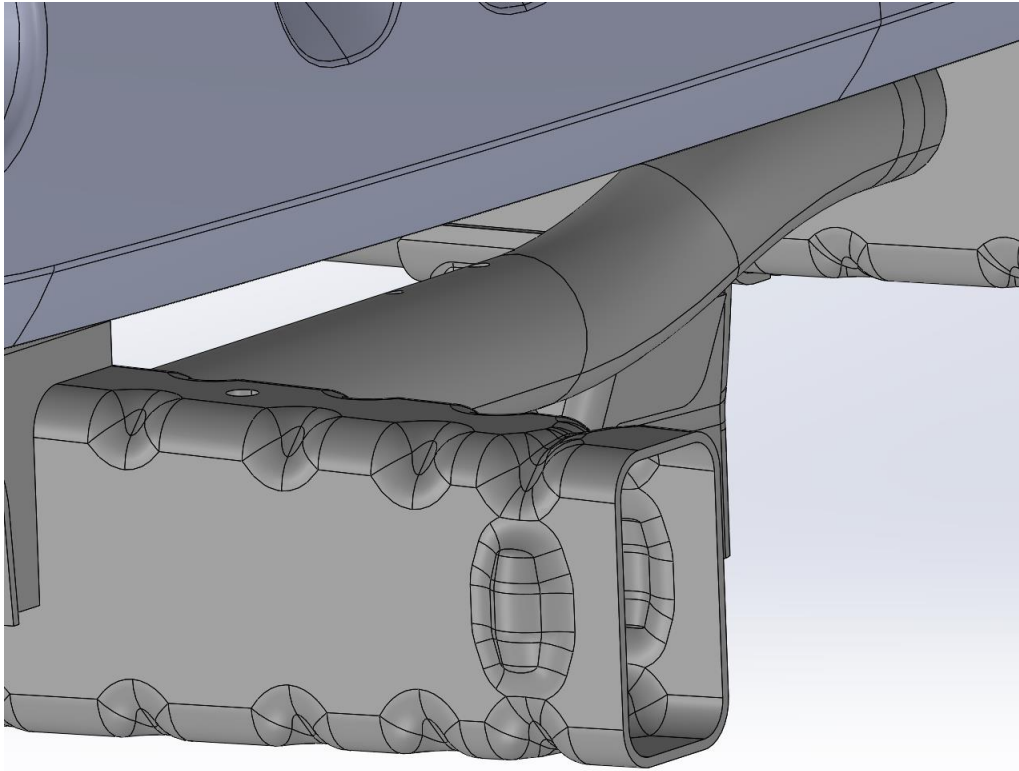
Step 1: remove factory bumper, lower cover piece and plastic piece between grill and frame

Step 2: Using a cutting wheel remove all pieces of the frame marked in red. Use a flap wheel to clean up and smooth all the remaining metal components. Try not to cut into the frame rails as much as possible in this process.



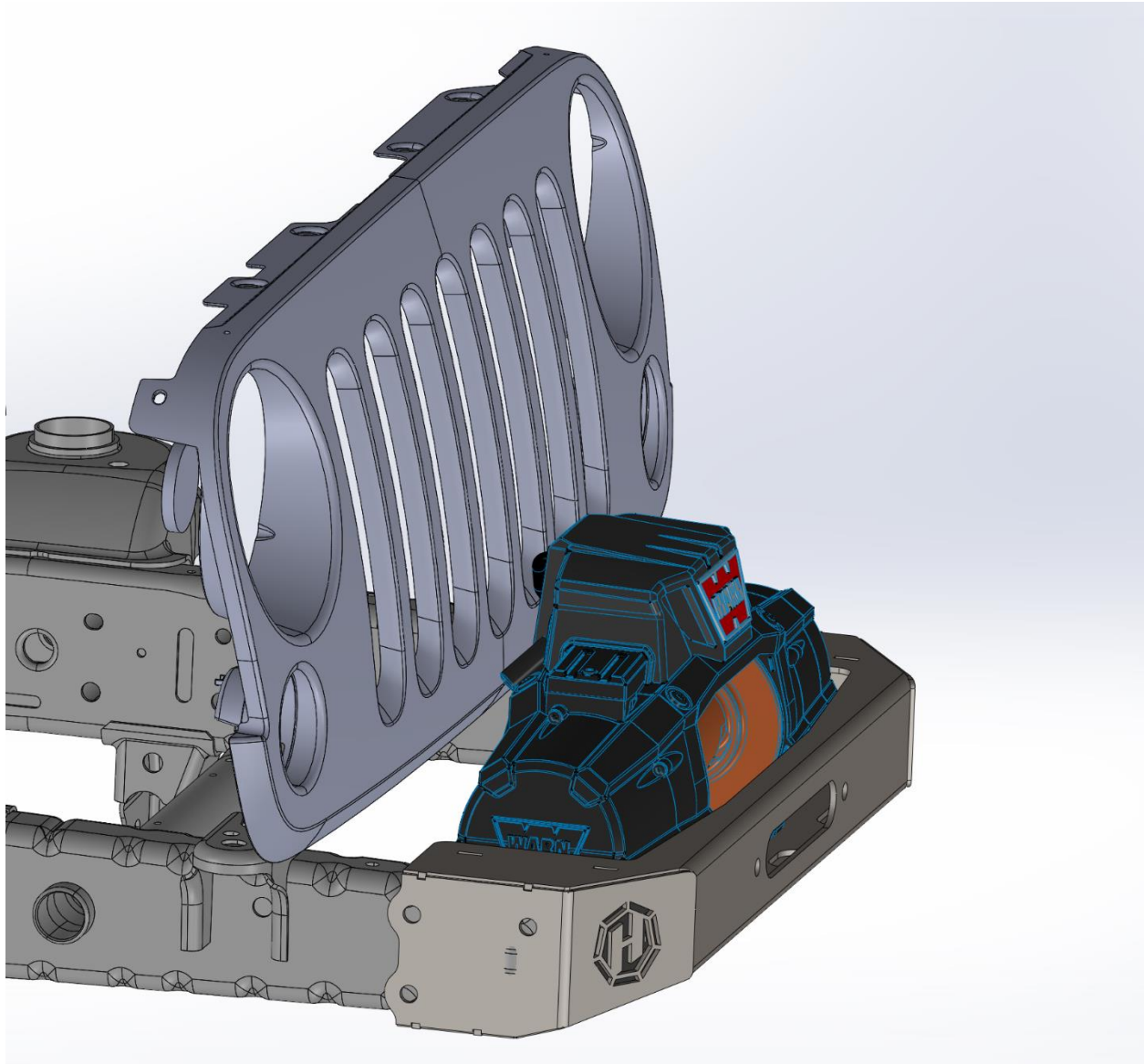
Step 3: On the JK frame there is a outward facing dimple on each side of the frame. You want to grind those down to flush on the frame and it will leave a hole in its place, but it will not

effect the strength of how the bumper is attached.



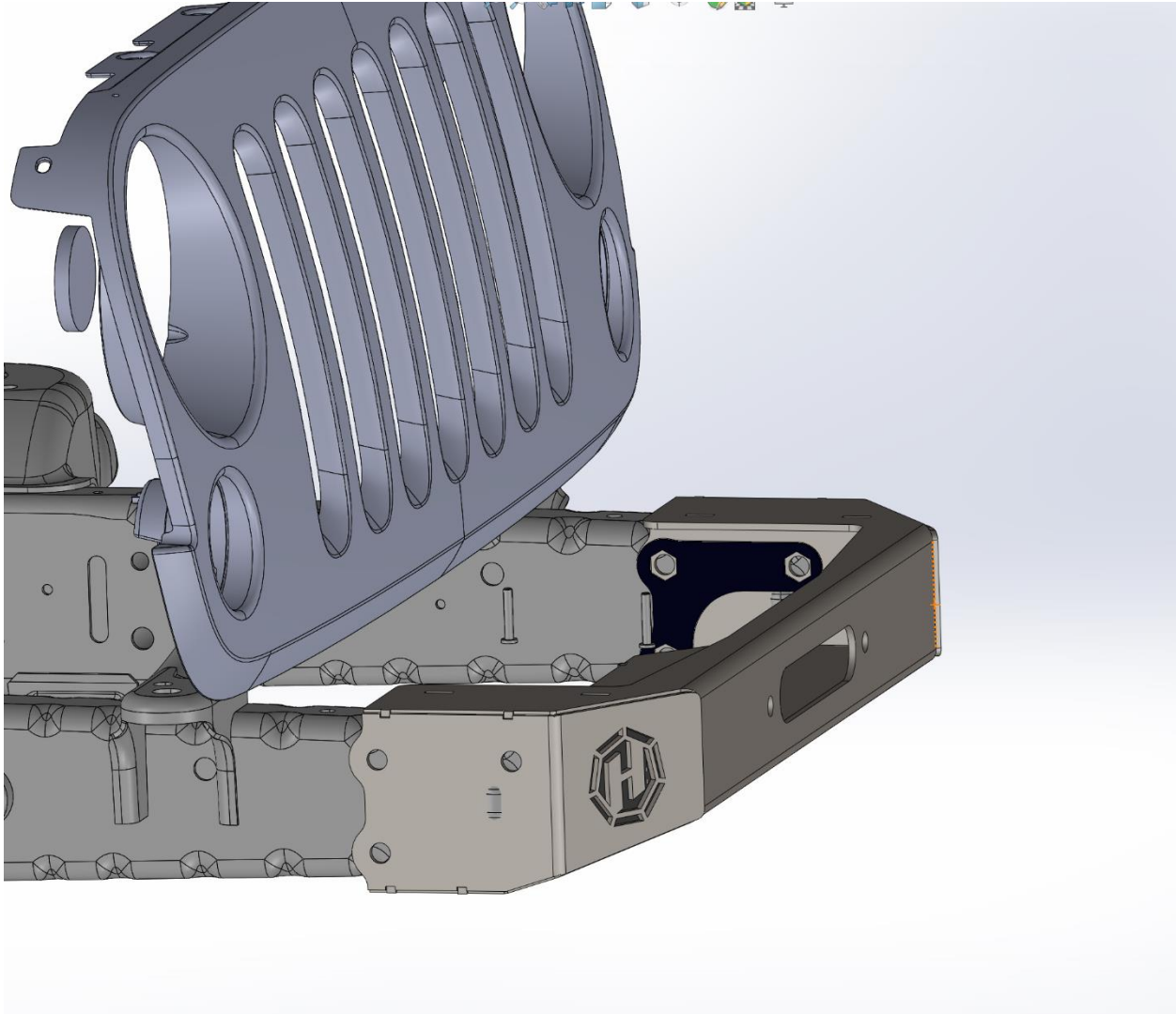
Step 4: Place the winch inside of the bumper and bolt it in place with at least 2 bolts. You will then slide the bumper and winch into place and push it onto the frame rail as far back as possible. Once it is in that position, measure the closest point on the grill and the closest point to the winch and determine how far back you want it to slide, and cut off the frame. (example If its 2" it can move back before the winch would touch the grill, only cut 1.5" and

re check)



Step 5: Remove the winch and Using the bumper as a drill guide, you can drill one hole in the top rear position on each side and slide a bolt through each to make sure that the bumper does not move in the process and cause the holes to not line up. I drill the hole from the

outside, and then drill the inside hole from the inside of the bumper.



Step 6: once the holes have been drilled, and you have verified the hardware will go through all the holes, remove the bumper, and paint all the exposed metal. You can then permanently install the winch onto the bumper.

Step 7: Slide bumper back on and torque hardware to 80ftlbs.

Dang, your jeep looks good.