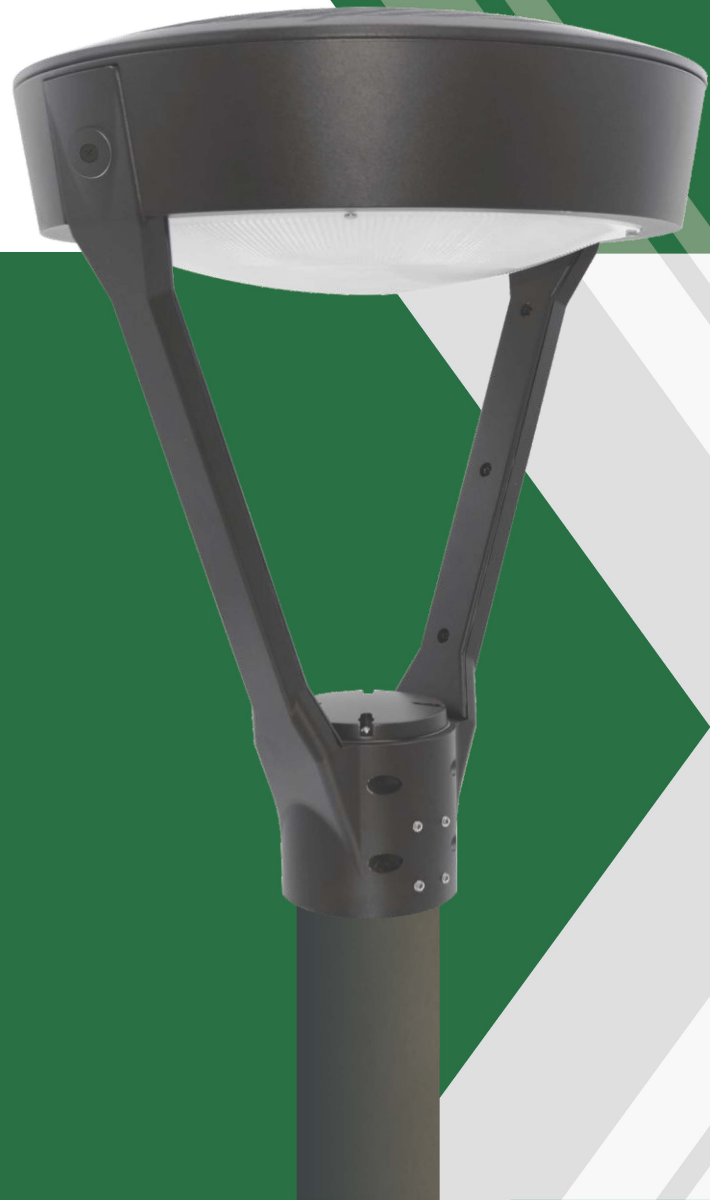




LED Post Top Light

Wattage / CCT Selectable



LED Post Top Light

Product Description:

Corrosion resistant heavy duty-duty-cast aluminum

Cooling channels allow vertical airflow



FAO controller allows for different CCTs and wattages to choose from.



Photocell



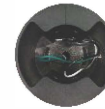
Optional Mount

Standard 3" open on the bottom with 2 3/8" sleeve

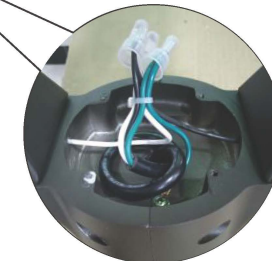
UV polycarbonate Optic Lens



Optional 180° Shield with adder



Standard 10KV Surge



Wiring Compartment on the Top for easy access and ease of installation.



Photocontrol



480V Max Receptacle



Product Description:

This post top provides a subtle but stylish look for any job site. It is designed to save energy and reduce installation time. Optional photocontrol options allow for additional energy savings.

This post top is perfect for your architectural street lighting needs.

Features:

LISTING

►UL and CUL listed for WET LOCATIONS.

HOUSING

►Corrosion resistant heavy duty-duty-cast aluminum construction. Standard 3" open on the bottom. Pass 3 G vibration testing.

►Wiring Compartment on the Top for easy access and ease of installation.

FINISH

►Superior powder coat finish to withstand the toughest weather.

►Standard bronze with color options.

OPTIONS

►Optional 480V with adder

►Optional 180° Shield with adder

APPLICATIONS

	Street & Tunnel
	Park
	Gas Station
	Parking
	Industrial Site



* Different LED Kelvin temperature available with 4-6 week lead time. Please call for a quote.

** DISCLAIMER: This test report was produced in accordance with IES LM-79 photometric testing protocol for luminaires, using a single representative test fixture. Actual production units may vary from the values reported here by up to ±10%.

Performance Data

Model NO.	Nominal Watts	Lumen*	Efficacy*
NHL-SD	45 / 60 / 80W	10327lm*	126.8 lm/w*
	100 / 125 / 160W	20039lm*	126.7 lm/w*
*Lumen and Efficacy are based on the highest wattage at 5000K			

Specification:

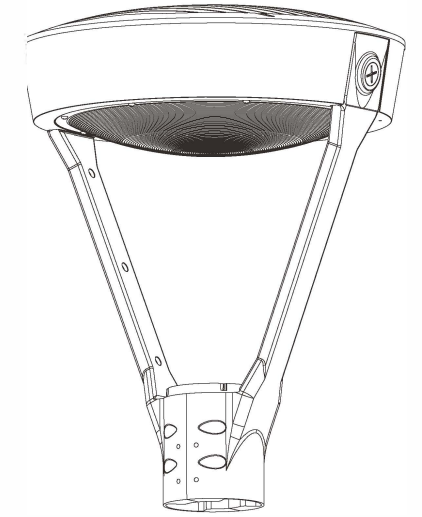
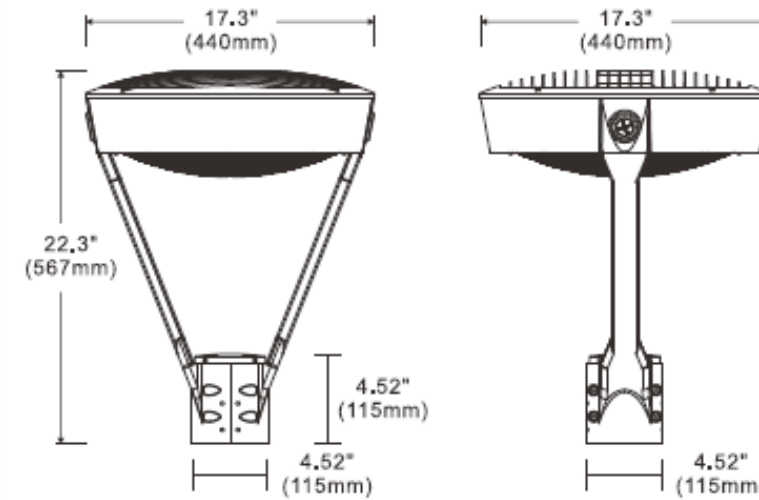
Example:NHL-SD-80W-50K-UNV-TS-BZ

Model No.	System Watts	Color Temp	Input Voltage	Distribution	Option	Finish	Starting Temp
					Accessories		
NHL-SD	80W=80W	30K-3000K	UNV=120-277V	TS=Type VS	OS=Occupancy Sensor	BZ=Bronze BK=Black SL=Silver WH=White	.40°C
	160W=160W	40K-4000K	480V=277-480V		HSS= 180° Shield		
		50K-5000K					

* Different LED Kelvin temperature available with 4-6 week lead time. Please call for a quote.

** DISCLAIMER: This test report was produced in accordance with IES LM-79 photometric testing protocol for luminaires, using a single representative test fixture. Actual production units may vary from the values reported here by up to ±10% .

Dimension:



* Different LED Kelvin temperature available with 4-6 week lead time. Please call for a quote.

** DISCLAIMER: This test report was produced in accordance with IES LM-79 photometric testing protocol for luminaires, using a single representative test fixture. Actual production units may vary from the values reported here by up to ±10% .

9 Gladney Avenue Bayvill, NJ 08721, USA
 Tel:(732)833-8086 Fax:(732)833-8085
 e-mail: sales@newhorizonlighting.com

www.newhorizonlighting.com