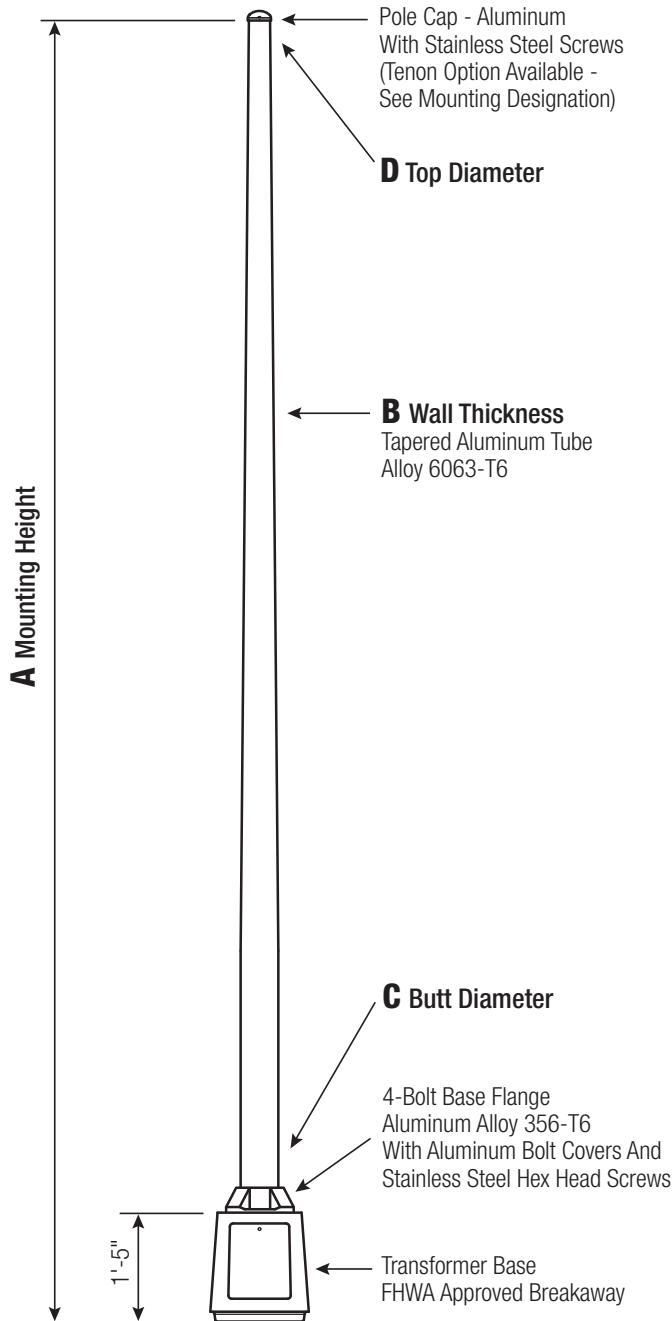


NHL-RTA

Round Tapered Aluminum Pole No Arm — Breakaway T-Base



Satin Aluminum or Powder Coated Finish per Customer Specification.

C BUTT DIA.	D TOP DIA.	F BOLT CIR. DIA.	G BASE SQ.	H BOLT PROJ.	I BOLT SIZE
6	4.5	12	13.0625	3.5	1 x 36 x 4
7	4.5	12	13.0625	3.5	1 x 36 x 4
8	4.5	15	15.375	3.5	1 x 36 x 4
9	4.5	15	15.375	3.5	1 x 36 x 4
10 Up To .250"	6	15	15.375	3.5	1 x 48 x 4
10 .312"	6	17.25	17.4375	3.5	1 x 48 x 4

Dimensions in Inches

Pole

The pole shaft will be constructed of seamless extruded tube of 6063 Aluminum Alloy per the requirements of ASTM B221. The shaft assembly shall be full-length heat treated after base weld to produce a T6 temper.

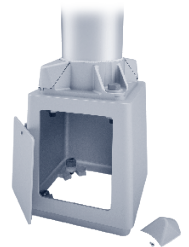
Base Style

Cast Aluminum Transformer Base (T-Base) of Alloy 356-T6 with Aluminum Door and Stainless Steel Hex Head Screw. FHWA Approved Breakaway.



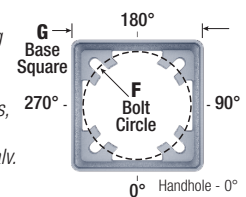
Handhole

6"-10" Butt Diameters -
Tapered Door Opening (9-3/4" W Base x 9-1/4" W Top x 11-3/4" H) with Flush Mount Aluminum Cover and Stainless Steel Hex Head Screw. Grounding Provisions tapped 1/4"-20NC and 1/2"-13NC are provided.

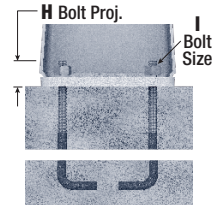


Anchorage

Base Anchorage includes four (4) L-shaped Steel Anchor Bolts conforming to AASHTO M314-90 Grade 55, four (4) each Heavy-Duty Flat Washers, Lock Washers, and Hex Nuts (all components Galv. Steel). Ten inches (10") of threaded end will be galvanized per ASTM A153.



Top Connecting Hardware includes four (4) each 1"-8NC x 3-3/4" Hex Head Bolts, Flat Washers, Heavy-Duty Flat Washers, Lock Washers, and Hex Nuts (all components Galv. Steel). A bolt circle template will be provided.



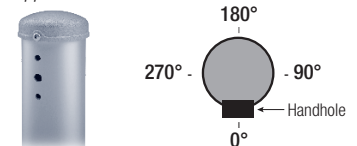
Vibration Damper

When determined necessary by the factory, a Vibration Damper will be factory-installed inside the pole shaft. Customer specification of the damper is available.

Mounting Designation

Side Drill Mount

For Side Drill Mount applications specify luminaire type, quantity and orientation. A luminaire drilling template must be supplied at time of order.



Tenon Mount - Welded or Spun

For Tenon Mount applications specify both Tenon diameter (2.375", 2.875", 3.5", etc.) and length (3", 4", etc.). Tenon style is factory option. Welded Tenon can be specified.

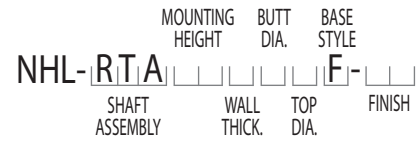


WARNING: Do not install light pole without luminaire.

A MTG. HGT.	B WALL THICKNESS	C BUTT DIAMETER	TOTAL LUM. WEIGHT	MAXIMUM EPA					NHL CATALOG NUMBER
				90	100	110	120	130	
20	0.125"	6	95	10.2	7.6	7.0	5.6	4.6	RTA20B6BF-**
20	0.156"	6	100	13.4	10.2	9.4	7.6	6.4	RTA20C6BF-**
20	0.188"	6	100	16.6	13.0	12.0	9.8	8.2	RTA20D6BF-**
20	0.156"	7	100	20.0	15.8	14.6	12.0	10.0	RTA20C7BF-**
20	0.188"	7	100	24.6	19.4	18.0	14.8	12.6	RTA20D7BF-**
20	0.156"	8	100	27.8	22.0	20.4	16.8	14.2	RTA20C8BF-**
20	0.188"	8	100	33.8	27.0	25.0	20.8	17.6	RTA20D8BF-**
25	0.156"	6	65	8.4	6.0	5.4	4.2	3.4	RTA25C6BF-**
25	0.188"	6	95	10.6	8.0	7.2	5.8	4.6	RTA25D6BF-**
25	0.156"	7	100	13.2	10.0	9.2	7.4	6.0	RTA25C7BF-**
25	0.188"	7	100	16.8	12.8	11.8	9.6	8.0	RTA25D7BF-**
25	0.156"	8	100	19.0	14.8	13.6	11.2	9.4	RTA25C8BF-**
25	0.188"	8	100	23.8	18.6	17.2	14.2	11.8	RTA25D8BF-**
25	0.219"	8	100	28.2	22.2	20.6	17.0	14.2	RTA25E8BF-**
25	0.250"	8	100	32.6	25.6	23.8	19.8	16.6	RTA25F8BF-**
30	0.156"	7	65	8.6	6.2	5.6	4.2	3.4	RTA30C7BF-**
30	0.188"	7	95	11.4	8.4	7.6	6.0	4.8	RTA30D7BF-**
30	0.156"	8	100	13.2	9.8	9.0	7.2	5.8	RTA30C8BF-**
30	0.188"	8	100	17.0	13.0	11.8	9.6	8.0	RTA30D8BF-**
30	0.219"	8	100	20.4	15.8	14.6	11.8	9.8	RTA30E8BF-**
30	0.250"	8	100	23.8	18.6	17.2	14.0	11.6	RTA30F8BF-**
30	0.188"	9	100	23.2	18.2	16.8	13.8	11.4	RTA30D9BF-**
30	0.250"	9	100	32.2	25.4	23.6	19.6	16.4	RTA30F9BF-**
30	0.188"	10	100	30.4	24.4	22.6	18.8	15.6	RTA30D1CF-**
35	0.156"	8	65	9.0	6.2	5.6	4.2	3.4	RTA35C8BF-**
35	0.188"	8	100	11.8	8.6	7.8	6.2	5.0	RTA35D8BF-**
35	0.219"	8	100	14.8	11.0	10.0	8.0	6.4	RTA35E8BF-**
35	0.250"	8	100	17.6	13.2	12.2	9.8	8.0	RTA35F8BF-**
35	0.188"	9	100	17.0	13.0	12.0	9.6	8.0	RTA35D9BF-**
35	0.250"	9	100	24.4	19.0	17.6	14.4	12.0	RTA35F9BF-**
35	0.188"	10	100	23.0	18.2	16.8	13.8	11.4	RTA35D1CF-**
35	0.219"	10	100	27.8	22.0	20.4	16.8	14.0	RTA35E1CF-**
35	0.250"	10	100	32.4	25.8	24.0	19.8	16.6	RTA35F1CF-**
35	0.312"	10	100	41.4	33.2	30.8	25.6	21.4	RTA35G1CF-**
40	0.188"	8	50	8.2	5.6	4.8	3.6	2.6	RTA40D8BF-**
40	0.219"	8	75	10.4	7.4	6.6	5.0	4.0	RTA40E8BF-**
40	0.250"	8	100	12.6	9.2	8.2	6.4	5.2	RTA40F8BF-**
40	0.188"	9	100	12.0	8.8	8.0	6.4	5.0	RTA40D9BF-**
40	0.250"	9	100	18.6	14.0	13.0	10.4	8.6	RTA40F9BF-**
40	0.188"	10	100	17.2	13.4	12.4	10.0	8.2	RTA40D1CF-**
40	0.219"	10	100	21.2	16.6	15.4	12.6	10.4	RTA40E1CF-**
40	0.250"	10	100	25.2	19.8	18.4	15.0	12.6	RTA40F1CF-**
40	0.312"	10	100	32.8	26.0	24.2	20.0	16.6	RTA40G1CF-**

Catalog Number System

The catalog number for NHL poles utilizes the following identification system.



Catalog Number Example -

NHL-RTA 30 D 8 B F - 01

Round Tapered Aluminum, 30' Mounting Height, .188" Wall Thickness, 8" Butt Diameter, 4.5" Top Diameter, Breakaway T-Base, Satin Aluminum Finish.

Wall Thickness

- B = .125"
- C = .156"
- D = .188"
- E = .219"
- F = .250"
- G = .312"

Butt Diameter

- 6 = 6"
- 7 = 7"
- 8 = 8"
- 9 = 9"
- 1 = 10"

Top Diameter

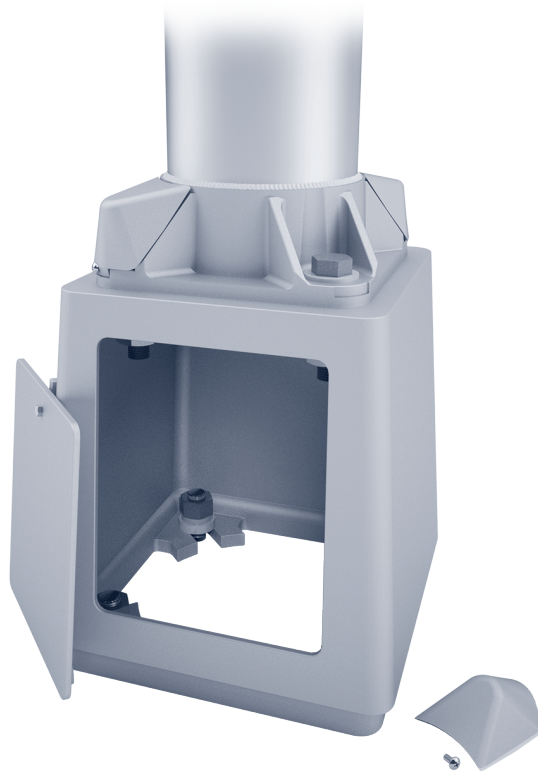
- B = 4.5"
- C = 6"

Base Style

F = Breakaway T-Base

Finish

- 01 = Satin Aluminum
- BA = Black Powder Coat
- BH = White Powder Coat
- BM = Dark Bronze Powder Coat
- BV = Dark Green Powder Coat
- GC = Gray Powder Coat
- ** = Specify Finish



EPA Notes:

Effective Projected Area (EPA) in square feet. EPA's calculated using wind velocity (mph) indicated in accordance with 2009 AASHTO LTS-5 using a 25 year design life. Maximum EPA is based on the luminaire weight shown. Increased luminaire weight may reduce the maximum EPA. If weight is exceeded, or if other design life or code is required, please consult the factory.