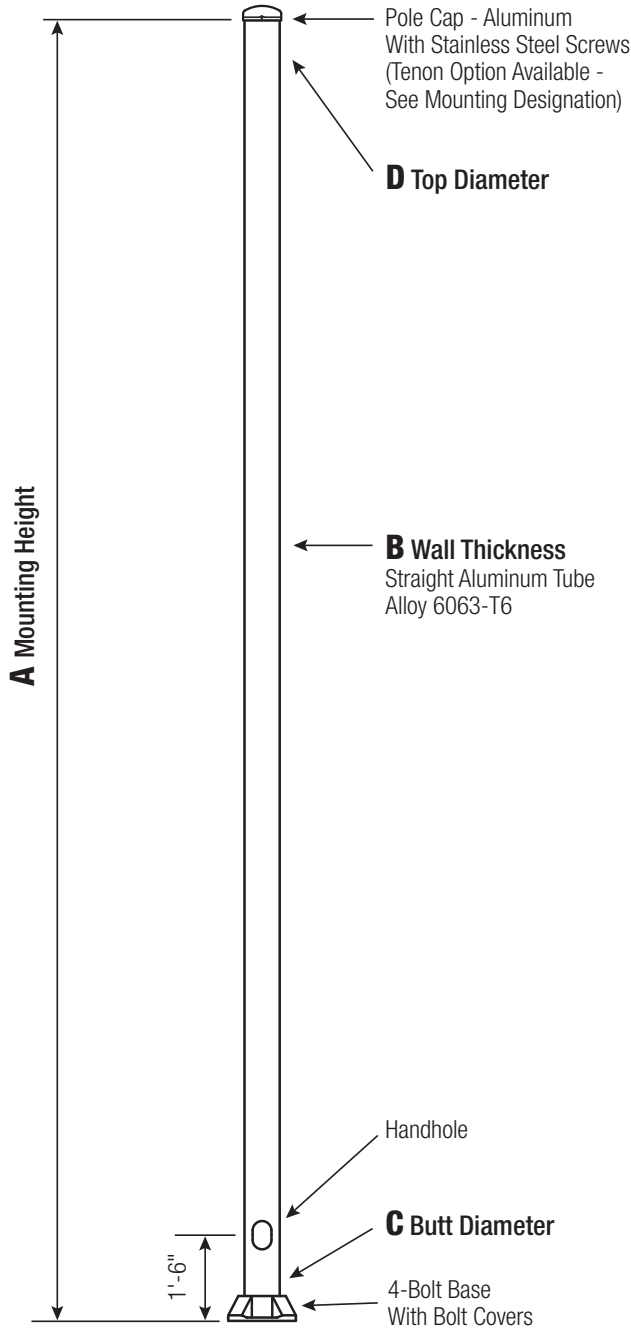


NHL-RSA

Round Straight Aluminum Pole No Arm — 4-Bolt Base



Satin Aluminum or Powder Coated Finish per Customer Specification.

C BUTT DIA.	D TOP DIA.	F BOLT CIR. DIA.	G BASE SQ.	H BOLT PROJ.	I BOLT SIZE
4	4	6.5 - 8	7.5	2	.75 x 17 x 3
5	5	7.5 - 8	7.5	2	.75 x 17 x 3
6	6	9 - 10	9.75	2.75	.75 x 30 x 3*
7	7	10 - 11	10.5	2.75	1 x 36 x 4
8	8	11 - 12	11.25	2.75	1 x 36 x 4
9	9	12.5 - 14	12.75	2.75	1 x 36 x 4
10 Up To .250"	10	14 - 15	14	3.25	1 x 48 x 4
10 .312"	10	14 - 15	14	3.25	1.25 x 48 x 6

*1" x 36" x 4" Anchor Bolts can be specified for 6" butt diameter poles.

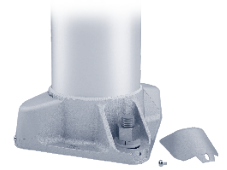
Dimensions in Inches

Pole

The pole shaft will be constructed of seamless extruded tube of 6063 Aluminum Alloy per the requirements of ASTM B221. The shaft assembly shall be full-length heat treated after base weld to produce a T6 temper.

Base Style

4-Bolt Cast Aluminum Base Flange of Alloy 356-T6 with Aluminum Bolt Covers (Alloy 356-F) and Stainless Steel Hex Head Attaching Screws.



Handhole

4"-5" Butt Diameters - 2" x 4" Handhole with curved Lap Style Aluminum Door and two (2) SS Self-Tapping Attaching Screws. A Grounding Provision incorporating a tapped 1/4"-20NC hole is provided opposite the Handhole.

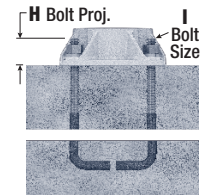
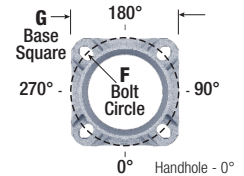
6" Butt Diameter - Reinforced, 3" x 5" curved Cast Aluminum Frame (Alloy 356-T6) with Aluminum Door and two (2) SS Hex Head Screws. A Grounding Provision incorporating a 3/8" diameter hole is provided opposite the Handhole.

7"+ Butt Diameters - Reinforced, 4" x 6" curved Cast Aluminum Frame (Alloy 356-T6) with Aluminum Door and two (2) SS Hex Head Screws. Reinforced Frame will contain a tapped 3/8"-16NC Grounding Provision.

Anchorage

Anchorage Kit will include four (4) L-shaped Steel Anchor Bolts conforming to AASHTO M314-90 Grade 55. Ten inches (10") of threaded end will be galvanized per ASTM A153.

Kits will contain four (4) Hex Nuts, four (4) Lock Washers, and four (4) Flat Washers (all components Galvanized Steel). A bolt circle template will be provided.



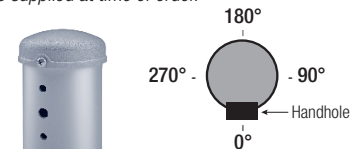
Vibration Damper

When determined necessary by the factory, a Vibration Damper will be factory-installed inside the pole shaft. Customer specification of the damper is available.

Mounting Designation

Side Drill Mount

For Side Drill Mount applications specify luminaire type, quantity and orientation. A luminaire drilling template must be supplied at time of order.



Tenon Mount

For Tenon Mount applications specify both Tenon diameter (2.375", 2.875", 3.5", etc.) and length (3", 4", etc.).

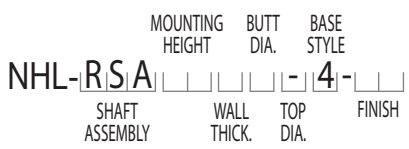


WARNING: Do not install light pole without luminaire.

A Mtg. Hgt.	B WALL THICKNESS	C BUTT DIAMETER	TOTAL LUM. WEIGHT	MAXIMUM EPA					OLD CAT. NUMBER	CATALOG NUMBER
				90	100	110	120	130		
08	0.125"	4	100	11.4	9.0	8.3	6.8	5.6	78S-002	RSA08B4-4-**-
10	0.125"	4	100	8.1	6.2	5.7	4.6	3.7	78S-003	RSA10B4-4-**-
10	0.125"	5	100	15.8	12.4	11.6	9.6	8.2	78S-012	RSA10B5-4-**-
12	0.125"	4	70	6.0	4.4	4.0	3.1	2.3	78S-004	RSA12B4-4-**-
12	0.125"	5	100	12.0	9.4	8.6	7.2	6.0	78S-009	RSA12B5-4-**-
12	0.156"	5	100	15.4	12.0	11.2	9.2	7.8		RSA12C5-4-**-
12	0.188"	5	100	18.6	14.6	13.6	11.2	9.5		RSA12D5-4-**-
14	0.125"	4	40	4.4	3.1	2.7	1.9	1.3	78S-005	RSA14B4-4-**-
14	0.125"	5	100	9.2	7.0	6.4	5.2	4.4	78S-010	RSA14B5-4-**-
14	0.156"	5	100	12.0	9.2	8.6	7.0	5.8		RSA14C5-4-**-
14	0.188"	5	100	14.8	11.4	10.6	8.8	7.4		RSA14D5-4-**-
16	0.125"	4	40	3.1	2.0	1.7	1.0	-	78S-006	RSA16B4-4-**-
16	0.125"	5	100	7.1	5.1	4.7	3.8	3.1	78S-011	RSA16B5-4-**-
16	0.156"	5	100	9.4	7.0	6.5	5.3	4.4	78S-029	RSA16C5-4-**-
16	0.188"	5	100	11.8	9.0	8.2	6.8	5.6	78S-030	RSA16D5-4-**-
16	0.156"	6	100	19.2	15.4	14.4	11.8	10.0		RSA16C6-4-**-
16	0.188"	6	100	23.8	19.0	17.6	14.6	12.4		RSA16D6-4-**-
18	0.125"	5	60	5.4	3.6	3.3	2.6	2.0	78S-007	RSA18B5-4-**-
18	0.156"	5	100	7.2	5.2	4.8	3.8	3.1	78S-031	RSA18C5-4-**-
18	0.188"	5	100	9.2	6.8	6.2	5.1	4.2	78S-032	RSA18D5-4-**-
18	0.188"	6	100	19.6	15.6	14.6	12.0	10.0		RSA18D6-4-**-
20	0.125"	5	40	3.8	2.3	2.1	1.5	1.1	78S-008	RSA20B5-4-**-
20	0.156"	5	60	5.6	3.7	3.4	2.6	2.1	78S-033	RSA20C5-4-**-
20	0.188"	5	95	7.2	5.0	4.6	3.7	3.0	78S-034	RSA20D5-4-**-
20	0.125"	6	100	9.4	7.4	6.8	5.6	4.6	55-001	RSA20B6-4-**-
20	0.156"	6	100	12.8	10.2	9.4	7.6	6.4	55-002	RSA20C6-4-**-
20	0.188"	6	100	16.2	12.8	12.0	9.8	8.2	55-003	RSA20D6-4-**-
20	0.156"	7	100	20.0	15.8	14.8	12.2	10.2	55-004	RSA20C7-4-**-
20	0.188"	7	100	24.6	19.6	18.4	15.2	12.8	55-005	RSA20D7-4-**-
20	0.156"	8	100	28.2	22.4	21.0	17.4	14.6	55-006	RSA20C8-4-**-
20	0.188"	8	100	34.4	27.6	25.6	21.4	18.0	55-007	RSA20D8-4-**-
25	0.156"	6	100	7.4	5.6	5.2	4.1	3.3	55-062	RSA25C6-4-**-
25	0.188"	6	100	10.0	7.6	7.1	5.7	4.6	55-063	RSA25D6-4-**-
25	0.156"	7	100	13.0	10.2	9.4	7.6	6.3	55-064	RSA25C7-4-**-
25	0.188"	7	100	16.4	13.0	12.0	9.8	8.2	55-065	RSA25D7-4-**-
25	0.156"	8	100	19.2	15.2	14.2	11.6	9.8	55-066	RSA25C8-4-**-
25	0.188"	8	100	24.0	19.0	17.8	14.6	12.2	55-067	RSA25D8-4-**-
25	0.219"	8	100	28.6	22.8	21.2	17.6	14.8	55-068	RSA25E8-4-**-
25	0.250"	8	100	33.0	26.4	24.4	20.4	17.2	55-069	RSA25F8-4-**-
30	0.188"	6	60	5.6	4.2	3.8	2.9	2.2	55-123	RSA30D6-4-**-
30	0.156"	7	100	8.0	6.0	5.6	4.4	3.5	55-124	RSA30C7-4-**-
30	0.188"	7	100	10.8	8.4	7.7	6.2	5.0	55-125	RSA30D7-4-**-
30	0.156"	8	100	13.2	10.2	9.4	7.6	6.3	55-126	RSA30C8-4-**-
30	0.188"	8	100	17.0	13.4	12.4	10.0	8.4	55-127	RSA30D8-4-**-
30	0.219"	8	100	20.6	16.2	15.0	12.4	10.4	55-128	RSA30E8-4-**-
30	0.250"	8	100	24.0	19.0	17.8	14.6	12.2	55-129	RSA30F8-4-**-
30	0.188"	9	100	23.8	18.8	17.6	14.4	11.6	55-131	RSA30D9-4-**-
30	0.250"	9	100	33.0	26.2	24.4	20.2	16.4	55-133	RSA30F9-4-**-
30	0.188"	10	100	31.4	25.2	23.2	18.6	15.0	55-139	RSA30D1-4-**-
35	0.156"	8	100	8.6	6.4	6.0	4.7	3.8	55-186	RSA35C8-4-**-
35	0.188"	8	100	11.8	9.0	8.4	6.6	5.4	55-187	RSA35D8-4-**-
35	0.219"	8	100	14.6	11.4	10.6	8.6	7.0	55-188	RSA35E8-4-**-
35	0.250"	8	100	17.6	13.8	12.8	10.4	8.6	55-189	RSA35F8-4-**-
35	0.188"	9	100	17.4	13.6	12.6	10.2	7.8	55-191	RSA35D9-4-**-
35	0.250"	9	100	25.0	19.8	18.4	15.0	12.0	55-193	RSA35F9-4-**-
35	0.188"	10	100	24.0	19.0	17.4	13.6	10.6	55-199	RSA35D1-4-**-
35	0.219"	10	100	28.8	22.8	21.0	16.6	13.2	55-200	RSA35E1-4-**-
35	0.250"	10	100	33.6	26.8	24.4	19.6	15.8	55-201	RSA35F1-4-**-
35	0.312"	10	100	37.0	29.6	27.2	22.0	17.8	55-202	RSA35G1-4-**-
40	0.188"	8	80	7.6	5.8	5.2	4.0	3.1	55-247	RSA40D8-4-**-
40	0.219"	8	100	10.0	7.6	7.0	5.6	4.4	55-248	RSA40E8-4-**-
40	0.250"	8	100	12.6	9.6	8.8	7.0	5.8	55-249	RSA40F8-4-**-
40	0.188"	9	100	12.6	9.6	9.0	7.0	5.0	55-251	RSA40D9-4-**-
40	0.250"	9	100	19.0	14.8	13.8	11.0	8.4	55-253	RSA40F9-4-**-
40	0.188"	10	100	18.2	14.2	12.8	9.6	7.2	55-259	RSA40D1-4-**-
40	0.219"	10	100	22.2	17.4	16.0	12.2	9.4	55-260	RSA40E1-4-**-
40	0.250"	10	100	26.2	20.8	19.0	14.8	11.6	55-261	RSA40F1-4-**-
40	0.312"	10	100	29.4	23.4	21.4	16.8	13.4	55-262	RSA40G1-4-**-

Catalog Number System

The catalog number for NHL poles utilizes the following identification system.



Catalog Number Example -

NHL-RSA 30 D 8 - 4 - 01
 Round Straight Aluminum, 30' Mounting Height, .188" Wall Thickness, 8" Butt Diameter, No Taper, 4-Bolt Base, Satin Aluminum Finish.

Wall Thickness

- B = .125"
- C = .156"
- D = .188"
- E = .219"
- F = .250"
- G = .312"

Butt Diameter

- 4 = 4"
- 5 = 5"
- 6 = 6"
- 7 = 7"
- 8 = 8"
- 9 = 9"
- 1 = 10"

Top Diameter

- = No Taper

Base Style

4 = 4-Bolt Base

Finish

- 01 = Satin Aluminum
- BA = Black Powder Coat
- BH = White Powder Coat
- BM = Dark Bronze Powder Coat
- BV = Dark Green Powder Coat
- GC = Gray Powder Coat
- ** = Specify Finish

EPA Notes:

Effective Projected Area (EPA) in square feet. EPA's calculated using wind velocity (mph) indicated in accordance with 2009 AASHTO LTS-5 using a 25 year design life. Maximum EPA is based on the luminaire weight shown. Increased luminaire weight may reduce the maximum EPA. If weight is exceeded, or if other design life or code is required, please consult the factory.

