



Round & Square COB Bollards

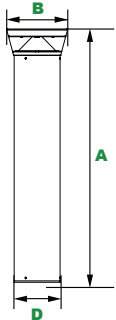
L70
25°C **106,000 Hours**



NHL-PRSB - Round COB Bollard (Black)



NHL-PSSB - Square COB Bollard (Bronze)



Dimensions

Width (B)	9 1/4" (234mm)
Diameter (D)	7" (180mm)
Height (A)	34 3/4" (882mm)

The NHL-PRSB and NHL-PSSB LED Cutoff Bollards with polycarbonate lenses and sealed optical compartments are designed to replace HID lighting systems up to 70w MH or HPS. These fixtures are ideal for retail centers, industrial parks, schools and universities, public transit and airports, office buildings and medical facilities.

Specifications and Features:

Housing:

Extruded Aluminum Housing with Flush Mounting Base & Vandal-Resistant Screws, Flat Top, Internal Driver Tray for Easy Maintenance.

Listing & Ratings:

CSA: Listed for Wet Locations, ANSI/UL 1598, 8750
IP66 Sealed LED Compartment.

Finish:

Textured Architectural Bronze or Black Powdercoat Finish Over a Chromate Conversion Coating. Custom Colors Available Upon Request.

Reflector:

Reflective White Polycarbonate Cone Reflector

Lens:

Clear Polycarbonate Vandal-Resistant Lens

Mounting Options:

Mounting Kit with 8" Anchor Bolts, Included.

Wattage:

COB: 20w, System: 20w; (70w HID Equivalent)

Driver:

Electronic Driver, 120-277V, 50/60Hz or 347V, 50/60Hz; Less Than 20% THD and PF>0.90. Standard Internal Surge Protection 2kV. 0-10V Dimming Standard for a Dimming Range of 100% to 10%; Dimming Source Current is 150 Microamps.

Warranty:

5-Year Warranty for -20°C to +40°C Environment.

See Page 2 for Projected Lumen Maintenance Table.

Order Information Example:

NHL-PSSB-20W-41K-UNV

Model	Wattage	CCT	Voltage	Color	Height	Options
NHL-PRSB=Round Bollard NHL-PSSB=Square Bollard	20W=20w	41K=4100K	UNV=120-277V	Z=Bronze B=Black CC=Custom (Consult Factory)	(Leave Blank)= 34 3/4" Standard Height 30=30" Height	SF=Single Fuse DF=Double Fuse SP=Surge Protection GF1=GFCI Outlet, 15A, 120V

Project Information:

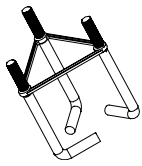
Project Name: _____ Fixture Type: _____
 Complete Catalog #: _____ Date: _____
 Comments: _____

Certification & Listings:

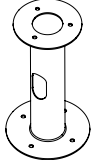


Specifications subject to change without notice. Rev. 121818

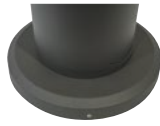
Accessories & Replacement Parts:



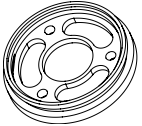
NHL-BOLAN



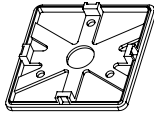
NHL-BOLRM



NHL-BREBASE*



NHL-BORBASE



NHL-BOSBASE



NHL-BOADP1

*Shown Mounted

Mounting Accessories (Order Separately, Field Installed)

NHL-BOLAN4	Mounting Kit, Includes Bracket & Three (3) 4" Anchor Bolts
NHL-BOLAN8	Mounting Kit, Includes Bracket & Three (3) 8" Anchor Bolts
NHL-BOLAN12	Mounting Kit, Includes Bracket & Three (3) 12" Anchor Bolts
NHL-BOLAN15	Mounting Kit, Includes Bracket & Three (3) 15" Anchor Bolts
NHL-BOLRM	Root Mount Kit
NHL-BREBASE*	Bollard Retrofit Base Kit Adapts New Bollards to Most Existing Bolt Patterns. Fits all LEPG Bollards. Die Cast with Powdercoat Finish, Hardware Included. 11 1/2" Dia. x 1 1/2" H

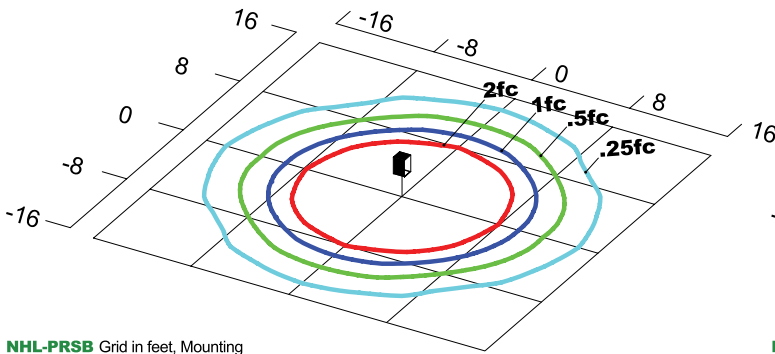
*Specify Color: Z=Bronze, B=Black, C=Custom (Consult Factory)

Replacement Parts (Order Separately, Field Installed)

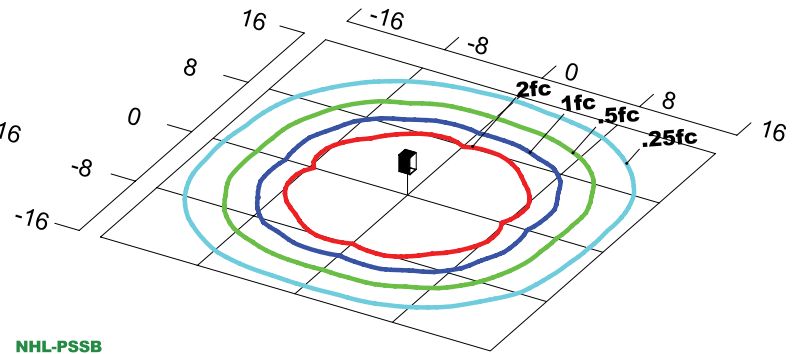
NHL-BORBASE*	Die Cast Base Plate with Powdercoat Finish Over a Chromate Conversion Coating. Fits B1.
NHL-BOSBASE*	Die Cast Base Plate with Powdercoat Finish Over a Chromate Conversion Coating. Fits B2.
NHL-BOADP1	Adapter Plate with Gaskets for Outlet Boxes. Fits LEPG Round Bollards. Die Cast with Bronze Powdercoat Finish.

*Specify Color: Z=Bronze, B=Black, C=Custom (Consult Factory)

Photometric Data



NHL-PRSB Grid in feet, Mounting Height = 3.5 ft.



NHL-PSSB Grid in feet, Mounting Height = 3.5 ft.

Photometric Performance

LED COB Watts	Drive Current (mA)	Input Watts	Bollards	4100 CCT 80 CRI				
				Lumens	LPW	B	U	G
LED 20w	350	20	PRSB (Round Bollard)	2,282	87	1	0	1
			PSSB (Square Bollard)	2,409	91	1	0	1

Projected Lumen Maintenance

Data shown for 4100 CCT			Compare to MH			
TM-21-11	Input Watts	Initial	25,000 Hrs	50,000 Hrs	100,000 Hrs	Calculated L70@ 25°C
PRSB L70 Lumen Maintenance @ 25°C / 77°F	20	1.00	0.93	0.86	0.72	106,000
PSSB L70 Lumen Maintenance @ 25°C / 77°F	20	1.00	0.93	0.86	0.72	106,000
TM-21-11	Input Watts	Initial	25,000 Hrs	50,000 Hrs	100,000 Hrs	Calculated L70@ 50°C
PRSB L70 Lumen Maintenance @ 50°C / 122°F	20	1.00	0.91	0.83	0.66	88,000
PSSB L70 Lumen Maintenance @ 50°C / 122°F	20	1.00	0.91	0.83	0.66	88,000
TM-21-11	Input Watts	Initial	25,000 Hrs	50,000 Hrs	100,000 Hrs	Calculated L80@ 40°C
PRSB L80 Lumen Maintenance @ 40°C / 104°F	20	1.00	0.92	0.84	0.67	61,000
PSSB L80 Lumen Maintenance @ 40°C / 104°F	20	1.00	0.92	0.84	0.67	61,000

NOTES:

1. Projected per IESNA TM-21-11. Data references the extrapolated performance projections for the 350mA base model in a 25°C ambient, based on 10,000 hours of LED testing per IESNA LM-80-08.
2. Compare to MH box indicates suggested Light Loss Factor (LLF) to be used when comparing to Metal Halide (MH) systems.