

NHL-GNVP53VP Vaporproof with Straight Shade and Gooseneck Arm



The NHL-GNVP53VP LEDicated Vaporproof Straight Shade Gooseneck LEDlight luminaire is available with 5 Gooseneck arms of various lengths and is designed to replace HID lighting systems up to 175w MH or HPS. This vapor resistant fixture can withstand extreme physical and environmental abuse and is ideal for retail centers, industrial parks, schools and universities, public transit and airports, office buildings and medical facilities. Designed for architectural wall mounting up to heights of 20 feet based on light level and uniformity requirements.

NHL-GNVP53VP Specifications and Features:

Housing:

Heavy Duty Die Cast Aluminum Housing with Integral Heat Sinking, 3/4" NPS Threaded Mount.

Listing & Ratings:

CSA: Listed for Wet Locations, ANSI/UL 1598, 8750
IP66 Sealed LED Compartment.

Finish:

Powdercoat Finish Over a Chromate Conversion Coating. Custom Colors Available Upon Request.

Lens:

Flat Clear Tempered Glass Lens

Mounting:

Fixed Mount

Wattage:

Array: 23w, System: 27w(175w HID Equivalent)

Driver:

Electronic Driver, 120-277V, 50/60Hz; Less Than 20% THD and PF>0.90. Standard Internal Surge Protection 2kV. 0-10V Dimming Standard for a Dimming Range of 100% to 10%; Dimming Source Current is 150 Microamps.

Warranty:

5-Year Warranty for -40°C to +50°C Environment.

See Page 3 for Projected Lumen Maintenance Table.

Dimensions

Base Length (B1)	8" (203mm)
Base Height (B2)	8" (203mm)
Length (A)	44" (1116mm)
Height (C)	27 1/2" (699mm)

**See Page 2 for
Fixture and Arm
Dimensions**

Step 1: Select NHL-GNVP53VP

Order Information Example:

NHL-GNVP53VP-F-23W-50K-UNV-R-GNF-DF

GNVP53VP	F	23		U		GNF	
Model	Optics	Wattage	CCT	Voltage	Color	Mounting	Options
NHL-GNVP53VP= LEDicated Pendant Mount Vaporproof	F=Type V	23W=23w	4K=4000K 5K=5000K	U=120-277V	B=Black, RAL9011 P=Platinum, RAL9006 R=Red, RAL3020 W=White, RAL9016 CC=Custom (Consult Factory)	GNF=Fixed Downlight, Includes 72" of Wire for Arm Feed Through to Wall Box	SF=Single Fuse DF=Double Fuse

L70
25°C

187,000 Hours

Gooseneck Arm Specifications and Features:

Construction:

Heavy-Duty 3/4" Aluminum Arms with 3/4" NPS Threads on Fixture Mounting End.

Finish:

Powdercoat Finish Over a Chromate Conversion Coating. Custom Colors Available Upon Request.

Mounting Options:

Mount with 3/4" Square or Round Mounting Plates.

Step 2: Select Arm

Order Information Example:

GNA01336RS

Model	Length	Color	Mounting
GNA013 - Classic Hook	36=36" 30=30"	B=Black, RAL9011 P=Platinum, RAL9006 R=Red, RAL3020 W=White, RAL9016 CC=Custom (Consult Factory)	S=Square Oversized Wall Mount R=Round Wall Mount
GNA023 - Straight	30=30" 24=24" 18=18" 12=12"		
GNA033 - Straight Offset	30=30" 24=24"		
GNA043 - Straight Rise	30=30"		
GNA053 - Round Hook	30=30" 24=24" 18=18"		

Step 3: Select Shade

Order Information Example:

VS30SR

Model	Color
VS30S	
VS30S=Straight Shade	B=Black, RAL9011 P=Platinum, RAL9006 R=Red, RAL3020
	W=White, RAL9016 CC=Custom (Consult Factory)

Specification Guide:



Project Information:

Project Name: _____ Fixture Type: _____
 Complete Catalog #: _____ Date: _____
 Comments: _____

Certification & Listings:



Specifications subject to change without notice. Rev. 060418



Gooseneck LEDlights

NHL-GNVP53VP with Straight Shade and Gooseneck Arm

Accessories & Replacement Parts



VS30S

Replacement Parts (Order Separately, Field Installed)

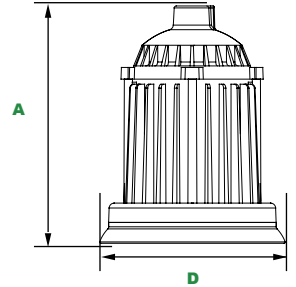
VS30S* Straight Aluminum Shade, Powdercoat Finish

*Specify Color: B=Black, P=Platinum, R=Red, W=White, C=Custom (Consult Factory)

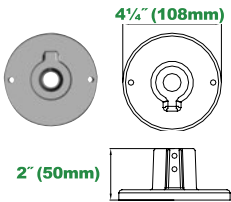
VP53Q Dimensions



LEDicated Vaporproof

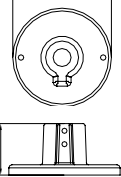


Wall Plate Dimensions



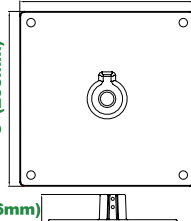
2" (50mm)

4 1/4" (108mm)



1 3/4" (46mm)

8" (203mm)



GNSMP3

Replacement Wall Plates (Order Separately, Field Installed)

GNRMP3* Round Wall Mount Plate, Powdercoat Finish.

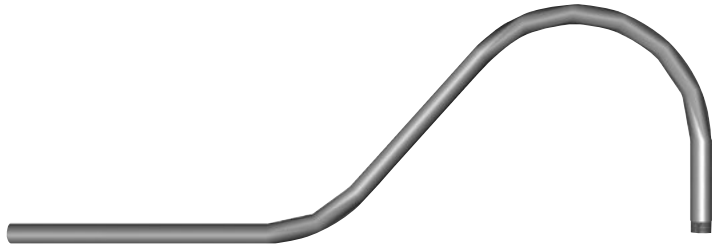
GNSMP3* Square Oversized Wall Mount Plate, Powdercoat Finish.

*Specify Color: B=Black, P=Platinum, R=Red, W=White, C=Custom (Consult Factory)

Dimensions

Diameter (D)	7 1/4" (184mm)
Height (A)	9 1/4" (235mm)

Gooseneck Dimensions



36" (915mm)

30" (762mm)

12" (305mm)

GNA01336P Classic Hook

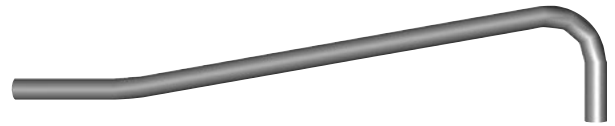


30" (762mm)

24" (609mm)

6" (152mm)

GNA03330P Straight Offset



30" (762mm)

6" (152mm)

GNA04330P Straight Rise



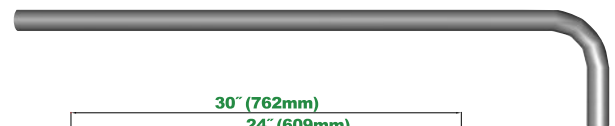
30" (762mm)

24" (609mm)

18" (456mm)

8 1/2" (218mm)

GNA05336P Round Hook



30" (762mm)

24" (609mm)

18" (456mm)

12" (304mm)

6" (152mm)

GNA02330P Straight

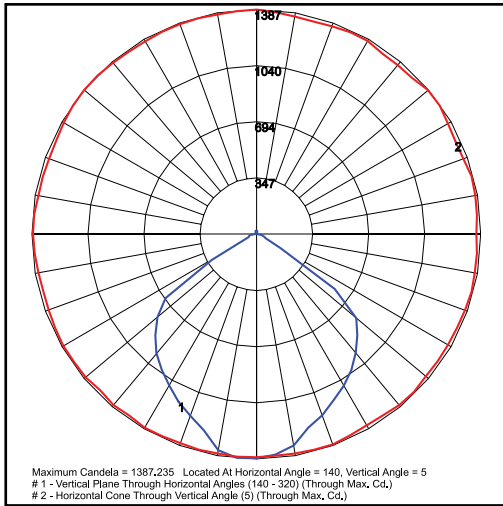
Specifications subject to change without notice. Rev. 103017



Gooseneck LEDlights

NHL-GNVP53VP with Straight Shade and Gooseneck Arm

Photometric Data



NHL-GNVP53VP-F-23W-50K-UNV
Type V, Straight Shade
Grid in MH
MH=10 Feet

Photometric Performance

LED Board Watts	Drive Current (mA)	Input Watts	Optics	5000 CCT 80 CRI					4000 CCT 80 CRI				
				Lumens	LPW	B	U	G	Lumens	LPW	B	U	G
LED 23w	116	27	Type V	3,031	112	2	2	1	2,774	103	1	2	1

Projected Lumen Maintenance

Data shown for 5000 CCT			Compare to MH				
TM-21-11	Input Watts	Initial	25,000 Hrs	50,000 Hrs	100,000 Hrs	Calculated L70@ 25°C	
L70 Lumen Maintenance @ 25°C / 77°F	27	1.00	0.96	0.92	0.84	187,000	
TM-21-11	Input Watts	Initial	25,000 Hrs	50,000 Hrs	100,000 Hrs	Calculated L70@ 50°C	
L70 Lumen Maintenance @ 50°C / 122°F	27	1.00	0.93	0.86	0.72	107,000	
TM-21-11	Input Watts	Initial	25,000 Hrs	50,000 Hrs	100,000 Hrs	Calculated L80@ 40°C	
L80 Lumen Maintenance @ 40°C / 104°F	27	1.00	0.94	0.88	0.76	82,000	

NOTES:

1. Projected per IESNA TM-21-11. Data references the extrapolated performance projections for the 116mA base model in a 25°C ambient, based on 10,000 hours of LED testing per IESNA LM-80-08.
2. Compare to MH box indicates suggested Light Loss Factor (LLF) to be used when comparing to Metal Halide (MH) systems.

Specifications subject to change without notice. Rev. 020818