

# NHL-DBL LED

Architectural Indoor



PROJECT:	
TYPE:	
PO#:	QTY:
COMMENTS:	

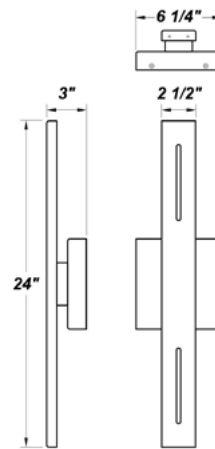
## FEATURES

- Aluminum Fascia And Mount Pan w/ Matte Silver Powder Coat Finish
- Aluminum Mount Plate Mounts to Wall Surface (Offset Over And Attached to J-Box)
- Constant Current Leading / Trailing Edge Driver
- Indirect Light Source
- UL Class 2 Driver
- ADA Compliant
- CSA Listed Dry Location For Wall Mount
- LED Light Fixture



## LINE DRAWING

LINE DRAWING NOT TO SCALE

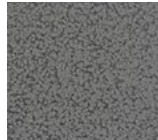


## FINISHES

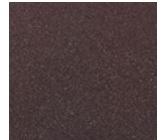
Antique Copper



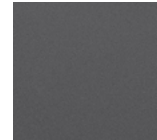
Antique Silver



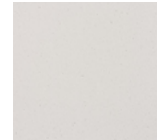
Bronze Mist



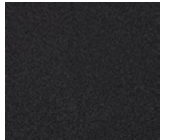
Matte Silver



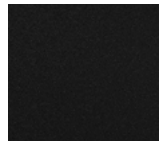
Sand



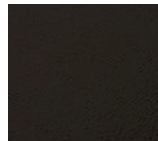
Swedish Steel



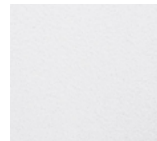
Textured Black



Textured Bronze



Textured White



# NHL-DBL LED

Architectural Indoor



Fixture Core

PROJECT:	
TYPE:	
PO#:	QTY:
COMMENTS:	

PRODUCT CODE	SOURCE/WATTAGE	VOLTAGE	DIMMING DRIVER
NHL-DBL -	<b>L11.3-LT350</b> - 11.3W @ 350mA ELV Dimming Driver <b>L13.0-LT400</b> - 13.0W @ 400mA ELV Dimming Driver	UNV=120V-277V  (50 / 60Hz)	Not Applicable
ORDER INFO			
NHL-DBL Example ^	L11.3	UNV	Not Applicable

## Aesthetics & Options

TRIM	FINISH	COLOR TEMP	OPTIONS
Not Applicable	<b>AC</b> - Antique Copper <b>TB</b> - Textured Black <b>AS</b> - Antique Silver <b>BT</b> - Bronze Mist <b>BZ</b> - Textured Bronze <b>SM</b> - Matte Silver (Standard) <b>TW</b> - Textured White <b>SN</b> - Sand <b>SW</b> - Swedish Steel	<b>27K</b> - 2700K Color Temp <b>30K</b> - 3000K Color Temp <b>35K</b> - 3500K Color Temp <b>40K</b> - 4000K Color Temp <b>50K</b> - 5000k Color Temp	<b>SP</b> - Surge Protector
ORDER INFO			
Not Applicable Example ^	AC	27K	SP

PROD	SOURCE	30K SPECS				
NHL-DBL	L11.3	<ul style="list-style-type: none"> <li>30K - 3000K Color Temp</li> <li>1740 LED Source Lumens</li> <li>154.0 LED Source Lumens Per Watt</li> </ul>				
	L13.0	<ul style="list-style-type: none"> <li>30K - 3000K Color Temp</li> <li>1989 LED Source Lumens</li> <li>153.0 LED Source Lumens Per Watt</li> </ul>				

REPLACEMENT PART	PART NO	NOTES
		Don't see the configuration you are looking for? Call us today at (732) 833-8086

# NHL-DBL LED

Architectural Indoor



Fixture Core

PROJECT:	
TYPE:	
PO#:	QTY:
COMMENTS:	

PRODUCT CODE	SOURCE/WATTAGE	VOLTAGE	DIMMING DRIVER
NHL-DBL -	<b>L14.6-LT450</b> - 14.6W @ 450mA ELV Dimming Driver <b>L16.5-LT500</b> - 16.5W @ 500mA ELV Dimming Driver	<b>UNV-120V-277V</b>  (50 / 60Hz)	Not Applicable
ORDER INFO			
NHL-DBL Example ^	L11.3	UNV	Not Applicable

## Aesthetics & Options

TRIM	FINISH	COLOR TEMP	OPTIONS
Not Applicable	<b>AC</b> - Antique Copper <b>TB</b> - Textured Black <b>AS</b> - Antique Silver <b>BT</b> - Bronze Mist <b>BZ</b> - Textured Bronze <b>SM</b> - Matte Silver (Standard) <b>TW</b> - Textured White <b>SN</b> - Sand <b>SW</b> - Swedish Steel	<b>27K</b> - 2700K Color Temp <b>30K</b> - 3000K Color Temp <b>35K</b> - 3500K Color Temp <b>40K</b> - 4000K Color Temp <b>50K</b> - 5000k Color Temp	<b>SP</b> - Surge Protector
ORDER INFO			
Not Applicable Example ^	AC	27K	SP

PROD	SOURCE	30K SPECS				
NHL-DBL	L14.6	<ul style="list-style-type: none"> <li>30K - 3000K Color Temp</li> <li>2237 LED Source Lumens</li> <li>153.2 LED Source Lumens Per Watt</li> </ul>				
	L16.5	<ul style="list-style-type: none"> <li>30K - 3000K Color Temp</li> <li>2486 LED Source Lumens</li> <li>150.6 LED Source Lumens Per Watt</li> </ul>				

REPLACEMENT PART	PART NO	NOTES
		Don't see the configuration you are looking for? Call us today at (732) 833-8086