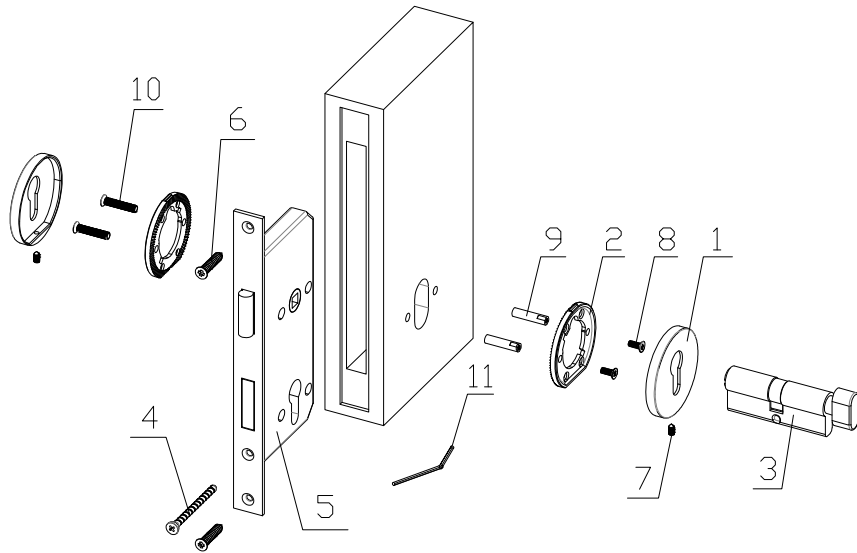


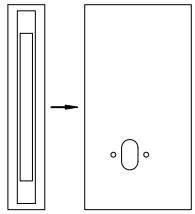
52MM & 63MM ROSETTE ACCESSORIES LIST & INSTALLATION FOR ROLLER MORTISE

1. Structure Diagram

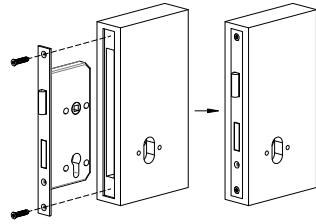


2. Accessories List

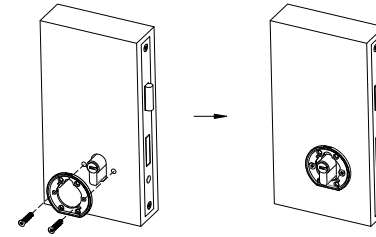
No.	Name	Specification / mm	Qty(pcs)	Accessories
1	Escutcheon		2	
2	Spring Mechanism		2	
3	Cylinder	European Standard	1	
4	Cylinder Screws		1	
5	Mortise		1	
6	Screws		2	
7	Allen Screws	M4x6	2	Screw Packages
8	Connecting Screws	M4x10	2	
9	Studs	∅ 6xM4x35	2	
10	Connecting Screws	M4x28	2	
11	Allen Wrench	∅ 2	1	
Door Thickness: 35 – 45mm				



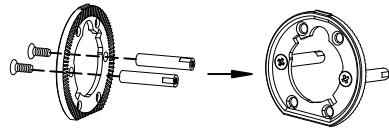
1. Follow the Installation Specification and drill the hole for rosette and escutcheon.



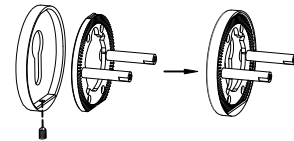
2. Install the mortise with the wood screws.



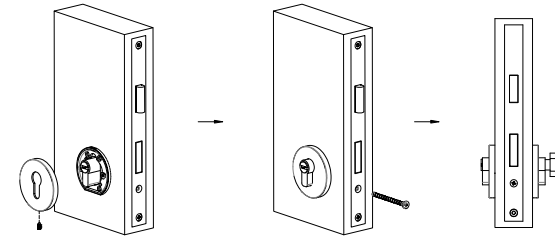
6. On one side, install the inner rose, adjust the position and stabilize with the M4x28 connecting screws.



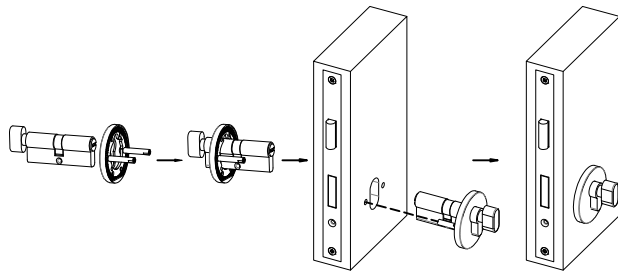
3. Install M4*10 connecting screws and $\phi 6 \times M4 \times 35$ studs through the inner rose.



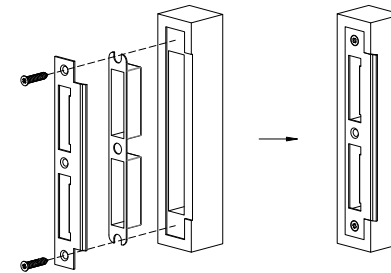
4. Connect inner rose with the escutcheon, use the $\phi 2$ Allen Wrench to fasten the M4*6 Allen screws.



7. Attach the escutcheon to the inner rose, use the $\phi 2$ Allen Wrench to fasten the M4x6 Allen screws, then install the cylinder screws.



5. Insert the escutcheon through the cylinder, then insert the cylinder to the mortise.



8. Place the striker plate on the door jamb ensuring it is correctly located relative to the mortise. Mark this position, then chisel and drill out the striker cutout.