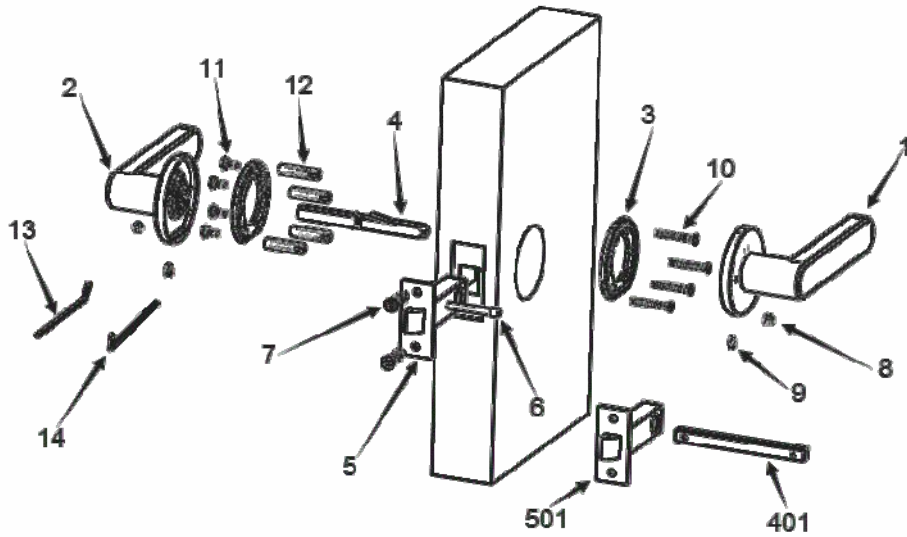


Mucheln PASSAGE and PRIVACY 63mm: Installation

1. Structure Diagram

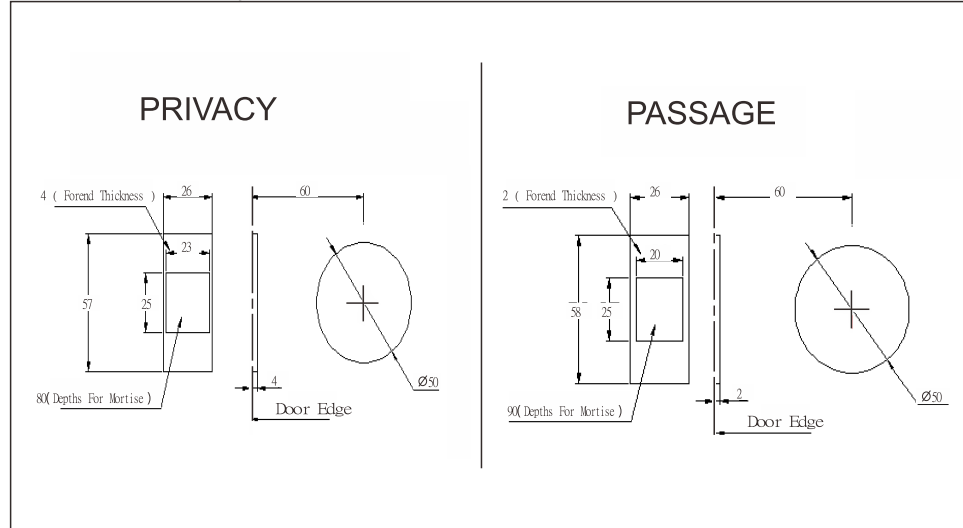


2. Accessories List

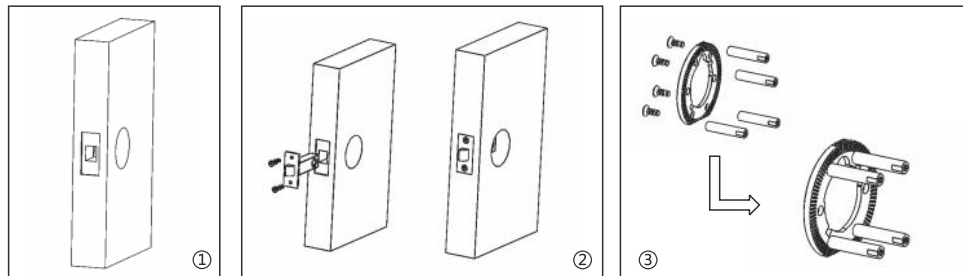
No.	Name	Specification	Qty(pcs)	Accessories
1	Door Handle(left)	MLN Fitting System	1	
2	Door Handle(right)	MLN Fitting System	1	
3	Spring Mechanism	63mm inner rose	2	
4	Spindle	8*8*100 Linkage Spindle	1	PRIVACY
401	Spindle	8*8*100, 2 pieces spindles	1	PASSAGE
5	Mortise	Privacy Latch	1	PRIVACY
501	Mortise	Passage Latch	1	PASSAGE
6	Privacy Pin		1	PRIVACY
7	Wood Screws	M4*20	2	
8	Allen Screws	M6*8	2	
9	Allen Screws	M4*6	2	
10	Flat Head Screws	M4*25	4	Screw Packages
11	Flat Head Screws	M4*10	4	Screw Packages
12	Studs/ Screw Jacket	φ6*M4*30	4	Screw Packages
13	Allen Wrench	3mm	1	Screw Packages
14	Allen Wrench	2mm	1	Screw Packages

Suitable For Door Thickness: 32mm-50mm

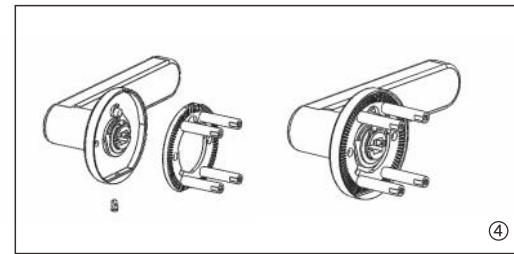
3. Installation Specification



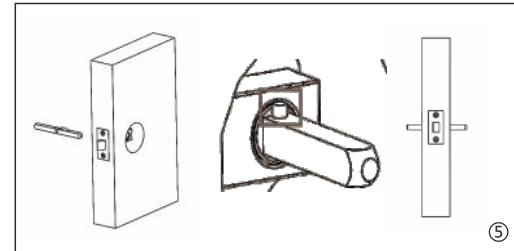
4. Installation Instruction



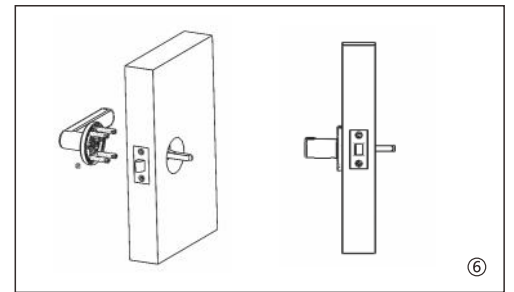
- ①. Follow the Installation Specification and drill the holes for the mortise and door handles.
- ②. Install the latch with the screws
- ③. Install the flat head screws and screw jackets through the inner rose



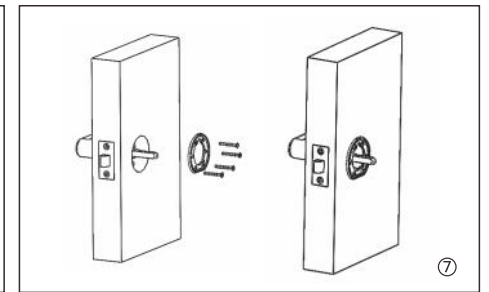
- ④. Insert the inner rose into the handle rose and stabilize them with M4*6 Allen screws.



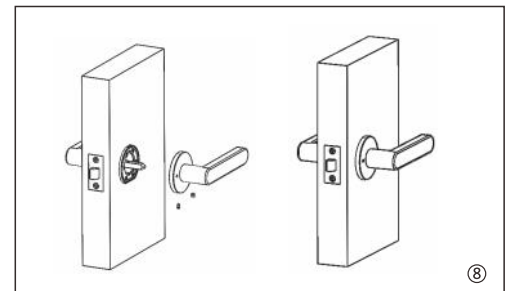
- ⑤. For the PRIVACY handle, there is a button on the spindle, press down the button and put the spindle through the latch so you cannot pull the spindle out. For the Passage function, there are 2 spindles you can use depending on the thickness of the door.



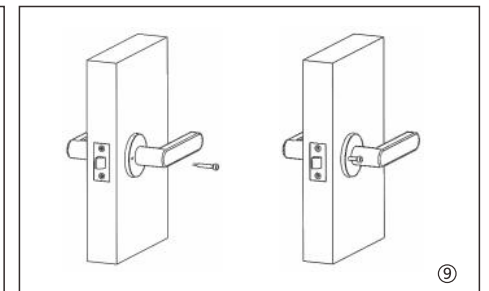
- ⑥. Place the left door handle onto the spindle and adjust the position and stabilize it with the M6*8 Allen screws



- ⑦. On the right side, install the inner rose, adjusting the position. Affix with the connecting screws



- ⑧. Install the right door handle, stabilizing the spindle and rosette with Allen screws.



- ⑨. Install the privacy pin (Privacy Handle Only).