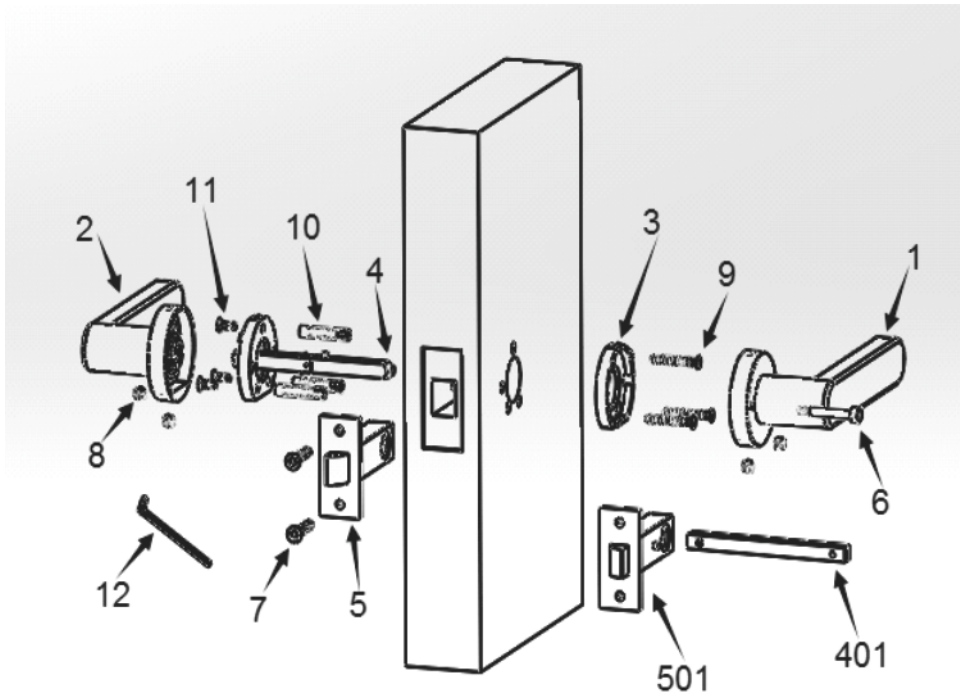


Mücheln PASSAGE and 52mm PRIVACY Installation

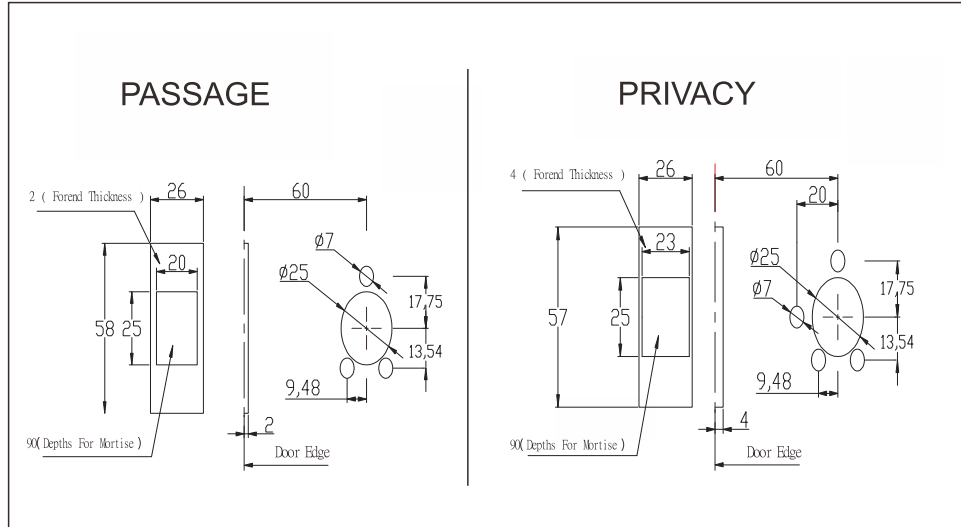
1. Structure Diagram



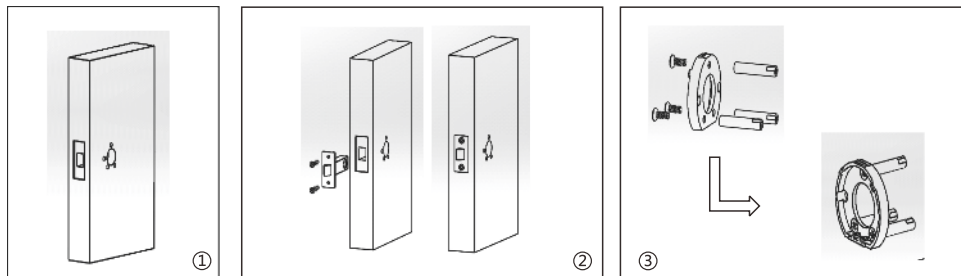
2. Accessories List

No.	Name	Specification	Qty(pcs)	Accessories
1	Door Handle(left)	MLN Fitting System	1	
2	Door Handle(right)	MLN Fitting System	1	
3	Spring Mechanism	Passage or Privacy Inner Rose	2	
4	Linkage Spindle	8*8*100	1	PRIVACY
401	Spindle	8*8*100, 2 spindles	1	PASSAGE
5	Mortise	Privacy Latch 60mm	1	PRIVACY
501	Mortise	Passage Latch 60mm	1	PASSAGE
6	Privacy Pin		1	PRIVACY
7	Wood Screws	M4*20	2	
8	Allen Screws	M6*8	4	
9	Flat Head Screws	M4*25	3	Screw Packages
10	Studs/ Screw Jacket	φ6*M4*30	3	Screw Packages
11	Flat Head Screws	M4*10	3	Screw Packages
12	Allen Wrench	3mm	1	Screw Packages
Suitable For Door Thickness:32mm-50mm				

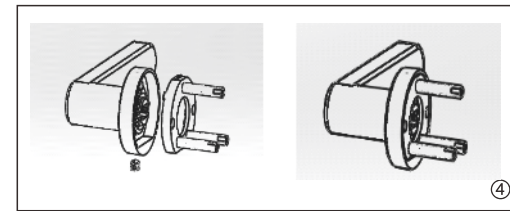
3. Installation Specification



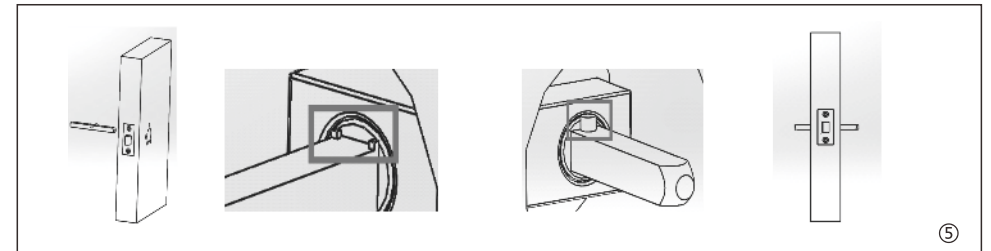
4. Installation Instruction



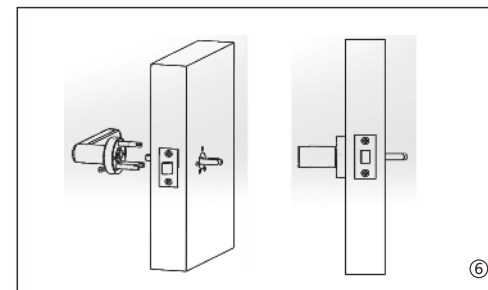
- ①. Follow the Installation Specification and drill the holes for the mortise and door handles.
- ②. Install the latch with the screws
- ③. Install the flat head screws and screw jackets through the inner rose



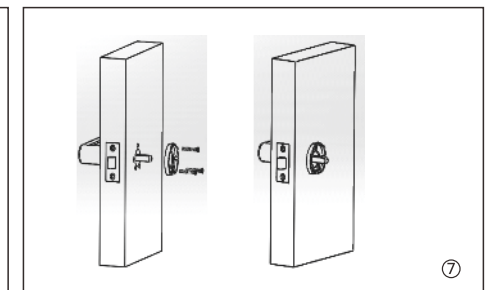
- ④. Insert the inner rose into the handle rose and stabilize them with Allen screws.



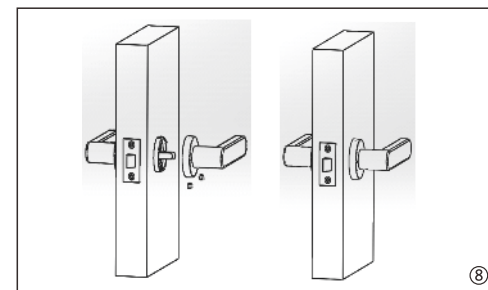
- ⑤. For the PRIVACY handles function, press down the button on the spindle and insert the spindle through the latch so the spindle cannot be pulled out. For PASSAGE handles, there are 2 spindles. Insert one of them (depending on your door thickness) through the latch, and adjust the position according to the thickness of the door.



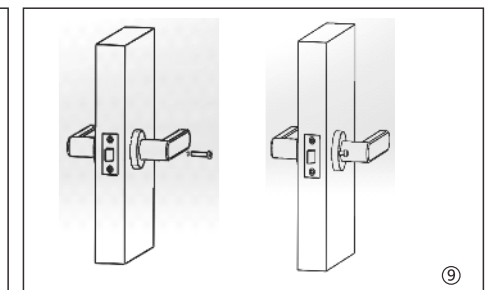
- ⑥. Place the left door handle onto the spindle and adjust the position and stabilize it with the Allen screws



- ⑦. On the right side, install the inner rose, adjusting the position. Affix with the connecting screws



- ⑧. Install the right door handle, stabilizing the spindle and rosette with Allen screws.



- ⑨. Install the privacy pin.