

Analyzed by : Dr. Robert S. Pappas  
 Analyzed : 7/19/2018 10:10:23 PM  
 Sample Type : Essential Oil  
 Sample Name : Lavender - Edens Garden  
 Sample ID : AH06GI  
 Injection Volume : 0.10  
 Instrument ID : GC-3

Sample Information

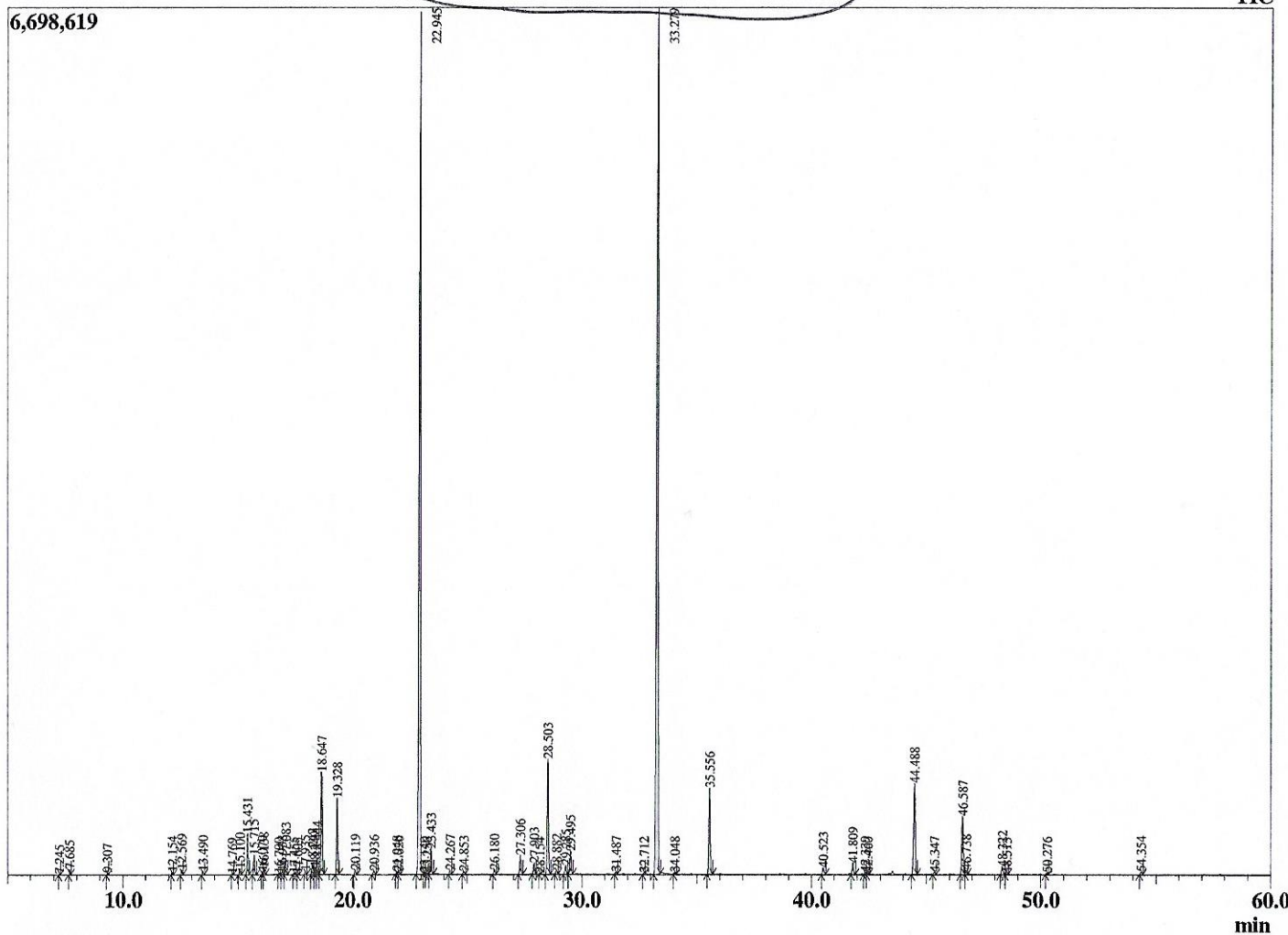
GC/MS Report



Peak Report TIC

This report is not valid after 1 year of the report date.

Chromatogram Lavender - Edens Garden



R.Time	Name	Area%
7.245	Butyl acetate	0.01
7.685	Hexyl methyl ether	0.12
9.307	n-Hexanol	0.05
12.154	alpha-Thujene	0.08
12.569	alpha-Pinene	0.14
13.490	Camphene	0.10
14.769	Sabinene	0.03
15.100	1-Octen-3-ol	0.20
15.431	3-Octanone	1.27
15.715	Myrcene	0.62
16.079	Butyl butyrate	0.09
16.138	3-Octanol	0.21
16.790	alpha-Phellandrene	0.03
16.938	delta-3-Carene	0.10
17.083	Hexyl acetate	0.53
17.455	alpha-Terpinene	0.05
17.605	ortho-Cymene	0.03
17.935	para-Cymene	0.11
18.242	Limonene	0.33
18.349	beta-Phellandrene	0.25
18.444	1,8-Cineole	0.59
18.647	cis-beta-Ocimene	3.44
19.328	trans-beta-Ocimene	2.55
20.119	gamma-Terpinene	0.15
20.936	cis-Linalool oxide (furanoid)	0.15
21.948	Terpinolene	0.09
22.020	trans-Linalool oxide (furanoid)	0.08
22.945	Linalool	33.25
23.140	Hotrienol	0.05
23.256	Hexyl propionate	0.05
23.433	1-Octen-3-yl acetate	0.91
24.267	3-Octyl acetate	0.14
24.853	allo-Ocimene	0.09
26.180	Camphor	0.17
27.306	Lavandulol	0.72
27.903	Borneol	0.41
28.154	Undeca-1,3,5-triene	0.02
28.503	Terpinen-4-ol	4.44
28.882	Cryptone	0.16
29.285	Hexyl butyrate	0.38
29.495	alpha-Terpineol	0.88
31.487	Nerol	0.08
32.712	Cuminal	0.05
33.279	Linalyl acetate	35.21
34.048	Unidentified	0.05
35.556	Lavandulyl acetate	3.43
40.523	Neryl acetate	0.27
41.809	Geranyl acetate	0.46
42.339	Hexyl hexanoate	0.07
42.460	7-epi-Sesquithujene	0.05
44.488	beta-Caryophyllene	4.06
45.347	trans-alpha-Bergamotene	0.08
46.587	trans-beta-Farnesene	2.43
46.738	alpha-Humulene	0.15
48.322	Germacrene D	0.33
48.513	Farnesene isomer	0.04
50.276	gamma-Cadinene	0.05
54.354	Caryophyllene oxide	0.12

Comments:

The analysis of this Lavender batch sample meets the expected chemical profile for authentic essential oil of *Lavandula angustifolia*. No contamination or adulteration was detected.