

Installation of  
Nolting's  
**Quiltmachine**  
Online Update

Copyright February 24, 2021  
Jim Bagley, GraceWood, Inc  
(Reproduction Prohibited)  
Version 1

# Table of Contents

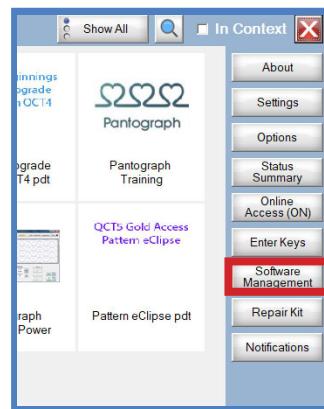
Online Update for Quiltmachine.....	1
New Sewing Machine Models.....	11
Getting connected to the internet.....	14
Troubleshooting.....	16
Firmware Update.....	18

# Remove the USB cable from the tablet. Open Quiltmachine in Simulation Mode

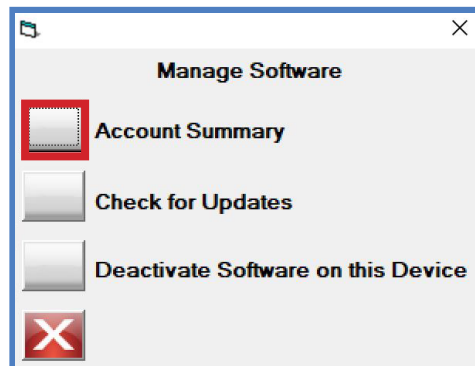
From the home page, select **Help**.



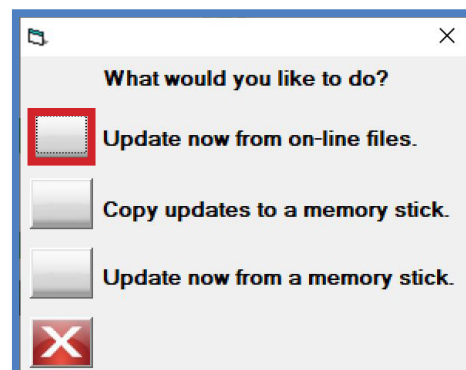
From the **Help Menu** window, press **Software Management**.



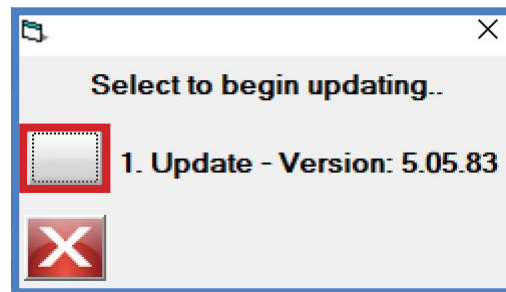
From the **Manage Software** window, touch **Check for Updates**.



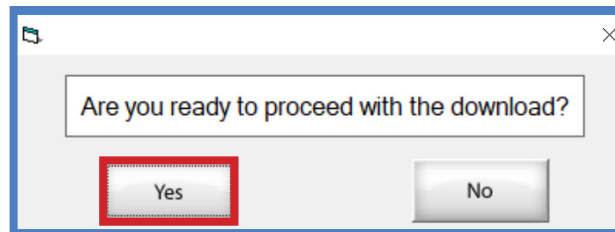
From the **What would you like to do?** window, choose **Update now from on-line files**.



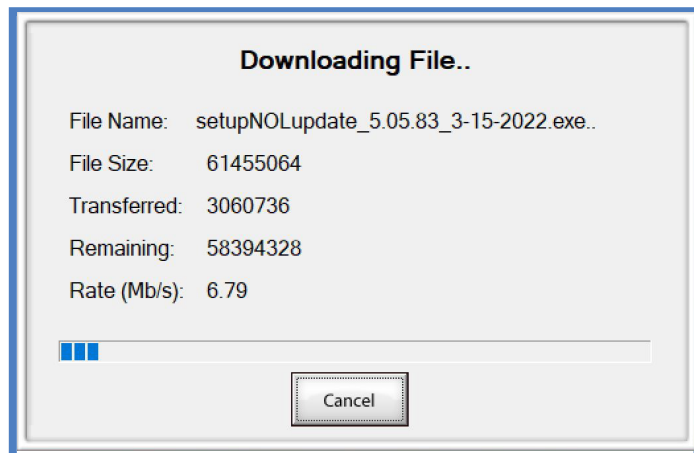
From the **Select to begin updating...**, press **1. Update - Version 5.05.83**



Touch **Yes** when you are ready to download.

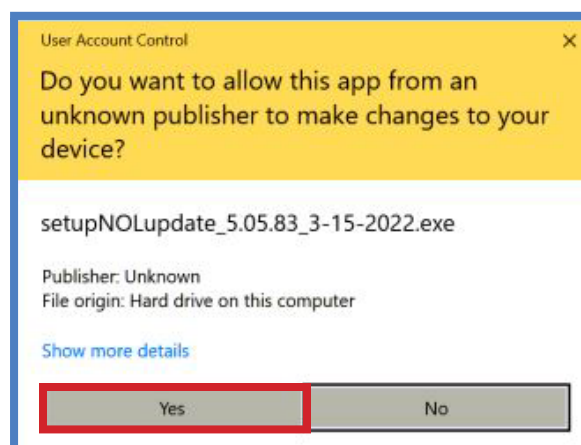


The **Downloading File.** window will automatically close once the file has completed downloading.



**User Account Control** will now prompt you "**Do you want to allow this app from an unknown publisher to make changes to your device?**"

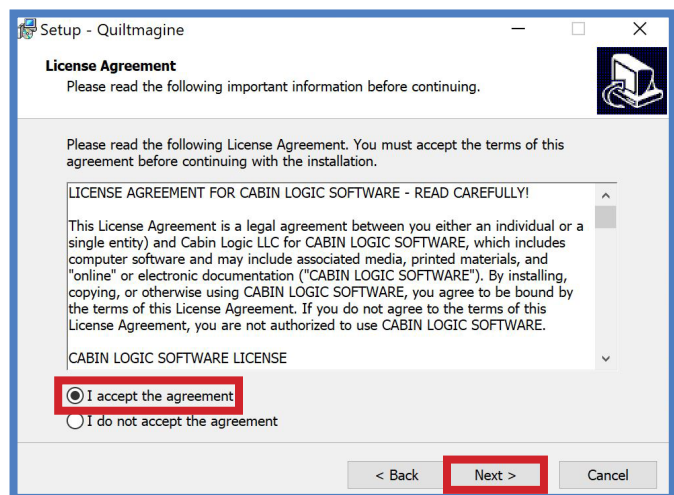
Touch **Yes.**



On the **Welcome to the Quiltmachine Setup Wizard** window, touch **Next >**.



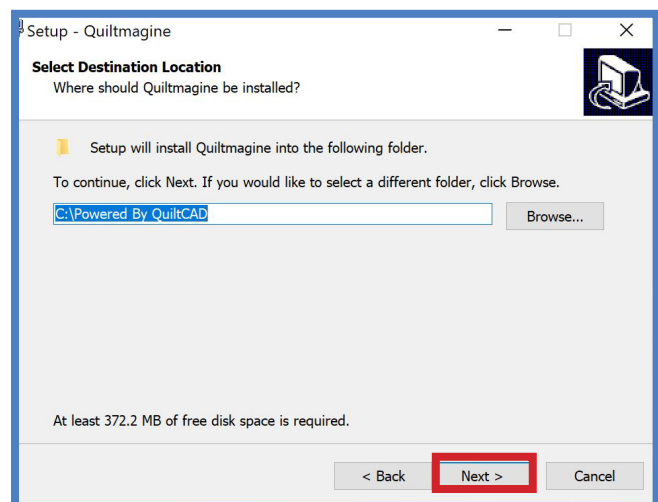
On the **License Agreement** window, press **I accept the agreement** and touch **Next >**.



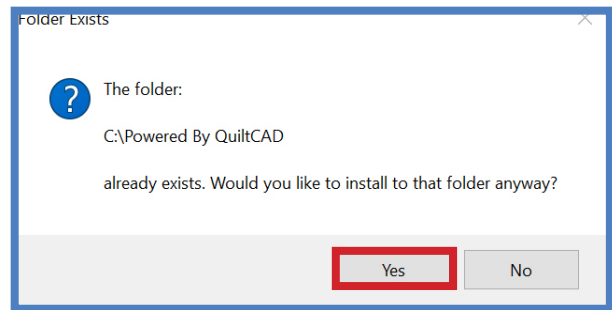
The **Select Destination Location** window will open.

**\* Do not change the default destination location.**

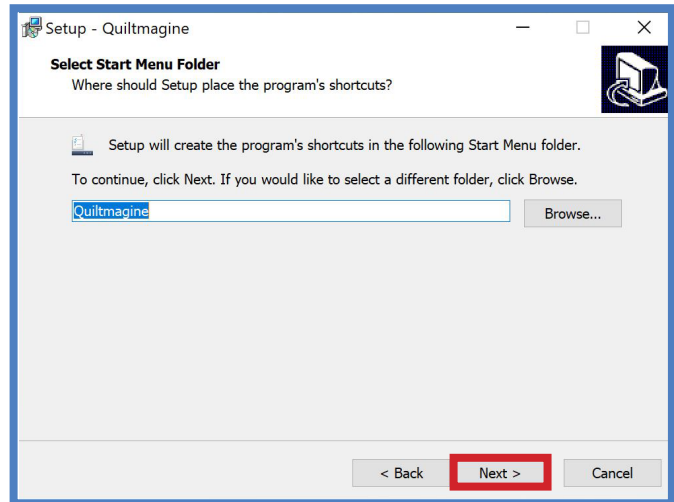
Touch **Next >**.



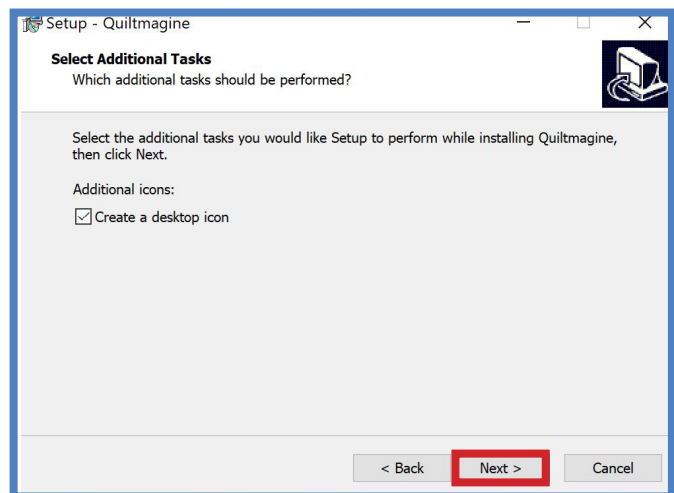
On the **Folder Exists** window, touch **Yes**.



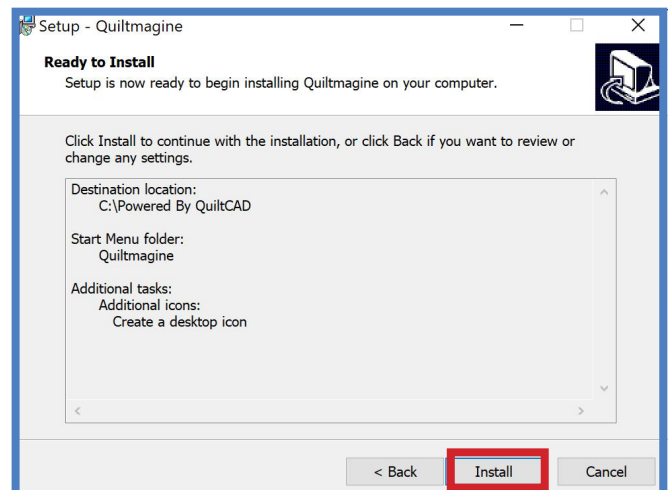
On the **Select Start Menu Folder** window, choose **Next>**.



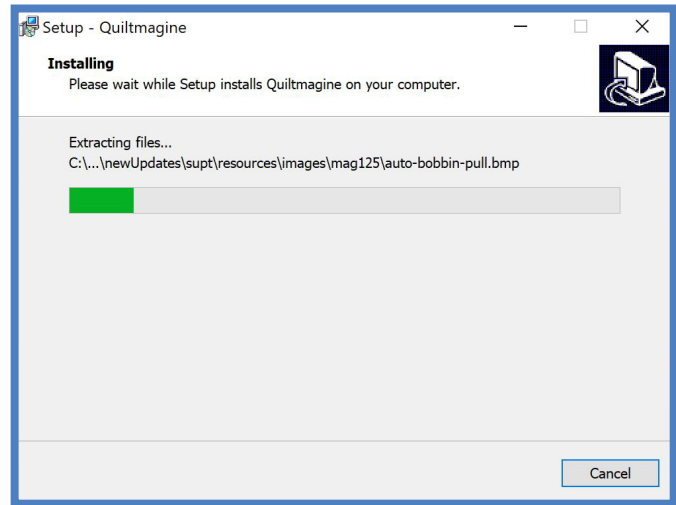
On the **Select Additional Tasks** window, select **Next>**.



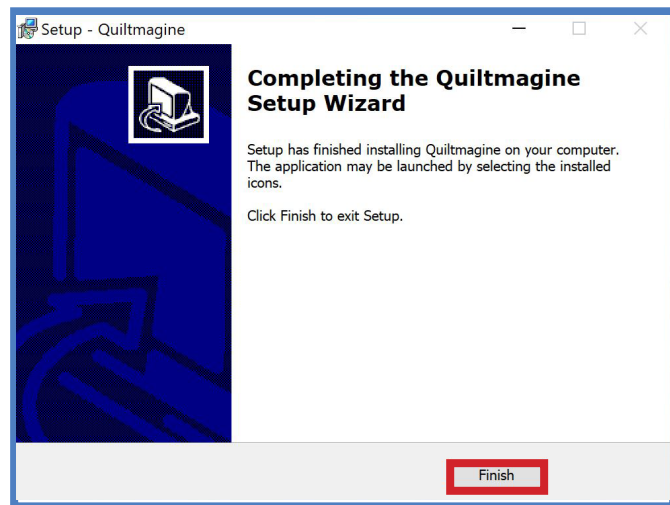
On the **Ready to Install** window, press **Install**.



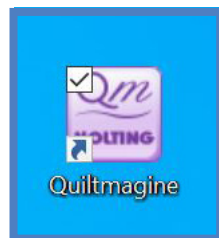
The **Installing** window will automatically close when installing has completed.



On the **Completing the Quiltmachine Setup Wizard** window, touch **Finish**.

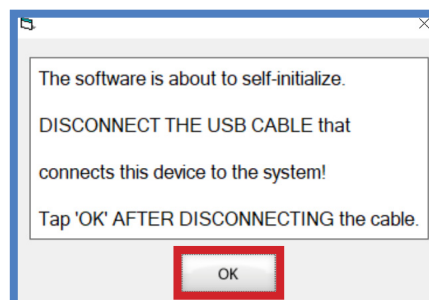


Double tap the **Quiltmachine** icon and the installation of files and directories will complete.



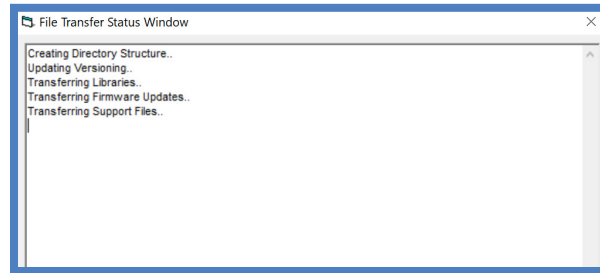
Make sure you unplug your USB cable if this device is connected to your system.

**Tap OK**

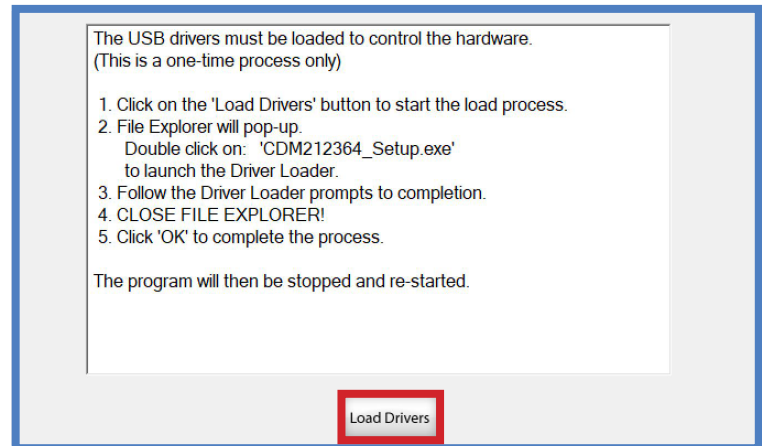


The installation of files and directories will complete.

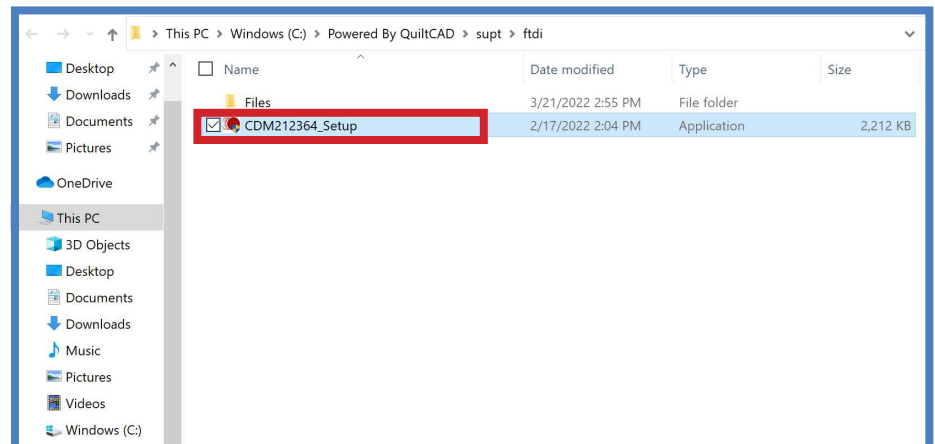
If you get any error on the file transfer you will need to reinstall the update. Refer to page 16.



On the **USB Driver Load** window, press **Load Drivers**.

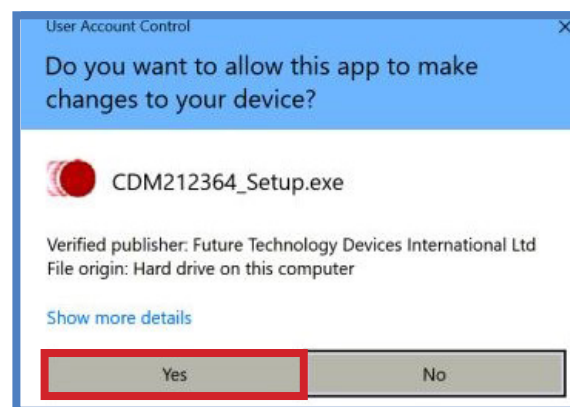


Double tap on the **CDM21364\_Setup** file.



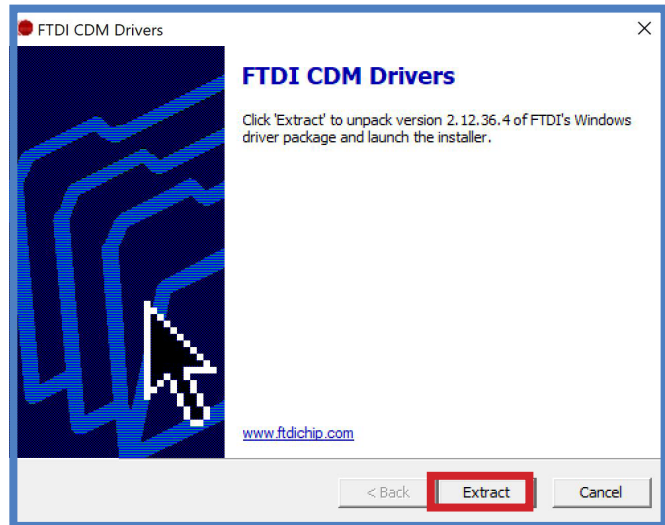
**User Account Control** will now prompt you “**Do you want to allow this app to make changes to your device?**”

Tap on **Yes**.

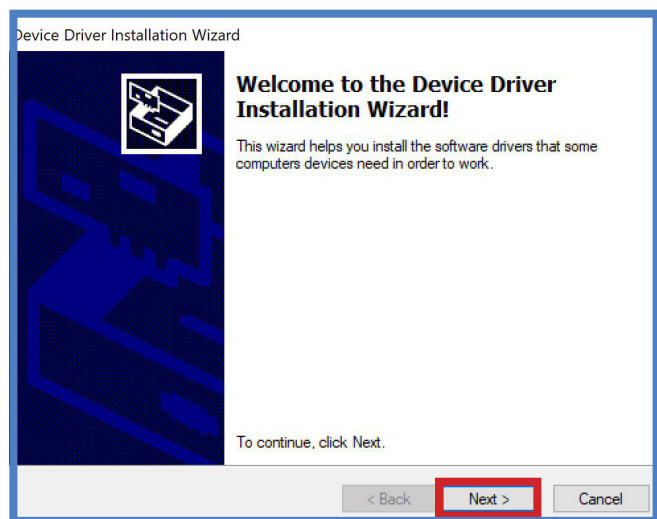




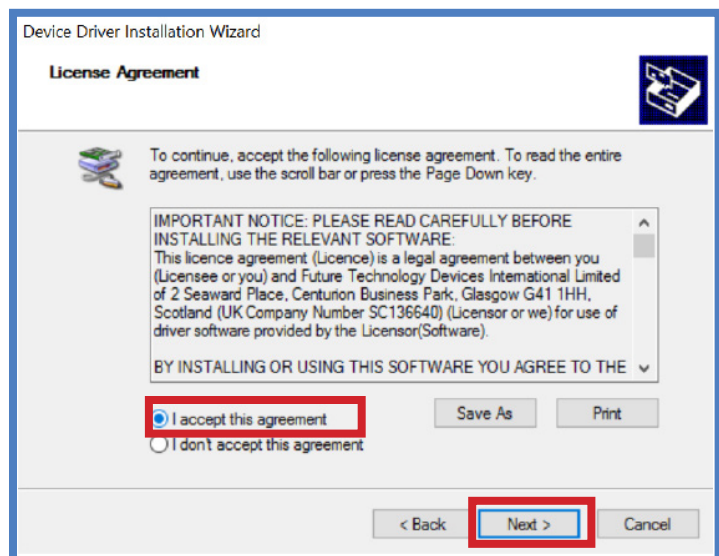
On the **FTDI CDM Drivers** window, touch **Extract**.



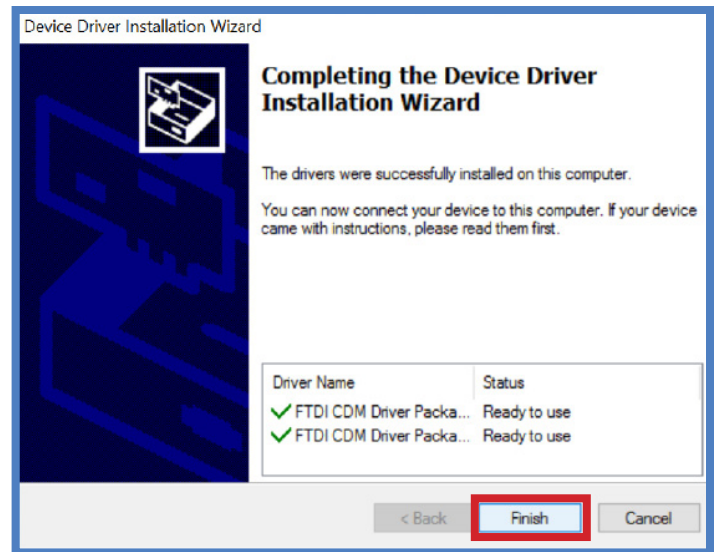
On the **Welcome to the Device Driver Installation Wizard!** window, press **Next>**.



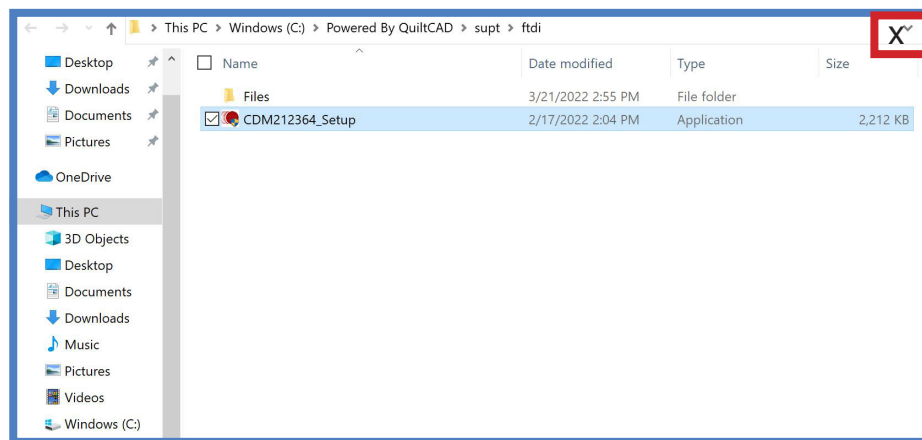
On the **License Agreement** window, choose **I accept this agreement**. Then tap **Next>**.



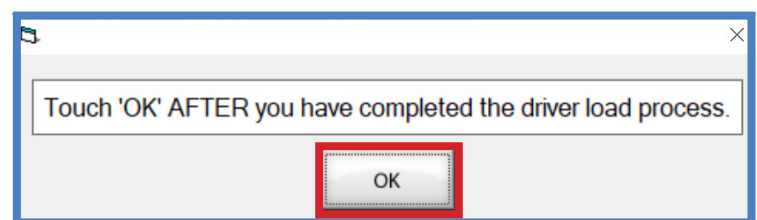
On the **Completing the Device Driver Installation Wizard** window, touch **Finish**.



Tap the **X** in the upper right hand corner of File Explorer to close it.

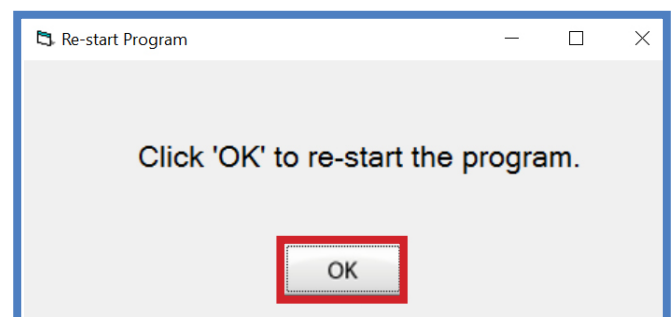


Press **OK**.

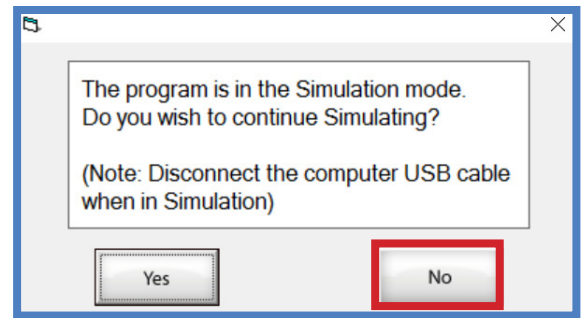


**Plug the USB cable back into your tablet.** Make sure Quiltmagine is powered on.

On the **Re-start Program** window, touch **OK**.

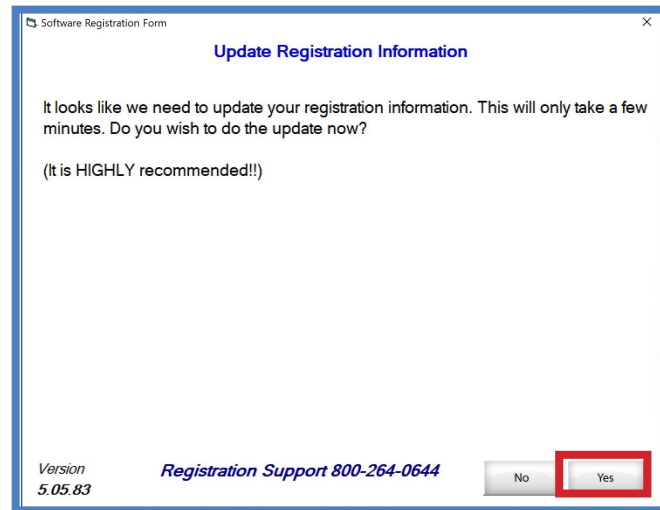


You will be prompted about continuing in Simulation Mode. Touch **No**.



This version of your software is on a new registration process. You may or may Not be asked for additional information. If you do not get asked then the database has all of your information it needs.

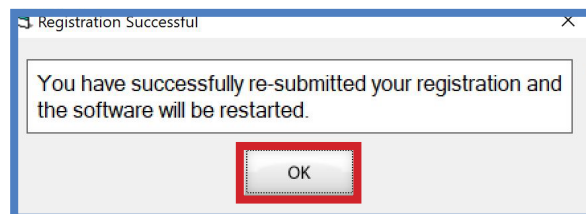
Select Yes



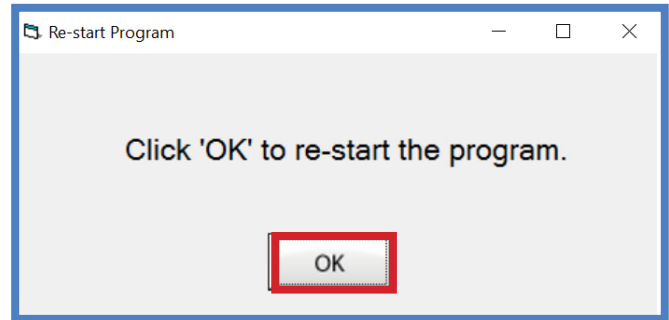
Fill out all of your Information.  
Touch Submit.

A registration summary form titled "Registration Summary - 3001". It prompts the user to "Review your registration information then tap 'Submit'." and shows a status "ACN 000 7153 YMJC". The form includes several input fields: "First Name", "Last Name", "Email" (with "grace@graceframe.com" entered), "Security Question" (a dropdown menu with "What is your mother's maiden name?" selected), "Security Answer", "Mobile Number" (with a note "(To be used for your ID verification)"), "Device Name" (with "DESKTOP-GLTRRQH" entered), "Device ID" (with "HL49" entered), and "Product Keys" (a table with keys like "NOL SJYVG JK7XN 4GD7M", "NOQ", and "Quiltmagine Pro"). At the bottom, there is an "Activation Key" field with the text "JAHSF JRT27 AQ2SL NMSUW 8MH58" and a green "Submit" button highlighted with a red rectangular box.

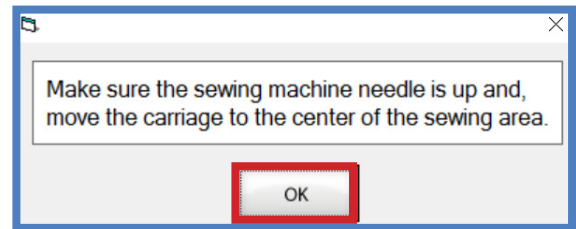
Registration Successfull  
Touch OK.



On the **Re-start Program** window, touch **OK**.



You will be prompted to make sure the needle is up and to center your carriage. After you have centered your machine, touch **OK**.



You should be back on the home screen of the program and showing that you are connected.

## Congratulations!

You have updated your software. We hope you enjoy your software.  
Please practice!

## Nolting has new Sew Models

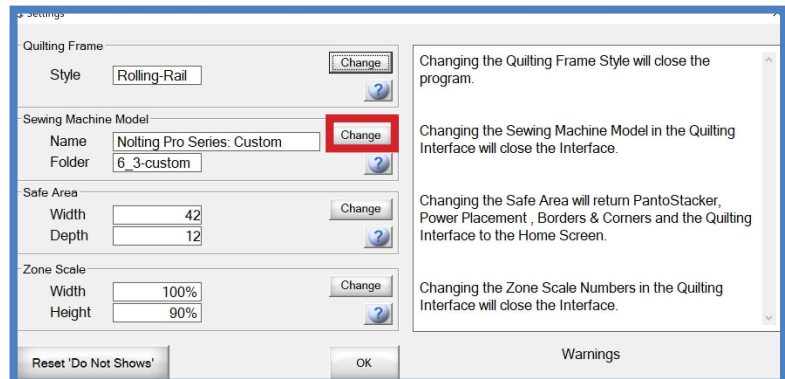
From the home page, select **Help**.



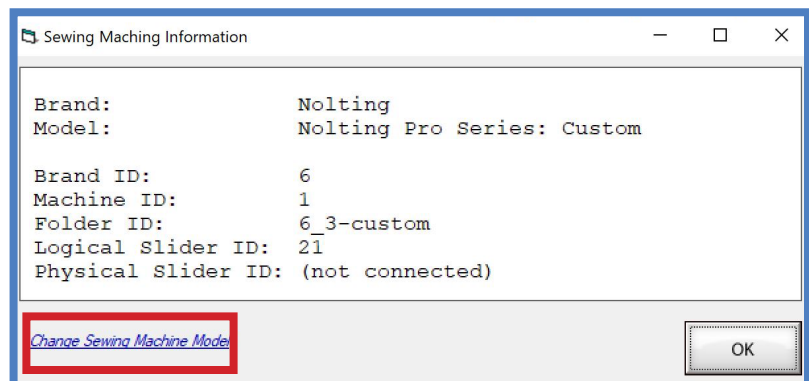
From the **Help Menu** window, press **Software Management**.



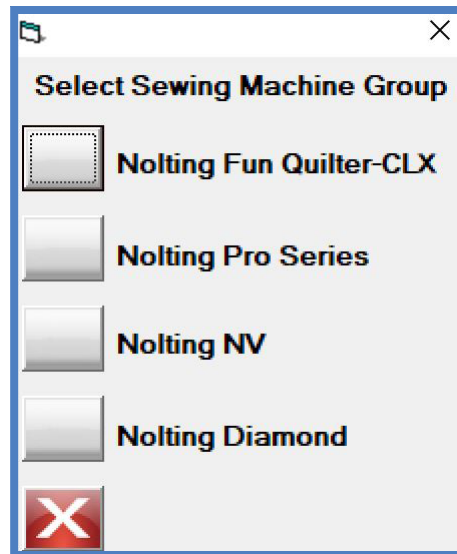
From the **Settings** window, touch **change**.



From the **Sewing Machine Information** window, touch **Change Sewing Machine Model**.



This is the new look for Selecting your Sewing Machine.



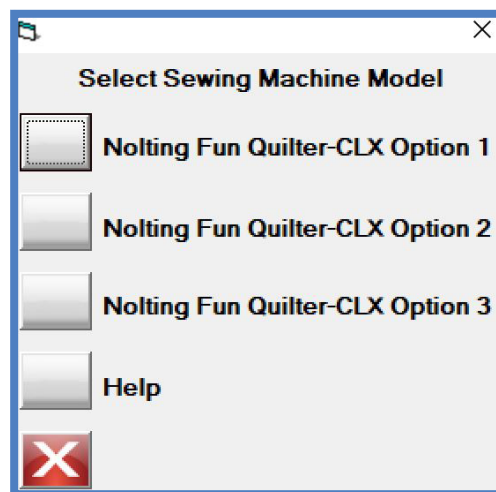
### Fun Quilter-CLX

You have 3 options with different parameters.

Option 1 are the parameters that you have been using.

To decide which option works best for you, select another option and test the stitching on some practice fabric using a pattern with points and corners or the pattern you are going to use next.

Please don't test the different options on a real quilt.



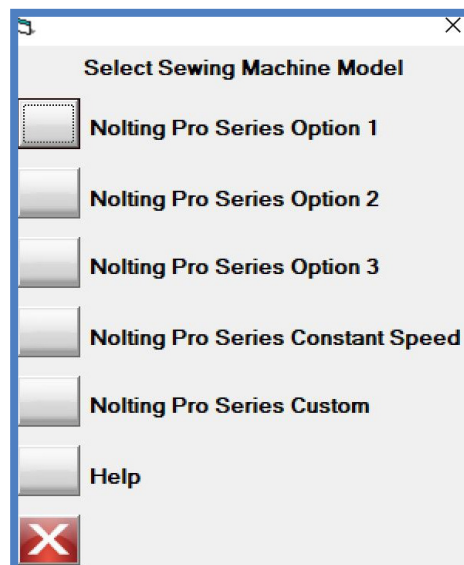
### Pro Series Models

You have 3 options with different parameters. There is a setting for putting your machine in Constant Speed with Motion Detection. There are Instructions in "help" on how to put your machine in the constant speed.

With this update the settings that you have been using will be on the Nolting Pro series custom setting.

To decide which option works best for you select another option and test the stitching on some practice fabric using a pattern with points and corners or the pattern you are going to use next.

Please don't test the different options on a real quilt.



# Getting Connected to the Internet

Follow the instructions below if you do not know how to connect your tablet to the Internet

To connect to the Internet, swipe in from the right on your tablet. Touch **All Settings**.



Press **Network & Internet**.



Network & Internet  
Wi-Fi, airplane mode, VPN


## Status

### Network status



**Not connected**

You aren't connected to any networks.

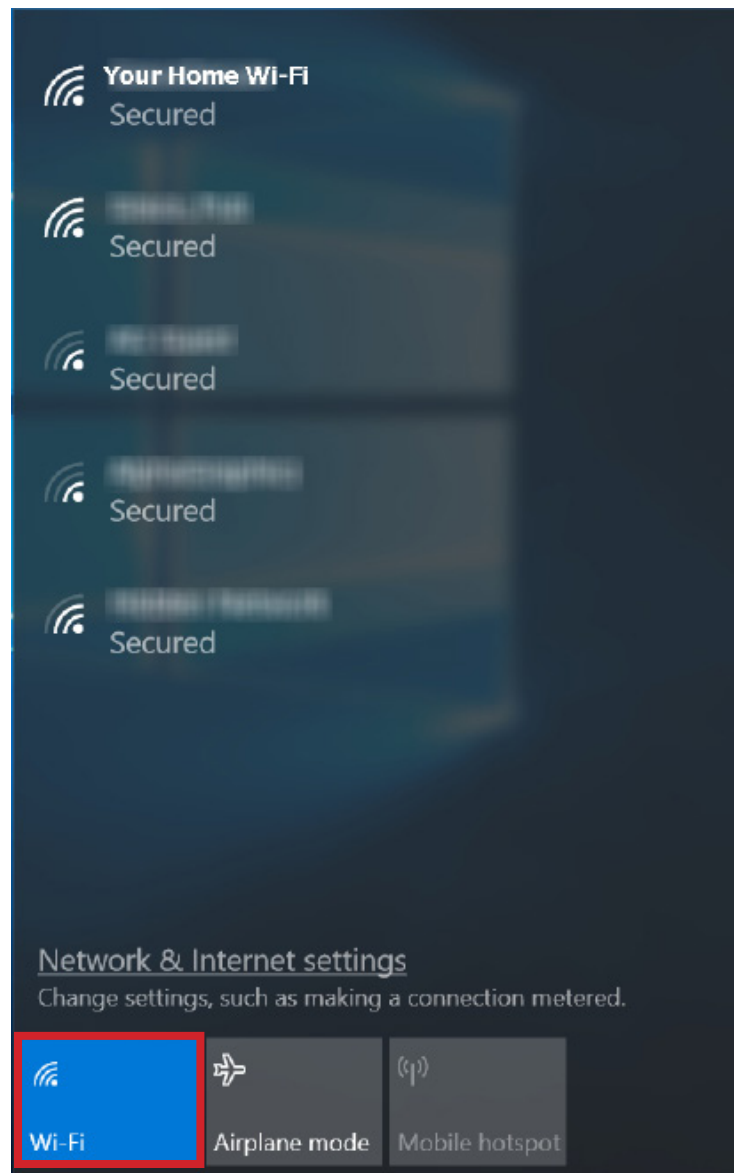
 Troubleshoot

[Show available networks](#)

Under Status, tap on the link that says **Show available networks**.

The list of available Wi-Fi networks will show up. Locate your local Wi-Fi connection & touch it. If you have never connected to this network, it will prompt you for your Wi-Fi password. Enter your password and press **Connect**.

If your Wi-Fi button is greyed out, touch the button to enable the Wi-Fi.





# Troubleshooting

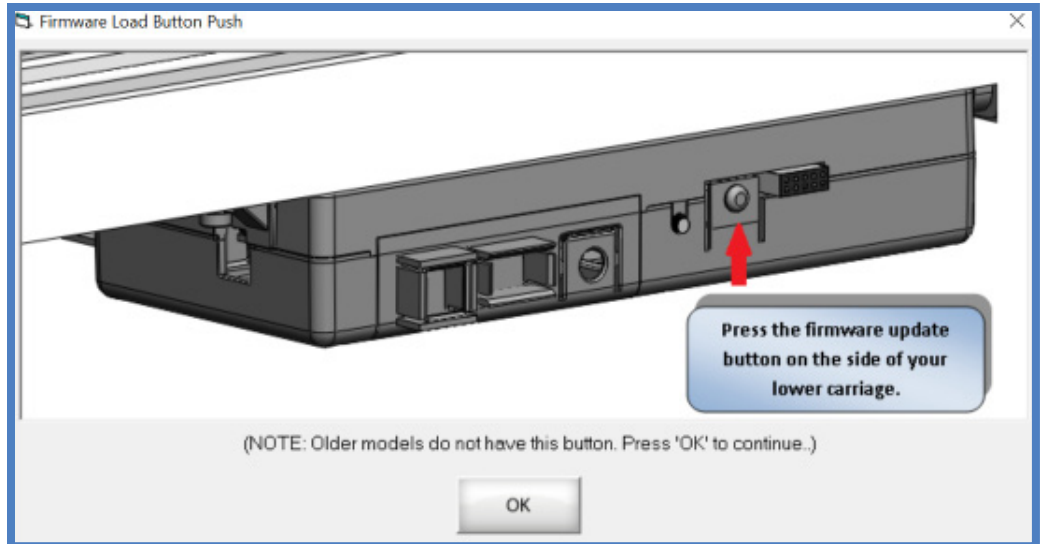
## Downloading Update Error:

If you get an error while **downloading** the update, it could be your internet connection or that Windows Update is downloading to your tablet. **Reboot your tablet and try again.**

## Firmware Update:

If this picture keeps coming up while trying to update the firmware:

1. Make sure you are pushing the firmware button on QuiltMotion and then touching the **OK** button on your tablet screen within 20 seconds.
2. If the picture is still coming up, close the program and power everything off. Then power everything back on and try again.



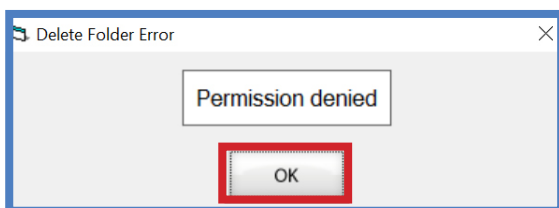
## Permission denied:

Depending on the version of Windows you are running, it is possible you may encounter a permission denied error. Some cases are a Virus Protection program or Quiltmachine is opened a couple of times. You are not a admin of the device.

Reboot Tablet.

Turn off any Virus Protection program.

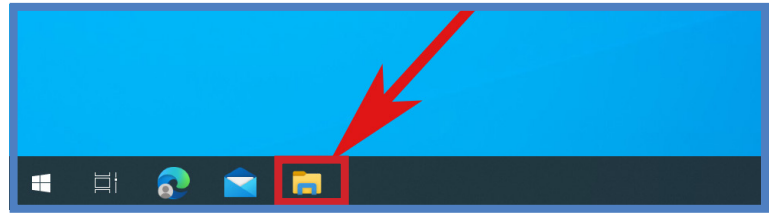
Re install update. Update location is on page 16.



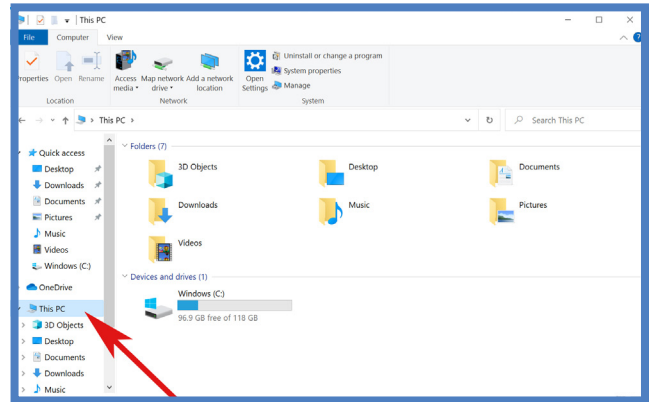
If you do get a message like this, touch **OK**. This should close the program installer.

## Reinstall the Update

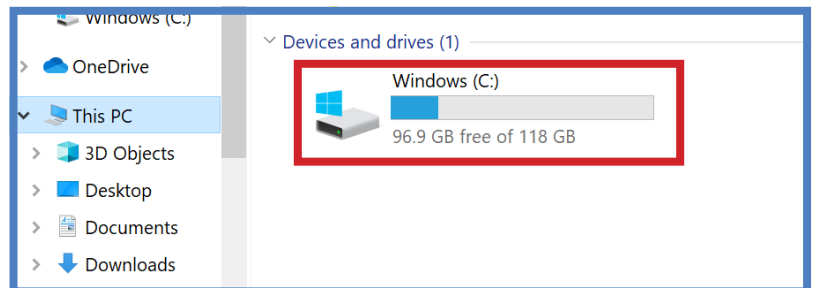
To restart the update, touch the File Explorer icon on your taskbar:



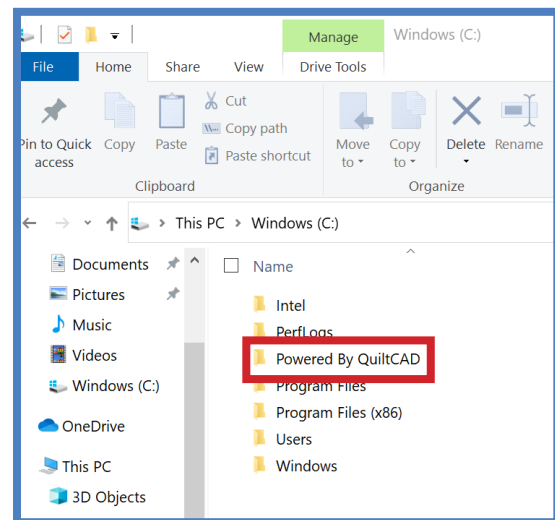
This will open **File Explorer**. Locate **This PC** and double tap.



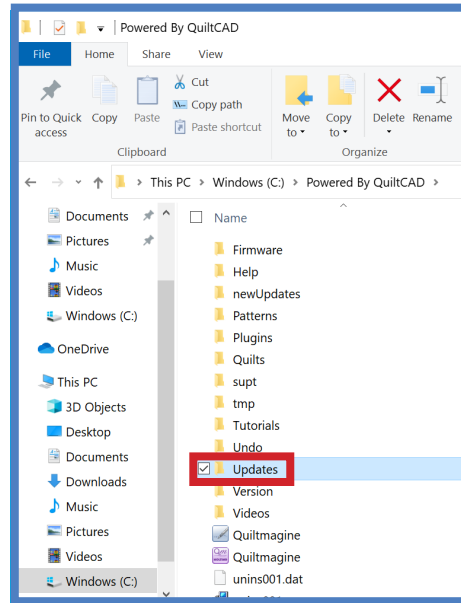
Locate the **(C:)** Drive and double tap it.



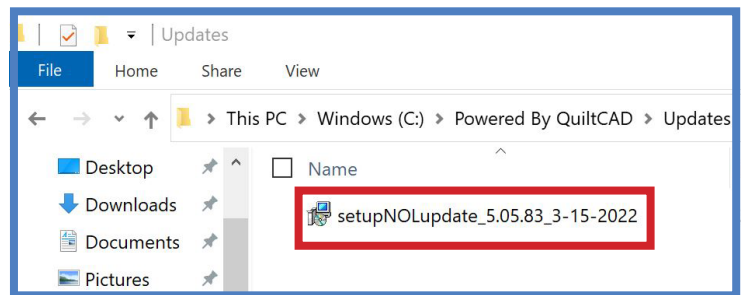
Double tap **Powered By QuiltCAD**.



Locate the **Updates** directory, and double tap it.



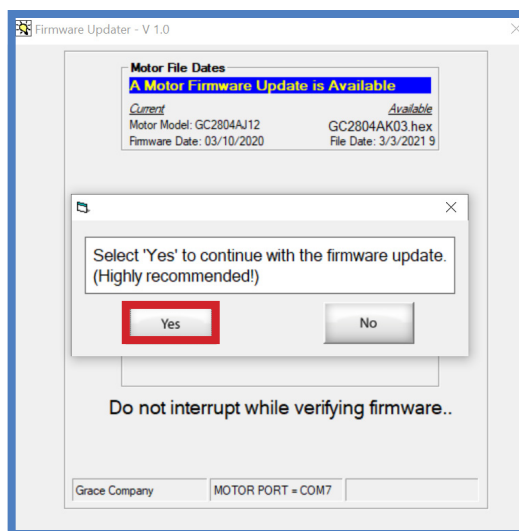
In **Updates**, locate the **setupNOLupdate\_5.05.83\_3-15-2022\_3-3-2021**



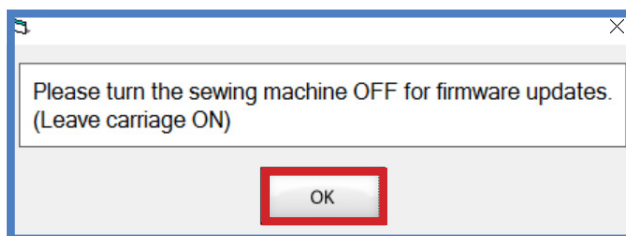
## If you are asked to do a firmware update

### Completing the Motor Firmware Update

Choose **Yes** to continue with the firmware update.

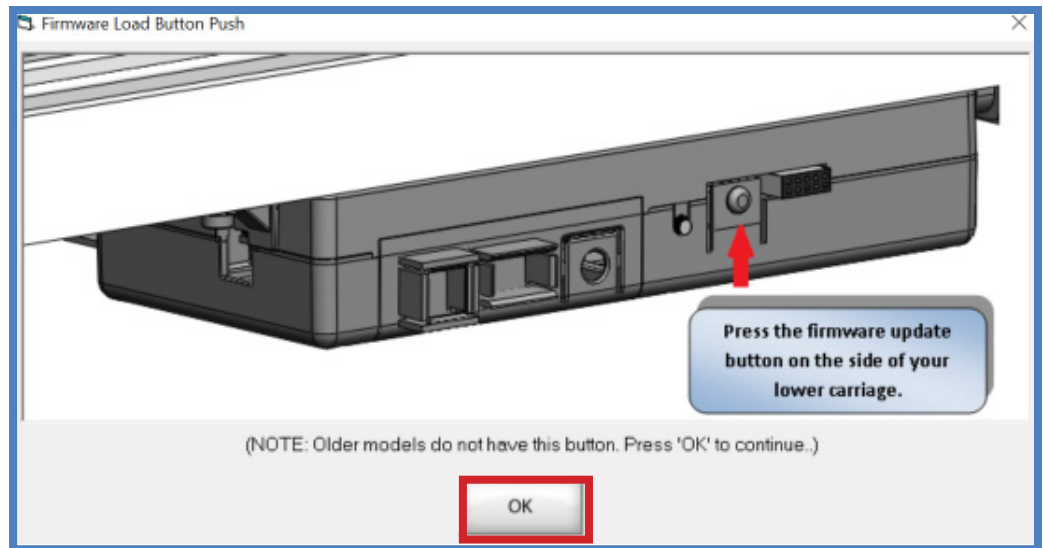


You will now be prompted to turn the sewing machine OFF. **Once the sewing machine is turned OFF**, touch **OK** to continue with the firmware update.

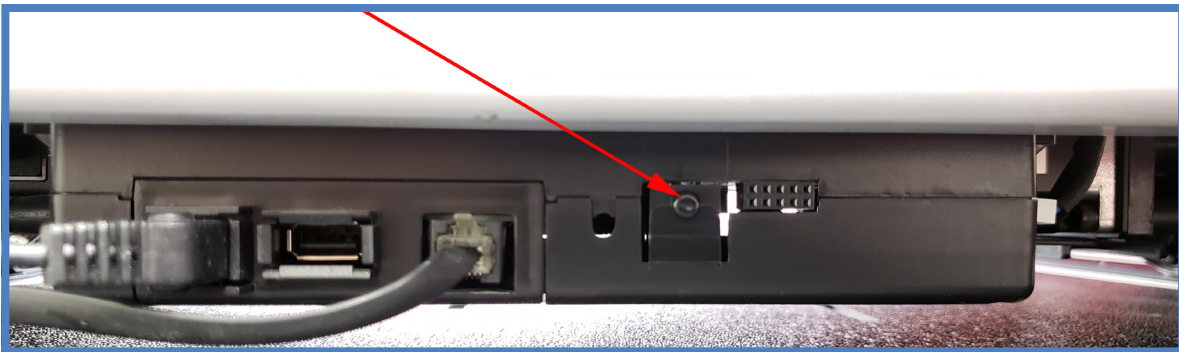


The **Firmware Load Button Push** window will appear.

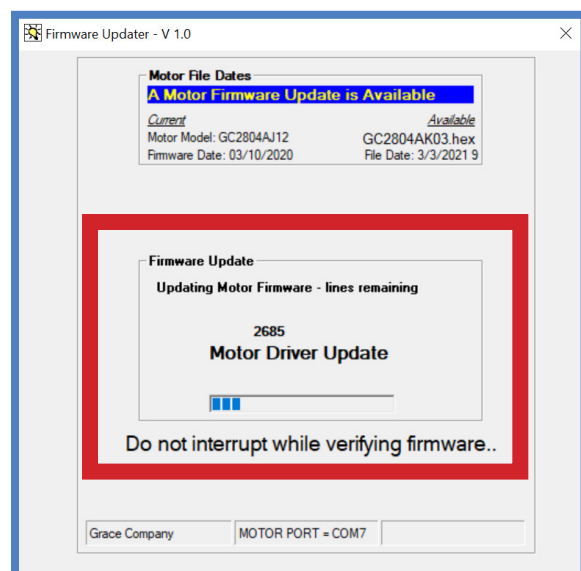
Push in the **firmware update button** on your bottom carriage two times. You will have 20 seconds to touch **OK** on your tablet screen.



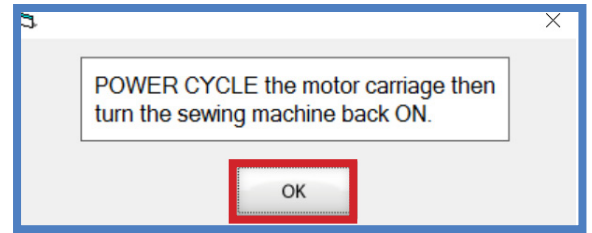
This is how the QuiltMotion will look under your carriage.



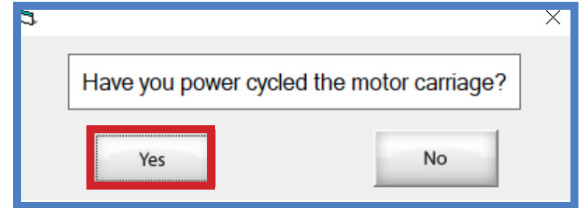
The moment you see these numbers counting down showing the lines, **move away from the frame while this process runs. Do not touch the frame, carriage or tablet while it is completing this update.**



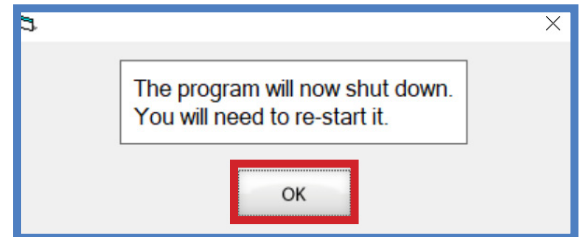
You will now be prompted to **POWER CYCLE the motor carriage then turn the sewing machine back ON**. Turn off the QuiltMotion by using the power strip switch attached to the back of your carriage. Wait 30 seconds, then power back on. Touch **OK**.



Once you have completed power cycling the carriage, press **Yes**.



You will now be prompted **The program will now shut down. You will need to re-start it**. Touch **OK**.



If you have any questions or run into any problems, please give us a call at  
**1-800-264-0644**  
Select **Technical Support**.

