



817 Mohr Ave ♦ Waterford, WI 53105
 (800) 343-8671 ♦ CustomerService@QuiltersRule.com
 www.QuiltersRule.com

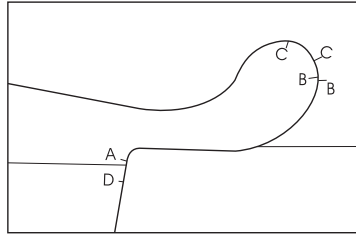
We're more than just rulers!

Quilter's Rule™

Quilter's Rule is proud to present our newest tool.

Feather Tool

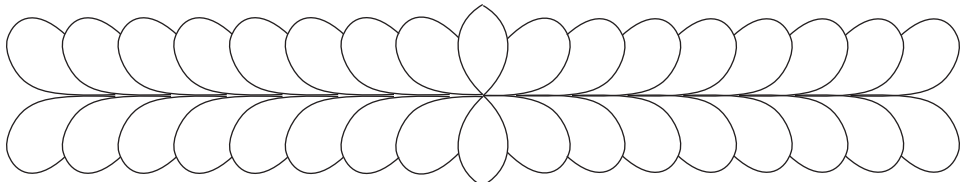
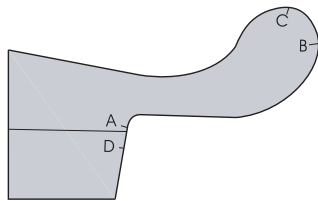
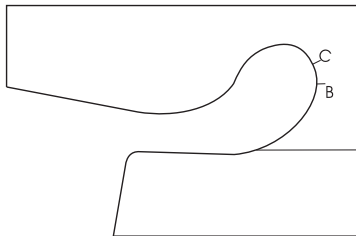
Design by Nancy Johnston



What the Feather Tool can do:

- * **Straight line single sided feather.**
- * **Straight line double sided feather.**
- * **Curved line single sided feather.**
- * **Curved line double sided feather.**
- * **Feathered wreath - inside and outside both sides or one side only.**

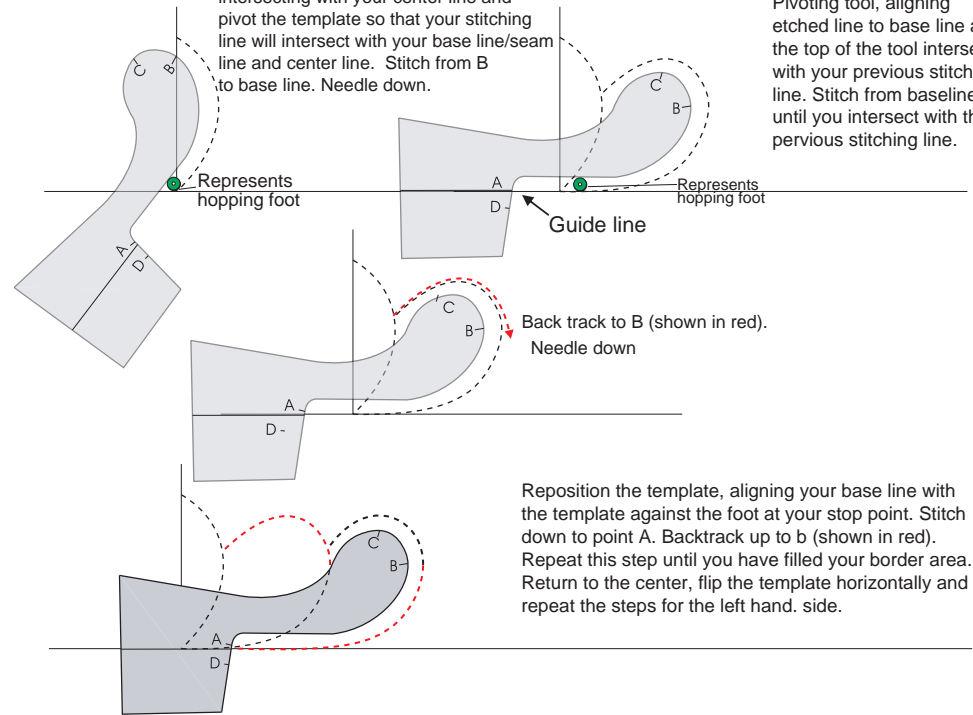
Two Tools - Two Feather Sizes



Mark in a base line (straight line) or use the seam line.
 Mark your center line.

Position the template with B at the top intersecting with your center line and pivot the template so that your stitching line will intersect with your base line/seam line and center line. Stitch from B to base line. Needle down.

Pivoting tool, aligning etched line to base line and the top of the tool intersects with your previous stitching line. Stitch from baseline until you intersect with the previous stitching line.



Represents hopping foot

Represents hopping foot

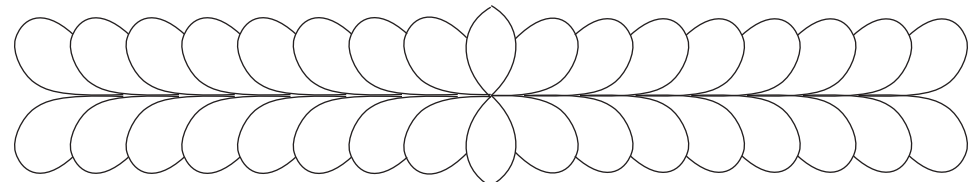
Guide line

Back track to B (shown in red).
 Needle down

Reposition the template, aligning your base line with the template against the foot at your stop point. Stitch down to point A. Backtrack up to b (shown in red). Repeat this step until you have filled your border area. Return to the center, flip the template horizontally and repeat the steps for the left hand side.

For a larger border/double sided feather flip the tool vertically
 Repeating all of the steps on the other side of your base line.

Red stitching lines indicate Backtracking



Relax and have fun playing!