

Portable Oxygen Concentrator

FYY-03

User Manual



CONTENTS

1 CONTRAINDICATIONS, PRECAUTIONS, WARNINGS AND SUGGESTIVE EXPLANATIONS

2 SUMMARY

3 PRODUCT DESCRIPTION

4 INSTALLATION INSTRUCTIONS

5 HANDLING INSTRUCTION

6 CARE AND MAINTENANCE

7 PARTS LIST

8 AFTER-SALES SERVICE

1 CONTRAINDICATIONS, PRECAUTIONS, WARNINGS AND SUGGESTIVE EXPLANATIONS

CONTRAINDICATIONS

Oxygen poisoning and oxygen allergy patients are prohibited.

PRECAUTIONS

Before installation

- ① This machine is forbidden to lie upside down!
- ② Avoid smog and environmental pollution!
- ③ Please use safe and qualified sockets and wiring boards with safety electrician certification!
- ④ When charging, the input voltage should meet the input index of the adapter.
- ⑤ Non-professionals should not open the chassis!

Placement place

- ① This machine should not be placed in the following environments: near heat sources and bright and dark fire sources, in humid, too high or too low temperature environments (such as bathrooms, saunas, etc.).
- ② Do not put sundries and water and oil containers on the casing, and do not put any sundries at the bottom of the machine.
- ③ Don't block the air inlet and outlet of the equipment, so as to prevent the shutdown or oxygen concentration from dropping due to the high temperature caused by the blockage of the air inlet and outlet.
- ④ Please do not use this machine in a closed space or in an environment with oil smoke.

In use

- ① After starting, use it with the oxygen tube. Press the "switch" button in the shutdown state to enter the startup state. Press the "Continuous" button to switch between continuous high and continuous low. Press the "Breathe" button to switch between low breathing and high breathing. Press the "switch" button to turn off the machine when it is turned on;
- ② Do not use parts, accessories or adapters that are not approved by the manufacturer. Use oxygen enrichment instrument other than this one. Other accessories will reduce the performance of the machine;
- ③ Do not use this product in parallel or in series with other oxygen enrichment instruments or oxygen therapy equipment;
- ④ The machine can make oxygen when it is turned on without additional water;

WARNING AND SUGGESTIVE EXPLANATION

Special warning:

- ▶ People who need uninterrupted oxygen inhalation should be equipped with other oxygen supply devices, such as oxygen storage tanks, oxygen bags, standby power supply, etc., in case they cannot take oxygen in time due to power failure or machine failure.
- ▶ Unauthorized personnel are not allowed to disassemble the shell of this machine.

Measures to reduce the risk of burn, fire, electric shock or personal injury:

- ▶ Oxygen is a combustion-supporting gas. Smoking is prohibited when using it, and it should be kept away from other combustible sources such as matches and cigarettes to avoid fire hazards.
- ▶ It is forbidden to use oil or grease in any part of this product and its vicinity.
- ▶ If the power supply voltage is unstable, please install a voltage regulator before using it, so as not to affect the startup of this machine.
- ▶ Avoid placing this product in a high temperature or humid environment, and do not let this machine be exposed to rain or water.
- ▶ When children or disabled patients use this product, it is necessary to closely monitor the use situation.



2 SUMMARY

Range of application

The FYY-03 oxygen enrichment instrument uses membrane separation method, which uses the different permeation rates of molecules in the air when they penetrate the oxygen-enriched membrane. Driven by the pressure difference, the oxygen in the air passes through the oxygen-enriched membrane preferentially, and pure and moist air is obtained, with the oxygen concentration ranging from 30% to 5%(V/V). Oxygen-enriched membrane can effectively block bacteria, PM2.5 and other substances, and the gas is moist and has no sense of breathing. Is suitable for the daily use of broad masses of people.



3 PRODUCT DESCRIPTION

1 Technical parameter

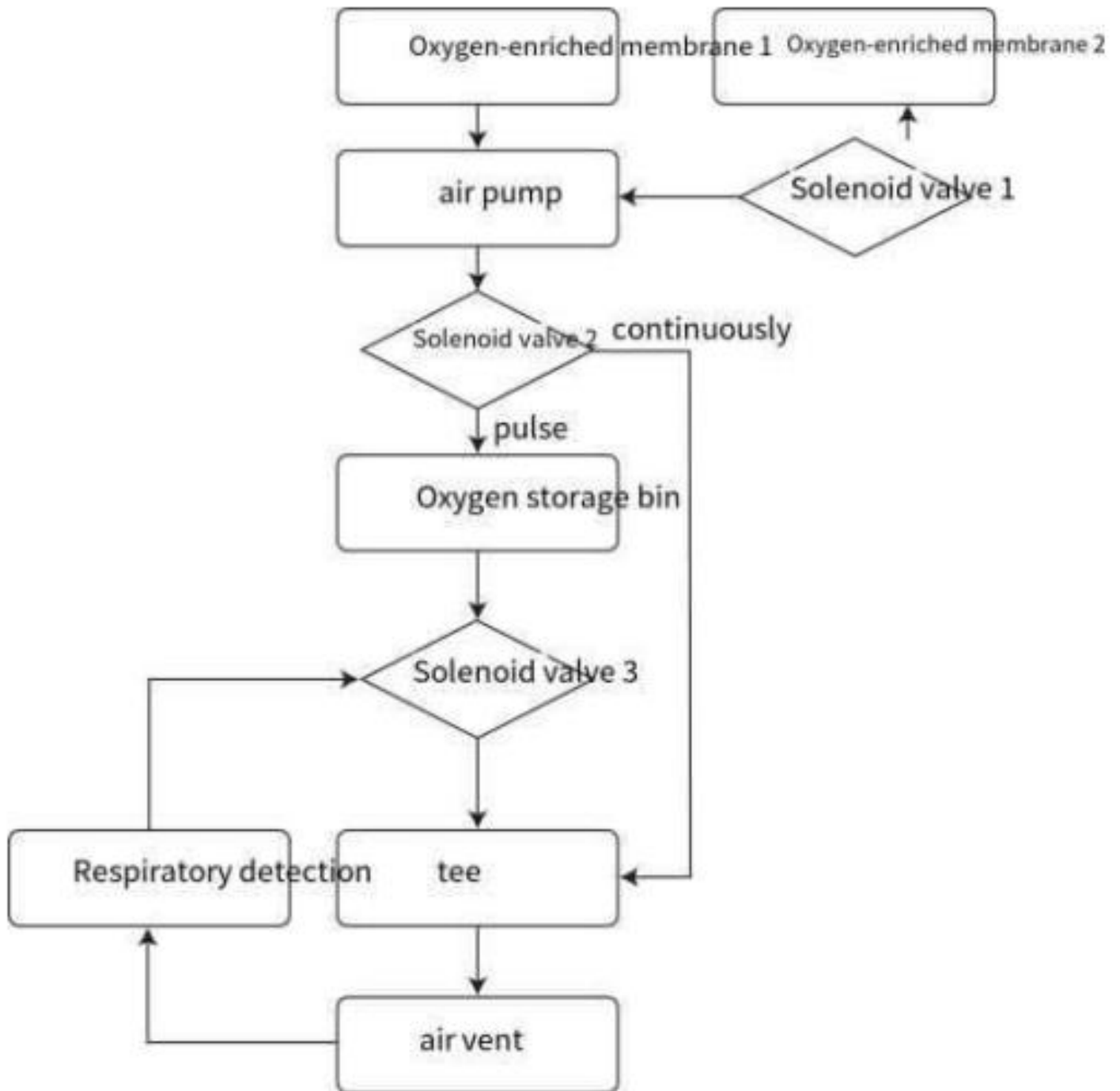
Item	Parameter
Weight	0.85KG
Outline dimension	125*95*140mm (length x width x height)
Power	10W
Service pressure range	50kpa-106kpa
Ambient temperature	5-40 degrees Celsius
Rated current/voltage	0.9A/11.1V
Rated flow	Low gear: 1.2 ± 0.2 L/min High gear: 1.8 ± 0.2 L/min.
Oxygen output concentration	$30 \pm 5\%$
Working noise	≤ 45 dB(A)

2 Equipment characteristics

- a) According to the type of electric shock prevention: Class II;
- b) According to the degree of electric shock prevention: type B;
- c) According to the degree of protection against harmful liquid: IPX0;
- d) Classification by operation mode: continuous operation.



3 Gas path working diagram

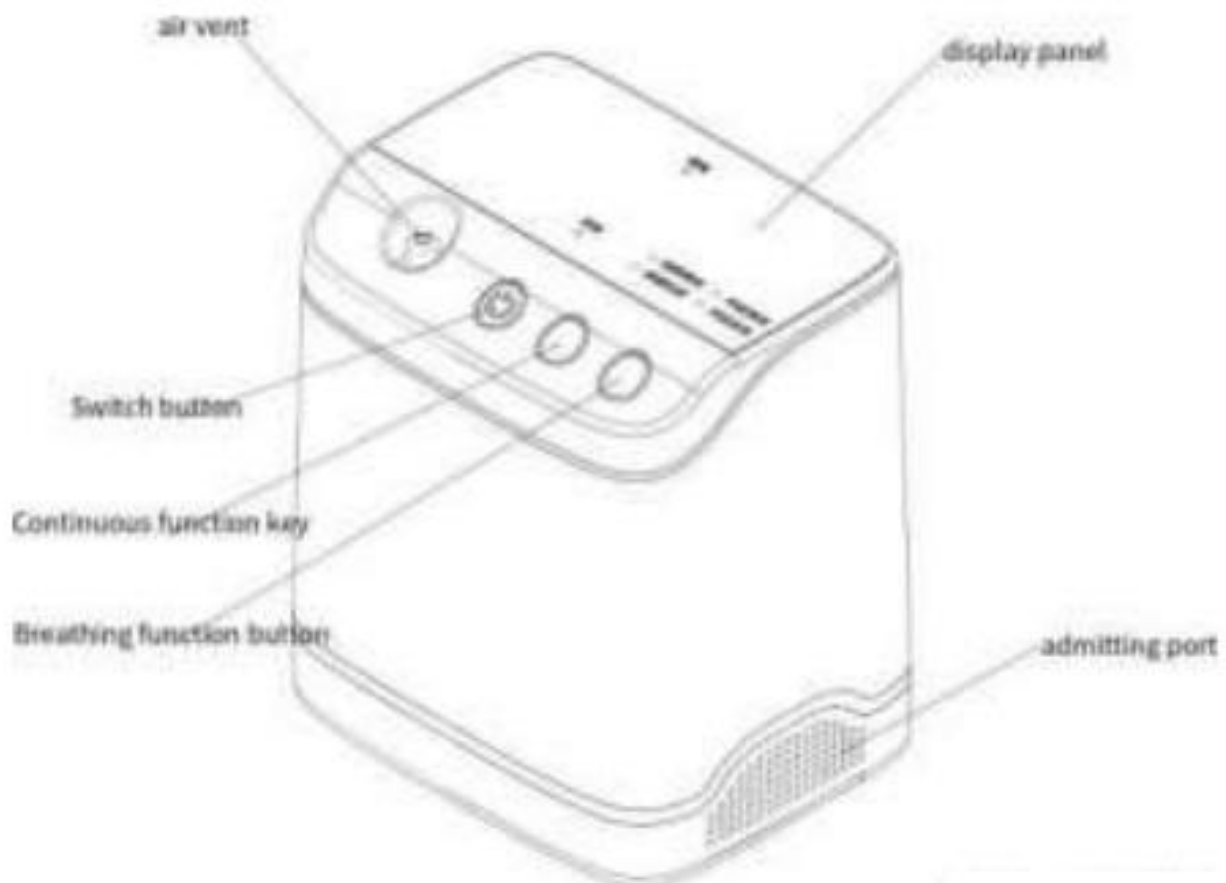


4 INSTALLATION INSTRUCTIONS

1 Out Of Box Audit

First, check whether the cartons or other packages are damaged. If there is any damage, please contact the carrier or dealer immediately. Check the outer packaging to make sure there is no damage, remove all the detachable packages in the carton and carefully take out all the items. Check whether the appearance of the product is intact and whether the type and quantity of accessories are consistent with the product list. Read the instruction manual of this product carefully. Store the repackaged product in a dry place. Do not place anything on top of this product. Note: Unless it is used immediately, it is necessary to keep cartons and store packaging materials.

2 Structural representation

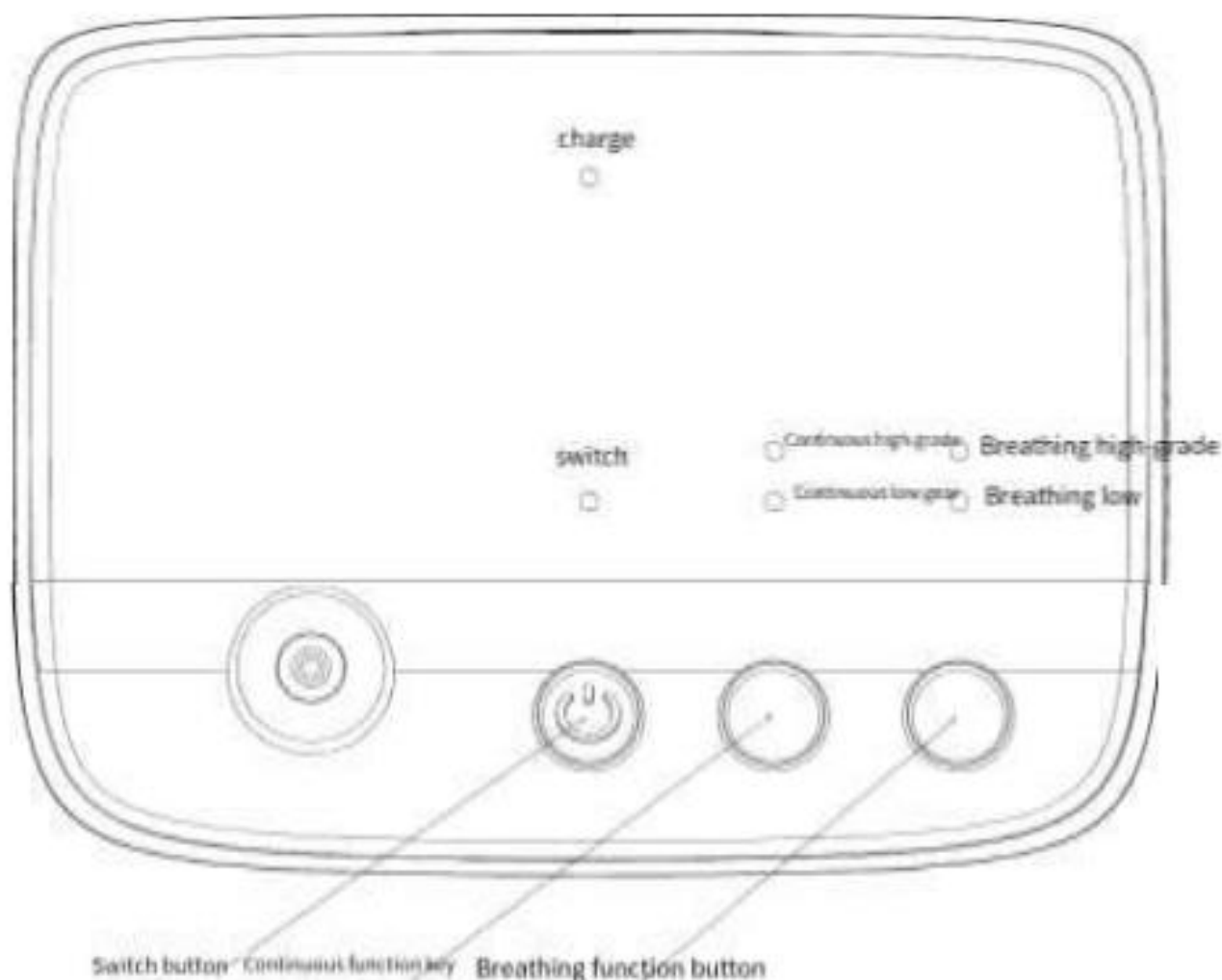


5 HANDLING INSTRUCTION

Working environment temperature: 5°C-40°C Power: ≤10W

Atmospheric pressure: 50kpa~106kpa

1 Key function of operation panel



Press the "switch" button in the power-off state, and the "switch" indicator light will be on, and the machine will enter the power-on state. Press the "switch" button in the power-on state, the "switch" indicator goes out and the machine is turned off.

Press the "Continuous" button when the machine is turned on. If the previous "Continuous Low" indicator goes off, the machine will switch to "Continuous Low" operation and the "Continuous Low" indicator will light up. If the "continuous low" indicator light is on before, the machine will be switched to "continuous high" operation, and the "continuous high" indicator light will be on.

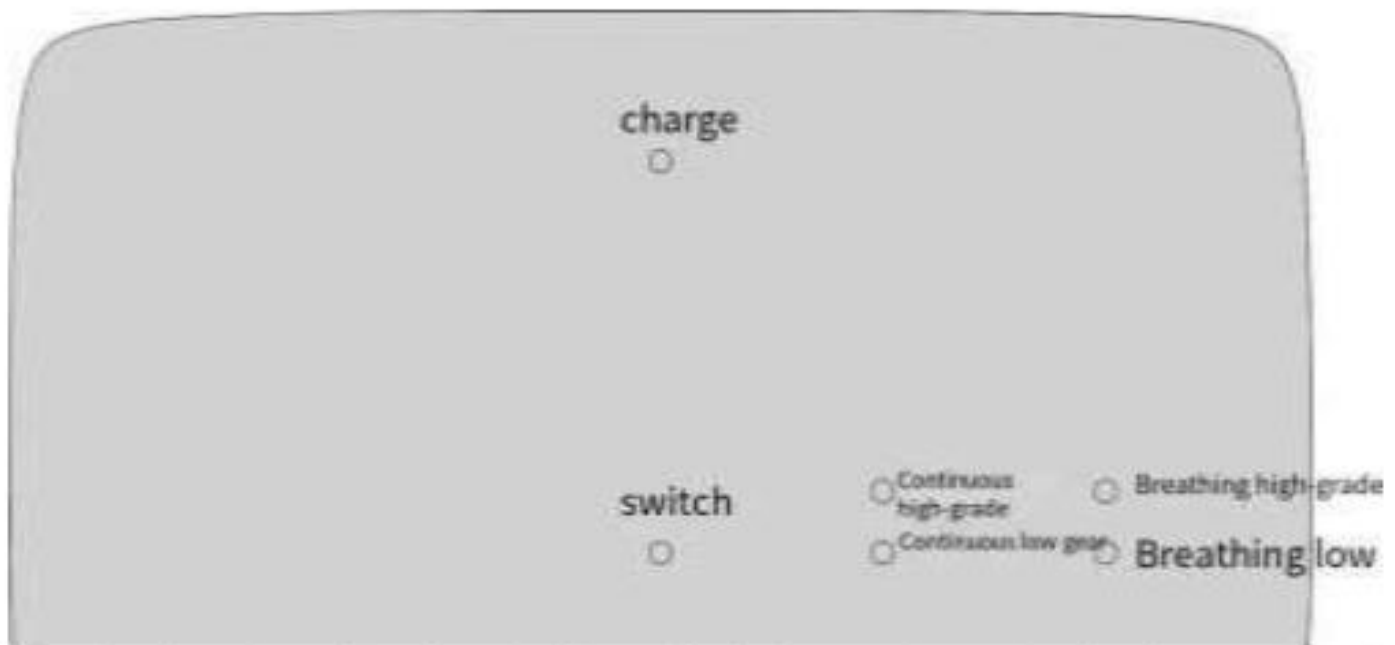
Press the "Breathe" button when the machine is turned on. If the previous "Breathe Low" indicator goes off, the machine will switch to "Breathe Low" and the "Breathe Low" indicator will be on. If the previous "Breathing Low" indicator light is on, the machine will switch to "Breathing High" operation, and the "Breathing High" indicator light will be on.

2 Instructions for equipment use

- ① Please read the precautions and safety instructions carefully before using the equipment.
- ② Select the inhalation mode and connect the oxygen inhalation tube according to the instructions.
- ③ When running in continuous gear, the air outlet continuously outputs oxygen-enriched air.
- ④ When the breathing gear is running, the machine detects people's breathing action, outputs oxygen-enriched air according to people's breathing frequency when breathing action is detected, and outputs oxygen-enriched air according to a fixed frequency when breathing action is not detected.



2. Instructions for equipment use



When charging, the "charging" indicator light is on. When charging is completed or not, the "Charging" indicator goes out.

When the machine is turned on, the "switch" indicator lights up. After the machine is turned off, the "switch" indicator goes out.

When the machine is running in "continuous low gear", the "continuous low gear" indicator light is on. When the machine is running in "continuous high-grade", the "continuous high-grade" indicator light is on.

When the machine is running at "low breathing level", the "low breathing level" indicator light is on. When the machine is running at "High Breathing", the "High Breathing" indicator light is on.

Warning:

- ① This product is an ordinary oxygen-making product, and cannot be used as a special first-aid equipment or a substitute for medical equipment
- ② This product with non-specified accessories may affect performance.

6 CARE AND MAINTENANCE

1 Transportation and storage conditions

Storage temperature: 5°C~40°C

No corrosive gas, well ventilated and dry room.

2 Maintenance

1) Clean the casing of this machine.

Please turn off the power first:

The machine cannot be disassembled without authorization, and the shell can be wiped with a soft towel.

2) Cleaning nasal oxygen tube

After each use, the pipeline can be disinfected by wiping the air outlet with alcohol, and after 3-5 uses, white vinegar can be added with water.

(1: 3 ratio for disinfection) or soak in hot water.

3) Disposal of wastes and residues

The disposal of wastes and residues shall comply with the relevant national laws and regulations.

Circuit and appearance changes due to machine improvement without notice.



4) List of faults and repair

Problem	Inspection method
Equipment does not operate	Plug in the charger and charge it for about 5 minutes to test again.
The battery is not charge	Check whether the plug is damaged and whether the socket is powered normal
	Check the charger for damage.
Excessive noise	Check the instrument for loose installation.
	Whether the instrument is blocked by foreign objects, gently remove it with tweezers.
	The instrument has been used for too long, and the dust and dirt are serious. Just clean and maintain it.

If there is any problem with the equipment, please call the service hotline: 010-87672668.

7 PARTS LIST

List number	List detail	quantity
one	Host of this product	1 set
two	Oxygen inhalation tube	1 set
three	operation instruction	1 copy
four	guarantee card	1 copy (attached to the instruction)
five	work certificate	1 copy

WARRANTY POLICY

Dear customers:

- Thank you for using this product. In order to protect your rights and interests, please read the following warranty provisions carefully when purchasing the machine:
- The warranty period of FYY-03 oxygen enrichment instrument is one year (calculated from the date of issuing data credentials). During the warranty period, the company will be responsible for free maintenance for any performance failure caused by the quality problems of the product itself and meeting the warranty conditions (non-man-made damage).
- The company will not be responsible for the breakdown of the machine after disassembly, modification or installation of other functions, and the breakdown and damage caused by force majeure.
- This equipment is maintained free of charge for life. After the warranty period expires, the company has the right to charge material fees for parts.
- External accessories of the product (charging power supply, suction pipeline, buckle and other products) are not within the maintenance scope.

Guarantee Card

Product name/model	Date of purchase
After-sales call	Product number
Customer name	Contact information
contact address	
Dealer (please affix official seal)	

This certificate will not take effect until it is sealed by the company.

