



T536-100 Chopped Twix® Cookie Bars

Issue Date:	2/14/2023	Revision:	C
-------------	-----------	-----------	---

PRODUCT DESCRIPTION	
Varying sized pieces of chopped Twix Cookie Bars	

PHYSICAL ATTRIBUTES							
Appearance:	Irregular pieces varying in size and shape						
Color:	Medium brown						
Flavor:	Cookie, caramel, and milk chocolate						
Pack Size:	2x5lb poly bags per corrugated case						
Case Dimensions:							
L[depth]xWxH in.	7	14.5	6	Case Cube(ft ³):	0.3524	Pallet Conf. (TI / HI)	15 10

INGREDIENTS	
MILK CHOCOLATE (SUGAR, COCOA BUTTER, CHOCOLATE, SKIM MILK, LACTOSE, MILKFAT, SOY LECITHIN, PGPR, ARTIFICIAL FLAVORS), ENRICHED WHEAT FLOUR (WHEAT FLOUR, NIACIN, REDUCED IRON, THIAMINE MONONITRATE, RIBOFLAVIN, FOLIC ACID), SUGAR, PALM OIL, CORN SYRUP, SKIM MILK, DEXTROSE, LESS THAN 2% - SALT, COCOA POWDER, SOY LECITHIN, MODIFIED CORN STARCH, BAKING SODA, ARTIFICIAL FLAVOR.	
ALLERGENS:	CONTAINS: MILK, WHEAT AND SOY. MAY ALSO CONTAIN TRACES OF: PEANUTS, TREE NUTS AND EGG.

Cornstarch is used as a flow agent.

NUTRITIONAL INFORMATION	
NUTRIENT	Per 100g
CALORIES	492.6196
TOTAL FAT (g)	23.0075
SATURATED FAT (g)	13.4588
TRANS FAT (g)	0.2148
CHOLESTEROL (mg)	5.6181
SODIUM (mg)	205.8504
TOTAL CARBOHYDRATE (g)	66.8370
DIETARY FIBER (g)	1.1866
TOTAL SUGARS (g)	49.1836
ADDED SUGARS (g)	45.2471
PROTEIN (g)	4.5645
VITAMIN D (mcg)	0.0000
CALCIUM (mg)	97.7026
IRON (mg)	1.2008
POTASSIUM (mg)	193.7309



Nutrition Facts	
About 252 servings per container	
Serving size 2 Tbsp (18g)	
Amount per serving	90
	% Daily Value*
Total Fat 4g	5%
Saturated Fat 2.5g	13%
Trans Fat 0g	
Cholesterol 0mg	0%
Sodium 35mg	2%
Total Carbohydrate 12g	4%
Dietary Fiber 0g	0%
Total Sugars 9g	
Includes 8g Added Sugars	16%
Protein 1g	
Vitamin D 0mcg	0%
Calcium 18mg	2%
Iron 0mg	0%
Potassium 35mg	0%

*The % Daily Value tells you how much a nutrient in a serving of food contributes to a daily diet. 2,000 calories a day is used for general nutrition advice.

Brand Name:	TR Toppers	Net Weight: (Lbs.)	10.00
Case GTIN	00651844100571	Net Weight: (Kg.)	4.54
Kosher	Star-D	Gross Weight: (Lbs.)	11.00
Country of Origin	USA	Gross Weight: (Kg.)	4.99
Metal Detection	1.5mm Ferrous	1.8mm Non-Ferrous	2.0mm SS316

MICROBIOLOGICAL ATTRIBUTES*	
Attributes	Limits
Total Aerobic Plate Count (cfu/g)	<30,000
Yeast and Mold (cfu/g)	<100
Coliforms (cfu/g)	<10
E. coli (cfu/g)	Negative
Salmonella (/375g)	Negative
Listeria (/25g)	Negative

*The above attributes are provided by the product manufacturer. Parameters are guaranteed attributes. It is not indicative of product testing.

GMO STATEMENT	
	Completely Produced with Genetic Engineering.
X	Partially Produced with Genetic Engineering.
	May be produced with Genetic Engineering.
	NOT Produced with Genetic Engineering.

STORAGE CONDITIONS	
Recommended Condition:	Best kept refrigerated ($\leq 40^{\circ}\text{F}$).
Alternate Condition:	May be stored frozen ($\leq 10^{\circ}\text{F}$).
Alternate Condition:	Seal and refrigerate after opening. Do not store at temperatures greater than 40°F after opening.

SHIPPING CONDITIONS	
Recommended Condition:	Ship on a refer or freezer truck ($\leq 40^{\circ}\text{F}$).

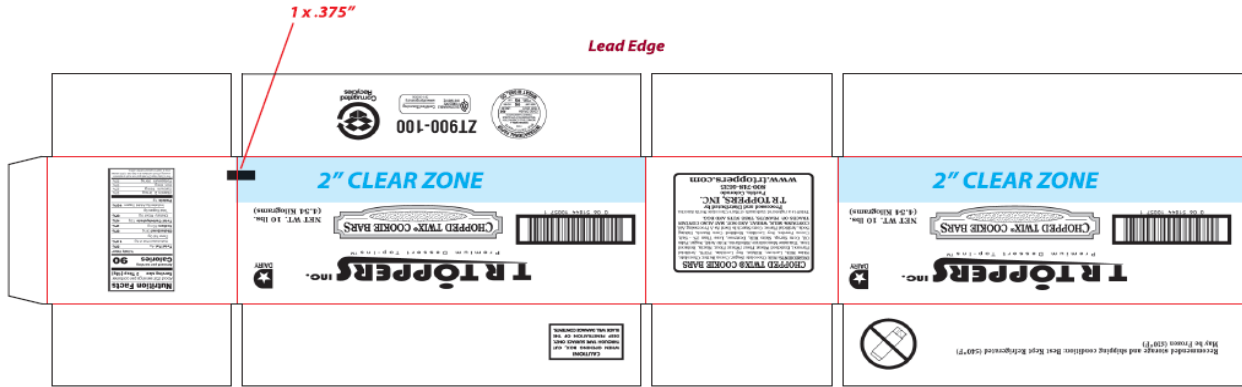
SHELF LIFE	
Recommended Shelf Life:	365 days at recommended storage conditions.
Alternate Shelf Life:	Calculate 1/3 of remaining shelf life after opening.

ALLERGEN / SENSATIZER TABLE			
COMPONENT	PRESENT IN PRODUCT	PRESENT IN PRODUCTS MANUFACTURED ON THE SAME LINE	PRESENT IN THE SAME MANUFACTURING PLANT
PEANUTS AND DERIVATIVES	MAY CONTAIN	YES	YES
TREE NUTS AND DERIVATIVES	MAY CONTAIN	YES	YES
EGG AND DERIVATIVES	MAY CONTAIN	YES	YES
MILK AND DERIVATIVES	YES	YES	YES
SOY AND DERIVATIVES	YES	YES	YES
WHEAT	YES	YES	YES
FISH	NO	NO	NO
CRUSTACEAN SHELLFISH	NO	NO	NO
SULFITES > 10 ppm	NO	NO	YES
MUSTARD	NO	NO	NO
SESAME	NO	NO	NO
GLUTEN	YES	SOURCE: WHEAT FLOUR	
FD&C ARTIFICIAL COLORS	NO		

GRANULATION										
Sieve Size	1/2"	1/4"	#8	#20	Pan					
%	0 - 6.5	38 - 72.5	15.8 - 40	0 - 17.6	1.2 - 10.8					

CODE FORMAT	EXAMPLE: 25811 15:32 T536-100
Case Code - Left Side: JJJYL, Time, T536-100, BB MM-YYYY	JJJ = Production Julian Date 258 = September 15; Y = Last Digit of Year 1 = 2011; L = Line (Numeric) 1 = Line 1; Time: HH:MM 15:32 = 3:32 p.m. Product Code = (e.g. T536-100)
Case Code - Right Side: JJJYL, Time, T536-100, BB MM-YYYY	
Pallet Markings: JJY, Pallet #, T536-100	

LABEL / CASE GRAPHICS



Recommended storage and shipping condition: Best Kept Refrigerated ($\leq 40^{\circ}\text{F}$)
May be Frozen ($\leq 10^{\circ}\text{F}$)

TR TOPPERS INC.
Premium Dessert Top-Ins™



CAUTION!
WHEN OPENING BOX, CUT THROUGH TAPE SURFACE ONLY. DEEP PENETRATION OF THE BLADE WILL DAMAGE CONTENTS.



NET WT. 10 lbs.
(4.54 Kilograms)



CHOPPED TWIX® COOKIE BARS
INGREDIENTS: Milk Chocolate (Sugar, Cocoa Butter, Chocolate, Skim Milk, Lactose, Milkfat, Soy Lecithin, PGPR, Artificial Flavors), Enriched Wheat Flour (Wheat Flour, Niacin, Reduced Iron, Thiamine Mononitrate, Riboflavin, Folic Acid), Sugar, Palm Oil, Corn Syrup, Skim Milk, Dextrose, Less Than 2% - Salt, Cocoa Powder, Soy Lecithin, Modified Corn Starch, Baking Soda, Artificial Flavor. Corn Starch Is Used As A Processing Aid.
CONTAINS: MILK, WHEAT, AND SOY. MAY ALSO CONTAIN TRACES OF: PEANUTS, TREE NUTS AND EGG.
 Twix® is a registered trademark of Mars Chocolate North America
Processed and Distributed by
TR TOPPERS, INC.
 Pueblo, Colorado
 800-748-4635
www.trtoppers.com



Nutrition Facts
About 252 servings per container
Serving size 2 Tbsp (18g)

Amount per serving		% Daily Value*
Calories	90	
Total Fat 4g		5%
Saturated Fat 2.5g		13%
Trans Fat 0g		
Cholesterol 0mg		0%
Sodium 35mg		2%
Total Carbohydrate 12g		4%
Dietary Fiber 0g		0%
Total Sugars 8g		
Includes 8g Added Sugars		16%
Protein 1g		
Vitamin D 0mcg		0%
Calcium 15mg		2%
Iron 0mg		0%
Potassium 35mg		0%

*The % Daily Value (DV) tells you how much a nutrient in a serving of food contributes to a daily diet. 2,000 calories a day is used for general nutrition advice.



ZT900-100

