

PRODUCT DATA SHEET



PRODUCT CODE

CASLFC1400A

RANGE

Clear 6

DESCRIPTION

Clear 6 Slider Single 1400 Box A
Brushed Brass

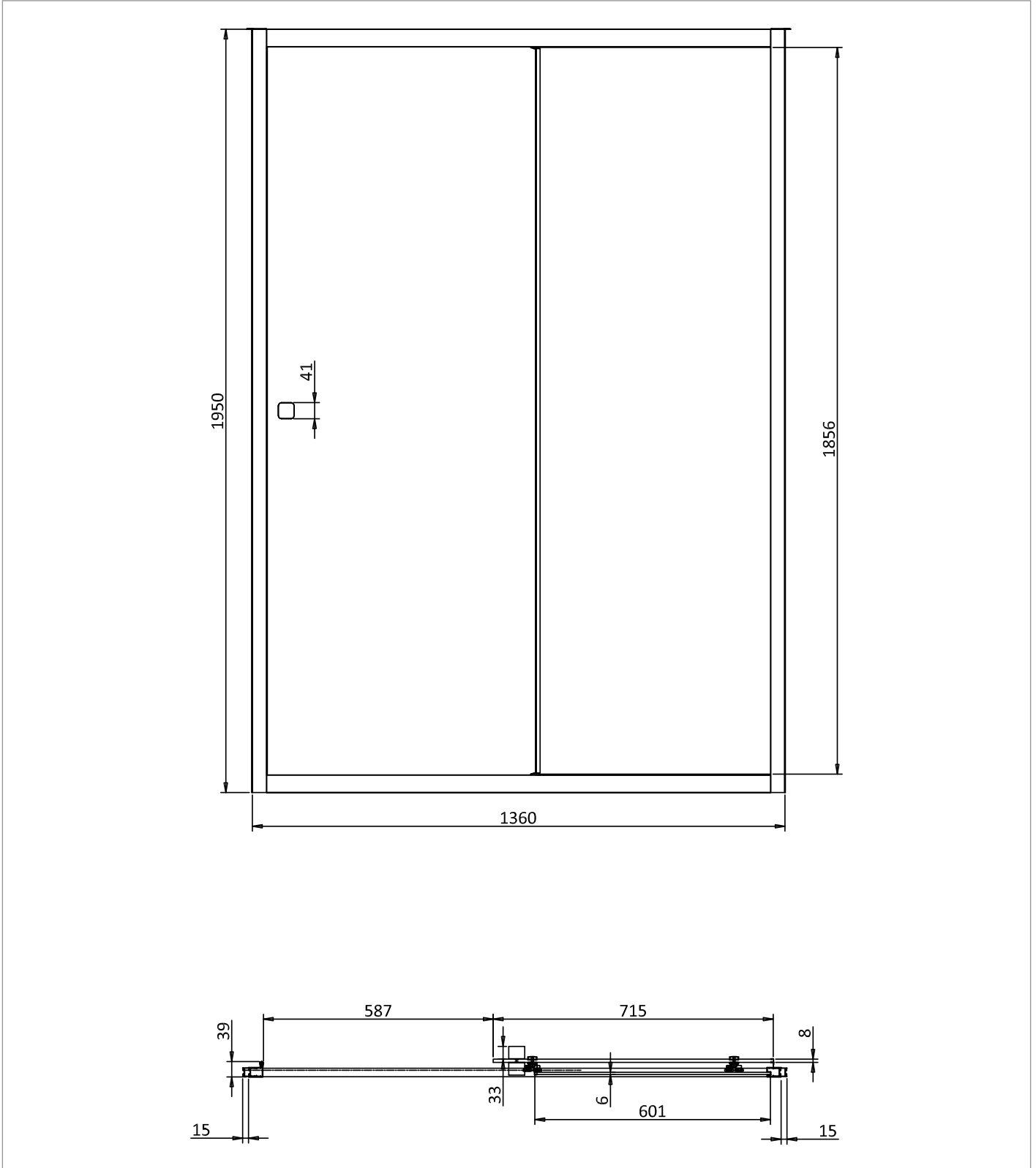
CATEGORY	Showering
WARRANTY DETAILS	Lifetime
COLOUR	Brushed Brass
FINISH APPLICATION	Anodised
PRIMARY MATERIAL	Glass
INSTALL TYPE	Wall Mounted
PRODUCT WIDTH MM	1360
PRODUCT HEIGHT MM	1950
PRODUCT NET WEIGHT KG	28
STANDARDS	EN14428

HANDING SHOWERING	Universal
GLASS THICKNESS	8mm
EASY CLEAN	Yes
MAGNETIC DOOR STRIPS	No
POWER SHOWER PROOF	Yes
NUMBER OF DOORS	1
SOFT CLOSING DOORS	No
SAFETY GLASS	Yes
REMOVABLE SEALS	No
QUICK RELEASE ROLLERS	Yes
WET ROOM COMPATIBLE	Yes
DOOR A INFORMATION	Sliding door
DOOR ADJUSTMENT	1360-1390mm

TECHNICAL DIMENSIONS

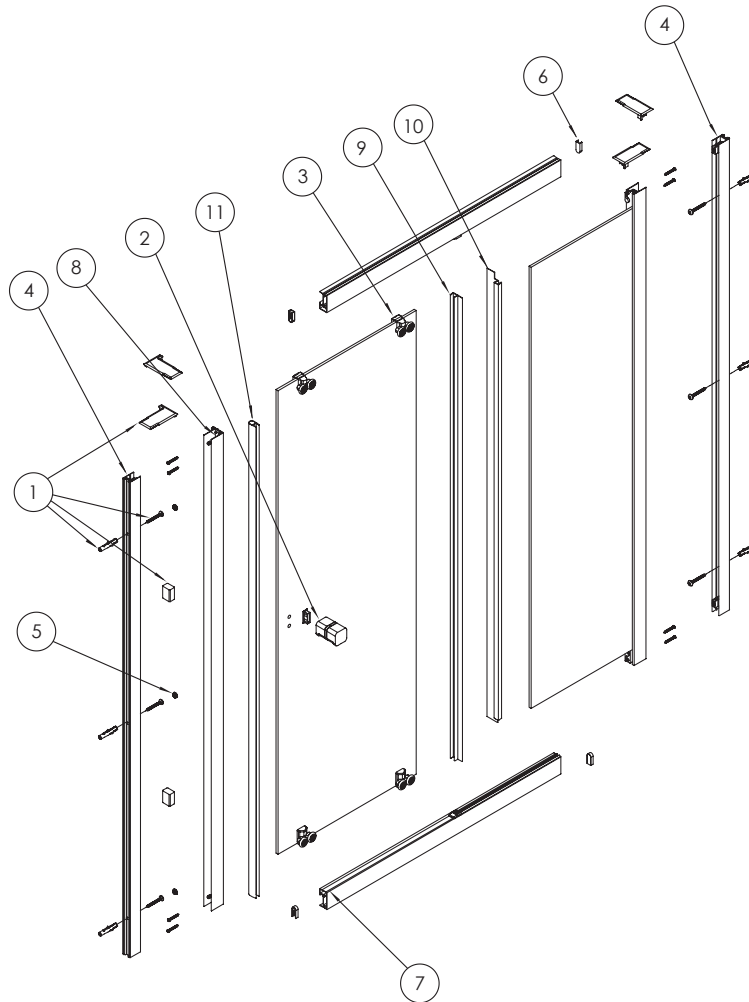
Dimensions in mm unless otherwise specified.

Tolerances (per material type) apply.



SPARES LIST

Only the parts labelled are available as spares.



NUMBER	PART CODE	DESCRIPTION
1	CASLIDEPACKF	Clear 6 Install Pack Slider Br Brass
2	CA600006F	Clear Handle All Models x1 Br Brass
3	CA600033F	Clear Slider Rollers Top Bottom Br Brass
4	CAPROFILEF	Clear Wall Profile Br Brass
5	CA000036F	Clear 6 Screw Cover All Doors Br Brass x3
6	CA600004F	Clear Lock Cover x4 Br Brass
7	CA600040F	Clear 6 Track Cover Slider/Quad Br Brass
8	ET0000031	Clear 6 Locking Levers
9	CA600011	Clear Seal Sliding Door Part I
10	CA600010	Clear Seal Sliding Door Part J
11	CA600012+	Clear Sliding Door Seal 2023 Part H