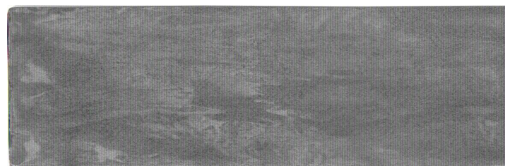


## RIAD GREEN/6,5X20

Model: **RIAD GREEN/6,5X20**  
Reference: **26079 GREEN**  
Size: **6,5x20** cm  
Thickness: **9,00** mm  
Finish: **Natural**  
Body Type: **WALL TILE - GROUP BIII**  
**GL - GLAZED Ceramic Tile**



### Water absorption

EN ISO-10545-3	Water absorption	<b>&gt; 10%</b>
----------------	------------------	-----------------

### Dimensional characteristics

EN ISO-10545-2	Surface quality	<b>&gt; 95%</b>
EN ISO-10545-2	Curvature flatness	<b>± 0,75 mm</b>
EN ISO-10545-2	Thickness	<b>± 0,5 mm</b>
EN ISO-10545-2	Length and Width	<b>± 0,75 mm</b>
EN ISO-10545-2	Rectangularity	<b>± 0,75 mm</b>
EN ISO-10545-2	Straightness of sides	<b>± 0,5 mm</b>

### Mechanical characteristics

EN ISO 10545-11	Crazing resistance	<b>Pass</b>
EN ISO 10545-9	Thermal shock resistance	<b>Pass</b>
EN ISO-10545-4	Breaking strength	<b>&gt; 600 N</b>
EN ISO-10545-4	Modulus of rupture	<b>&gt; 12 N/mm<sup>2</sup></b>

### Surface characteristics

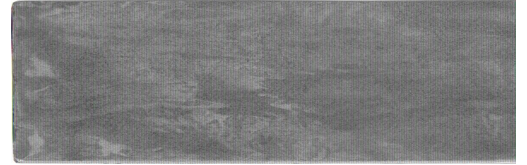
EN ISO 10545-7	Visible failure at No of revolutions	<b>-</b>
EN-101	Surface scratch resistance	<b>3</b>

### Chemical characteristics

EN ISO-10545-13	High concentrations of acids and alkalis	<b>HA/HA/HA</b>
EN ISO-10545-13	Low concentrations of acids and alkalis	<b>LA/LA/LA</b>
EN ISO-10545-13	Household chemicals and swimming pool salts	<b>A/A</b>
EN ISO-10545-14	Stain resistance	<b>5/-/5/5</b>

## RIAD GREEN/6,5X20

Model: **RIAD GREEN/6,5X20**  
Reference: **26079 GREEN**  
Size: **6,5x20** cm  
Thickness: **9,00** mm  
Finish: **Natural**  
Body Type: **WALL TILE - GROUP BIII**  
**GL - GLAZED Ceramic Tile**



## Non-slip characteristics

DIN-51130	Critical angle (footwear)	-
-----------	---------------------------	---

## CE MARKING



CE Declaration of Performance: **004CPR2017-08-01**