

AXOR One

Single lever basin mixer for concealed installation wall-mounted with lever handle and spout
220 mm



product features

- Consists of: single lever basin mixer, waste set
- spout 220 mm long
- wall-mounted
- Spray pattern: normal spray
- Maximum flow rate (at 3 bar): 5 l/min
- Min. operating pressure: 1 bar
- Max. operating pressure: 10 bar
- ceramic cartridge
- free flow non-closing waste
- handle can be positioned on the right or left, depends on the basic set installation

Article Details

Technology



Design awards



Certificates



AXOR One

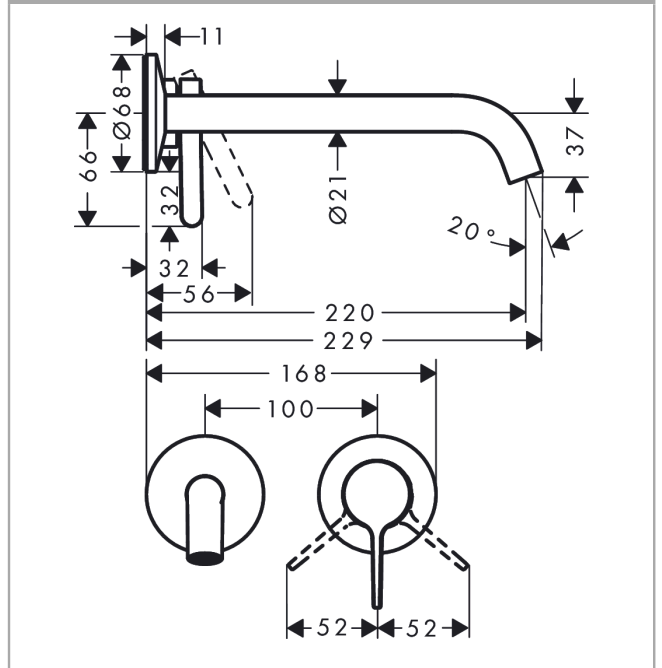
Single lever basin mixer for concealed installation wall-mounted with lever handle and spout 220 mm



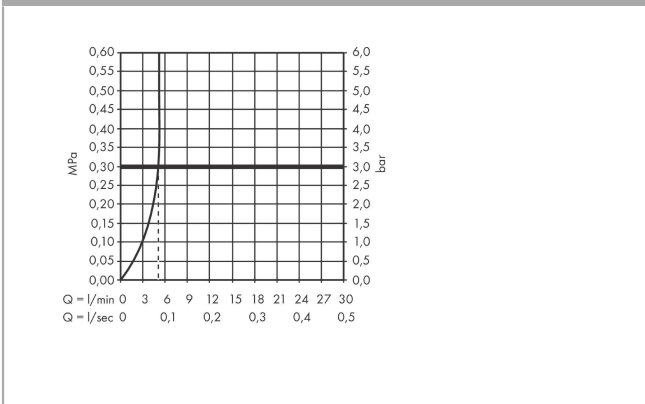
Product image



Scale drawing



Flowchart



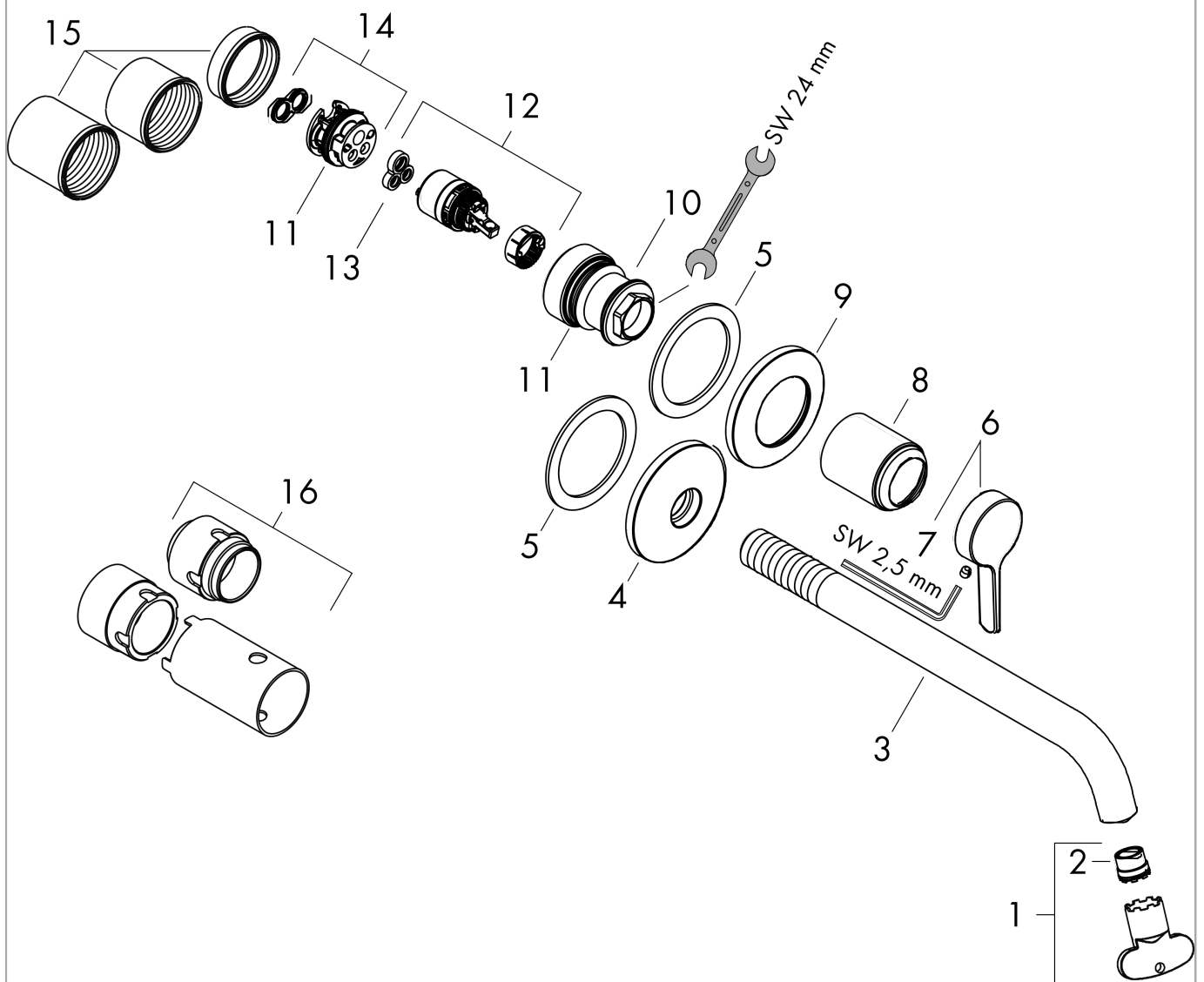
AXOR One

Single lever basin mixer for concealed installation wall-mounted with lever handle and spout
220 mm



Exploded Drawing

Year of production: >06/21



AXOR One

Single lever basin mixer for concealed installation wall-mounted with lever handle and spout
220 mm



Spare part list

Year of production: >06/21

Pos.		Art. no.	Price	PU
1	aerator cpl.	93118000	-	1
2	special tool	98987000	-	1
3	spout 220 mm	94346000	-	1
4	escutcheon for spout	94348000	-	1
5	washer	97600000	-	1
6	handle	94347000	-	1
7	hollow set screw M5x5	98446000	-	1
8	sleeve	93989000	-	1
9	escutcheon for handle	94349000	-	1
10	nut	94752000	-	1
11	O-ring 26x2	98147000	-	1
12	cartridge, assy	93760000	-	1
13	seal	93383000	-	1
14	adapter for cartridge	95634000	-	1
15	fixing set	97971000	-	1
16	extension 25 mm	13586000	-	1
a	pop up waste	51301000	-	1
b	adapter for exchanged connections	93819000	-	1