



GARAGE DOOR SPARES

TM

GARADOR / HORMANN REMOTE CONTROL HANDSET 868MHZ PROGRAMMING GUIDE

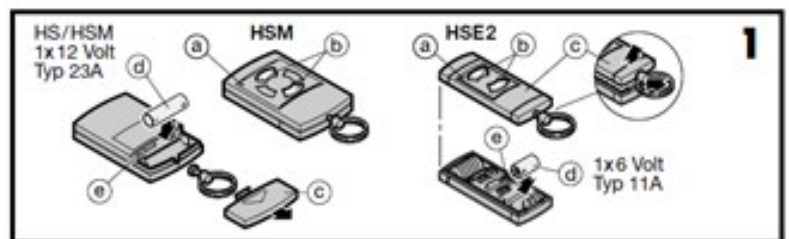


Fig. 1
Hand transmitters HS and HSM

- a LED
- b Control buttons
- c Battery compartment cover
- d Battery
- e Reset button

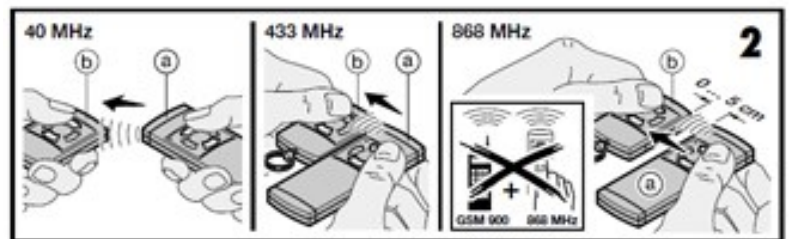


Fig. 2
Extending the remote control set by adding further hand transmitters HS2, HS4 and HSM2, HSM4 or HSE2

Safety Notes:

Keep hand transmitters out of the reach of children at all times!

Hand transmitters should only be used by persons who know how to operate the remote controlled door system.

Only use the remote control when the door is in your line of vision!

Always programme the remote control inside the garage near the door operator.

When putting the remote control into operation, use original components only.

Protect equipment from direct sunlight.

Protect hand transmitters against dampness and dust.

If damp is allowed to penetrate through non-observance of the above, the function of the unit can be seriously impaired. Temperature range: -20°C to +60°C. Local conditions may affect the range of the remote control.

Note

If the garage does not have a separate entrance, you should carry out any programming alterations or expansion inside the garage.

When programming or expanding the remote control set, ensure that no persons or objects are within the door's range of movement.

CAUTION!

Activation of the teaching remote during the learning procedure could set the door in motion if there is an appropriately programmed receiver near to where you are standing!

STEP 1

Hold the transmitter which is to "teach" the code (teaching transmitter) (a) and the transmitter which is to learn the code (learning transmitter) (b) directly alongside each other.

STEP 2

Press and hold the desired button on the teaching transmitter - the LED on the teaching transmitter now glows continuously.

STEP 3

Immediately after having done this, press and hold the button which is to learn on the learning transmitter - the LED on the learning transmitter initially flashes slowly for about 4 seconds, but then starts flashing more rapidly once the learning procedure has been successfully completed.

STEP 4

Release the buttons on the teaching transmitter and learning transmitter.

STEP 5

Check that the transmitters are functioning correctly. If not, repeat steps 1 - 4.

CAUTION!

Activation of the teaching remote during the learning procedure could set the door in motion if there is an appropriately programmed receiver near to where you are standing!

Note: The learning procedure will be aborted if you release the button on the learning transmitter during the slow-flashing period.

ALTERNATIVE PROGRAMMING PROCEDURE

If you have lost your original remote control handset, or you no longer have a working one then you will need to program your new handset using the garage door operator receiver unit.

When carrying out this procedure, it will overwrite all the existing programmed handsets and require you to use the new handset to teach any future handsets.

NOTE: The receiver unit and programming procedure may differ slightly depending on the model of operator you have. For some examples please see Garador's Youtube video channel

First locate the receiver unit and locate the programming button. On older units this will be a small red button on the receiver unit, whereas on newer models - such as the Gara-Matic 9 or 10 - the button will be marked 'P' or 'Prg'.

Press the button briefly, and then take the new remote control handset and hold the button down which you wish to learn the code. The light on the handset should begin flashing for a few seconds before stopping once it has learnt the new code.