



GARAGE DOOR SPARES

TM

## GARADOR / HORMANN REMOTE CONTROL HANDSET 40MHZ PROGRAMMING GUIDE

FIG. 1

- a. LED
- b. Control Buttons
- c. Battery compartment doors
- d. Battery
- e. Reset Button

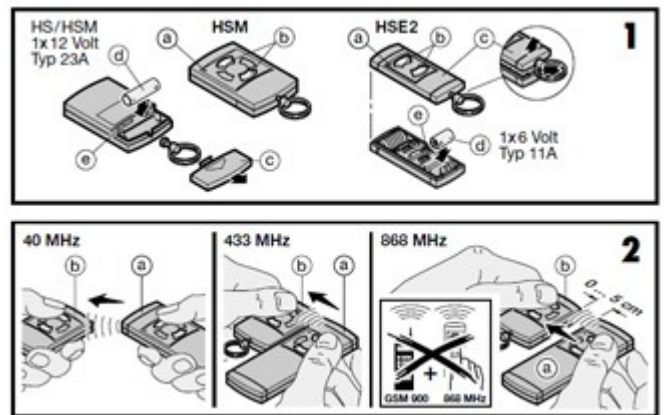


FIG. 2

### Extending the remote set by adding further hand transmitters. HS2, HS4 and HSM2, HSM4 or HSE2

#### STEP 1

Hold the transmitter which is to "teach" the code (teaching transmitter) (a) and the transmitter which is to learn the code (learning transmitter) (b) directly alongside each other.

#### STEP 2

Press and hold the desired button on the teaching transmitter - the LED on the teaching transmitter now glows continuously.

#### STEP 3

**Immediately after** having done this press and hold the button which is to learn on the learning transmitter - the LED on the learning transmitter initially flashes slowly for about 4 seconds, but then starts flashing more rapidly once the learning procedure has been successfully completed. Release all buttons and check that the new remote works correctly. If not, repeat steps 1-3.

## CAUTION!

Activation of the teaching receiver during the learning procedure could set the door in motion if there is an appropriately programmed receiver near to where you are standing!

Note: The learning procedure will be aborted if you release the button on the learning transmitter during the slow flashing period

## IF YOU HAVE LOST YOUR ORIGINAL REMOTE HANDSET:

If you have lost your original remote control handset, or you no longer have a working one then you will need to program your new handset using the garage door operator receiver unit.

When carrying out this procedure, it will overwrite all the existing programmed handsets and require you to use the new handset to teach any future handsets.

NOTE: The receiver unit and programming procedure may differ slightly depending on the model of operator you have. For some examples please see Garador's [Youtube video channel](#)

First locate the receiver unit and locate the programming button. On older units this will be a small red button on the receiver unit, whereas on newer models - such as the GaraMatic 9 or 10 - the button will be marked 'P' or 'Prg'.

Press the button briefly, and then take the new remote control handset and hold the button down which you wish to learn the code. The light on the handset should begin flashing for a few seconds before stopping once it has learnt the new code.