

---

**Model number: WIFI-RF-RGB01**

**Products name: RF24-key Wifi RGB controller**

# Product Specifications



## Product Description

RF 24-key Wifi RGB controller is a universal LED controller for mobile phone control and 433M RF remote control. Using Tuya wifi solution technology and the most advanced PWM (pulse-width modulation) control technology. It can control all 4 line 3 circuit (anode) full-color LED lighting products, such as LED modules, LED light bar, LED light box, etc. It has the advantages of convenient connection and use simple, and memory storage. Through the mobile phone and RF 24-key remote control to change the mode selection, brightness adjustment, speed regulation, and other functions. According to the customer actual demand it can realize the colors jump, the gradient changes, such as dynamic light stroboscopic effect.

## Technical Parameters

### Controller:

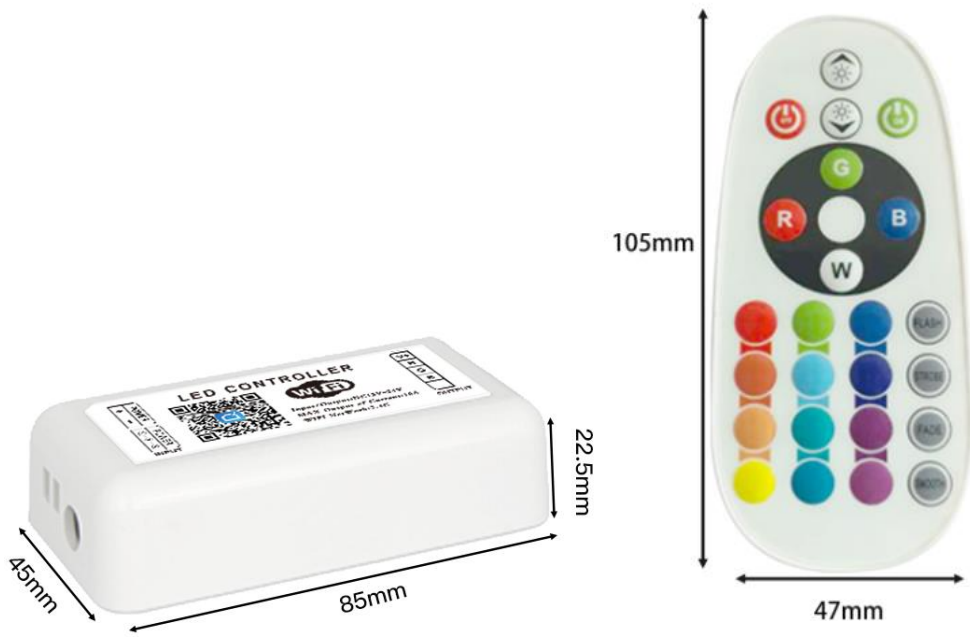
- Working temperature: -20-60°C
- Input voltage: DC12V~24V
- Output: 3 channels
- Connection mode: Common anode
- Controller size: L85×W45×H22.5mm

### Remote control:

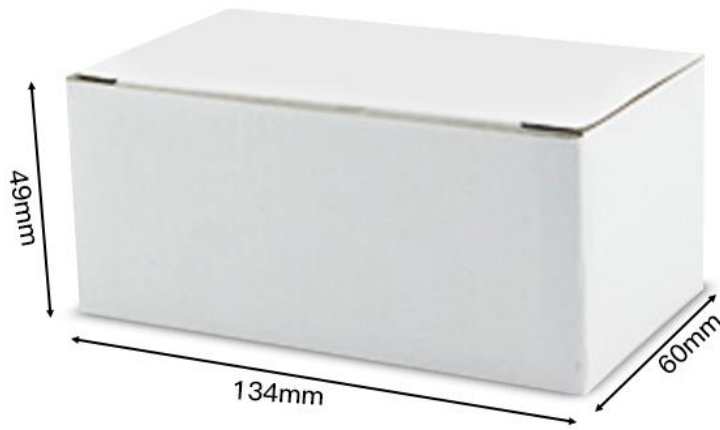
- Working voltage: 3V, 2\*AAA batteries
- Transmitting frequency: 433M
- External dimension: 105\*47\*15mm
- Remote control distance: 20-30m

- Net weight: 95g
- Static power consumption: <math><1W</math>
- Max output current:  $\leq 10A$
- Output power: 12V: $\leq 120W$ , 24V: $\leq 240W$

### External dimension



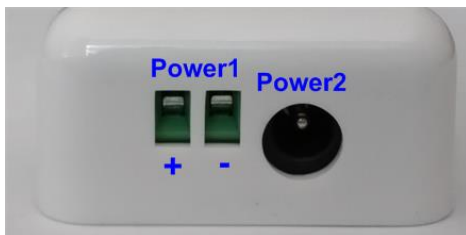
( Controller ) ( Remote control )



( Packing )

### Connection description

**Power input interface:**



Adopt the DC power seat and the plug seat with screw as a power input interface

**Load output interface:**

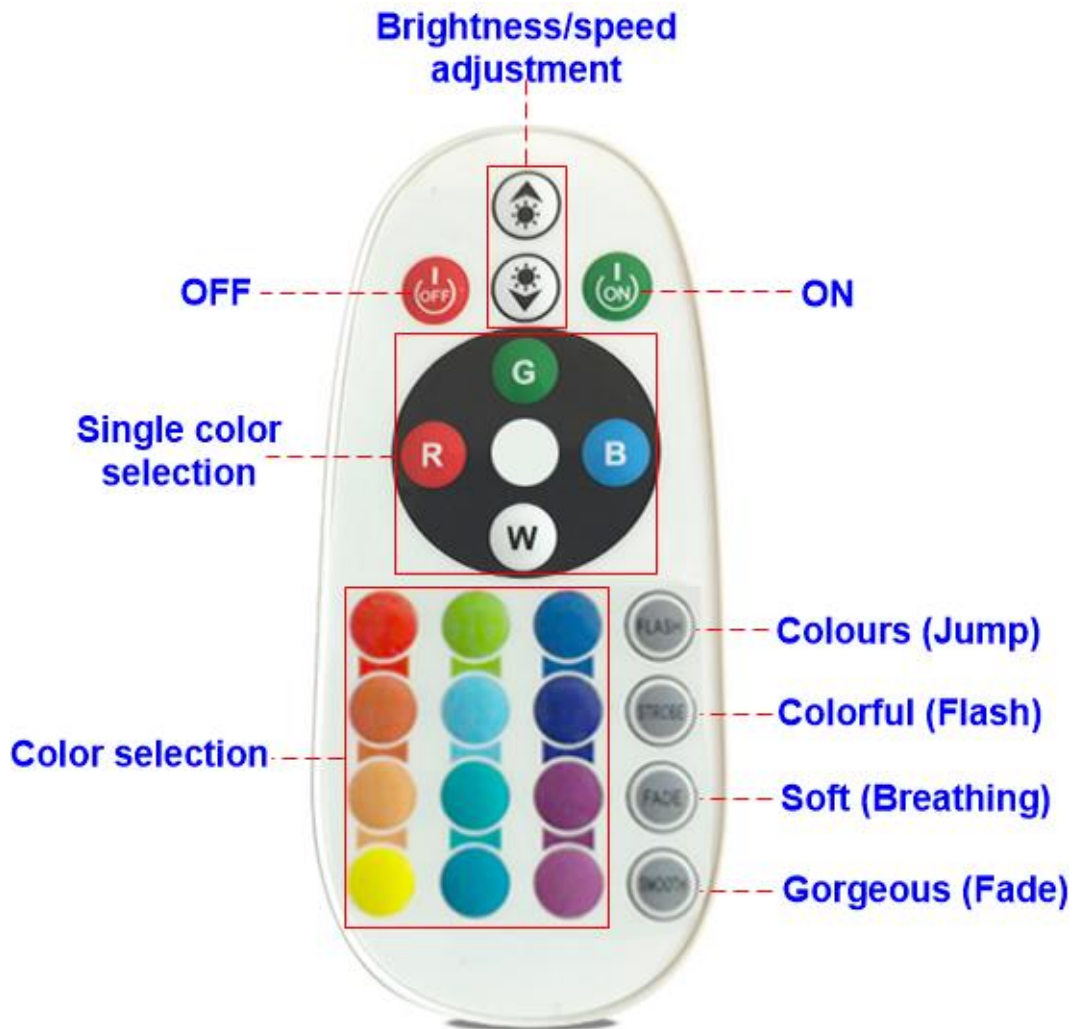


Used to plug with screw as load output interface

## Remote control instructions

### •Function introduction:

1. Use the 2.4G radio frequency wireless to control, it no need to point at controller, can around the obstacles to control.
2. About 20-30m empty remote control distance.
3. The remote control is push-button operated mode. The functions of remote control keys are as follows:



4 dynamic effect modes, as shown below:

NO.	Mode	State effect	Brightness state	Speed state	Remark
1	Colors	Jump	Unadjustable	adjustable	Free choice of color in APP
2	Colorful	Flash			
3	Soft	Breathing			
4	Gorgeous	Fade			

**Note:** 4 dynamic modes corresponding to 4 dynamic scenarios in the scene options of the APP,

---

dynamic color can be set freely through APP.

●**Control methods:**

1. Connect the load line firstly, then connect the power line; make sure all lines no short circuit before power on.
2. When it's ON state, press the corresponding key on the remote control to output the corresponding effect.

**3. The controller is defaults to pass code ex-factory, and one-to-one remote control can be realized through remote control pairing. The method of code matching and code clearing are as follows:**

**Code matching:**

Confirm it is correctly connected between power supply, LED controller and LED load. Switch off the power, then switch on again, and long press the key “**ON**” (within 5 seconds) then you see the green light flash 3 times, then it means code matching is successful.

**Code clearing:**

The code can be cleared as needed. The kit (remote & controller) will stay in the original state after code clearing, and it can work again when code rematching is done. Clearing is followed the below instructions:

Switch off the power, then switch on again, and long press key “**OFF**” (within 5 seconds), then you see the green light flash 3 times, then it means code clearing is successful.

## APP instructions



1. Before use, need to install wifi control software (App-“**Smart Life**”) first on the mobile, There are two kinds of installation method is as follows:

① Please scan the QR code below to download the software APP:



② In the Google Play Store (android phone) or the App Store (apple phone) search “**Smart Life**” to download and install.

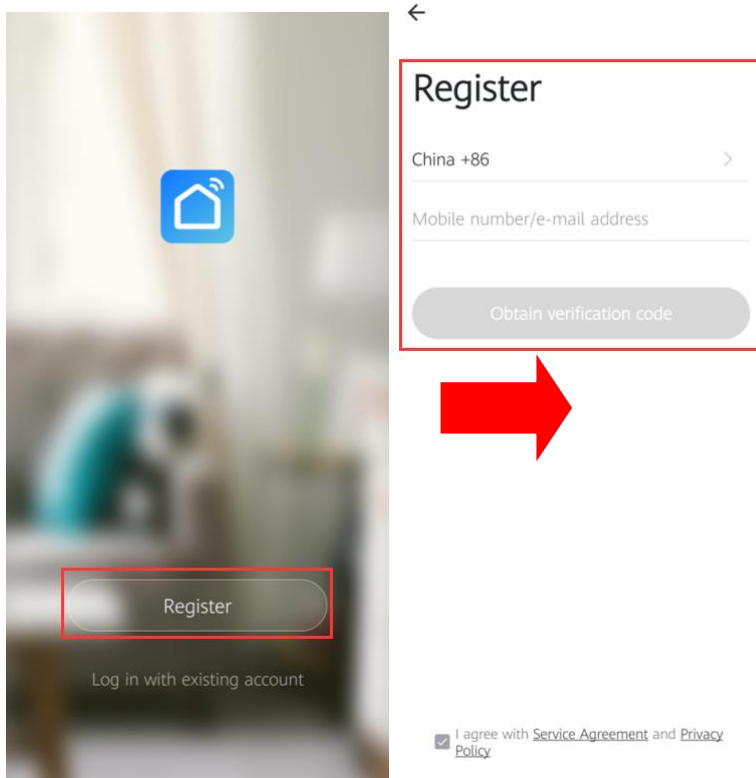
2. Download and install the software, after the installation is complete, open the phone wifi function and connect the router.

3. Controller part: connect load line first, then connect the power cord; to ensure no short circuit between the cables Before power on.

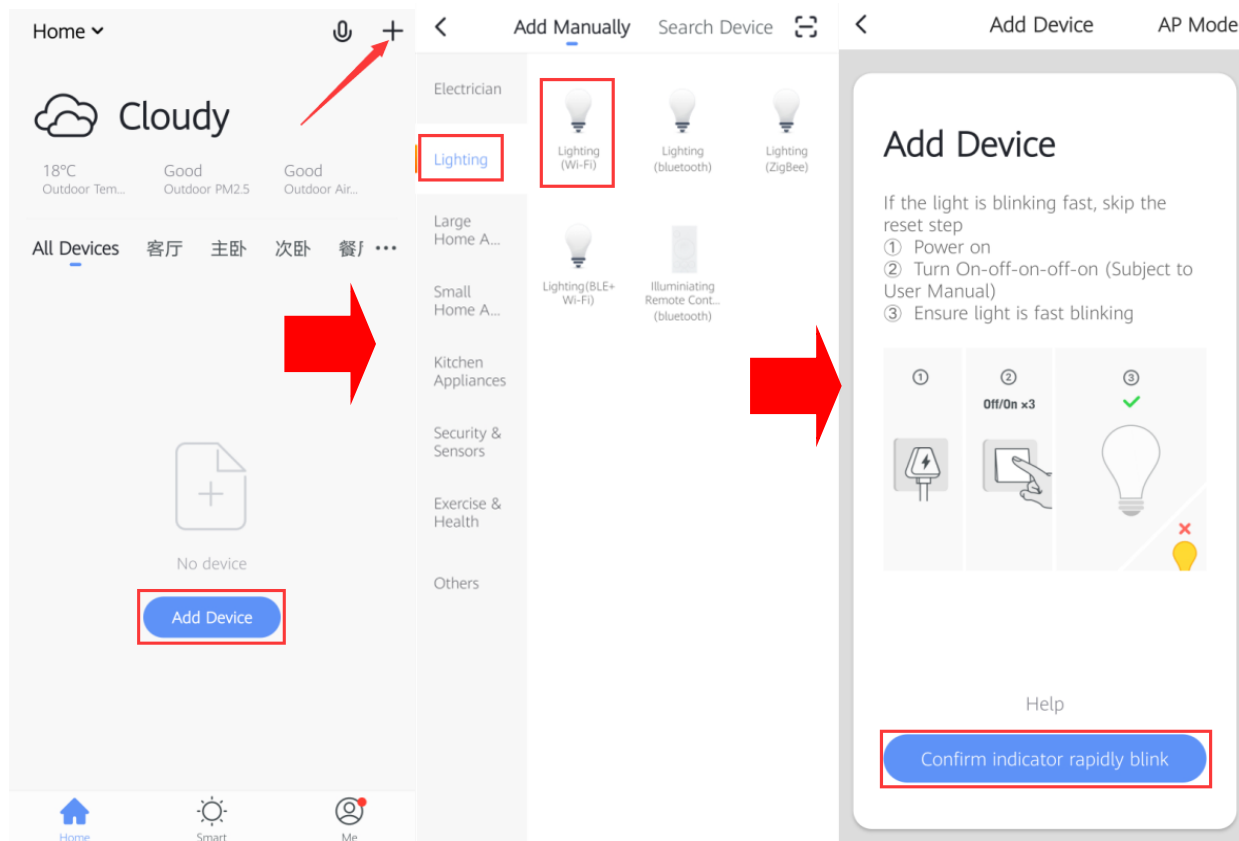
**Note: Before the controller is not configured with the network, the white light will flash quickly in the network configuration state after power-on.**

4. Open the control software APP-“Smart Life”  on the phone:

If you don't have an account, you need to click “**Register**” to register an account; if you already have an account, you can use the existing account to log in directly.

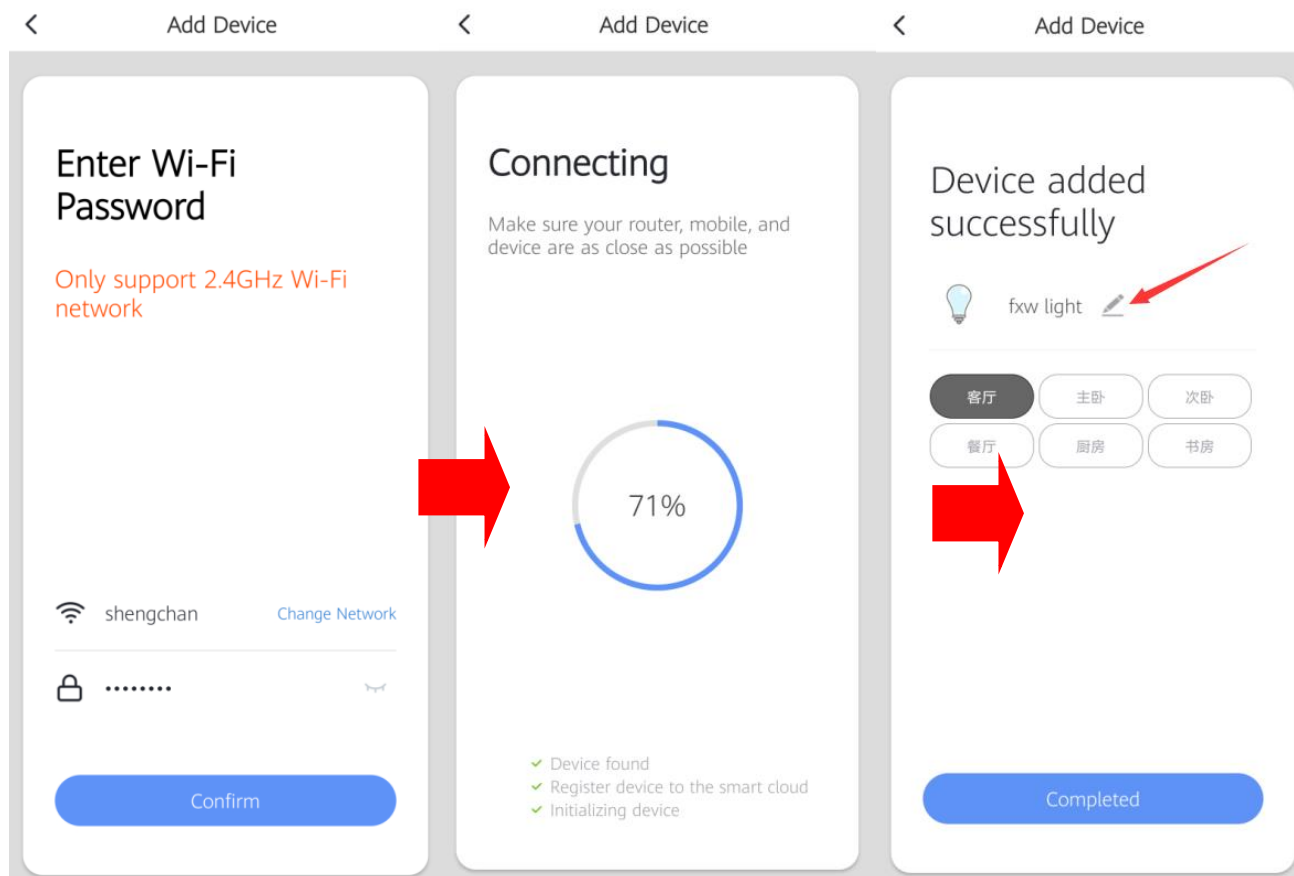


5. After registration, log in and enter the homepage "Home", Click "Add Device" or "+" sign in the upper right corner to add a device, Select the "Lighting" line item in the Add Manually column, select the "Lighting(Wi-Fi)" go to the "Add device" page; At this time, the light flashes quickly, then click "Confirm indicator rapidly blink" If the light output does not flash quickly, Please follow the prompts until it flashes quickly, and then " Confirm indicator rapidly blink".



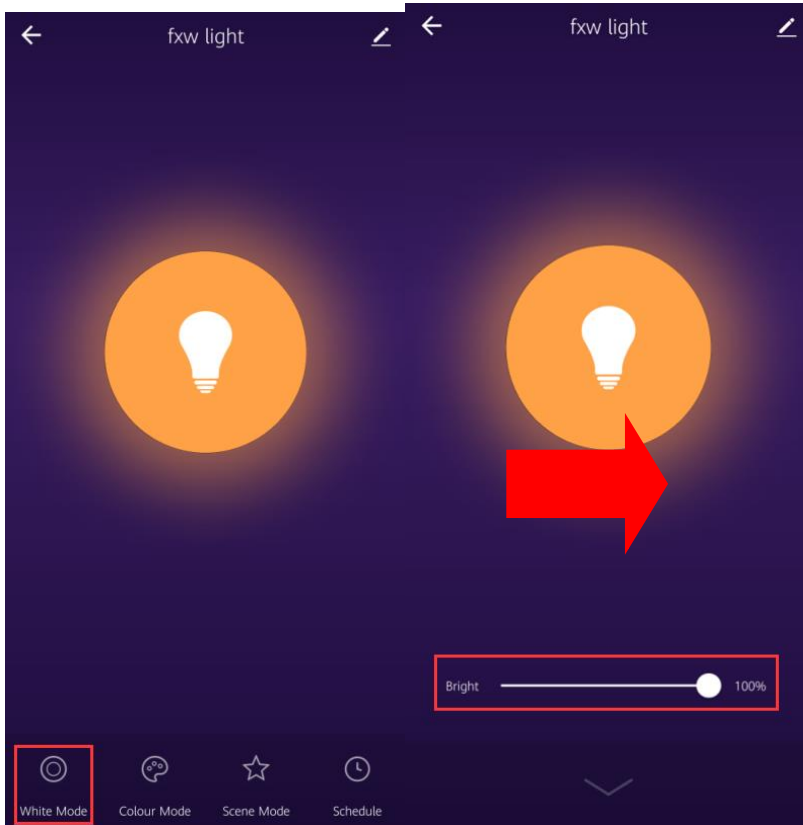
6. Select wifi routing network and password to connect, waiting for the controller to connect

successful, the output light will stop flashing fast. Device added successfully, you can customize the naming settings for the controller. And the controller can be assigned to 6 places such as living room, master bedroom and so on.

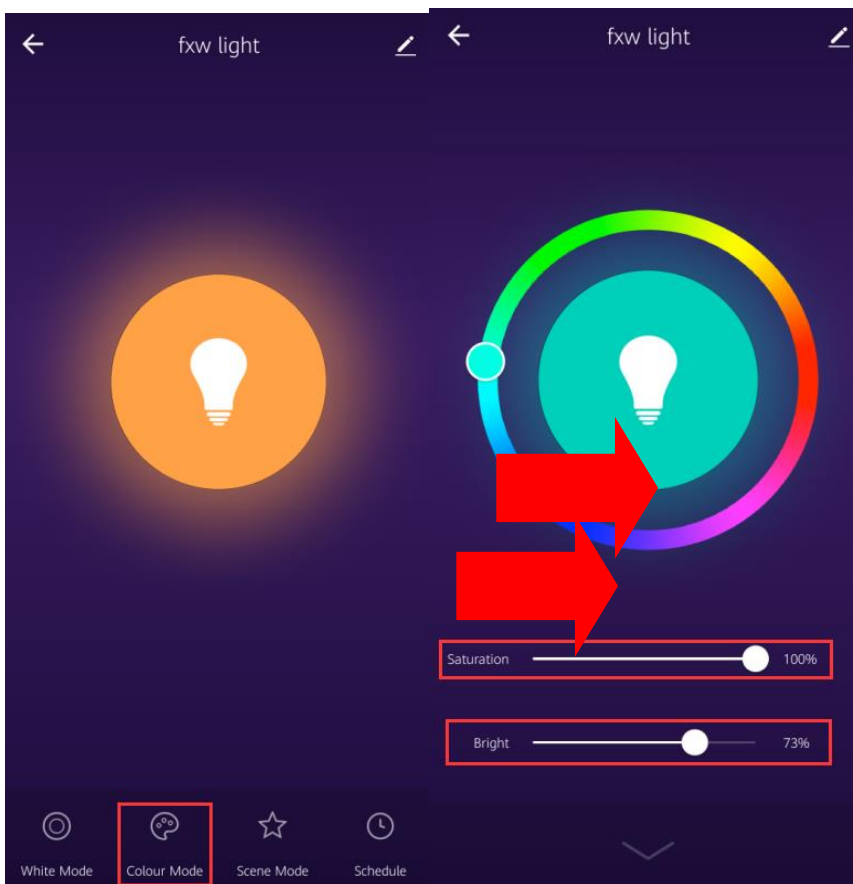


7. After adding devices, enter the light control interface, there are four options of “**White Mode**”“**Colour Mode**”“**Scene Mode**”“**Schedule**” to control the lights differently. **The middle bulb icon is a switch function in any mode.** The functions of each option are described as below:

①**White Mode:** Drag the brightness bar to **adjust the brightness** value of 0-100% for individual white light.



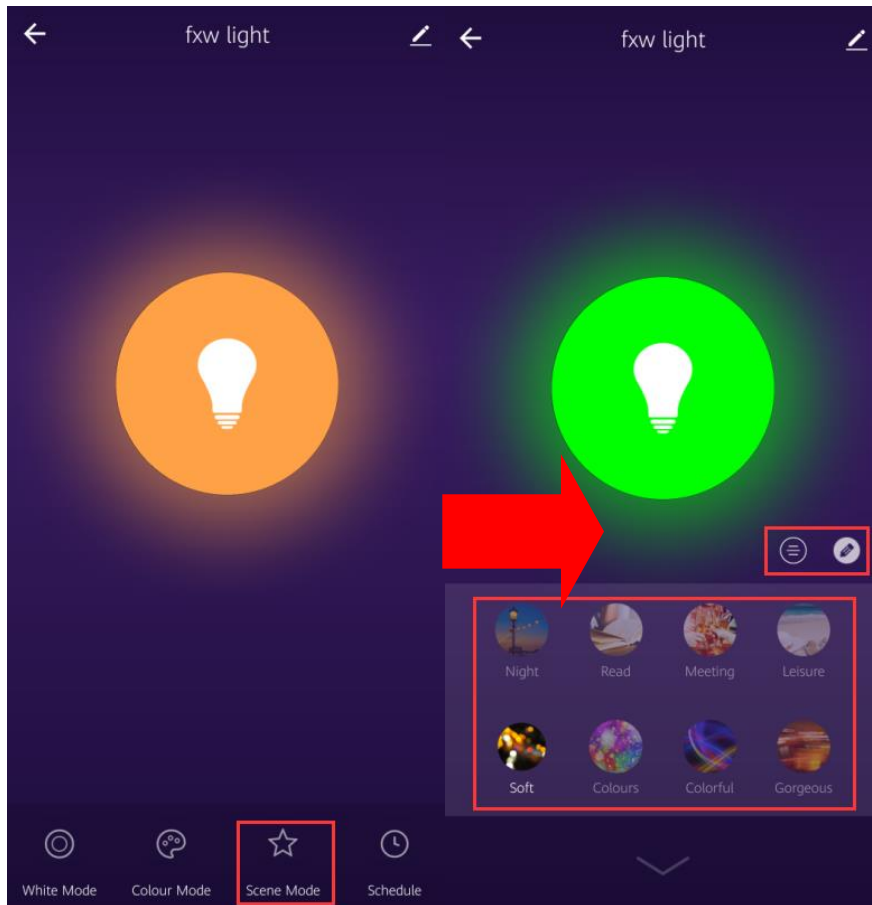
② **Colour Mode:** Touch the color ring to select any color, And adjust the "Saturation" and "Brightness" of the colored light by 0-100% through the two below bars.





③ **Scene Mode:** 8 modes in total, the above 4 modes are fixed monochrome static scenes, Non-adjustable settings. The following 4 modes are dynamic scene modes, can be "Set" and "edited" separately.





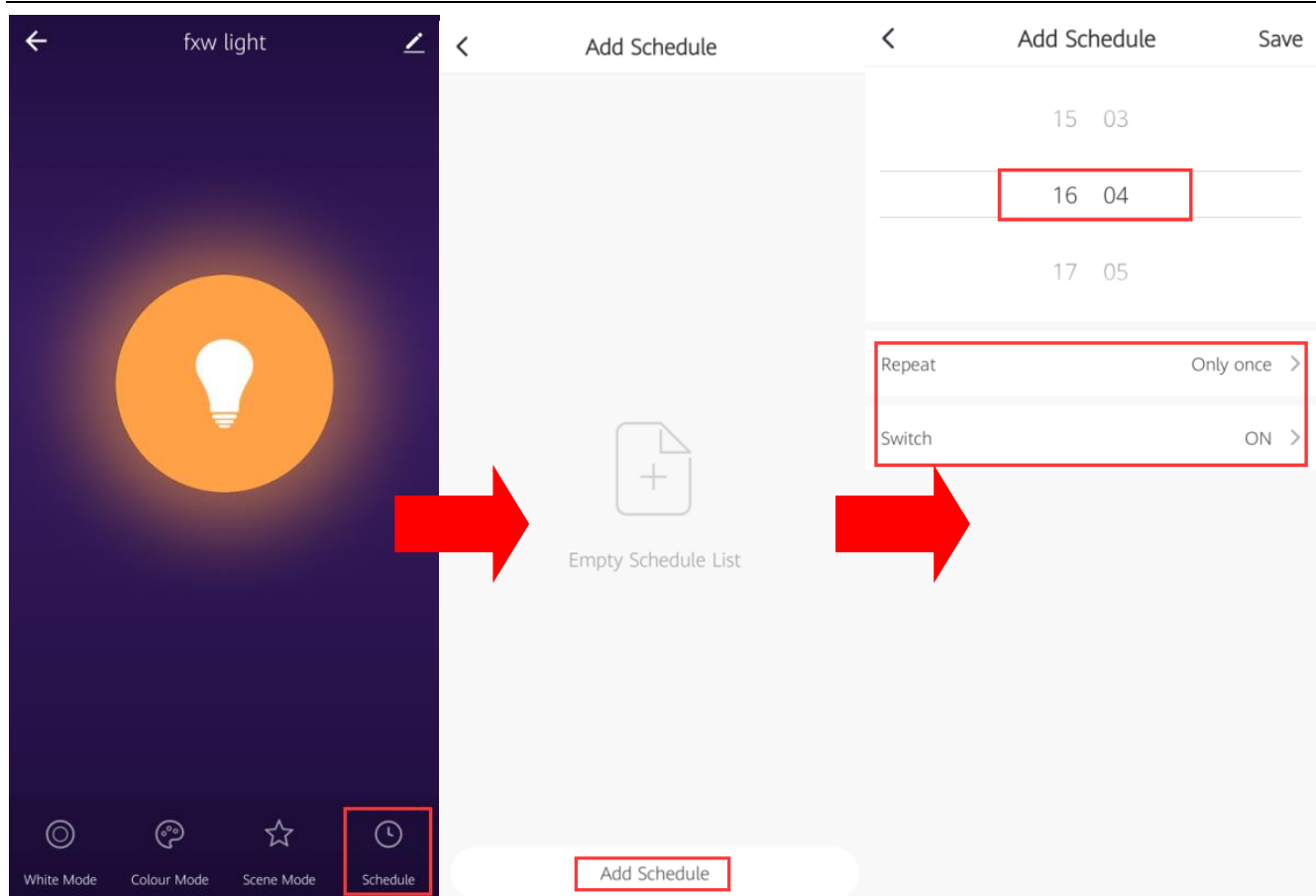


**8 modes description as below:**

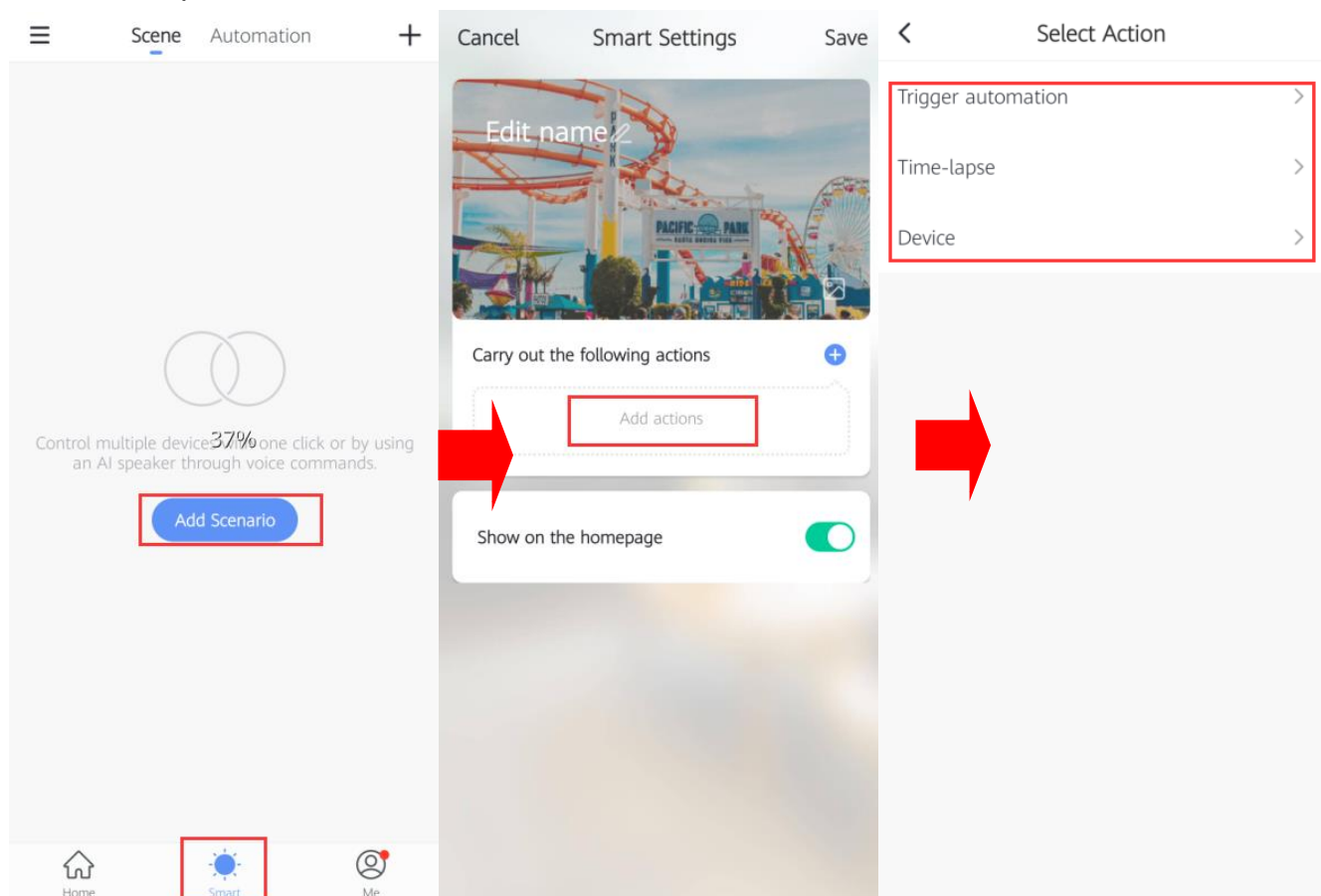
NO.	Mode	State effect	Saturation	Brightness	Speed	Setting function	Editing function
1	Night	Soft yellow	Unadjustable	Unadjustable	Unadjustable		
2	Read	Mixed white					
3	Meeting	Orange warm					
4	Leisure	Colder mixed white					
5	Soft	Monochrome breathing	adjustable	adjustable	adjustable	Saturation, brightness, speed 0-100% setting	Monochrome selectable
6	Colours	Colorful jumping					2-6 colors selectable
7	Colorful	Monochrome flash					Monochrome selectable
8	Gorgeous	Colorful fade					2-6 colors selectable

④**Schedule:** Can set the ON/OFF status of the light according to the actual required timing.  
**Note:** After setting the time, the APP on the mobile phone exits or disconnects the wifi, the schedule also works.

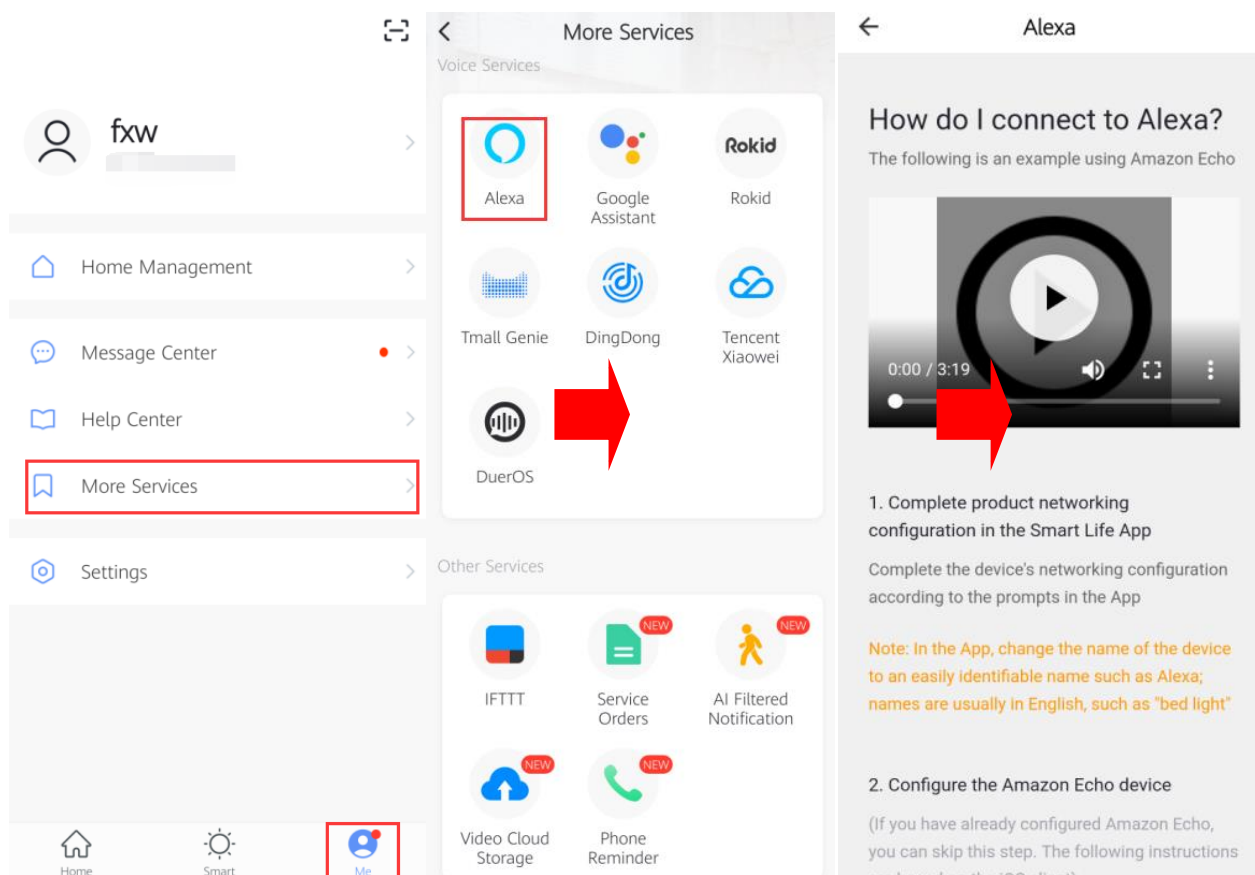




8. **Scenario mode setting:** Return to the homepage and select the "Smart" can add scenes to control multiple controllers or devices.

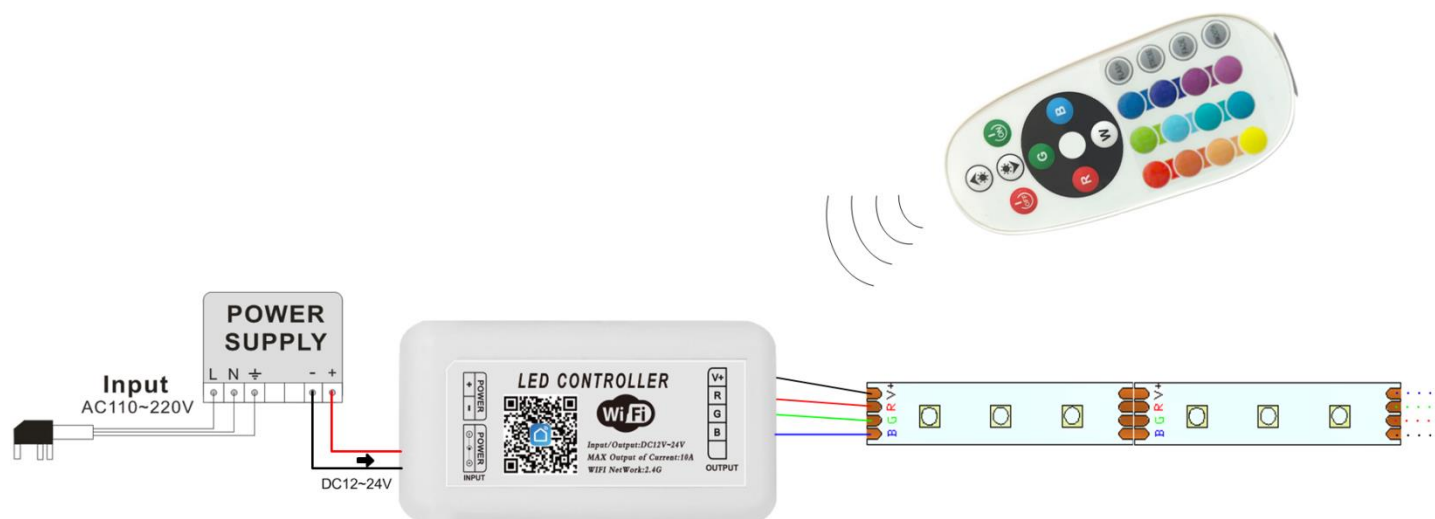


9. **Voice assistant service:** The controller is compatible with **Alexa, Google Assistant, Rokid, Tmall Genie, Ding Dong, Tencent Xiaowe** and other intelligent voice devices, it can control the lights by connecting smart voice devices. For specific connection methods and instructions, please follow the corresponding device instructions. As shown by Alexa:



**Other services:** The controller is also compatible with various services such as IFTTT.

## Connection diagram



**Cautions:**

- 
1. This product only use on supply voltage DC12-24V, do not input on other voltage.
  2. The lead wire shall be according to the wiring diagram of the color and label, connect correctly.
  3. This product can not be overloaded.
  4. Do not put the controller in a wide range of use metal area, or near a strong electromagnetic wave area, otherwise it will seriously affect the communication distance.