

SCHAEFER OUTFITTER



FOR LAND FOR LIFE

We were born in the shadows of the Tetons. Raised in a setting equal parts unforgiving and unforgettable. With craggy granite spires looming overhead and majestic carpets of green and gold underfoot, we knew early on how lucky we were to be from such a place.

Established in 1982 in Jackson Hole, Wyoming by Cub Schaefer, we wholeheartedly dedicated ourselves to an American tradition forgotten by most. The West forever shaped us and our ideas of how to craft functional western apparel made to stand the test of time and the task at hand.

For over 40 years we've been caretakers of a lost way of life. Champions of a long hard day's work. Old friends with every rancher, farmer, horseman and cowboy who spend their lives with the sun on their face and the elements beating at their back. We're providers of shelter, comfort and peace of mind.

Schaefer Outfitter has geared up generation after generation with everything they need to live a purposeful life working the hallowed lands their ancestors sacrificed everything for. We know how much everything means, so we do our damndest to make everything right. Every stitch has meaning. Each rivet has a mission. We've worked a lifetime to ensure whatever we make lasts the rest of yours.



SHOP THE DIGITAL VERSION

Scan the QR code below to shop the digital version of the catalog and click straight through to your favorites.



SCAN TO SHOP



Slub Twill Shirt With Snaps

A rugged 100% cotton slub twill work shirt built to withstand anything thrown its way. With timeless Western detailing, snap front pockets, and a button-down collar, this classic shirt is as authentic as it gets.

\$90 | **Sizes:** S-2XL, LT, XLT | **Material:** 100% Cotton Slub Twill
Colors: Olive (shown), Khaki



NEW

Short Sleeve Vintage Cotton Pearl Snap Shirt

A breathable, lightweight, 100% cotton short sleeve option that will keep you looking and feeling good in warmer temperatures.

\$65 | **Sizes:** S-2XL, LT, XLT | **Material:** 100% Cotton
Colors: Bartlett, Waurika (shown)



Classic Western Denim Snap Shirt

This 100% cotton denim snap shirt pays homage to the iconic denim Western shirts of the '90s. Pre-washed to fend off any unwanted shrinkage and enzyme-washed for that perfect worn-in feel.

\$100 | **Sizes:** S-2XL, LT, XLT | **Material:** 100% Cotton Denim



LIGHT WASH

DARK INDIGO (SHOWN)

NEW COLOR

Western Denim Snap Shirt

A classic Western denim silhouette with triple needle construction for superior durability, added stretch for mobility and comfort, and solid brass signature collar stand button for a traditional look.

\$100 | **Sizes:** S-2XL, LT, XLT | **Material:** 97% Cotton, 3% Elastane



NEW: SAGE (SHOWN)

RUST

KHAKI

CARBON



Western Stretch Snap Shirt

Inspired by rodeo style shirts from the '80s and '90s, this shirt offers just the right amount of punch for those who like to stand out from the crowd. Crafted with a bit of stretch for added mobility and comfort, it's perfect for wearing in or out of the saddle.

\$100 | **Sizes:** S-2XL, LT, XLT | **Material:** 98% Cotton, 2% Elastane



LAREDO

BANDERA

DEL RIO (SHOWN)





DOUBLE VENTING WITH BREATHABLE MESH

ANTI-MICROBIAL TREATMENT TO REDUCE ODOR

PEARL SNAPS

6% STRETCH FOR COMFORT

HIDDEN ZIP POCKET

MICROFIBER PATCH FOR SUNGLASS CLEANING

RANGETEK WESTERN GUIDE SNAP SHIRT

YOUR NEW FAVORITE SHIRTS

NOW AVAILABLE IN SHORT SLEEVE

There are work shirts, and then there are shirts that just work in any situation and in any season. Based on years of feedback, the RangeTek Western Guide Snap Shirt is the ultimate in performance - an unmatched blend of UV protection, comfort, breathability, durability, and style. Packed with functional features, it comes in 18 different colors and patterns (because when your customers wear it every day, they start to demand some variety). See for yourself what the hype is all about.

NEW COLORS!
RangeTek Western Guide Snap Shirt Prints



BLUE PLAID BLUE STRIPE RODEO BLANKET SNAKE BACK SOUTHWESTERN SEA NEW PADRE NEW ALLEN NEW CHANNING

RangeTek Western Guide Snap Shirt Solids



BLACK SALTWATER WHITE KHAKI SUNTAN RUST OLIVE

NEW!
Short Sleeve RangeTek Western Guide Snap Shirt



GALVESTON WHITE SAGE

Long Sleeve Solids: \$90 | Long Sleeve Prints: \$95 | Short Sleeve Solids: \$80 | Short Sleeve Plaid: \$85
 Sizes: S-3XL, LT-2XLT | Material: 94% Nylon, 6% Spandex

DON'T TAKE OUR WORD FOR IT!
OUR CUSTOMERS LOVE RANGETEK

★★★★★
4.8/5 STARS

97% OF CUSTOMERS RECOMMEND RANGETEK



ALL NEW: RANGETEK FOR WOMEN. OUR BEST-SELLING PERFORMANCE SHIRT WITH ALL THE FEATURES YOU LOVE, DESIGNED TO FIT AND FLATTER HER. PAGE 33





Classic Western Button Down With Snaps

A durable button-down shirt with added stretch for all-day comfort and mobility. The perfect everyday shirt for work, play, and everything else in between.

\$110

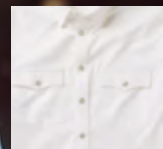
Sizes: S-2XL, LT, XLT

Material: 97% Cotton, 3% Spandex

Colors: Black, White, Presidio (shown)



BLACK



WHITE



Jesse Western Shirt

A lightweight and tailored Western snap shirt with 1940s rodeo cuff, yoke styling, and functional smile pockets. Crafted from TENCEL® for durability and breathability.

\$110 | Sizes: S-2XL, LT, XLT

Material: 88% TENCEL, 12% Cotton

Color: Light Wash



Classic Western Pinpoint Button-Down

A traditional Western pinpoint dress shirt made from 100% cotton and finished off with button front chest pockets and Western yoke detailing. A must-have Western dress shirt for special occasions.

\$110 | Sizes: S-2XL, LT, XLT

Material: 100% Cotton Pinpoint

Colors: Blue, White

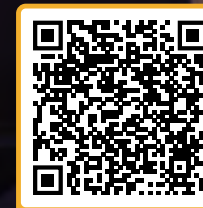
SCHAEFEROUTFITTER.COM



INTRODUCING

XIT + SCHAEFER OUTFITTER

We've partnered with the legendary XIT Ranch to craft garments that embody the legacy of hard work and resilience. Our collaboration honors traditional values by producing durable, purpose-built clothing for those devoted to the land and the rigors of ranch life. Both items were built with input from the XIT team to stand up to the demands of their working garment needs - today, tomorrow, and every day after that which requires hard work.



READ MORE



ZIP CANVAS JACKET

IN DALHART

LEARN MORE ON PAGE 12



RANGETEK WESTERN GUIDE

SNAP SHIRT

IN CHANNING

LEARN MORE ON PAGE 6

Canvas Collection

You can always count on two things: the weather not cooperating, and Schaefer Outfitter Canvas performing regardless. A calling card for as long as we've been in business, you'll find our trademark Fenceline® and Brushcloth® Canvas protecting folks from the bluster and brush all across the west.



Shown L to R: NEW Zip Canvas Jacket (p. 12), Women's Fenceline® Brush Jacket (p. 31), Brushcloth® Vest, Women's Fenceline® Ranch Jacket (p. 30), Original Drifter Coat (p. 13)

See the full Canvas Collection at SCHAEFEROUTFITTER.com



Brushcloth® Ranch Hand Dungarees

Our most durable work pant that stands up to hard work and tough terrain.

\$90 | **Waist:** 30, 31, 32, 33, 34, 36, 38, 40, 42, 44, 46
Inseam: 30, 32, 34, 36 | **Material:** 15 oz. Brushcloth® Canvas
C6 DWR Finish | **Color:** Suntan



Fenceline® Vest

Our best-selling vest silhouette is built from a 10.10 Superdry cotton canvas shell with a DWR finish and features our classic six-pocket front and inside left chest pocket.

\$115 | **Sizes:** S-3XL | **Material:** 10.10 Superdry Canvas with DWR Finish
Colors: Natural, Saddle, Suntan



Fenceline® Brush Jacket

Our iconic jacket silhouette built from a 10.10 Superdry cotton canvas shell with a DWR finish.

\$165 | **Sizes:** S-3XL, XLT, 2XLT | **Material:** 10.10 Superdry Canvas with DWR Finish | **Colors:** Chamois, Saddle



NEW

1. Zip Canvas Jacket

A rugged water-resistant jacket that protects from the elements without restricting movement.

Features 10.10 Superdry Canvas with DWR Finish, a bi-swing at the back armhole for mobility, 2-way zippered storm front flap with snap closures, a 6-pocket front and interior chest pocket.

\$195 | **Sizes:** S-3XL, XLT, 2XLT
Material: 100% Cotton Canvas with DWR Finish



ALSO AVAILABLE IN DALHART
 IN PARTNERSHIP WITH XIT

2. Brushcloth® Vest

A heavy-duty workwear vest to protect your core from unwanted abrasions in demanding terrain.

Features 15 oz. Brushcloth® Canvas with DWR finish, a 4-pocket front with left chest pen slot and internal chest pocket, and sturdy brass button front closure.

\$125 | **Sizes:** S-3XL
Material: 15 oz Brushcloth® Canvas
Color: Suntan

3. Fenceline® Ranch Hand Dungarees

A lightweight straight leg canvas work pant featuring durable canvas and a built-in tool pocket on the left leg.

\$90 | **Waist:** 30, 31, 32, 33, 34, 36, 38, 40, 42, 44, 46
Inseam: 30, 32, 34, 36
Material: 10.10 Superdry Canvas with DWR Finish
Colors: Wood (shown), Suntan

4. Original Drifter Coat

This traditional in-saddle coat is a Schaefer original that's been protecting cowboys and ranchers on the range for decades.

\$275 | **Sizes:** S-3XL
Material: 10.10 Canvas with DWR Finish
Colors: Natural (shown), Suntan

5. Zip Canvas Vest With Sherpa Lining

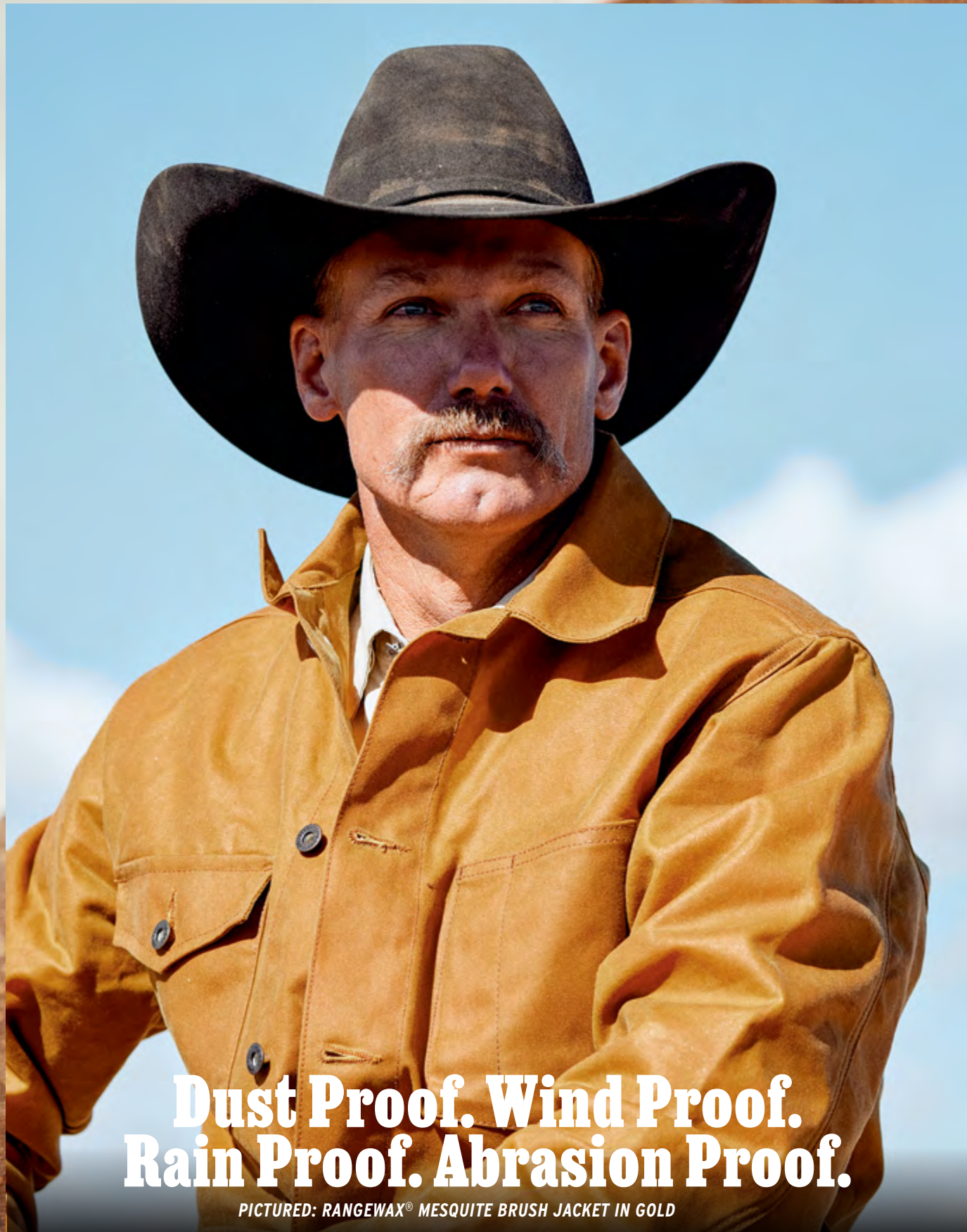
A warm sherpa-lined vest with cotton corduroy Western details.

\$155 | **Sizes:** S-3XL | **Material:** 10.10 Superdry Canvas with DWR Finish
Colors: Suntan (shown), Natural

6. Brushcloth® Jacket

Our heaviest 15 oz. iconic canvas jacket made for work in the densest brush.

\$175 | **Sizes:** S-3XL, XLT-2XLT
Material: 15 oz. Canvas | **Color:** Suntan



**Dust Proof. Wind Proof.
Rain Proof. Abrasion Proof.**

PICTURED: RANGEWAX® MESQUITE BRUSH JACKET IN GOLD

RangeWax® from Schaefer Outfitter

NEXT-LEVEL WEATHERPROOFING | RANGEWAX® IS NOW AVAILABLE FOR WOMEN - SEE PAGE 30



NEW COLOR

RangeWax® Mesquite Brush Jacket

Resistant to water and abrasions, this unlined jacket has quickly become our best-selling product. It is crafted from the highest-quality waxed cotton canvas and features a six pocket front for ample storage, a pen slot on the left chest, an internal chest pocket, and antique brass buttons.

\$245 | **Sizes:** S-3XL | **Material:** 100% Waxed Cotton Canvas
Colors: Sand, NEW Gold (shown on facing page), Oak

RangeWax® Mesquite Vest

Free your arms and keep the protection of waxed cotton canvas and convenience of a 6-pocket front. This vest offers all the features of the RangeWax® Mesquite Brush Jacket with a bit of added mobility.

\$175 | **Sizes:** S-3XL | **Material:** 100% Waxed Cotton Canvas
Colors: Oak, Sand



RangeWax® High Plains Drifter Jacket

With eight total pockets for maximum storage, this thigh-length drifter is perfect for the range. The two-way storm flap front, adjustable cuffs, snap-out side riding vents and cinchable waist will keep you comfortable and dry no matter the weather.

\$285 | **Sizes:** S-3XL | **Material:** 8.6oz (finished) Waxed Canvas Shell, 100% Nylon Taffeta Lining, 100% Bovine Leather Collar & Trim | **Colors:** Loden, Oak



ONE-OF-A-KIND PERFORMANCE MIDLAYERS

Carbondale Fleece

Designed with versatility in mind, Carbondale is more than just fleece - it's a new approach to layering.



Carbondale Pullover

100% Polar Fleece, Water-Resistant Nylon and a Sherpa Collar blend together perfectly in this midlayer performance marvel. With a quarter-zip front, four pockets, and easy pull zip tabs, you'll be warm, dry, and comfortable all day long.

\$175 | Sizes: S-2XL | Material: 100% Polyester Fleece (non-pilling), 100% Nylon Overlay with PFC-free Water Resistant Finish
Colors: Charcoal, Olive

NEW

Carbondale Vest

Crafted with 100% Polar Fleece and reinforced with a water-repellent nylon overlay, this coldfront conqueror also brings ample pocket space and elastic arm openings for maximum comfort.

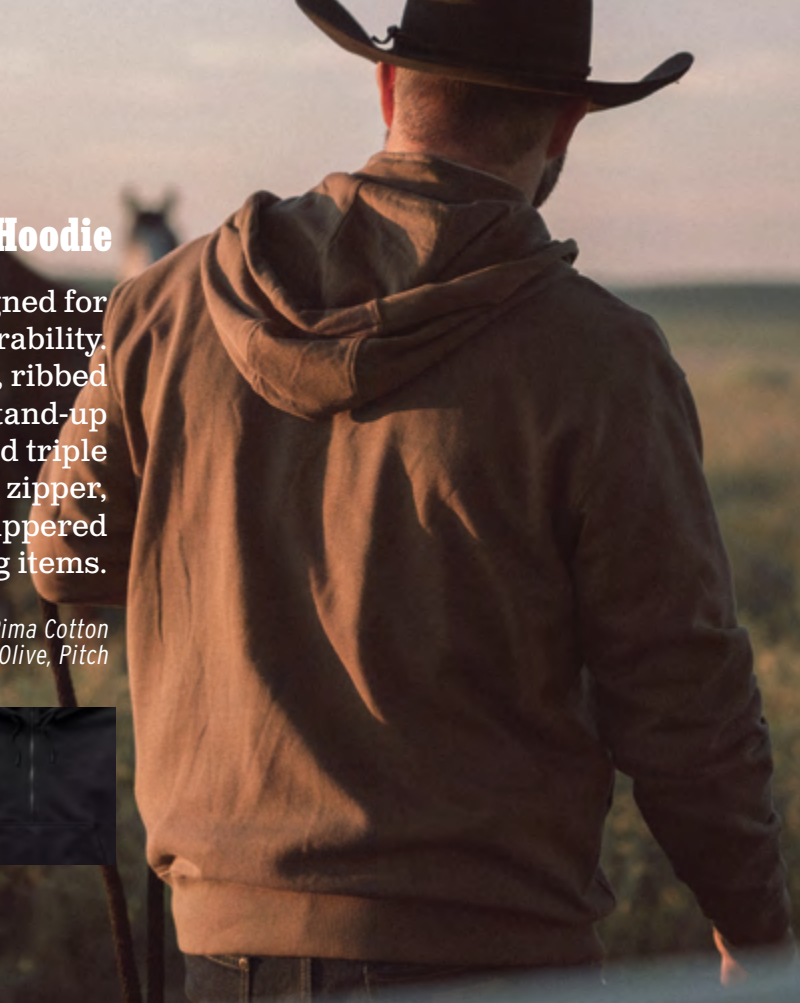
\$145 | Sizes: S-2XL | Material: 100% Polyester Fleece (non-pilling), 100% Nylon Overlay with PFC-free Water Resistant Finish
Color: Charcoal

SCHAEFEROUTFITTER.COM

Storm Cotton Hoodie

A premium all-weather hoodie designed for ultimate comfort, warmth, and durability. Features a half zip for easy on/off, ribbed cuffs and waist, 3-panel hood, stand-up collar to protect your neck, double and triple needle stitching, a YKK VISLON® zipper, ultra-soft dense fleece, and large zippered kangaroo pockets for securing items.

\$175 | Sizes: S-2XL | Material: 100% Pima Cotton
Colors: Blaze, Olive, Pitch



Jackson Vest

Based on an original Cub Schaefer design from the '80s and built with water-repellent nylon and corduroy to defend against snow and light rain.

\$175 | Sizes: S-3XL | Material: 72% Nylon 28% Cotton Shell & Lining, 100% Cotton Corduroy Yoke

STILL COLD IN YOUR PART OF THE COUNTRY?
 SHOP MORE LIKE THE JACKSON VEST AT SCHAEFEROUTFITTER.COM

LEATHER VESTS



1. Wyoming Vest

A remake of our iconic vest from the '80s featuring a DWR-finish polyester shell and lambskin Western yoke.

\$295 | **Material:** 100% Polyester Shell, 100% Lambskin Yoke, 100% Nylon Lining
Sizes: S-3XL

2. Colorado Vest

A soft and supple suede vest crafted with premium goat suede and filled with 100% PCR Polyfill for warmth.

\$495 | **Material:** 100% Goat Suede | **Sizes:** S-3XL

3. Bowie Vest

A classic full grain leather vest with front and back western yoke and sturdy brass buttons.

\$245 | **Material:** 100% Leather | **Sizes:** S-3XL, LT-2XLT

Texas Ranger Foundation

Since 1823, the Texas Rangers have stood vigilant protecting the citizens of the state of Texas. In honor of their bravery and service, Schaefer is proud to offer this exclusive commemorative collaboration with the Former Texas Rangers Foundation.

A portion of proceeds are donated to the Texas Ranger Heritage Center in Fredericksburg.



Texas Ranger McAllin Vest

\$145
Material: 15oz Legacy Melton Wool (85% Wool, 15% Nylon) Shell, 100% Polyester Taffeta Lining, 100% Bovine Leather Trim
Sizes: S-3XL, XLT-2XLT

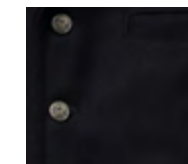
Texas Ranger Brush Jacket

\$165
Material: 10.10 Army Duck
Sizes: S-3XL, XLT-2XLT

Cattle Baron Vest

Built from 22 oz. Legacy Melton Wool™ and lined with premium taffeta, this hand-tailored frontier style vest provides an undeniably sharp and fitted look.

\$155 | **Sizes:** S-3XL | **Material:** 22 oz. Melton Wool (85% Wool, 15% Nylon) Shell, 100% Polyester Taffeta Lining



BLACK



CHARCOAL (SHOWN)



DIAMOND A RANCH



THE DIAMOND A RANCH, ALSO KNOWN AS THE “BIG BOQUILLAS,” IS THE LARGEST CATTLE RANCH TODAY IN ARIZONA.



The Diamond A was originally the headquarters for the VV Livestock Company that encompassed over half of Northern Arizona, running 30,000 cows and 1,500 horses.

Purchased in 1987 by the Navajo Nation, the ranch covers 750,000 acres and stretches 75 miles from the town of Seligman, Arizona to the South Rim of the Grand Canyon. For over 40 years, the Diamond A Ranch has been leased by Cholla Livestock, a division of K4 Ranches. With a strong commitment to the preservation of ranching heritage and the land, livestock and wildlife habitats, Cholla Livestock has remained a leader throughout the Southwest in beef cattle production.

The extensive cattle operation on the Diamond A helps supply many of the country's finest All-Natural Beef programs including K4 Ranches direct-to-consumer beef platform, K4 Gourmet Beef. The Wholesale division, K4 CopperState Reserve, is a feature at many of the Southwest's finest restaurants.

There are 14 full-time cowboys and 10 full-time maintenance employees who look after the massive and rugged high desert ranch landscape of the Diamond A that includes 1,115 miles of fences, 135 dirt ponds, 44 corrals and 425 miles of water pipelines.

The horses, cattle and cowboys of the Diamond A are part of an old cowboy tradition that radiates throughout the Southwest, dating back to the turn of the century and proudly continuing today.

PROUDLY WORN AT DIAMOND A RANCH

"I've had my Schaefer coat for years and it's proven to be durable and warm. When you work in the high desert, you need clothes you can depend on, and with Schaefer, we never have to think twice. We're proud to support an authentic brand that cares about our way of life as much as we do."

- Josh Keller, Diamond A Ranch Manager





Western Wool Staples

The Wool Arena Vest and Jacket are dapper, durable, versatile, and in high demand year in and year out. Need something to keep you warm without cooking you when the temperature rises? Sturdy enough to work without being bulky, and still looks good in town? Simply step into the Arena.

Now available by popular demand for women on page 32.

Looking for more wool? Check out our full wool collection at schaeferoutfitter.com



Wool Arena Jacket

- 22 oz. Melton Wool™ Exterior
- Polyester Taffeta Lining
- 2-Way Zipper
- 2 Large Hand Pockets
- 2 Interior Chest Pockets
- Adjustable Cuffs

\$195 | **Sizes:** S-2XL
Material: 22 oz. Legacy Melton Wool™ (85% Wool, 15% Nylon) Shell, 100% Polyester Taffeta Lining
Colors: Black, Heather Gray



Wool Arena Vest

- 22 oz. Melton Wool™ Exterior
- Polyester Taffeta Lining
- 2-Way Zipper
- 2 Large Hand Pockets
- 2 Interior Chest Pockets
- Classic Fit

\$165 | **Sizes:** XS-3XL
Material: 22 oz. Legacy Melton Wool™ (85% Wool, 15% Nylon) Shell, 100% Polyester Taffeta Lining
Colors: Black, Heather Gray, Taupe

WESTERN GOES EVERY DIRECTION



GO OUTDOORS

Storm Cotton Hoodie
 Page 17 | Shown in Blaze
Fenceline Canvas Dungarees
 Page 13 | Shown in Suntan
SO Trucker | Page 34



GO COWBOY

Western Stretch Snap Shirt
 Page 5 | Shown in Bandera
Original Ranch Hand Dungarees
 Page 24 | Shown in Medium Wash



GO OUT

Classic Western Button Down With Snaps
 Page 8 | Shown in White
Straight Leg 5-Pocket Pant
 Page 25 | Shown in Black

JEANS THAT LAST

“I just want to show you how my jeans have held up to a year straight worth of riding. I wear these jeans a week at a time, wash them, and wear them again. They look worn, but they have held up longer than any other jeans I have tried. They have endured rope burns, horseshoeing, grease, manure, horse sweat, and continual use. As a horse trainer, jeans that can take abuse are a high priority. Your Ranch Hand® jeans go above and beyond. I also keep a dark pair for nice. They come home from the dry cleaner’s sharp.”

Jake Flint

*Flint Training and Ranch Horses
Marsing, ID*



RANCH HAND® ORIGINAL DUNGAREES AFTER ONE YEAR OF DAILY USE

BRAND NEW RANCH HAND® ORIGINAL DUNGAREES



Ranch Hand® Original Dungarees

The dungarees that started it all. A high-rise fit and double needle tailoring throughout.

\$60 | **Material:** 14.5 oz. 100% Cotton Denim | **Rise:** High-Rise
Waist: 30, 31, 32, 33, 34, 35, 36, 38, 40, 42
Inseam: 30, 32, 34, 36, 38
Colors: Dark, Medium

Ranch Hand® Reserve Dungarees

All the same qualities of our original dungarees in a mid-rise fit.

\$60 | **Material:** 14.5 oz. 100% Cotton Denim | **Rise:** Mid-Rise
Waist: 30, 31, 32, 33, 34, 35, 36, 38, 40, 42
Inseam: 30, 32, 34, 36, 38
Colors: Dark, Medium



SCHAEFEROUTFITTER.COM



Straight Leg 5-Pocket Pant

Our newest dress pant offers a timeless straight-leg fit and classic 5-pocket styling. With a mid-rise waist and functional leather patch belt loop, it’s both sophisticated and practical.

\$85 | **Material:** 99% Cotton, 1% Elastane
Waist: 30, 31, 32, 33, 34, 36, 38, 40, 42, 44, 46
Inseam: 30, 32, 34



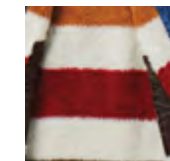
BLACK

KHAKI

Legend Denim Jacket With Fleece Blanket Lining

Our iconic denim jacket is crafted from 14.5 oz. 100% cotton denim and adorned with a full-grain leather collar. Features an ultra-soft fleece blanket lining, premium taffeta lined sleeves for easy on and off, a four-pocket front, antique brass buttons, and timeless Western styling.

\$195 | **Material:** 14.5 oz. 100% Cotton Denim, Full-Grain Leather Collar, 100% Polyester Lining
Sizes: S-3XL



LINING DETAIL



FOR LAND, FOR LIFE SINCE 1982

Stay cool in our new Short Sleeve Vintage Cotton Shirts for men (p. 3) and RangeTek for women (p.33)



HOT OR COLD, WE'VE GOT YOU COVERED

Springtime weather can go 0 to 100 in a hurry. We've got both ends of the spectrum covered with a wide range of clothes that work.



Stay warm in our insulated drifters and Wool Collection for men and women at schaeferoutfitter.com



LIMITED EDITION

LEATHER COLLECTION

Leather has been a staple in Western culture for centuries, and we're proud to add to that legacy. These heritage garments are designed for the lives of cowboys and cowgirls and crafted with the finest materials we could get our hands on. Featuring small batch and limited edition pieces built to stay in the family for generations.

Shop the full Men's and Women's collection at schaeferoutfitter.com



Women's Suede Coat

Our best-selling women's coat is made from a calf-split suede, fully lined with a polyester blend, an ironed wool merino shearling collar, button front closure, a belted tie at the waist, and classic Western styling. A soft, supple, and comfortable coat that is sure to dress up any occasion.

\$595 | **Material:** 100% Suede Shell
55% Polyester 45% Viscose Lining,
100% Wool Shearling Collar | **Sizes:** XS-XL



Felina Jacket

Paying homage to the Chimayo styles of the 1940s, this beautiful and versatile piece features a black melton wool body and contrasting black cow suede sleeves, pockets, and collar. Fully lined and detailed with an antique brass zipper and waist tab buckles, its the perfect addition to any cowgirl's wardrobe

\$395 | **Material:** Body - 80% Wool, 20% Polyester, 100% Polyester Lining, 100% Cow Suede Sleeves, Pockets, and Collar
Sizes: XS-XL

JEANS THAT WORK IN-SADDLE AND OUT

Women's Jeans

WIDE LEG

Dallas Jean

A traditional wide leg, high-rise Western jean that transitions seamlessly from in the saddle to downtown. Crafted with a bit of stretch for added mobility and designed to taper from the thigh to the knee.

\$110 | **Material:** 98% Cotton, 2% Spandex
Rise: 10" | **Waist:** 25, 26, 27, 28, 29, 30, 31, 32, 33
Inseam: Regular (31 3/4"), Long (33 3/4")
Colors: Dark, NEW Dark Indigo Rinse (shown below)

STRAIGHT LEG

Katy Jean

The ultimate classic cowgirl jeans made from 100% rigid cotton denim and ready to work. Designed with a wider leg opening to fit over boots, longer inseams for a stacked look, and belt loops to accommodate wider belts.

\$110 | **Material:** 100% Rigid Cotton Denim
Rise: 10 7/8" | **Waist:** 25, 26, 27, 28, 29, 30, 31, 32, 33
Inseam: Regular (32"), Long (34")
Colors: Dark Wash, Medium Indigo (shown below)



NEW COLOR



INDIGO



NEW LIGHT WASH (SHOWN ABOVE)



NEW COLOR

Women's Unlined Denim Jacket

A traditional women's Western denim trucker jacket made from 14.5 oz. denim. It features a cowhide leather collar and button-closure chest pockets, angled handwarmer pockets, and adjustable back tabs at the waist.

\$175 | **Material:** 100% Cotton Denim Shell, 100% Full-Grain Leather Collar | **Sizes:** XS-2XL

FOR LAND, FOR LIFE SINCE 1982

Women's Unlined Denim Chore Coat

Our women's unlined denim coat is crafted from 100% rigid cotton denim and features a water-repellent corduroy collar, a three-pocket front, button closure, and corduroy-lined cuffs.

\$145 | **Material:** 100% Rigid Cotton Denim, 100% Cotton Corduroy with Water Repellent Finish | **Sizes:** XS-2XL



Women's RangeWax® Mesquite Brush Jacket

Intentionally designed with the cowgirl in mind. Made from the same waxed cotton canvas and other materials as our men's jacket but cut to fit a women's figure.

\$245 | **Material:** 10.10 Waxed Cotton Canvas | **Sizes:** XS-2XL
Colors: Moss, Sand (shown below)



Women's Fenceline® Ranch Jacket

With a two-way zipper and quilted lining for comfort and convenience, this jacket handles the rough chores of a working ranch while dressing up nicely.

\$195 | **Material:** 10.10 Superdry Cotton Canvas with DWR Finish | **Sizes:** XS-2XL
Colors: Saddle, Washed Navy (shown)



Women's Fenceline® Vest

An everyday workwear vest made from a 10.10 Superdry Cotton Canvas with a DWR finish, classic 6-pocket front, external pen slot, and internal chest pocket.

\$115 | **Material:** 10.10 Superdry Cotton Canvas with DWR Finish | **Sizes:** XS-2XL
Colors: Natural (shown below), Saddle



Women's Fenceline® Brush Jacket

Introducing a lightweight, all-season workwear jacket. Built from a 10.10 Superdry Cotton Canvas with a DWR finish and a corduroy collar. Features our classic six-pocket front for storage, a pen slot on the left chest pocket, an inside left chest pocket, and antique brass buttons.

\$165 | **Material:** 10.10 Superdry Cotton Canvas with DWR Finish, 100% Cotton Corduroy Collar
Sizes: XS-2XL | **Colors:** Chamois (shown), Suntan



Women's Wool Arena Jacket

Our best-selling women's wool jacket is perfect for everything in the arena and out of it. Made from a Melton wool blend and lined with a polyester taffeta. Features a two-way zippered front, two large hand pockets, interior chest pockets, and adjustable cuffs.

\$195 | **Material:** 22 oz. Legacy Melton Wool™ (85% Wool, 15% Nylon) Shell, 100% Polyester Taffeta Lining | **Sizes:** XS-2XL
Colors: Heather Gray, Black



Cheyenne Wool Vest

A wool vest designed and cut to have a more tailored fit. Made from a Melton wool blend and lined with a polyester taffeta for easy on and off. Features a two-way zippered front, welt pockets, adjustable back tabs, and two large zippered hand pockets.

\$155 | **Material:** 22 oz. Legacy Melton Wool™ (85% Wool, 15% Nylon) Shell, 100% Polyester Taffeta Lining | **Sizes:** XS-2XL
Colors: Heather Gray, Black



ALL NEW

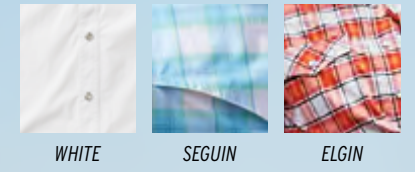
WOMEN'S RANGETEK

We're proud to introduce Women's RangeTek: All the features and performance of our legendary RangeTek shirts, now cut for cowgirls. Melding form with function, these shirts offer the same trusted durability and protection against the elements, all in a sharp-looking true-to-size silhouette that aims to mimic the style and strength of the women it's made for.

- UPF 50+ Protection
- 6% Stretch for Comfort
- Antimicrobial Treatment
- Pearl Snap Buttons

Women's RangeTek Western Guide Snap Shirt

Plaids: \$95 | Solid: \$90 | Sizes: XS-2XL
Material: 94% Nylon, 6% Spandex



Women's Western Denim Pearl Snap Shirt

The quintessential staple for every cowgirl's wardrobe. Our women's denim pearl snap is made from 8.4 oz. cotton denim with classic Western detailing throughout. Features snap front chest pockets with a pen slot on the left chest, and a three-snap cuff. Pre-washed to prevent shrinking.

\$100 | Material: 100% Cotton | Sizes: XS-2XL | Colors: Medium Indigo, Light Wash (shown)

Women's Western Snap Shirt

A traditional women's Western snap shirt made from a lightweight and breathable cotton and TENCEL® blend. Features Western detailing on the yokes and pockets, 1940's rodeo cuffs and styling, and a structured collar stand for a dressed up look.

\$110 | Material: Light Wash - 88% TENCEL®, 12% Cotton, Pitch/White - 58% TENCEL®, 42% Cotton | Sizes: XS-2XL | Colors: Light Wash, Pitch (shown), White
SCHAEFEROUTFITTER.COM



HIDDEN ZIP POCKET



BACK VENTING



MICROFIBER SUNGLASS CLEANING PATCH



TO TOP IT OFF
SCHAEFER HATS

\$30 | Shop Hats at SCHAEFEROUTFITTER.com

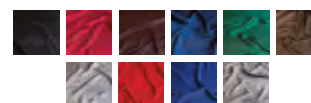
Truckers and strapback hats to represent your favorite in Western wear.

100% SILK
WILD RAGS



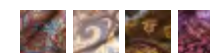
Frontier Jacquard Wild Rags

\$55 | Size: 35" x 35" | Colors: Black, Burgundy, Chocolate, Cobalt, Emerald, Olive, Red, Royal, Sage, Silver, Turquoise



Paisley Wild Rags

\$65 | Size: 35" x 35" | Colors: Burgundy/Blue/Olive, Cocoa/Burgundy, Maize/Copper, Purple/Burgundy, Rust/Red



Paisley Wild Rags With Border

\$65 | Size: 35" x 35" | Colors: Black/White/Gray, Green/Orange/Red, Blue/Orange/Red



Bandana Wild Rag

\$65 | Size: 35" x 35"

Scarf Slides



PAISLEY SCARF SLIDE \$50
CONCHO SCARF SLIDE \$50



1. Heavyweight Cotton Henley

An everyday heavyweight cotton henley designed for superior comfort and layering.

\$65 | Sizes: S-2XL | Material: 100% Cotton Colors: Salt, Olive



Graphic Tees

Crafted from premium 100% cotton, these durable graphic tees offer comfort for every season.

2. KICKIN' BEST TEE
\$30 | Sizes: M-XL

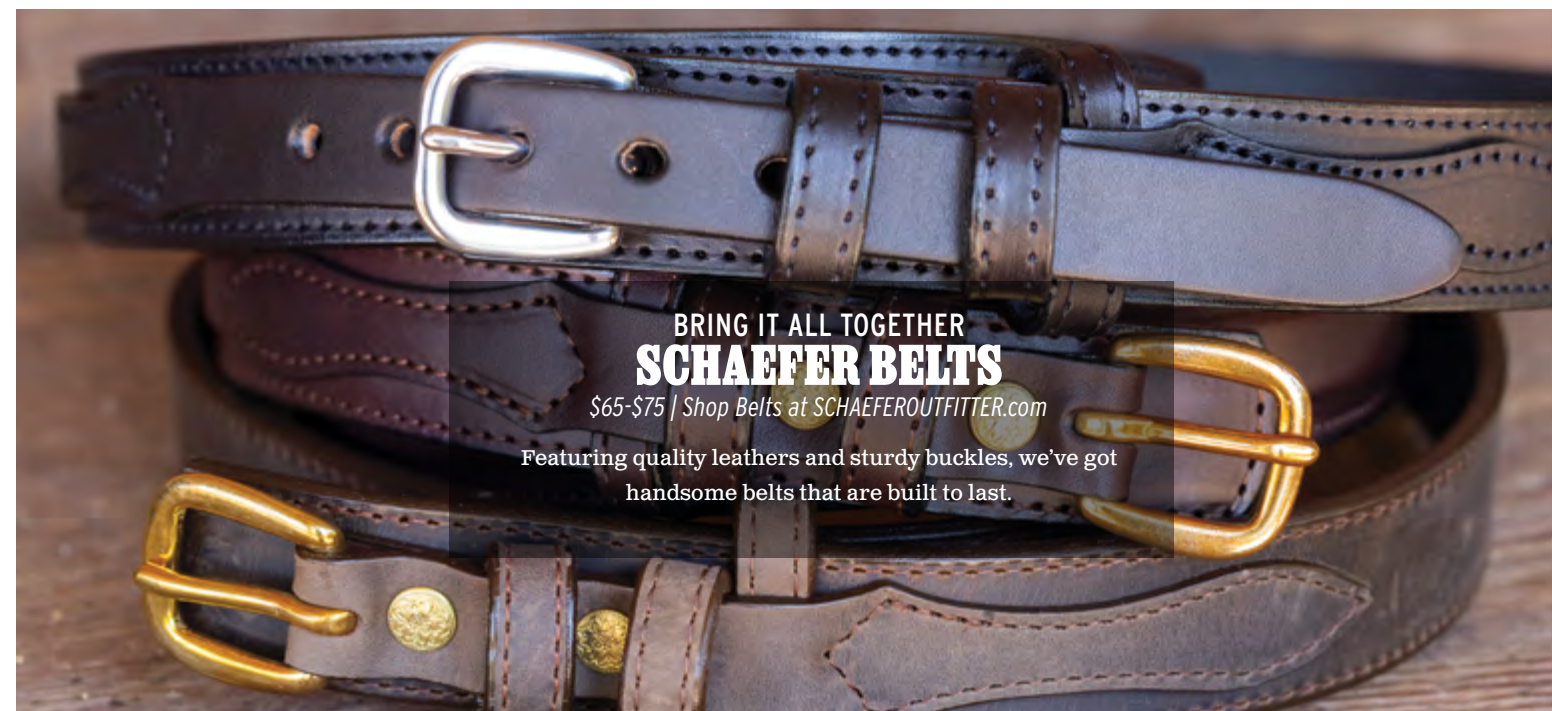
3. LONG SLEEVE LOGO TEE
\$35 | Sizes: M-XL
Colors: Navy, Brick

4. ON THE PLAINS POCKET TEE
\$30 | Sizes: M-XL



5. VINTAGE LOGO TEE
\$30 | Sizes: M-XL
Colors: Salt, Navy

6. FOR LAND FOR LIFE TEE
\$30 | Sizes: M-XL



BRING IT ALL TOGETHER
SCHAEFER BELTS

\$65-\$75 | Shop Belts at SCHAEFEROUTFITTER.com

Featuring quality leathers and sturdy buckles, we've got handsome belts that are built to last.



VALLEY WELLINGTON BOOT SOCK
\$10
Material: 80% Cotton, 18% Nylon, 2% Spandex



MESA WICK BOOT SOCK
\$12
Material: 80% Polyester, 18% Nylon, 2% Spandex



ALPINE HUNTER BOOT SOCK
\$14
Material: 40% Merino Wool, 60% Acrylic

TRUSTED SINCE 1982

WESTERN WEAR • COATS & JACKETS • VESTS • WORK WEAR • DUNGAREES • & MORE



Contact Us:

support@schaeferoutfitter.com
1-800-426-2074 (M-F 8am-6pm CST)

Shop 24/7:

schaeferoutfitter.com

Follow Us:

IG: @schaeferoutfitter
FB: @schaeferoutfitter
#forlandforlife