

# CERTIFICATE OF ANALYSIS

## ISO/IEC 17025:2017 ACCREDITATION #103104



Order #: 97304  
**Order Name:** Social CBD  
 Lemon Berry Chill Gummies  
 10ct 125mg/ 60ct 750mg  
**Batch#:** 220171  
**Received:** 07/14/2022  
**Completed:** 07/20/2022

**Kadenwood Brands**  
<https://selectmylevel.com>  
[info@selectmylevel.com](mailto:info@selectmylevel.com)



### Sample



### Cannabinoid Summary

<b>N/D</b> D9-THC	<b>0.337%</b> Total CBD
<b>31.8 mg</b> Cannabinoids per serving (2 gummies)	<b>31.8 mg</b> CBD per serving (2 gummies)

### Batch Info

**ID:**  
**Date:**  
**Best By Date:**  
**Size:**  
**Total Qty Produced:**

### Report Download Info

**URL:** <https://www.verifycbd.com/report/8465z17c18>

1 serving (2 gummies) = 9.44  
 grams per serving (2 gummies) x  
 Cannabinoid concentration

### Testing Summary

<b>Tested</b> Cannabinoids	<b>Pass</b> Pesticide	<b>Tested</b> Terpenes
<b>Tested</b> Microbial	<b>Pass</b> Residual Solvents	<b>Pass</b> Mycotoxin
<b>Pass</b> Heavy Metals	<b>Tested</b> Water Activity	<b>Pass</b> Filth and Foreign

D9-THC
THCA
CBD 0.337%
CBDA
CBDV
CBC
CBN
CBG
CBGA
D8-THC
THCV

### Instruments

GCMS-MS - Shimadzu GCMS-TQ8040  
 LCMS-MS - Shimadzu LCMS-8060  
 Headspace GCMS - Shimadzu GCMS  
 QP2020 with HS20  
 SHIMADZU INTEGRATED UPLC-PDA  
 ICP-MS - Shimadzu ICPMS-2030  
 LC-MS - Shimadzu LCMS-8060  
 PCR - Agilent AriaMX  
 HD-3A Water Activity Meter  
 Amscope Simul-Focal Trinocular Stereo  
 Zoom Microscope

### SOPS

Cannabinoids Test - GSL SOP 400  
 Terpenes Test - GSL SOP 404  
 Pesticide Analysis - GSL SOP 401  
 Residual Solvents - GSL SOP 405  
 Heavy Metals Analysis- GSL SOP 403  
 Mycotoxin Analysis - GSL SOP 401  
 Microbial Analysis - GSL SOP 406  
 Water Activity - GSL SOP 407  
 Filth and Foreign Materials Analysis -  
 GSL SOP 409

Diana Asensio, M.S.,  
 Lab Director

**Green Scientific Labs**  
[info@greenscientificlabs.com](mailto:info@greenscientificlabs.com)  
 1-833 TEST-CBD



This COA is governed by the terms and conditions listed on: <https://www.greenscientificlabs.com/terms-of-use.php>

# CERTIFICATE OF ANALYSIS

## ISO/IEC 17025:2017 ACCREDITATION #103104



Order #: 97304  
 Order Name: Social CBD  
 Lemon Berry Chill Gummies  
 10ct 125mg/ 60ct 750mg  
 Batch#: 220171  
 Received: 07/14/2022  
 Completed: 07/20/2022

Kadenwood Brands  
<https://selectmylevel.com>  
[info@selectmylevel.com](mailto:info@selectmylevel.com)



### Sample



<p><b>N/D</b> Total D9-THC</p>	<p><b>0.337%</b> Total CBD</p>
<p><b>31.8 mg</b> Cannabinoids per serving (2 gummies)</p>	<p><b>31.8 mg</b> CBD per serving (2 gummies)</p>

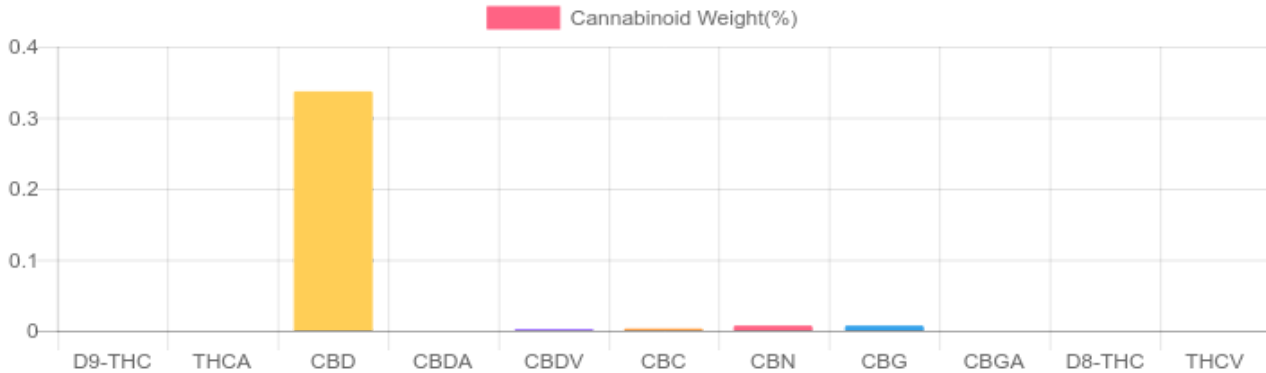
### Cannabinoids Test

HPLC-DAD  
 GSL SOP 400

UPLOADED: 07/20/2022 11:16:43

Cannabinoids	LOQ(mg/g)	LOD(mg/g)	weight(%)	mg/g	mg/serving (2 gummies)
D9-THC	0.1954	0.0645	N/D	N/D	N/D
THCA	0.1954	0.0645	N/D	N/D	N/D
CBD	0.1954	0.0645	0.337%	3.367	31.784
CBDA	0.1954	0.0645	N/D	N/D	N/D
CBDV	0.1954	0.0645	N/D	N/D	N/D
CBC	0.1954	0.0645	N/D	N/D	N/D
CBN	0.1954	0.0645	B/LOQ	B/LOQ	B/LOQ
CBG	0.1954	0.0645	B/LOQ	B/LOQ	B/LOQ
CBGA	0.1954	0.0645	N/D	N/D	N/D
D8-THC	0.1954	0.0645	N/D	N/D	N/D
THCV	0.1954	0.0645	N/D	N/D	N/D
TOTAL D9-THC			N/D	N/D	N/D
TOTAL CBD*			0.337%	3.367	31.8
TOTAL CANNABINOIDS			0.337%	3.367	31.8

1 serving (2 gummies) = 9.44 grams per serving (2 gummies) x Cannabinoid concentration



\*Total CBD = CBD + CBDA x 0.877  
 N/D - Not Detected, B/LOQ - Below Limit of Quantification

Diana Asensio, M.S.,  
 Lab Director

**Green Scientific Labs**  
[info@greenscientificlabs.com](mailto:info@greenscientificlabs.com)  
 1-833 TEST CBD



# CERTIFICATE OF ANALYSIS

## ISO/IEC 17025:2017 ACCREDITATION #103104



Order #: 97304  
 Order Name: Social CBD  
 Lemon Berry Chill Gummies  
 10ct 125mg/ 60ct 750mg  
 Batch#: 220171  
 Received: 07/14/2022  
 Completed: 07/20/2022

Kadenwood Brands  
<https://selectmylevel.com>  
[info@selectmylevel.com](mailto:info@selectmylevel.com)



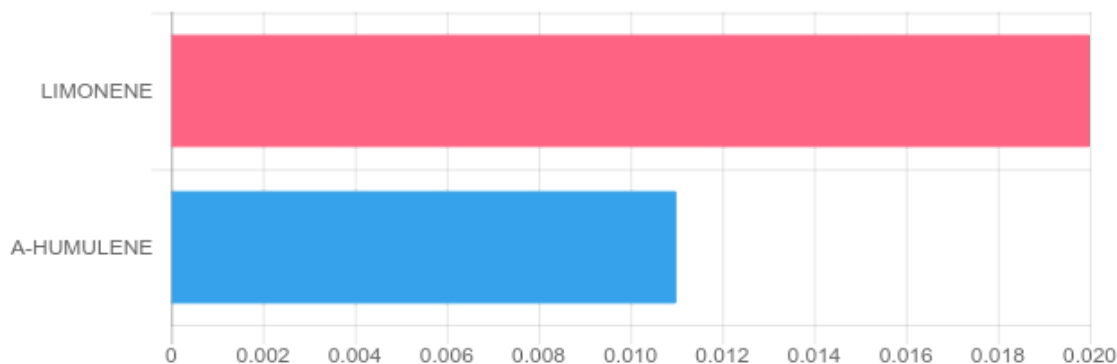
### TERPENES: TOTAL (0.031%)

GSL SOP 404  
 Uploaded: 07/20/2022 14:49:09

GC-FID

Terpene	Results (%)	LOQ (%)	LOD (%)	Terpene	Results (%)	LOQ (%)	LOD (%)
3-CARENE	N/D	0.003%	0.001%	GERANIOL	N/D	0.003%	0.001%
A-BISABOLOL	N/D	0.003%	0.001%	GERANYL ACETATE	N/D	0.003%	0.001%
A-CEDRENE	N/D	0.003%	0.001%	GUAJOL	N/D	0.003%	0.001%
A-HUMULENE	0.011%	0.003%	0.001%	HEXAHYDROTHYMOL	N/D	0.003%	0.001%
A-PINENE	N/D	0.003%	0.001%	ISOBORNEOL	N/D	0.003%	0.001%
A-TERPINENE	N/D	0.003%	0.001%	ISOPULEGOL	N/D	0.003%	0.001%
B-MYRCENE	N/D	0.003%	0.001%	LIMONENE	0.020%	0.003%	0.001%
B-PINENE	N/D	0.003%	0.001%	LINALOOL	N/D	0.003%	0.001%
BORNEOL (MIX OF ISOMERS)	N/D	0.003%	0.001%	NEROL	N/D	0.003%	0.001%
CAMPHENE	N/D	0.003%	0.001%	P-MENTHA-1, 5-DIENE	N/D	0.003%	0.001%
CAMPHOR (MIX OF ISOMERS)	N/D	0.003%	0.001%	PULEGONE (+)	N/D	0.003%	0.001%
CARYOPHYLLENE OXIDE	N/D	0.003%	0.001%	SABINENE HYDRATE	N/D	0.003%	0.001%
CEDROL	N/D	0.003%	0.001%	TERPINEOL (MIX OF ISOMERS)	N/D	0.003%	0.001%
CIS-NEROLIDOL	N/D	0.003%	0.001%	TERPINOLENE	N/D	0.003%	0.001%
CIS-OCIMENE	N/D	0.003%	0.001%	TRANS-CARYOPHYLLENE	N/D	0.003%	0.001%
ENDO-FENCHYL ALCOHOL	N/D	0.003%	0.001%	TRANS-NEROLIDOL	N/D	0.003%	0.001%
EUCALYPTOL	N/D	0.003%	0.001%	TRANS-OCIMENE	N/D	0.003%	0.001%
FENCHONE (MIX OF ISOMERS)	N/D	0.003%	0.001%	VALENCENE	N/D	0.003%	0.001%
GAMMA-TERPINENE	B/LOQ	0.003%	0.001%				

### Top Terpenes Results:



Diana Asensio, M.S.,  
 Lab Director

**Green Scientific Labs**  
[info@greenscientificlabs.com](mailto:info@greenscientificlabs.com)  
 1-833 TEST CBD



This COA is governed by the terms and conditions listed on: <https://www.greenscientificlabs.com/terms-of-use.php>

# CERTIFICATE OF ANALYSIS

## ISO/IEC 17025:2017 ACCREDITATION #103104



Order #: 97304  
 Order Name: Social CBD  
 Lemon Berry Chill Gummies  
 10ct 125mg/ 60ct 750mg  
 Batch#: 220171  
 Received: 07/14/2022  
 Completed: 07/20/2022

Kadenwood Brands  
<https://selectmylevel.com>  
[info@selectmylevel.com](mailto:info@selectmylevel.com)



### PESTICIDE ANALYSIS:

GSL SOP 401

UPLOADED: 07/19/2022 15:42:47

GC-MS/MS

Pesticide	Action Level (ppm)	Results (ppm)	LOQ (ppm)	LOD (ppm)
CAPTAN	0.700	N/D	0.100	0.010
CHLORDANE	0.100	N/D	0.100	0.010
CHLORFENAPYR	0.100	N/D	0.100	0.010
COUMAPHOS	0.100	N/D	0.100	0.010

Pesticide	Action Level (ppm)	Results (ppm)	LOQ (ppm)	LOD (ppm)
CYFLUTHRIN	2.000	N/D	0.100	0.010
CYPERMETHRIN	1.000	N/D	0.100	0.010
PARATHION-METHYL	0.100	N/D	0.100	0.010
PENTACHLORONITROBENZENE	0.100	N/D	0.100	0.010

LC-MS/MS

Pesticide	Action Level (ppm)	Results (ppm)	LOQ (ppm)	LOD (ppm)
ABAMECTIN B1A	0.100	N/D	0.035	0.002
ACEPHATE	0.100	N/D	0.040	0.002
ACEQUINOCYL	0.100	N/D	0.002	0.002
ACETAMIPRID	0.100	N/D	0.002	0.002
ALDICARB	0.100	N/D	0.010	0.002
AZOXYSTROBIN	0.100	N/D	0.040	0.002
BIFENAZATE	0.100	N/D	0.002	0.002
BIFENTHRIN	3.000	N/D	0.002	0.002
BOSCALID	0.100	N/D	0.050	0.010
CARBARYL	0.500	N/D	0.004	0.002
CARBOFURAN	0.100	N/D	0.010	0.002
CHLORANTRANILIPROLE	10.000	N/D	0.010	0.002
CHLORPYRIFOS	0.100	N/D	0.010	0.002
CLOFENTEZINE	0.100	N/D	0.002	0.002
DAMINOZIDE	0.100	N/D	0.040	0.010
DIAZINON	0.100	N/D	0.010	0.002
DICHLORVOS	0.100	N/D	0.040	0.002
DIMETHOATE	0.100	N/D	0.002	0.002
DIMETHOMORPH	2.000	N/D	0.002	0.001
ETHOPROPHOS	0.100	N/D	0.010	0.002
ETOFENPROX	0.100	N/D	0.002	0.002
ETOXAZOLE	0.100	N/D	0.002	0.002
FENHEXAMID	0.100	N/D	0.040	0.010
FENOXYCARB	0.100	N/D	0.004	0.002
FENPYROXIMATE	0.100	N/D	0.002	0.002
FIPRONIL	0.100	N/D	0.004	0.002
FLONICAMID	0.100	N/D	0.010	0.002
FLUDIOXONIL	0.100	N/D	0.004	0.002
HEXYTHIAZOX	0.100	N/D	0.004	0.002

Pesticide	Action Level (ppm)	Results (ppm)	LOQ (ppm)	LOD (ppm)
IMAZALIL	0.100	N/D	0.010	0.002
IMIDACLOPRID	5.000	N/D	0.002	0.002
KRESOXIM-METHYL	0.100	N/D	0.002	0.002
MALATHION	0.500	N/D	0.040	0.010
METALAXYL	2.000	N/D	0.004	0.002
METHIOCARB	0.100	N/D	0.010	0.002
METHOMYL	1.000	N/D	0.002	0.002
MEVINPHOS	0.100	N/D	0.036	0.009
MYCLOBUTANIL	0.100	N/D	0.040	0.002
NALED	0.100	N/D	0.010	0.002
OXAMYL	0.500	N/D	0.002	0.002
PACLOBUTRAZOL	0.100	N/D	0.004	0.002
PERMETHRINS	0.500	N/D	0.010	0.002
PHOSMET	0.100	N/D	0.002	0.002
PIPERONYL	3.000	N/D	0.002	0.002
BUTOXIDE	0.100	N/D	0.010	0.002
PRALLETHRIN	0.100	N/D	0.040	0.002
PROPICONAZOLE	0.100	N/D	0.010	0.002
PROPOXUR	0.100	N/D	0.010	0.002
PYRETHRINS	0.500	N/D	0.013	0.001
PYRIDABEN	0.100	N/D	0.002	0.002
SPINETORAM	0.100	N/D	0.003	0.001
SPINOSAD	0.100	N/D	0.001	0.001
SPIROMESIFEN	0.100	N/D	0.002	0.002
SPIROTETRAMAT	0.100	N/D	0.010	0.002
SPIROXAMINE	0.100	N/D	0.040	0.002
TEBUCONAZOLE	0.100	N/D	0.040	0.010
THIACLOPRID	0.100	N/D	0.002	0.002
THIAMETHOXAM	5.000	N/D	0.010	0.002
TRIFLOXYSTROBIN	0.100	N/D	0.002	0.002

N/D = Not Detected, A/LOQ = Above LOQ Level, B/LOQ = Below LOQ Level, B/LOD = Below LOD Level

Diana Asensio, M.S.,  
 Lab Director

Green Scientific Labs  
[info@greenscientificlabs.com](mailto:info@greenscientificlabs.com)  
 1-833 TEST CBD



This COA is governed by the terms and conditions listed on: <https://www.greenscientificlabs.com/terms-of-use.php>

# CERTIFICATE OF ANALYSIS

## ISO/IEC 17025:2017 ACCREDITATION #103104



**Order #:** 97304  
**Order Name:** Social CBD  
 Lemon Berry Chill Gummies  
 10ct 125mg/ 60ct 750mg  
**Batch#:** 220171  
**Received:** 07/14/2022  
**Completed:** 07/20/2022

**Kadenwood Brands**  
<https://selectmylevel.com>  
[info@selectmylevel.com](mailto:info@selectmylevel.com)



### RESIDUAL SOLVENTS:

HS-GC-MS

GSL SOP 405

Uploaded: 07/19/2022 14:37:19

Residual Solvent	Action Level (ppm)	Results (ppm)	LOQ (ppm)	LOD (ppm)
1,1-DICHLOROETHENE	8	N/D	0.63	0.6
1,2- DICHLOROETHANE	2	N/D	0.12	0.04
1,2-DICHLOROETHENE	5	N/D	0.73	0.09
ACETONE	5,000	N/D	140	75
ACETONITRILE	410	N/D	25	6
BENZENE	1	N/D	1	0.6
BUTANE	5,000	N/D	50	48
CHLOROFORM	1	N/D	1	0.5
ETHANOL	5,000	N/D	140	47
ETHYL ACETATE	5,000	N/D	140	40
ETHYL ETHER	5,000	N/D	140	50
ETHYLENE OXIDE	1	N/D	2	0.6
ISOPROPYL ALCOHOL	5,000	N/D	140	50
METHANOL	3,000	N/D	100	25
METHYLENE CHLORIDE	125	N/D	1.5	1.5
N-HEPTANE	5,000	N/D	140	6
N-HEXANE	290	N/D	18	6
PENTANE	5,000	N/D	140	75
PROPANE	5,000	N/D	30	30
TOLUENE	890	N/D	53	15
TRICHLOROETHENE	1	N/D	1	0.3
XYLENES	150	N/D	130	15

Diana Asensio, M.S.,  
Lab Director

**Green Scientific Labs**  
[info@greenscientificlabs.com](mailto:info@greenscientificlabs.com)  
 1-833 TEST CBD



This COA is governed by the terms and conditions listed on: <https://www.greenscientificlabs.com/terms-of-use.php>

# CERTIFICATE OF ANALYSIS

## ISO/IEC 17025:2017 ACCREDITATION #103104



Order #: 97304  
 Order Name: Social CBD  
 Lemon Berry Chill Gummies  
 10ct 125mg/ 60ct 750mg  
 Batch#: 220171  
 Received: 07/14/2022  
 Completed: 07/20/2022

Kadenwood Brands  
<https://selectmylevel.com>  
[info@selectmylevel.com](mailto:info@selectmylevel.com)



### Microbial Analysis:

Microbial Analysis GSL SOP 406

Uploaded: 07/20/2022 17:36:23

### MICROBIAL ANALYSIS:

Test	SOP	Test Method	Device Used	Allowable Criteria	Actual Result
TOTAL YEAST AND MOLD	406	REAL-TIME PCR	ARIAMX PCR	NOT APPLICABLE	< 1,000 CFU/G
AEROBIC BACTERIA COUNT	406	REAL-TIME PCR	ARIAMX PCR	NOT APPLICABLE	< 10,000 CFU/G
ENTEROBACTERIACEAE	406	REAL-TIME PCR	ARIAMX PCR	NOT APPLICABLE	< 100 CFU/G
COLIFORM	406	REAL-TIME PCR	ARIAMX PCR	NOT APPLICABLE	< 100 CFU/G
ASPERGILLUS FUMIGATUS***	406	REAL-TIME PCR	ARIAMX PCR	< 1 CFU/G	NOT DETECTED
ASPERGILLUS NIGER***	406	REAL-TIME PCR	ARIAMX PCR	< 1 CFU/G	NOT DETECTED
ASPERGILLUS FLAVUS***	406	REAL-TIME PCR	ARIAMX PCR	< 1 CFU/G	NOT DETECTED
ASPERGILLUS TERREUS***	406	REAL-TIME PCR	ARIAMX PCR	< 1 CFU/G	NOT DETECTED
STEC E. COLI*	406	REAL-TIME PCR	ARIAMX PCR	< 1 CFU/G	NOT DETECTED
SALMONELLA*	406	REAL-TIME PCR	ARIAMX PCR	< 1 CFU/G	NOT DETECTED

\* STEC and Salmonella run as Multiplex

\*\* CFU/g Calculation based on MIP/Extract matrix

\*\*\* Flavus = 2 Copies of DNA / Fumigatis = 2 Copies of DNA Niger = 20 Copies of DNA / Terrus = 10 copies of DNA

Diana Asensio, M.S.,  
 Lab Director

**Green Scientific Labs**  
[info@greenscientificlabs.com](mailto:info@greenscientificlabs.com)  
 1-833 TEST CBD



This COA is governed by the terms and conditions listed on: <https://www.greenscientificlabs.com/terms-of-use.php>

# CERTIFICATE OF ANALYSIS

## ISO/IEC 17025:2017 ACCREDITATION #103104



Order #: 97304  
Order Name: Social CBD  
Lemon Berry Chill Gummies  
10ct 125mg/ 60ct 750mg  
Batch#: 220171  
Received: 07/14/2022  
Completed: 07/20/2022

Kadenwood Brands  
<https://selectmylevel.com>  
[info@selectmylevel.com](mailto:info@selectmylevel.com)



### Mycotoxin Analysis:

LC-MS/MS  
GSL SOP 401

Uploaded: 07/19/2022 15:42:46

Analyte	LOQ (ppb)	LOD (ppb)	Action Lvl (ppb)	Results (ppb)
AFLATOXIN B1	1	1	20	N/D
AFLATOXIN B2	1	1	20	N/D
AFLATOXIN G1	1	1	20	N/D
AFLATOXIN G2	1	1	20	N/D
OCHRATOXIN A	1	1	20	N/D

### Heavy Metals Analysis:

ICP-MS  
GSL SOP 403

Uploaded: 07/19/2022 16:01:16

Metal	LOQ (ppb)	LOD (ppb)	Action Level (ppb)	Result (ppb)
ARSENIC (AS)	75	20	200	N/D
CADMIUM (CD)	75	20	200	N/D
MERCURY (HG)	75	20	100	N/D
LEAD (PB)	75	20	500	N/D

### Moisture Analysis:

Shimadzu MOC63U Moisture Balance - GSL SOP 411

Uploaded: 07/19/2022 11:48:26

#### Moisture %

4.8%

### Water Activity:

Water Activity Meter

Uploaded: 07/19/2022 11:48:27

#### Water

0.66

### Filth and Foreign Materials Analysis:

Microscope - Amscope Simul-Focal Trinocular Stereo Zoom Microscope - GSL SOP 409

Uploaded: 07/19/2022 11:38:12

Pass: No Foreign Materials Detected

Diana Asensio, M.S.,  
Lab Director

Green Scientific Labs  
[info@greenscientificlabs.com](mailto:info@greenscientificlabs.com)  
1-833 TEST CBD

