



**Certificate of Analysis**  
Compliance Test

Client Information:

**Extract Labs**

1399 Horizon Ave.  
Lafayette, CO 80026

Batch # 23T1062403  
Batch Date: 2023-03-23  
Extracted From: Hemp

Test Reg State: Colorado

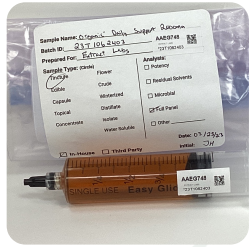
Production Facility: Extract Labs  
Production Date: 2023-03-23

Order # EXT230324-030001  
Order Date: 2023-03-24  
Sample # AAEG748

Sampling Date: 2023-04-02  
Lab Batch Date: 2023-04-02  
Completion Date: 2023-04-10

Initial Gross Weight: 102.393 g  
Net Weight: 61.893 g  
Density: 1.004666667 g/ml

Number of Units: 2  
Net Weight per Unit: 30946.500 mg  
Sampling Method: MSP 7.3.1



Product Image

**Potency Tested** **Heavy Metals Passed** **Mycotoxins Passed** **Pesticides Passed** **Residual Solvents Passed**  
**Pathogenic Passed** **Microbiology Petrifilm Passed**

**Potency 10**  
Specimen Weight: 94.070 mg

**Tested**  
SOP13.001 (LCUV)

Analyte	LOD (%)	LOQ (%)	Result (mg/ml)	(%)
CBD	5.40E-5	0.0015	71.050	7.105
CBC	1.80E-5	0.0015	2.070	0.207
Delta-9 THC	1.30E-5	0.0015	2.010	0.201
CBG	2.48E-4	0.0015	1.450	0.145
CBDa	1.00E-5	0.0015	0.650	0.065
CBN	1.40E-5	0.0015	0.390	0.039
CBDV	6.50E-5	0.0015	<LOQ	<LOQ
CBGA	8.00E-5	0.0015	<LOQ	<LOQ
THCA-A	3.20E-5	0.0015	<LOQ	<LOQ
THCV	7.00E-6	0.0015	<LOQ	<LOQ
Total Active CBD			71.616	7.162
Total Active THC			2.012	0.201

**Potency Summary**

<b>Total Active THC</b> 0.201% 62.260mg	<b>Total Active CBD</b> 7.162% 2,216.260
<b>Total CBG</b> 0.145% 44.870mg	<b>Total CBN</b> 0.039% 12.070mg
<b>Other Cannabinoids</b> 0.207% 64.060mg	<b>Total Cannabinoids</b> 7.753% 2,399.280

**Residual Solvents - CO**  
Specimen Weight: 315.800 mg

Dilution Factor: 50.000

Analyte	LOD (ppm)	LOQ (ppm)	Action Limit (ppm)	Result (ppm)
Acetone	0.015	2.08	1000	<LOQ
Benzene	0.0002	0.02	2	<LOQ
Butanes	0.4167	2.5	1000	<LOQ
Ethanol	0.0021	2.78	1000	<LOQ
Ethyl Acetate	0.0012	1.11	1000	<LOQ
Heptane	0.0013	1.39	1000	<LOQ
Hexane	0.068	1.17	60	<LOQ

**Passed**  
SOP13.039 (GCMS)

**Microbiology (Petrifilm/Plating) - CO**  
Specimen Weight: 1004.600 mg

Dilution Factor: 1.000

Analyte	LOQ (cfu/g)	Action Limit (cfu/g)	Result (cfu/g)
Aerobic Bacteria	10	10000	<10
Total Coliform	10	100	<10

*Aixia Sun*  
Aixia Sun Lab Director/Principal Scientist  
D.H.Sc., M.Sc., B.Sc., MT (AAB)

Definitions and Abbreviations used in this report: Total Active CBD = CBD + (CBD-A \* 0.877), \*Total CBDV = CBDV + (CBDVA \* 0.87), Total Active THC = THCA-A \* 0.877 + Delta 9 THC, Total THC = THCV + (THCVA \* 0.87), CBG Total = (CBGA \* 0.877) + CBG, CBN Total = (CBNA \* 0.877) + CBN, Total CBC = CBC + (CBCA \* 0.877), Total THC-O-Acetate = Delta 8 THC-O-Acetate + Delta 9 THC-O-Acetate, Total THCP = Delta8-THCP + Delta9-THCP, Other Cannabinoids Total = Total Cannabinoids - All the listed cannabinoids on the summary section, Total Detected Cannabinoids = Delta6a10a-THC + Delta8-THC + Total CBN + CBT + CBE + Delta8-THCV + Total CBG + Total CBD + Total THCV + CBL + Total THC + Total CBC + Total CBDV + Delta10-THC + Total THC-O-Acetate + Total THCP. (mg/ml) = Milligrams per Milliliter, LOQ = Limit of Quantitation, LOD = Limit of Detection, Dilution = Dilution Factor (ppb) = Parts per Billion, (%) = Percent, (cfu/g) = Colony Forming Unit per Gram (cfu/g) = Colony Forming Unit per Gram, , LOD = Limit of Detection, (µg/g) = Microgram per Gram (ppm) = Parts per Million, (ppm) = (µg/g), (aw) = Water Activity, (mg/Kg) = Milligram per Kilogram, Passed - Analyte/microbe is non-detected or at the level below the action limit, Failed - Analyte/microbe is at the level that equal or above the action limit, \*Measurement of Uncertainty = +/- 10%  
This report shall not be reproduced, without written approval, from ACS Laboratory. The results of this report relate only to the material or product analyzed. Test results are confidential unless explicitly waived otherwise. ACS Laboratory is accredited to the ISO/IEC 17025:2017 Standard.





**Certificate of Analysis**  
Compliance Test

Client Information:

**Extract Labs**

1399 Horizon Ave.  
Lafayette, CO 80026

Batch # 23T1062403  
Batch Date: 2023-03-23  
Extracted From: Hemp

Test Reg State: Colorado

Production Facility: Extract Labs  
Production Date: 2023-03-23

Order # EXT230324-030001  
Order Date: 2023-03-24  
Sample # AAE748

Sampling Date: 2023-04-02  
Lab Batch Date: 2023-04-02  
Completion Date: 2023-04-10

Initial Gross Weight: 102.393 g  
Net Weight: 61.893 g  
Density: 1.004666667 g/ml

Number of Units: 2  
Net Weight per Unit: 30946.500 mg  
Sampling Method: MSP 7.3.1

**Pesticides - CO**  
Specimen Weight: 550.300 mg

**Passed**  
SOP 14.003 (LCMS/GCMS)

Dilution Factor: 2.730

Analyte	LOD (ppb)	LOQ (ppb)	Action Limit (ppb)	Result (ppb)	Analyte	LOD (ppb)	LOQ (ppb)	Action Limit (ppb)	Result (ppb)	Analyte	LOD (ppb)	LOQ (ppb)	Action Limit (ppb)	Result (ppb)
Abamectin	3.1800E-4	250	250	<LOQ	Dodemorph	6.4700E-12	50	*	<LOQ	Naled	5.8500E-6	100	*	<LOQ
Acephate	3.9632E-2	50	50	<LOQ	Endosulfan sulfate	8.8376E-1	2500	2500	<LOQ	Novaluron	2.0500E-4	25	25	<LOQ
Acequinocyl	5.7646E-2	30	*	<LOQ	Endosulfan-alpha	1.2220E+1	2500	2500	<LOQ	Oxamyl	1.6190E-3	1500	1500	<LOQ
Acetamiprid	3.3800E-10	50	50	<LOQ	Endosulfan-beta	2.2760E+1	2500	2500	<LOQ	Paclobotrazol	6.9300E-8	10	10	<LOQ
Aldicarb	2.2744E-2	500	500	<LOQ	Ethoprophos	1.5900E-5	10	10	<LOQ	Pentachloronitrobenzen(Quintozene)	4.3900E+0	20	*	<LOQ
Allethrin	4.7244E-1	100	100	<LOQ	Etofenprox	8.3050E-3	50	*	<LOQ	Pemmethrin	2.2089E-2	500	*	<LOQ
Atrazine	3.7992E-1	25	*	<LOQ	Etoxazole	8.3558E-1	20	*	<LOQ	Phenothrin	2.1200E-7	50	*	<LOQ
Azadirachtin	3.0710E-3	500	500	<LOQ	Etridiazole	4.0200E+0	150	150	<LOQ	Phosmet	9.6150E-3	20	*	<LOQ
Azoxystrobin	1.3247E-2	10	10	<LOQ	Fenhexamid	1.0947E+0	125	*	<LOQ	Piperonylbutoxide	1.3400E-7	1250	1250	<LOQ
Benzovindiflupyr	1.2567E-2	10	10	<LOQ	Fenoxycarb	3.4507E-1	10	10	<LOQ	Pinimicarb	5.6600E-5	10	10	<LOQ
Bifenazate	2.1700E-8	10	10	<LOQ	Fenpyroximate	4.4800E-7	20	*	<LOQ	Prallethrin	1.6732E-1	50	*	<LOQ
Bifenthrin	8.4200E-4	1000	*	<LOQ	Fensulfothion	7.9400E-4	10	10	<LOQ	Propiconazole	2.1300E-14	10	*	<LOQ
Boscalid	4.3300E-6	10	10	<LOQ	Fenthion	4.9113E+0	10	10	<LOQ	Propoxur	3.5081E-1	10	10	<LOQ
Buprofezin	1.6600E-9	20	*	<LOQ	Fenvalerate	5.9775E-1	100	*	<LOQ	Pyraclostrobin	5.3100E-7	10	10	<LOQ
Carbaryl	1.3800E-5	25	25	<LOQ	Fipronil	2.8847E-2	10	10	<LOQ	Pyrethrins	6.2350E-3	50	*	<LOQ
Carbofuran	7.7600E-5	10	10	<LOQ	Flonicamid	6.9733E-2	25	25	<LOQ	Pyridaben	8.7500E-15	20	20	<LOQ
Chlorantraniliprole	1.3559E-1	20	*	<LOQ	Fludioxonil	1.3402E-2	10	10	<LOQ	Pyriproxyfen	9.5800E-5	10	*	<LOQ
Chlorfenapyr	1.5370E+1	1500	1500	<LOQ	Fluopyram	1.1200E-9	10	10	<LOQ	Resmethrin	6.8013E-2	50	50	<LOQ
Chlorpyrifos	9.0900E-5	500	500	<LOQ	Hexythiazox	6.1900E-5	10	*	<LOQ	Spinetoram	2.3645E-2	10	10	<LOQ
Clofentezine	3.7100E-7	10	10	<LOQ	Imazail	2.9500E-4	10	10	<LOQ	Spinosad	5.9903E-1	10	10	<LOQ
Clothianidin	3.9900E-4	25	25	<LOQ	Imidacloprid	1.5300E-4	10	10	<LOQ	Spirodiclofen	3.7377E+6	250	*	<LOQ
Coumaphos	9.8600E-5	10	10	<LOQ	Iprodione	1.0554E-1	500	500	<LOQ	Spiromesifen	3.2183E-1	3000	*	<LOQ
Cyantraniliprole	6.0040E-3	10	10	<LOQ	Kinoprene	3.4000E+0	500	1250	<LOQ	Spirotetramat	4.2760E-2	10	10	<LOQ
Cyfluthrin	2.8130E+1	200	*	<LOQ	Kresoxim Methyl	1.4500E-4	150	150	<LOQ	Spiroxamine	1.2172E+0	100	*	<LOQ
Cypermethrin	1.1900E-6	300	*	<LOQ	Lambda Cyhalothrin	1.1686E-1	250	*	<LOQ	Tebuconazole	1.4800E-14	10	10	<LOQ
Cyprodinil	1.1410E-3	10	10	<LOQ	Malathion	1.3300E-4	10	10	<LOQ	Tebufenozide	1.8121E-2	10	10	<LOQ
Daminozide	3.0408E-1	100	*	<LOQ	Metalaxyl	4.8600E-5	10	10	<LOQ	Teflubenzuron	1.6620E-2	25	25	<LOQ
Deltamethrin	4.9284E-1	500	*	<LOQ	Methiocarb	2.2810E-3	10	10	<LOQ	Tetrachlorvinphos	8.3913E-1	10	10	<LOQ
Diazinon	3.9100E-10	20	*	<LOQ	Methomyl	1.1500E-6	25	25	<LOQ	Tetramethrin	9.9200E-5	100	*	<LOQ
Dichlorvos	1.1406E+0	50	50	<LOQ	Methoprene	1.1485E+0	2000	*	<LOQ	Thiabendazole	1.2510E-3	20	*	<LOQ
Dimethoate	2.8400E-6	10	10	<LOQ	methyl-Parathion	4.2400E+0	50	*	<LOQ	Thiacloprid	1.1200E-5	10	10	<LOQ
Dimethomorph	1.5700E-4	50	*	<LOQ	Mevinphos	4.4200E-5	25	25	<LOQ	Thiamethoxam	2.2500E-6	10	10	<LOQ
Dinotefuran	2.3697E-1	50	50	<LOQ	MGK-264	2.5880E-3	50	*	<LOQ	Thiophanate-methyl	2.2300E-4	50	*	<LOQ
Diuron	6.8620E-3	125	*	<LOQ	Myclobutanil	7.0006E-1	10	10	<LOQ	Trifloxystrobin	2.1700E-13	10	10	<LOQ

*Aixia Sun*  
Aixia Sun Lab Director/Principal Scientist  
D.H.Sc., M.Sc., B.Sc., MT (AAB)



Definitions and Abbreviations used in this report: Total Active CBD = CBD + (CBD-A \* 0.877), \*Total CBDV = CBDV + (CBDVA \* 0.87), Total Active THC = THCA-A \* 0.877 + Delta 9 THC, Total THC = THCV + (THCVA \* 0.87), CBG Total = (CBGA \* 0.877) + CBG, CBN Total = (CBNA \* 0.877) + CBN, Total CBC = CBC + (CBCA \* 0.877), Total THC-O-Acetate = Delta 8 THC-O-Acetate + Delta 9 THC-O-Acetate, Total THCP = Delta8-THCP + Delta9-THCP, Other Cannabinoids Total = Total Cannabinoids - All the listed cannabinoids on the summary section, Total Detected Cannabinoids = Delta6a10a-THC + Delta8-THC + Total CBN + CBT + CBE + Delta8-THCV + Total CBG + Total CBD + Total THCV + CBL + Total THC + Total CBC + Total CBDV + Delta10-THC + Total THC-O-Acetate + Total THCP. (mg/ml) = Milligrams per Milliliter, LOQ = Limit of Quantitation, LOD = Limit of Detection, Dilution = Dilution Factor (ppb) = Parts per Billion, (%) = Percent, (cfu/g) = Colony Forming Unit per Gram (cfu/g) = Colony Forming Unit per Gram, , LOD = Limit of Detection, (µg/g) = Microgram per Gram (ppm) = Parts per Million, (ppm) = (µg/g), (aw) = Water Activity, (mg/Kg) = Milligram per Kilogram, Passed - Analyte/microbe is non-detected or at the level below the action limit, Failed - Analyte/microbe is at the level that equal or above the action limit, \*Measurement of Uncertainty = +/- 10%  
This report shall not be reproduced, without written approval, from ACS Laboratory. The results of this report relate only to the material or product analyzed. Test results are confidential unless explicitly waived otherwise. ACS Laboratory is accredited to the ISO/IEC 17025:2017 Standard.



**Certificate of Analysis**  
Compliance Test

Client Information:

**Extract Labs**

1399 Horizon Ave.  
Lafayette, CO 80026

Batch # 23T1062403  
Batch Date: 2023-03-23  
Extracted From: Hemp

Test Reg State: Colorado

Production Facility: Extract Labs  
Production Date: 2023-03-23

Order # EXT230324-030001  
Order Date: 2023-03-24  
Sample # AAE6748

Sampling Date: 2023-04-02  
Lab Batch Date: 2023-04-02  
Completion Date: 2023-04-10

Initial Gross Weight: 102.393 g  
Net Weight: 61.893 g  
Density: 1.004666667 g/ml

Number of Units: 2  
Net Weight per Unit: 30946.500 mg  
Sampling Method: MSP 7.3.1



**Heavy Metals - CO**

Specimen Weight: 247.910 mg

Dilution Factor: 201.686

Analyte	LOD (ppb)	LOQ (ppb)	Action Limit (ppb)	Result (ppb)	Analyte	LOD (ppb)	LOQ (ppb)	Action Limit (ppb)	Result (ppb)
Arsenic (As)	4.83	100	1500	<LOQ	Lead (Pb)	0.58	100	500	<LOQ
Cadmium (Cd)	0.64	100	500	<LOQ	Mercury (Hg)	11.76	100	1500	<LOQ

**Passed**

SOP13.048 (ICP-MS)

**Pathogenic SE (qPCR) - CO**

Specimen Weight: 25.300 g

Dilution Factor: 1.000

Analyte	Action Limit (cfu/g)	Result (cfu/g)	Analyte	Action Limit (cfu/g)	Result (cfu/g)
E.Coli	Absent in 25g	Passed	Salmonella	Absent in 25g	Passed

**Passed**

SOP13.029 (qPCR)



**Mycotoxins - CO**

Specimen Weight: 550.300 mg

Dilution Factor: 2.730

Analyte	LOD (ppb)	LOQ (ppb)	Action Limit (ppb)	Result (ppb)	Analyte	LOD (ppb)	LOQ (ppb)	Action Limit (ppb)	Result (ppb)
Aflatoxin B1	3.7250E-1	2.5	5	<LOQ	Ochratoxin A	1.8997E-1	3.5	5	<LOQ
Aflatoxin Total		2.5	20	<LOQ					

**Passed**

SOP 14.003 (LCMS)

Aixia Sun Lab Director/Principal Scientist  
D.H.Sc., M.Sc., B.Sc., MT (AAB)



Definitions and Abbreviations used in this report: Total Active CBD = CBD + (CBD-A \* 0.877), \*Total CBDV = CBDV + (CBDVA \* 0.87), Total Active THC = THCA-A \* 0.877 + Delta 9 THC, Total THC = THCV + (THCVA \* 0.87), CBG Total = (CBGA \* 0.877) + CBG, CBN Total = (CBNA \* 0.877) + CBN, Total CBC = CBC + (CBCA \* 0.877), Total THC-O-Acetate = Delta 8 THC-O-Acetate + Delta 9 THC-O-Acetate, Total THCP = Delta8-THCP + Delta9-THCP, Other Cannabinoids Total = Total Cannabinoids - All the listed cannabinoids on the summary section, Total Detected Cannabinoids = Delta8-THC + Delta9-THC + Total CBN + CBT + CBE + Delta8-THCV + Total CBG + Total CBD + Total THCV + CBL + Total THC + Total CBC + Total CBDV + Delta10-THC + Total THC-O-Acetate + Total THCP. (mg/ml) = Milligrams per Milliliter, LOQ = Limit of Quantitation, LOD = Limit of Detection, Dilution = Dilution Factor (ppb) = Parts per Billion, (%) = Percent, (cfu/g) = Colony Forming Unit per Gram (cfu/g) = Colony Forming Unit per Gram, , LOD = Limit of Detection, (µg/g) = Microgram per Gram (ppm) = Parts per Million, (ppm) = (µg/g), (aw) = Water Activity, (mg/Kg) = Milligram per Kilogram, Passed - Analyte/microbe is non-detected or at the level below the action limit, Failed - Analyte/microbe is at the level that equal or above the action limit, \*Measurement of Uncertainty = +/- 10%

This report shall not be reproduced, without written approval, from ACS Laboratory. The results of this report relate only to the material or product analyzed. Test results are confidential unless explicitly waived otherwise. ACS Laboratory is accredited to the ISO/IEC 17025:2017 Standard.