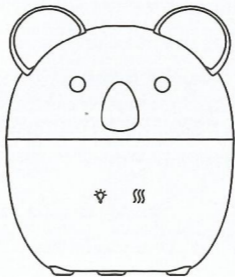
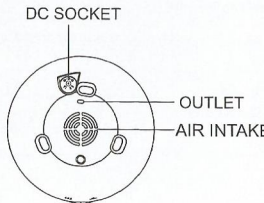
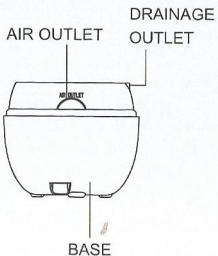
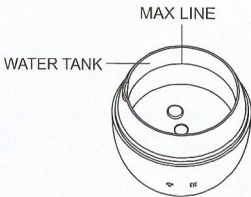
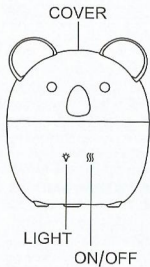


# Aroma Diffuser

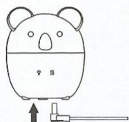
## User Manual



## PRODUCT DESCRIPTIONS



## OPERATION



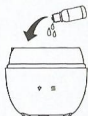
- ① Connect the DC port to the DC slot of the base.



- ② Take off the cover.



- ③ Add water into the tank, don't exceed the max 160ML.



- ④ Add some essential oils into the water(2-3 drops)



- ⑤ Re-install the cover.



- ⑥ Connect power with the provided USB cable.

- ⑦ There is a quick flash of warm white light when power connected with sound of "D".

☾ LIGHT:

First touch, turn on the warm white light, with sound of "D".  
 Second touch, lower the light brightness, with sound of "D".  
 Third touch, turn off the light, with sound of "DD".

Light can work alone; Long touch can turn off the light at any mode with sound of "DD".

- ☾ MIST:

First touch, the unit enters into continuous mist mode, with sound of "D".  
 Second touch, the unit enters into intermittent mist mode, with sound of "D".  
 (work 15s, stop 15s, recycle)

Third touch, turn off the unit (LIGHT and MIST), with sound of "DD".

Long touch can turn off the unit at any mode, with sound of "DD"

(There is no sound notice when the unit auto-shutdown when short of water.)



## WARM TIPS

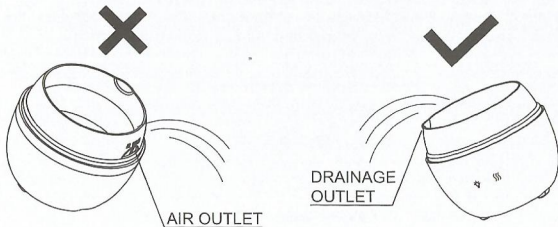
- Please use other container to add water. Don't fill in the tank from water-tap directly.
- Pure essential oils or oils which can be soluble into water are available for use. Please clean the unit as per the maintenance instructions before changing a new type of essential oil.
- It is quite normal that different humidity environment and temperature will affect the mist density.
- Do not let the mist spray to the furniture, clothes, wall directly.
- The essential oils may cause dye. Please use clean cloth wipe up if splashed out accidentally.
- To ensure the sanitation, please pour out the water completely and wipe up the unit with soft cloth after each use.
- If you don't use the unit for a long time, please pour out any remaining water completely in the tank and store it at dry place.
- When the power connects, the unit original state is OFF.
- If there is short of water in the tank, even though the power connects, the unit will shut automatically. Meanwhile, all functions will be off .

## MAINTENANCE

After using 5-6times or 3-5days, please clean the product as follows:

1. Turn off the power and disconnect the DC socket.
2. Pour out any remaining water completely in the tank. Do not pour out water from the air outlet side. (Fig. 1)
3. Put a small amount of detergent diluted in the water. Then use a clean cloth dip in the water and wipe up the unit gently. If there is any dirt in the inner side of tank, please clean it.
4. Never use medical diluent, alcohol during maintenance. Or it may cause product damage and erase various signs on the product.

Note: please use neutral detergents.



(Fig.1)

## PRECAUTIONS

Please read carefully the following safety precautions before using this unit. The safety precautions listed below are intended to prevent you and others from injury or to prevent damage to the product.

Warning: May cause serious personal injury.

- Please keep the unit unreachable for children and babies, winding around the power cord to the children's neck mistakenly may lead to suffocation death.
- Please use standard adaptor of this unit.
- Please don't dismantle, modify, heating the unit.
- Avoiding from falling down or heavily hitting.
- If the unit smoke, make a smell, or have any abnormal situation, please stop using it immediately.
- Do not touch any part of the unit with wet hands.
- Do not allow the metal objects (like pin, key) in contact with the terminals or plug.
- Do not cut, damage, modify the power cord or put the weight on the power cord. Otherwise it may cause an electric shock or fire.

Attentions: May cause product damaged.

- Do not allow liquids or foreign matter enter inside the unit. Otherwise it may cause irreparable damage to the unit.
- Please unplug the unit when not use.
- Do not cover anything on the unit when it is working.
- Please placed the unit in a safe place where others will not be tripped by the power cord or it may cause injury or damage to the unit.
- Avoid using the unit at the following locations:  
Direct sunlight, high temperature or wet, dusty place.
- Keep away from electronic equipment: such as TV, Audio equipment.
- Keep away from strong vibrating place.

## TROUBLESHOOTING

Please refer to the sheet below when the unit fails to work.

Fail to turn on the unit	<ul style="list-style-type: none"> <li>● Is there enough water in the tank? --Add water to the tank.</li> <li>● Does water amount exceed the MAX line? --Reduce the water amount and make sure it is below MAX line.</li> </ul>
Shut off suddenly during working	<ul style="list-style-type: none"> <li>● Does water amount exceed the MAX line? --Reduce the water amount and make sure it is below MAX line. Please check if the USB cable has been disconnected, try to unplug the DC socket and plug it back to turn on the unit.</li> </ul>
No mist or abnormal mist	<ul style="list-style-type: none"> <li>● Not enough water or too much water? --Add water to the tank but not fill over 160ML MAX line.</li> <li>● Dirt on the ultrasonic atomizer? --Please refer to maintenance instructions to clean the unit.</li> <li>● Too much dirt on the air intake? --Please use the brush to clean the air intake part.</li> </ul>
Water leakage from product	<ul style="list-style-type: none"> <li>● Low temperature or high humidity? --Under these conditions, the mist may condense quickly into water droplets. Please wipe them up.</li> </ul>

**SPECIFICATIONS**

Size:	119*119*141mm
Weight:	Approx 253g
Input:	DC 5V $\geq$ 1A
Cable length:	Approx 150cm
Electric consumption:	Approx 5W
Mist mode:	Continuous mist mode / Intermittent mist mode
Water capacity:	160ML
Material:	PP / ABS / Silica gel
Accessories:	USB cable,User manual
Ultrasonic vibration:	3M