



COCKTAIL
KINGDOM®

CATALOG

2024

TABLE OF CONTENTS

4	ABOUT US
5	SHAKERS
8	MIXING GLASSES
11	JIGGERS
14	BARSPoons & STIRRERS
18	STRAINERS
21	DASHERS & POURERS
24	KNIVES
26	GARNISH TOOLS & ACCESSORIES
30	ICE TOOLS & MOLDS
33	SETS & KITS
35	BAGS & CASES
37	DRINKWARE
44	COLLABORATIONS
58	LIBRARY
61	SHOP BY FINISH
69	GET IN TOUCH

ABOUT US



As the world's premier manufacturer and distributor of professional barware, our products combine historical designs, contemporary ergonomics, and commercial durability to create elegant barware solutions for the professional bartender.

Cocktail Kingdom began as a crucial resource during the early-aughts cocktail renaissance. Our founder, Greg Boehm, noted that bartenders lacked access to the proper tools to hone the rapidly evolving craft. Working alongside bar professionals, with a passion for history and obsessive attention to detail, we set out on an international hunt to fill this void.

That drive for excellence, precision, and quality continues today. We source products from across the globe, and our house designs (from Koriko®, Leopold®, and Yarai® to name a few) are brand standards in the cocktail industry worldwide.

Whether you are a seasoned bartending lifer or a passionate home bartender, you will find the absolute best tools for the job at Cocktail Kingdom.

SHAKERS

OUR INDUSTRY-LEADING QUALITY CONTROL GIVES YOU A
PERFECT BALANCE BETWEEN FLEXIBILITY AND RIGIDITY
THAT ENSURES A TIGHT SEAL WITH EASY SEPARATION.





KORIKO® WEIGHTED SHAKING TINS

The choice of beverage industry professionals. Our original house brand, Koriko® is synonymous with Cocktail Kingdom quality.

MATERIAL Stainless Steel **FEATURES** Weighted bottom

SIZE (18oz) H 5.1in (13 cm) x D 3.4in (8.7 cm)

SIZE (28oz) H 6.9in (17.5 cm) x D 3.5in (9 cm)

SET OF TWO KORIKO® SHAKING TINS (18 OZ & 28 OZ)

A.	Stainless Steel	KIT-SHA-KOR-ST
B.	Gold-Plated	KIT-SHA-KOR-G
C.	Copper-Plated	KIT-SHA-KOR-C
D.	Gunmetal Black	KIT-SHA-KOR-GB

SMALL KORIKO® WEIGHTED SHAKING TIN (18 OZ)

E.	Stainless Steel	SHA-KOR18ST
F.	Gold-Plated	SHA-KOR18G
G.	Copper-Plated	SHA-KOR18C
H.	Gunmetal Black	SHA-KOR18GB

LARGE KORIKO® WEIGHTED SHAKING TIN (28 OZ)

I.	Stainless Steel	SHA-KOR28ST
J.	Gold-Plated	SHA-KOR28G
K.	Copper-Plated	SHA-KOR28C
L.	Gunmetal Black	SHA-KOR28GB



LEOPOLD® WEIGHTED SHAKING TINS

Inspired by antique barware dating to the 1920s-30s, the Leopold® line carries a streamlined art deco style.

MATERIAL Stainless Steel **FEATURES** Weighted bottom with lip

SIZE (18oz) H 5 in (12.5 cm) x D 3.4 in (8.6 cm)

SIZE (28oz) H 6.9 in (17.5 cm) x D 3.5 in (9 cm)

SET OF TWO LEOPOLD® SHAKING TINS (18 OZ & 28 OZ)

M.	Stainless Steel	KIT-SHA-LEO-ST
N.	Gold-Plated	KIT-SHA-LEO-G
O.	Copper-Plated	KIT-SHA-LEO-C
P.	Gunmetal Black	KIT-SHA-LEO-GB

SMALL LEOPOLD® WEIGHTED SHAKING TIN (18 OZ)

Q.	Stainless Steel	SHA-LEO18ST
R.	Gold-Plated	SHA-LEO18G
S.	Copper-Plated	SHA-LEO18C
T.	Gunmetal Black	SHA-LEO18GB

LARGE LEOPOLD® WEIGHTED SHAKING TIN (28 OZ)

U.	Stainless Steel	SHA-LEO28ST
V.	Gold-Plated	SHA-LEO28G
W.	Copper-Plated	SHA-LEO28C
X.	Gunmetal Black	SHA-LEO28GB



USAGI™ HEAVYWEIGHT COBBLER SHAKER

When pomp and elegance are key, reach for a 3-piece Usagi Shaker. Includes a built-in strainer.

MATERIAL Stainless Steel

SIZE (500 ML) H 7.3 in (18.5 cm) x D 3.3 in (8.5 cm)

SIZE (800 ML) H 8.5 in (21.5 cm) x D 3.5 in (9 cm)

HEAVYWEIGHT USAGI™ COBBLER SHAKER (500 ML)

Y.	Stainless Steel, Mirror Finish	SHA-USG500ST-MIR
Z.	Stainless Steel, Matte Finish	SHA-USG500ST-MAT
AA.	Gold-Plated	SHA-USG500G
AB.	Copper-Plated	SHA-USG500C

USAGI™ COBBLER SHAKER (800 ML)

AC.	Stainless Steel, Mirror Finish	SHA-USG800ST-MIR
AD.	Stainless Steel, Matte Finish	SHA-USG800ST-MAT
AE.	Copper-Plated	SHA-USG800C



DAVID WONDRICH SHAKERS

Super-premium recreations of historical shakers.

MATERIAL Silver-Plated EPNS

SIZE (COLEY™) H 10.2 in (26 cm) x D 3.4 in (8.6 cm)

SIZE (VOLNEY™) H 9.4 in (24 cm) x D 3.7 in (9.5 cm)

VOLUME: 520 ML (18 OZ)

AF.	Coley™ Shaker	WON-SHA-COL520
-----	---------------	----------------

VOLUME: 715 ML (24 OZ)

AG.	Volney™ Shaker	WON-SHA-VOL715
-----	----------------	----------------



DE SOTO PETIT COCKTAIL SHAKER

MATERIAL Stainless Steel

SIZE H 6.1 in (15.6 cm) x D 3.1 in (8.1 cm)

VOLUME: 350 ML (11.8 OZ)

AH.	Petit Cocktail Shaker	SHA-SOT350ST
-----	-----------------------	--------------



MIXING GLASSES





500 ML MIXING GLASSES (17 OZ)

Entry-level, utilitarian, durable. 1 cocktail capacity.

MATERIAL Glass
SIZE H 5.3 in (13.5 cm) x D 3.6 in (9.2 cm)

AI. Yarai® Mixing Glass	MXG-YAR500
AJ. Sokata Mixing Glass	MXG-SOK500



550 ML MIXING GLASSES (19 OZ)

Hand-blown and etched, these are the industry standard. 1-2 cocktail capacity.

MATERIAL Glass
SIZE H 5.3 in (13.5 cm) x D 3.5 in (8.8 cm)

AK. Yarai® Mixing Glass Seamless	MXG-SYAR550
AL. Yarai® Mixing Glass, Seamless, Flat Base	MXG-SYAR550FB
AM. Paddle Mixing Glass, Seamless	MXG-SPAD550
AN. Paddle Mixing Glass, Seamless, Flat Base	MXG-SPAD550FB



675 ML MIXING GLASSES (23 OZ)

2-3 cocktail capacity

MATERIAL Glass
SIZE H 6.6 in (16.7 cm) x D 3.6 in (9 cm)

AO. Yarai® Mixing Glass, Seamless, Large	MXG-SYAR675
AP. Yarai® Mixing Glass, Seamless, Large, Flat Base	MXG-SYAR675FB
AQ. Paddle Mixing Glass, Large, Seamless	MXG-SPAD675
AR. Paddle Mixing Glass, Large, Seamless, Flat Base	MXG-SPAD675FB
AS. Sokata Mixing Glass, Large	MXG-SOK675



800 ML MIXING GLASSES (28 OZ)

3-4 cocktail capacity

MATERIAL Glass
SIZE H 6 in (15 cm) x D 4 in (10 cm)

AT. Yarai® Mixing Glass, Seamless, Extra-Large, Flat Base	MXG-SYAR800FB
AU. Paddle Mixing Glass, Extra-Large, Seamless, Flat Base	MXG-SPAD800FB



PURO BURRO MIXING GLASS

MATERIAL Recycled Glass
SIZE H 5.9 in (14.9 cm) x D 3.5 in (8.9 cm)

VOLUME: 630 ML (21 OZ)

AV. Mexican Mixing Glass	MXG-MEX-630
--------------------------	-------------





STEMMED MIXING GLASSES

BERRY WALL™ MATERIAL Crystal, Lead-Free **SIZE** H 7.8 in (19.7 cm) x D 3.7 in (9.3 cm)
EXTRA LARGE MATERIAL Glass **SIZE** H 7.4 in (18.8 cm) x D 4.1 in (10.5 cm)
GALLONE MATERIAL Glass **SIZE** H 9.4 in (24 cm) x D 5.7 in (14.5 cm)

VOLUME: 500 ML (17 OZ)

AW. Berry Wall™ Footed Mixing Glass **WON-MXG-500BW-CLR**

VOLUME: 750 ML (25 OZ)

AX. Extra Large Stemmed Mixing Glass **MXG-STEM750**

VOLUME: 1 L (33.8 OZ)

AY. Gallone Mixing Glass **MXG-GAL1000**



MIXTIN™ STIRRING TIN

Vacuum insulated, nearly indestructible

MATERIAL 18/8 Stainless Steel with Brushed Finish
FEATURES Double-Walled and Vacuum Insulated
SIZE H 6 in (15.2 cm) x D 4 in (10.1 cm)

VOLUME: 625 ML (21 OZ)

AZ. Mixtin™ Stirring Tin, Banded **MXG-MXTN625BND**

BA. Mixtin™ Stirring Tin, Banded, Gold Finish **MXG-MXTN625BND-G**

BB. Mixtin™ Stirring Tin, Banded, Gunmetal Finish **MXG-MXTN625BND-GB**

BC. Mixtin™ Stirring Tin, Pandan **MXG-MXTN625PAN**

BD. Mixtin™ Stirring Tin, Sakura **MXG-MXTN625SAK**



PROTECTIVE CASE

MATERIAL Neoprene
SIZE H 5.3 in (13.5 cm) x D 3.5 in (9 cm)

BE. Protective Sleeve for Mixing Glass, Black **OTH-MXG-SLV01**

JIGGERS

ACCURACY AND PRECISION ARE KEY WHEN CRAFTING BALANCED COCKTAILS, AND OUR JIGGERS ARE DESIGNED TO MEET THE HIGHEST QUALITY CONTROL STANDARDS IN THE INDUSTRY.



JAPANESE STYLE JIGGERS

The measurement tool of choice in the modern bar.



MATERIAL: 18/8 Stainless Steel

SIZE (½ oz / ¾ oz) : H 3 in (7.5 cm) x 1.7 in (4.4 cm)

SIZE (½ oz / 1 oz) : H 4.4 in (11.3 cm) x D 1.7 in (4.4 cm)

SIZE (1 oz / 2 oz) : H 4.9 in (12.4 cm) x D 1.8 in (4.6 cm)

VOLUME: 1 OZ OVER 2 OZ | MARKINGS: ½ OZ, ¾ OZ, 1 ½ OZ

BF. Stainless Steel	JIG-JAP0102ST
BG. Gold-Plated	JIG-JAP0102G
BH. Copper-Plated	JIG-JAP0102C
BI. Gunmetal Black	JIG-JAP0102GB

VOLUME: 1 OZ OVER 1 ½ OZ | MARKINGS: ½ OZ, ¾ OZ

BJ. Stainless Steel	JIG-JAP0115ST
---------------------	---------------

VOLUME: ½ OZ OVER ¾ OZ | MARKINGS: ¼ OZ

BK. Stainless Steel	JIG-JAP1234ST
BL. Gold-Plated	JIG-JAP1234G
BM. Copper-Plated	JIG-JAP1234C
BN. Gunmetal Black	JIG-JAP1234GB

MATERIAL: 18/8 Stainless Steel

SIZE (20ML / 40ML) : H 3.5 in (9 cm) x 1.7 in (4.4 cm)

SIZE (25ML / 50ML) : H 4.3 in (11 cm) x D 1.8 in (4.6 cm)

VOLUME: 20 ML OVER 40 ML | MARKINGS: 10 ML, 30 ML

BO. Stainless Steel	JIG-JAP2040ST
---------------------	---------------

VOLUME: 25 ML OVER 50 ML | MARKINGS: 15 ML, 35 ML

BP. Stainless Steel	JIG-JAP2550ST
---------------------	---------------

LEOPOLD® JIGGER

MATERIAL Stainless Steel

SIZE H 3.3 in (8.5 cm) x D 2.1 in (5.3 cm)



VOLUME: 1 OZ OVER 2 OZ | MARKINGS: ¼ OZ, ½ OZ, ¾ OZ, 1 ½ OZ

BQ. Stainless Steel	JIG-LEO-0102ST
BR. Gold-Plated	JIG-LEO-0102G
BS. Copper-Plated	JIG-LEO-0102C
BT. Gunmetal Black	JIG-LEO-0102GB
BU. Banded Stainless Steel	JIG-LEOB-0102ST
BV. Banded Gold-Plated	JIG-LEOB-0102G
BW. Banded Copper-Plated	JIG-LEOB-0102C
BX. Banded Gunmetal Black	JIG-LEOB-0102GB

MATERIAL Stainless Steel

SIZE H 3.3 in (8.5 cm) x D 2.1 in (5.3 cm)

VOLUME: 30 ML OVER 60 ML | MARKINGS: 10 ML, 15 ML, 20 ML, 40 ML

BY. Stainless Steel	JIG-LEO-3060ST
BZ. Stainless Steel	JIG-LEOB-3060ST



STEPPED JIGGER

MATERIAL Nickel Silver-Plated Brass/Stainless Steel
SIZE H 2.5 in (6.4 cm) x D 2.2 in (5.6 cm)

VOLUME: 1 OZ OVER 2 OZ MARKINGS: ½ OZ, ¾ OZ, 1½ OZ	
CA. Stainless Steel	RES-JIG02ST
CB. Copper-Plated	RES-JIG01C
CC. Gunmetal Black	RES-JIG01GB
CD. Stainless Steel, No Handle	RES-JIG02ST



KORIKO® HEAVYWEIGHT JIGGER

MATERIAL Stainless Steel
FEATURES One solid piece of Stainless Steel
SIZE 3.6 in (9.1cm) x D 2.6 in (6.6cm)

VOLUME: 1 OZ OVER 2 OZ MARKINGS: ½ OZ, ¾ OZ, 1½ OZ	
CE. Stainless Steel	JIG-HKOR-0102ST



THE GIGGER

Reproduction of an antique, designed to measure a perfect 4:1 martini.

MATERIAL Aluminum
SIZE H 10.6 in (27 cm) x D 1.7 in (4.3 cm)

VOLUME: ¾ OZ OVER 3 OZ	
CF. Aluminum	JIG-GIG3403AL



MEEHAN'S MIXOLOGY SPOONS

MATERIAL Stainless Steel
FEATURES Six spoons per set / Attached to a ring for easy toggling / Comes in a reusable tin box.
SIZE L 4.9 in (12.6 cm) x W 1 in (2.6 cm) x H 0.4 in (1 cm)

SPOON VOLUME: ¼ TSP, BARSPOON, ¾ TSP, 1 TSP, ½ TBSP, 1 TBSP	
CG. Stainless Steel	MHN-OTH-SPNS

BAR SPOONS & STIRRERS

ERGONOMIC COILS AND PERFECT BALANCE ARE TOUCHSTONES OF COCKTAIL KINGDOM BAR SPOONS.





BROMLEY BAR SPOON

Heavyweight Paddle Topper

MATERIAL Stainless Steel
SIZE H 14.17 in in (36.5 cm) x W 1 in (2.5 cm)

LENGTH: 36 CM

CH. Stainless Steel	BSP-BROM36-ST
CI. Gold-Plated	BSP-BROM36-G
CJ. Copper-Plated	BSP-BROM36-C
CK. Gunmetal Black	BSP-BROM36-GB



HOFFMAN BAR SPOON

Lightweight Paddle Topper

MATERIAL Stainless Steel
SIZE H 13.2 / 17 in (33.5 / 43.5 cm) x W 1 in (2.5 cm)

LENGTH: 33.5 CM

CL. Stainless Steel	BSP-HOF33ST
CM. Gold-Plated	BSP-HOF33G
CN. Copper-Plated	BSP-HOF33C
CO. Gunmetal Black	BSP-HOF33GB

LENGTH: 43.5 CM

CP. Stainless Steel	BSP-HOF43ST
---------------------	-------------



LEOPOLD® BAR SPOON

Smooth, coilless body, weighted topper, wide bowl

MATERIAL Stainless Steel
SIZE H 14 in (36.5 cm) x W 1 in (2.5 cm)

LENGTH: 36 CM

CQ. Stainless Steel	BSP-LEO36ST
CR. Gold-Plated	BSP-LEO36G
CS. Copper-Plated	BSP-LEO36C



MUDDLER BAR SPOON

Flat topper for pressing herbs

MATERIAL Stainless Steel with Muddler Top
SIZE H 11.8 / 15.7 in (30 / 40 cm) x W 1 in (2.5 cm)

LENGTH: 30 CM

CT. Stainless Steel	BSP-MUD30ST
---------------------	-------------

LENGTH: 40 CM

CU. Stainless Steel	BSP-MUD40ST
---------------------	-------------



TEARDROP™ BARSPOON

Simple, perfect, timeless

MATERIAL Stainless Steel

SIZE H 11.8 / 15.7 / 19.5 in (30 / 40 / 50 cm) x W 1 in (2.5 cm)

LENGTH: 30 CM

CV. Stainless Steel	BSP-TD30ST
CW. Gold-Plated	BSP-TD30G
CX. Copper-Plated	BSP-TD30C
CY. Gunmetal Black	BSP-TD30GB

LENGTH: 40 CM

CZ. Stainless Steel	BSP-TD40ST
DA. Gold-Plated	BSP-TD40G
DB. Copper-Plated	BSP-TD40C
DC. Gunmetal Black	BSP-TD40GB

LENGTH: 50 CM

DD. Stainless Steel	BSP-TD50ST
---------------------	-------------------



TRIDENT BARSPOON

MATERIAL Stainless Steel with trident top

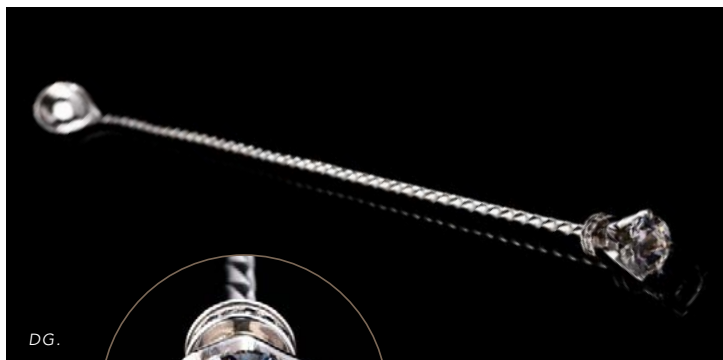
SIZE H 12.5 / 15.7 (31.5 / 40 cm) x W 1 in (2.5 cm)

LENGTH: 31.5 CM

DE. Stainless Steel	BSP-TRI315ST
---------------------	---------------------

LENGTH: 40 CM

DF. Stainless Steel	BSP-TRI40ST
---------------------	--------------------



BLACK DIAMOND BARSPOON

MATERIAL Solid silver barspoon with Swarovski crystal top and genuine black diamond details

SIZE L 17 in (43 cm)

LENGTH: 43 CM

DG. Solid Silver	RES-BSP43SV
------------------	--------------------



DH.



DI.



DJ.



DK.

BEACHBUM BERRY'S SKULL BAR SPOON

MATERIAL Stainless Steel

SIZE H 13.2 / 15.7 in (33.5 / 40 cm) x W 1 in (2.5 cm)

LENGTH: 33.5 CM

DH. Stainless Steel	BSP-SKL33ST
DI. Gold-Plated	BSP-SKL33G
DJ. Copper-Plated	BSP-SKL33C
DK. Gunmetal Black	BSP-SKL33GB



DL.



DM.



DN.



DO.

BULU™ BARWARE PINEAPPLE BAR SPOON

MATERIAL Stainless Steel

SIZE H 13.2 / 17 in (33.5 / 43.5 cm) x W 1 in (2.5 cm)

LENGTH: 33.5 CM

DL. Stainless Steel	BSP-PNP33ST
DM. Gold-Plated	BSP-PNP33G
DN. Copper-Plated	BSP-PNP33C

LENGTH: 43.5 CM

DO. Stainless Steel	BSP-PNP43ST
---------------------	-------------



DP.

DAVID WONDRICH JIM GRAY™ BAR SPOON

MATERIAL Stainless Steel with Silver-Plated EPNS finish

SIZE H 13 in (33 cm) x W 1.2 in (3 cm)

LENGTH: 33.5 CM

DP. Silver-Plated EPNS	WON-BSP-JG33SV
------------------------	----------------



DQ.



DR.

DE SOTO DOUBLE TEARDROP™ STIRRER

MATERIAL Stainless Steel

SIZE H 13.2 / 17 in (33.5 / 43.5 cm) x W 0.4 in (0.9 cm)

LENGTH: 33.5 CM

DQ. Stainless Steel	BSP-SOT33ST
---------------------	-------------

LENGTH: 43.5 CM

DR. Stainless Steel	BSP-SOT43ST
---------------------	-------------

STRAINERS

ROOTED IN CLASSIC STYLES AND MODERN USABILITY,
WE BROUGHT THE INDUSTRY INTO A NEW ERA WITH OUR
KORIKO® AND BUSWELL® DESIGNS.





KORIKO® HAWTHORNE STRAINER

This patented design is the benchmark in modern barware innovation.

MATERIAL Stainless Steel
SIZE L 6 in (15.2 cm) x W 4 in (10.1 cm)

DS. Stainless Steel	STR-KOR-STL
DT. Gold-Plated	STR-KOR-G
DU. Copper-Plated	STR-KOR-C
DV. Gunmetal Black	STR-KOR-GB



KORIKO® 2-PRONG HAWTHORNE STRAINER

MATERIAL Stainless Steel
SIZE L 6.7 in (17 cm) x D 3.7 in (9.5 cm)

DW. Stainless Steel	STR-KOR2PR-STL
DX. Gold-Plated	STR-KOR2PR-G
DY. Copper-Plated	STR-KOR2PR-C
DZ. Gunmetal Black	STR-KOR2PR-GB



BUSWELL® 4-PRONG HAWTHORNE STRAINER

MATERIAL Stainless Steel
SIZE L 6.7 in (17 cm) x D 3.7 in (9.5 cm)

EA. Stainless Steel	STR-BUS4PR-ST
EB. Gold-Plated	STR-BUS4PR-G
EC. Copper-Plated	STR-BUS4PR-C
ED. Gunmetal Black	STR-BUS4PR-GB



ANTIQUE-STYLE HAWTHORNE STRAINER

Petite design is a perfect match for our 550ml mixing glasses.

MATERIAL Stainless Steel
SIZE L 6.5 in (16.4 cm) x W 3.2 in (8.1 cm)

EE. Stainless Steel	STR-ANTQ-ST
EF. Gold-Plated	STR-ANTQ-G
EG. Copper-Plated	STR-ANTQ-C



LARGE ANTIQUE-STYLE HAWTHORNE STRAINER

Works well with our shaking tins and larger mixing glasses.

MATERIAL Stainless Steel
SIZE L 7.4 in (18.9 cm) x W 3.6 in (9.1 cm)

EH. Stainless Steel	STR-LANTQ-ST
EI. Gold-Plated	STR-LANTQ-G
EJ. Copper-Plated	STR-LANTQ-C



COCO™ STRAINER

A tea style strainer designed specifically for use with cocktails.

MATERIAL Stainless Steel
SIZE L 9.25 in (23.5 cm) x W 3.6 in (9.3 cm) x D 2.6 in (6.7 cm)

EK. Stainless Steel	STR-COCO-ST
EL. Gold-Plated	STR-COCO-G
EM. Copper-Plated	STR-COCO-C
EN. Gunmetal Black	STR-COCO-GB



PREMIUM JULEP STRAINER

Pairs well with a mixing glass.

MATERIAL Stainless Steel
SIZE L 6.6 in (16.7 cm) x W 3 in (7.7 cm) x D 0.8 in (2 cm)

EO. Stainless Steel / Mirror Finish	STR-JUL-MIR
EP. Stainless Steel / Matte Finish	STR-JUL-MAT
EQ. Gold-Plated	STR-JUL-G
ER. Copper-Plated	STR-JUL-C
ES. Gunmetal Black	STR-JUL-GB

DASHERS & POURERS





BITTERS BOTTLE WITH CORK DASHER TOP

MATERIAL (VESSEL) Glass
MATERIAL (TOP) Stainless Steel and Cork
SIZE (50 ML) H 5.5 in (14 cm) x D 2 in (5 cm)
SIZE (100 ML) H 6.3 in (16 cm) x D 2.6 in (6.5 cm)

VOLUME: 50 ML (1.7 OZ)

ET. Classic, Stainless Steel Dasher Top	BTB-RCD50ST
EU. Classic, Gold-Plated Dasher Top	BTB-RCD50G
EV. Classic, Copper-Plated Dasher Top	BTB-RCD50C
EW. Beveled, Stainless Steel Dasher Top	BTB-BCD50ST
EX. Beveled, Gold-Plated Dasher Top	BTB-BCD50G
EY. Beveled, Copper-Plated Dasher Top	BTB-BCD50C

VOLUME: 100 ML (3.4 OZ)

EZ. Classic, Stainless Steel Dasher Top	BTB-RCD100ST
FA. Classic, Gold-Plated Dasher Top	BTB-RCD100G
FB. Classic, Copper-Plated Dasher Top	BTB-RCD100C
FC. Beveled, Stainless Steel Dasher Top	BTB-BCD100ST
FD. Beveled, Gold-Plated Dasher Top	BTB-BCD100G
FE. Beveled, Copper-Plated Dasher Top	BTB-BCD100C



THREADED BITTERS BOTTLE WITH IMPERIAL STYLE DASHDART®

MATERIAL (VESSEL) Glass
MATERIAL (TOP) Aerospace-Grade Aluminum with Threaded Interior
SIZE H 6.7 in (17 cm) x D 2.75 in (7 cm)



VOLUME: 100 ML (3.4 OZ)

FF. Silver Color	BTB-RDD100SV
FG. Gold Color	BTB-RDD100G
FH. Copper Color	BTB-RDD100C
FI. Black Color	BTB-RDD100B

3-PACK DASHER TOP

MATERIAL Stainless Steel and Cork Base
SIZE H 2 in (5 cm) x D 1 in (2.5 cm)



FJ. Stainless Steel	BTB-CD3PK-ST
FK. Gold-Plated	BTB-CD3PK-G
FL. Copper-Plated	BTB-CD3PK-C

2-PACK DASHDART®

MATERIAL Aerospace-Grade Aluminum with Threaded Interior
SIZE H 1.8 in (4.5 cm) x D 1.1 in (2.8 cm)



FM. Silver Color	BTB-DD2PK-SV
FN. Antique Gold Color	BTB-DD2PK-G
FO. Copper Color	BTB-DD2PK-C
FP. Black	BTB-DD2PK-B

SPEED POURER

MATERIAL Stainless Steel with Rubber Base
SIZE H 4.1 in (10.5 cm) x D 1.2 in (3 cm)



FQ. Stainless Steel, Pack of 6	OTH-SPDPR6ST
FR. Copper-Plated, Pack of 4	OTH-SPDPR3C

WIDE-MOUTH SPEED POURER

MATERIAL Stainless Steel with Rubber Base
SIZE H 3.9 in (10 cm) x D 1.3 in (3.5 cm)



FS. Stainless Steel, Pack of 4	OTH-SPDPR4ST
FT. Copper-Plated, Pack of 3	OTH-SPDPR4C

KNIVES





FU.

BUSWELL® PARING KNIFE

The utilitarian workhorse

MATERIAL Blade with Polypropylene Handle and Sheath
SIZE L 7.7 in (19.7 cm) x w 1 in (2.5 cm)

FU. 3.5" Blade

KNF-BUS-PAR



FV.

IKURA™ BARTENDER'S UTILITY KNIFE

MATERIAL Forged Steel Blade and Wood Handle
FEATURES 6.7 in (17 cm) blade with a 50 / 50 edge
SIZE L 11.2 in (28.5 cm) x W 1.4 in (3.5 cm)

FV. Pakkawood Handle

OTH-KNF-IK-PK

BLACK MICARTA



FW.

FX.

FY.

FZ.

GA.

OVERLORD™ KNIVES

Bringing premium, chef-quality knives to the bar

MATERIAL Composite steel / Damascus Steel
FEATURES Sharpened at a 14% angle
SIZE (PARING) L 7.8 in (20 cm) x W 0.8 in (2.2 cm)
SIZE (UTILITY) L 9.3 in (23.7 cm) x W 0.9 in (2.3 cm)
SIZE (NAKIRI) L 11.6 in (29.5 cm) x W 2.3 in (6 cm)
SIZE (CHEF) L 13.1 in (33.3 cm) x W 1.8 in (4.8 cm)
SIZE (SERRATED) L 12.5 in (32 cm) x W 1.1 in (3 cm)

BLACK MICARTA HANDLE

FW. 3.5" Paring Knife	KNF-OLC-PAR
FX. 5" Utility Knife	KNF-OLC-UTL
FY. 6.8" Nakiri Knife	KNF-OLC-NK
FZ. 8" Chef Knife	KNF-OLC-CHF
GA. 8" Serrated Knife	KNF-OLC-SER

PAKKAWOOD HANDLE

GB. 3.5" Paring Knife	KNF-OLPK-PAR
GC. 5" Utility Knife	KNF-OLPK-UTL
GD. 6.8" Nakiri Knife	KNF-OLPK-NK
GE. 8" Chef Knife	KNF-OLPK-CHF
GF. 8" Serrated Knife	KNF-OLPK-SER

KNIFE BLOCK

GG. Overlord™ Knife Block Set	SET-OLC-KBA
-------------------------------	-------------

PAKKAWOOD HANDLE



GB.

GC.

GD.

GE.

GF.



GG.

GARNISH TOOLS & ACCESSORIES





PEELERS

MATERIAL (CITRUS) Steel Blade with Plastic Body
MATERIAL (BUSWELL) Serrated Blade with Stainless Steel Body
SIZE L 4.7 in (12 cm) x W 2.2 in (5.7 cm)
SIZE L 4.7 in (12 cm) x W 2.5 in (6.3 cm)

CITRUS PEELER

GH. Black OTH-PLR-BLK

BUSWELL® CAST METAL PEELER

GI. Stainless Steel OTH-BUSPLR-ST

GJ. Gold-Plated OTH-BUSPLR-G

GK. Copper-Plated OTH-BUSPLR-C



CHANNEL KNIFE

MATERIAL Black Walnut Wood Handle
SIZE L 6.1 in (15.5 cm) x W 0.9 in (2.25 cm)

GL. Stainless Steel OTH-KNF-CHN



JUICERS

MATERIAL (STANDARD) 100% Cast Aluminum
MATERIAL (QUEEN) 100% Cast Aluminum
SIZE (STANDARD) L 9 in (22.8 cm) x W 2.7 in (7 cm) x H 2 in (5.2 cm)
SIZE (QUEEN) L 9.6 in (24.5 cm) x W 3.4 in (8.3 cm) x H 2.4 in (6 cm)

MEXICAN BEEHIVE™ JUICER

GM. Aluminum OTH-JUC-BEE

QUEEN BEEHIVE™ JUICER

GN. Aluminum OTH-JUC-QBEE



CHURCH KEY

MATERIAL Stainless Steel
SIZE L 5.9 in (14.9 cm) x W 1.65 in (4 cm)

GO. Stainless Steel OTH-CHKY-ST

GP. Gold-Plated OTH-CHKY-G

GQ. Copper-Plated OTH-CHKY-C



MUDDLERS

MATERIAL (BAD ASS MUDDLER) Food-Safe Plastic
MATERIAL (NATURAL) Wood (Non-Treated, Non-Varnished)
MATERIAL (CATO™ MUDDLER) Natural Hardwood
SIZE (BAD ASS MUDDLER) L 9.6 in (24.5 cm) x D 1.6 in (4 cm)
SIZE (NATURAL) L 10 in (25.3 cm) x D 1.25 in (3.2 cm)
SIZE (CATO™ MUDDLER) L 7.5 in (19 cm) x D 1.1 in (2.8 cm)

BAD ASS MUDDLER	
GR. Black	OTH-MUD-BASS
NATURAL WOOD MUDDLER	
GS. Natural Hardwood	OTH-MUD-WOOD
CATO™ MUDDLER	
GT. Wood	WON-MUD-CATO



GARNISH TONGS

MATERIAL Stainless Steel
SIZE L 10 in (25 cm)

GU. Stainless Steel	OTH-GRTNG-ST
GV. Gold-Plated	OTH-GRTNG-G
GW. Copper-Plated	OTH-GRTNG-C
GX. Gunmetal Black	OTH-GRTNG-GB



ATOMIZERS

MATERIAL (ATOMIZER) Glass with Plastic Cap
MATERIAL (TRIOMPHE) Plastic
SIZE (ATOMIZER) H 5.5 in (14 cm) x D 1.25 in (3.1 cm)
SIZE (TRIOMPHE) H 6.2 in (16 cm) x D 1.9 in (5 cm)

ATOMIZER	
GY. Aluminum	OTH-ATM50AL
MORGENHALER TRIOMPHE ATOMIZER	
GZ. Chrome Color	MRG-ATM-AL



DAVID WONDRICH ASHLEY NUTMEG GRATER

MATERIAL Silver-Plated
SIZE H 2.7 in (7 cm) x D 1.8 in (4.8 cm)

HA. Silver-Plated EPNS	WON-OTH-NTMG
------------------------	--------------



HB.

SWIZZLE STICK

MATERIAL Bois Lélé Tree
SIZE L 10-12 in (25-30 cm)

HB. Natural Wood

OTH-SWZSTK



HC.

SHANNON
MUSTIPHER
COLLECTION

MUSTIPHER COCKTAIL STENCILS

MATERIAL Powder Coated Stainless Steel
SIZE L 6 in (15.2 cm) x W 4 in (10 cm)

HC. Stencils, Pack of 3

SMU-OTH-STNC-3



HD.

HF.

HE.

HG.

HH.

HI.

COCKTAIL PICKS

MATERIAL Stainless Steel
SIZE (BROMLEY) L 4.3 in (11 cm) x W 0.8 (2 cm)
SIZE (COCKTAIL PICK) L 4in (10.15cm)

BROMLEY COCKTAIL PICKS

HD. Stainless Steel, Pack of 12

OTH-PICK-BROM12ST

HE. Gold-Plated, Pack of 12

OTH-PICK-BROM12G

HF. Copper-Plated, Pack of 12

OTH-PICK-BROM12C

COCKTAIL PICKS

HG. Stainless Steel, Pack of 12

OTH-PICK12ST

HH. Gold-Plated, Pack of 12

OTH-PICK12G

HI. Copper-Plated, Pack of 12

OTH-PICK12C



HJ.



HK.

STEEL STRAWS

MATERIAL Stainless Steel
SIZE 5 / 7.5 in (12.7/19 cm) D 0.2 in (0.6 cm)

HJ. 5 in (12.7cm)

STRW-05ST24

HK. 7.5 in (19cm)

STRW-75ST24



HL.

BUSWELL REUSABLE STRAWS

MATERIAL Polypropylene
SIZE L 4in (10.15cm)

HL. 7 7/8in (20cm), Pack of 200

STRW-BUS-78PP200

ICE TOOLS & MOLDS





TALON TONGS

MATERIAL Stainless Steel

SIZE L 7.5 in (19 cm) x W 2.6 in (6.5 cm) x H 1 in (2.5 cm)

HM. Stainless Steel	OTH-TLNTNG-ST
HN. Gold-Plated	OTH-TLNTNG-G
HO. Copper-Plated	OTH-TLNTNG-C



HP.



HQ.

ICE PICKS

MATERIAL Stainless Steel with Wood Handle

SIZE (ANVIL) L 7 in (17.8 cm) x W 1.5 in (3.8 cm) x H 0.9 in (2.2 cm)

SIZE (PITCHFORK) L 7 in (17.8 cm) x W 1.5 in (3.8 cm) x H 0.9 in (2.2 cm)

HP. Anvil™ Ice Pick	ICE-PICK-ANV
HQ. Pitchfork Ice Pick	ICE-PICK-PFK



HR.



HS.

ICE TAPPERS

MATERIAL Stainless Steel or Brass with Plastic Handle

SIZE L 10.6 in (27 cm) x W 1.8 in (4.5 cm) x H 0.9 in (2.3 cm)

HR. Stainless Steel, Black Handle	ICE-TPR-STBL
HS. Brass, Black Handle	ICE-TPR-BRSBL



HT.

HU.



HV.

THE "SCHMALLET" ICE Mallet AND BAG

MATERIAL Wood Mallet with Canvas Bag

SIZE (BAG) L 16.5 in (42 cm) x W 8.5 in (21.5 cm)

SIZE (Mallet) L 13.5 in (34 cm) x W 5.3 in (13.5 cm)

HT. The "Schmallet" Ice Mallet	ICE-SHMLT
HU. Lewis Bag	OTH-BAG02LEW
HV. "Schmallet" Ice Mallet and LewisBag	KIT-SHMLT-LEW



ICE TRAYS

MATERIAL (1.25" TRAY) Silicone / TPR / PP

MATERIAL (ICE BALL) PP

MATERIAL (2", 2.5", COLLINS) TPR

SIZE (1.25" TRAY) L 7 in (18 cm) x W 4.4 in (11.2 cm) x H 1.3 in (3.4 cm)

SIZE (2" TRAY) L 7 in (18 cm) x W 4.8 in (12 cm) x H 2.2 in (5.6 cm)

SIZE (2.5" TRAY) L 5.6 in (14.6 cm) x W 5.6 in (14.6 cm) x H 2.7 in (7 cm)

SIZE (COLLINS) L 5.6 in (14.6 cm) x W 6.3 in (16 cm) x H 1.3 in (3.4 cm)

SIZE (ICE BALL) L 5.6 in (14.2 cm) x W 5.6 in (14.2 cm) x H 2.5 in (6.4 cm)

HW. 1.25in Square Ice Cube Tray, Green	ICE-SQU125GR
HX. 2in Square Ice Cube Tray, Blue	ICE-SQU02BL
HY. 2in Square Ice Cube Tray, Gray	ICE-SQU02GRY
HZ. 2.5in Square Ice Cube Tray, Gray	ICE-SQU25GRY
IA. Collins Ice Mold	ICE-COL525
IB. 2in Ice Ball Mold - Blue	ICE-BALL2IN

ICE BALL MAKERS

MATERIAL Aerospace-Grade Aluminum

FEATURES Uses gravity and thermal conductivity to create a perfect sphere

SIZE (55 MM) H 6 in (15 cm) x D 4 in (10 cm)

SIZE (70 MM) H 7.5 in (19 cm) x D 5.5 in (14 cm)



55 MM ICE SPHERE

IC. Silver Finish	ICE-55IBM-SV
ID. Gold Finish	ICE-55IBM-G
IE. Copper Color	ICE-55IBM-C
IF. Black Finish	ICE-55IBM-B

70 MM ICE SPHERE

IG. Silver Finish	ICE-70IBM-SV
IH. Gold Finish	ICE-70IBM-G
II. Black Finish	ICE-70IBM-B

SETS & KITS





COCKTAIL KINGDOM® ESSENTIAL SETS

Everything you need to start making cocktails,
in one giftable box.

- INCLUDES**
- (1) Mixing Glass, 550 ml
 - (1) Bar spoon, 33.5 cm
 - (1) Japanese Style Jigger 1oz / 2oz (30 ml / 60 ml)
 - (1) Set of Two Koriko® Weighted Shaking Tins
 - (1) Koriko® Hawthorne Strainer

IJ.	Stainless Steel, 6 Piece Set	KIT-ESSN-SET-ST
IK.	Gold-Plated, 6 Piece Set	KIT-ESSN-SET-G
IL.	Copper-Plated, 6 Piece Set	KIT-ESSN-SET-C
IM.	Gunmetal Black, 6 Piece Set	KIT-ESSN-SET-GB



BARWARE ROLL-UP KIT

- INCLUDES**
- (1) Barware Roll-Up
 - (1) Japanese Style Jigger 1 oz / 2 oz, Stainless Steel
 - (1) Hoffman® Bar Spoon, 33.5 cm, Stainless Steel
 - (1) Koriko® Hawthorne Strainer, Stainless Steel
 - (1) Garnish Tongs (25 cm)
 - (1) Citrus Peeler
 - (1) Channel Knife

IN.	Army Green Bag, 7 Piece Set	KIT-ROLL01GRN
IO.	Black Bag, 7 Piece Set	KIT-ROLL01BLK



DAVID WONDRICH STIRRED SELECTION

- INCLUDES**
- (1) Clear Berry Wall™ Footed Mixing Glass
 - (1) Jim Gray™ Bar Spoon
 - (1) Lindley-Pick™ Hawthorne Strainer



IP.	Stirred Selection, 3 Piece Set	KIT-WON-STIR
-----	--------------------------------	--------------

BAGS & CASES





BARWARE ROLL-UP

MATERIAL Waxed canvas and leather accents with metal accessories
SIZE W 17.5 in (44.5 cm) x L 6.3 in (16 cm)

IQ. Army Green	OTH-ROLL01GRN
IR. Black	OTH-ROLL01BLK



BARTENDER'S BACKPACK

MATERIAL Bees-waxed canvas body with leather trim and water-resistant nylon lining
SIZE L 7 in (17.7 cm) x W 11 in (28 cm) x H 19 in (48 cm)



IS. Black	OTH-WAXBP-BLK
IT. Brown	OTH-WAXBP-BRN
IU. Green	OTH-WAXBP-GRN
IV. Gray	OTH-WAXBP-GRY

DRINKWARE





IW.



BUSWELL® STACKABLE SHOT GLASSES



MATERIAL Glass

SIZE H 2.25 in (8.9 cm) x D 1.75 in (7.6 cm)

VOLUME: 1 OZ (30 ML)

IW. Case of 24

GLA-BUSSHOT01-24



IX.



IY.



IZ.



JA.



JB.



JC.



JD.



JE.

STEMMED GLASSES



MATERIAL Glass

SIZE (LEOPOLD® 3.75 OZ)

H 6 in (15 cm) x D 4 in (10 cm)

SIZE (LEOPOLD® 6 OZ)

H 7.5 in (19 cm) x D 5.5 in (14 cm)

SIZE (LEOPOLD® 7.5 OZ)

H 5 in (12.5 cm) x D 3.5 in (9 cm)

SIZE (NICK AND NORA 5 OZ)

H 6 in (15 cm) x D 2.9 in (7.3 cm)

SIZE (BEATRICE® 6.5 OZ)

H 6 in (15 cm) x D 3.5 in (8.9 cm)

SIZE (CORDIAL 3 OZ)

H 5.25 in (13.3 cm) x D 2.5 in (6.3 cm)

LEOPOLD® TASTING COUPE 3.75 OZ (112.5 ML)

IX. Classic, 6 Pack

GLA-LEOCP375-6

Classic, Case of 24

GLA-LEOCP375-24

LEOPOLD® COUPE 6 OZ (180 ML)

IY. Classic, 6 Pack

GLA-LEOCP6-6

Classic, Case of 24

GLA-LEOCP6-24

LEOPOLD® COUPE 7.5 OZ (225 ML)

IZ. Classic, 6 Pack

GLA-LEOCP75-6

Classic, Case of 24

GLA-LEOCP75-24

NICK AND NORA 5 OZ (150 ML)

JA. Classic, 6 Pack

GLA-NCK5-6

Classic, Case of 24

GLA-NCK5-24

JB. Gold Trim, 6 Pack

GLA-NCK5G-6

Gold Trim, Case of 24

GLA-NCK5G-24

JC. Copper Trim, 6 Pack

GLA-NCK5C-6

Copper Trim, Case of 24

GLA-NCK5C-24

CORDIAL COCKTAIL GLASS 3 OZ (90 ML)

JD. 4 Pack

WON-GLA-GRG03-4

Case of 24

WON-GLA-GRG03-24

BEATRICE® COUPE 6.5 OZ (200 ML)

JE. 6 Pack

GLA-BEACP65-6

Case of 24

GLA-BEACP65-24

STACKABLE!



JF.



JG.



JH.



JI.



JJ.



JK.



JL.



JM.

ROCKS GLASSES



MATERIAL Glass

SIZE (SINGLE STACKABLE) H 3 in (7.6 cm) x D 2.88 in (7.3 cm)

SIZE (SINGLE) H 7.5 in (19 cm) x D 5.5 in (14 cm)

SIZE (DOUBLE) H 5 in (12.5 cm) x D 3.5 in (9 cm)

SIZE (DANUTA™) H 4 in (10.3 cm) x D 3.25 in (8.3 cm)

SINGLE ROCKS GLASS 6 OZ (180 ML)

JF. Yarai® Stackable Rocks Glass, 6 Pack	GLA-YARRCK-STK6-6
Yarai® Stackable Rocks Glass, Case of 36	GLA-YARRCK-STK6-36

SINGLE ROCKS GLASS 7.5 OZ (225 ML)

JG. Yarai® Rocks Glass, 6 Pack	GLA-YARRCK75-6
Yarai® Rocks Glass, Case of 24	GLA-YARRCK75-24
JH. Kiruto™ Rocks Glass, 6 Pack	GLA-KIRRCK75-6
Kiruto™ Rocks Glass, Case of 24	GLA-KIRRCK75-24

DOUBLE ROCKS GLASS 10 OZ (295 ML)

JI. Yarai® Double Rocks Glass, 6 Pack	GLA-YARRCK10-6
Yarai® Double Rocks Glass, Case of 24	GLA-YARRCK10-24
JJ. Kiruto™ Double Rocks Glass, 6 Pack	GLA-KIRRCK10-6
Kiruto™ Double Rocks Glass, Case of 24	GLA-KIRRCK10-24

DANUTA™ DOUBLE ROCKS GLASS 15 OZ (450 ML)

JK. Classic, 4 Pack	GLA-DANRCK15-4
Classic, Case of 24	GLA-DANRCK15-24
JL. Gold Trim, 4 Pack	GLA-DANRCK15G-4
Gold Trim, Case of 24	GLA-DANRCK15G-24
JM. Silver Trim, 4 Pack	GLA-DANRCK15SV-4
Silver Trim, Case of 24	GLA-DANRCK15SV-24

BUSWELL® COLLINS GLASS



MATERIAL Glass

SIZE H 6 in (15 cm) x D 2.6 in (6.5 cm)

VOLUME: 12 OZ (360 ML)

JN. Buswell™ Collins Glass, 6 Pack	GLA-BUSCOL12-6
Buswell™ Collins Glass, Case of 48	GLA-BUSCOL12-48



JN.



PEARL DIVER GLASS WITH ICE SPHERE



BEACHBUM BERRY'S PEARL DIVER GLASS



MATERIAL Glass

SIZE H 5.6 in (14.3 cm) x D 3.6 in (9.2 cm)

VOLUME: 12 OZ (360 ML)

JO. Pearl Diver Glass, 4 Pack

BBB-GLA-PRL12-4

Pearl Diver Glass, 24 Pack

BBB-GLA-PRL12-24



SAUNDERS COLLECTION GLASSWARE



MATERIAL Glass

SIZE (TOT GLASS) H 3.2 in (8.1 cm) x D 2.8 in (7.1 cm)

SIZE (SOUR GLASS) H 6 in (15.2 cm) x D 3.2in (8.1 cm)

TOT GLASS 4 OZ (118 ML)

JP. Engraved Schooner Edition, Set of 4

SAU-GLA-TOT-4-ENG

Engraved Schooner Edition, Set of 16

SAU-GLA-TOT-16-ENG

SOUR GLASS 7OZ (221ML)

JQ. 6 Pack

SAU-GLA-SG7-6

Case of 24

SAU-GLA-SG7-24



EMBOSSED CROSS DESIGN



VELADORA MEZCAL GLASSES



MATERIAL Glass

SIZE H 2.4 in (6 cm)

VOLUME: 2.7 OZ (80 ML)

JR. 6 Pack

GLA-VEL28-6

Case of 24

GLA-VEL28-24

ACRYLIC DRINKWARE

Designed with pools, patios, and rooftops in mind—shatterproof variations of our standard glassware.



JS.



JT.



JU.



JV.



JW.

MATERIAL Acrylic

SIZE (NICK AND NORA 5 OZ)

H 6 in (15 cm) x D 2.9 in (7.3 cm)

SIZE (LEOPOLD® 7 OZ)

H 5 in (12.5 cm) x D 3.5 in (9 cm)

SIZE (YARAI® DOUBLE ROCKS 10 OZ)

H 5 in (12.5 cm) x D 3.5 in (9 cm)

SIZE (BUSWELL® COLLINS 12 OZ)

H 6 in (15 cm) x D 2.6 in (6.5 cm)

SIZE (PEARL DIVER 12 OZ)

H 5.6 in (14.3 cm) x D 3.6 in (9.2 cm)

ACRYLIC NICK AND NORA 5OZ (150 ML)

JS. 6 Pack

GLA-NCK5ACR-6

Case of 24

GLA-NCK5ACR-24

LEOPOLD® ACRYLIC COUPE 7OZ (207 ML)

JT. 6 Pack

GLA-LEOCP7ACR-6

Case of 24

GLA-LEOCP7ACR-24

YARAI® ACRYLIC DOUBLE ROCKS GLASS 10 OZ (295 ML)

JU. 6 Pack

GLA-YARRCK10ACR-6

Case of 24

GLA-YARRCK10ACR-24

BUSWELL™ ACRYLIC COLLINS GLASS 12 OZ (360 ML)

JV. 6 Pack

GLA-BUSCOL12-ACR-6

Case of 24

GLA-BUSCOL12-ACR-24

ACRYLIC PEARL DIVER 12 OZ (360 ML)

JW. 4 Pack

BBB-GLA-PRL12ACR-4

Case of 32

BBB-GLA-PRL12ACR-32





MINI MULE SHOTS

A proper copper mule, pocket-sized.

MATERIAL Copper

SIZE H 2.7 in (7 cm) x W 4.1 in (10.5 cm with handle) x D 2.3 in (6 cm)

VOLUME: 5 OZ (148 ML)

JX. Copper, 4 Pack

GLA-MUL05C-4

Copper, 16 Pack

GLA-MUL05C-16



MOSCOW MULE MUG

MATERIAL Copper

SIZE H 4.5 in (11.4 cm) x D 3.4 in (8.6 cm)

VOLUME: 12 OZ (360 ML)

JY. Copper

GLA-MUL12C



JULEP CUP

The classic shape redesigned in lightweight stainless steel for modern bars.

MATERIAL Stainless Steel

SIZE H 3 in (7.6 cm) x D 3 in (7.6 cm)

VOLUME: 12 OZ (360 ML)

JZ. Stainless Steel, Mirror Finish

GLA-JUL12ST-MIR

KA. Gold-Plated

GLA-JUL12ST-G

KB. Copper-Plated

GLA-JUL12ST-C

KC. Gunmetal Black

GLA-JUL12ST-GB

KD. Silver-Plated

GLA-JUL12ST-SV



BEACHBUM BERRY'S SWIZZLE CUP

MATERIAL Stainless Steel

SIZE 3 in (7.6 cm) x D 3 in (7.6 cm)

VOLUME: 14 OZ (414 ML)

KE. Stainless Steel

BBB-GLA-SWZ14



KF.



KG.

CERAMIC SHOT GLASSES



MATERIAL Ceramic

SIZE (AGAVE) H 1.7 in (4.5 cm) x D 1.9 in (4.9 cm)

SIZE (ARTICHOKE) H 1.7 in (4.5 cm) x D 1.9 in (4.9 cm)

VOLUME: 1.5 OZ (44 ML)

KF. Agave Shot Glass, 6 Pack

GLA-SHOT-AGAVE-6

Agave Shot Glass, 24 Pack

GLA-SHOT-AGAVE-24

KG. Artichoke Shot Glass, 6 Pack

GLA-SHOT-ARTI-6

Artichoke Shot Glass, 24 Pack

GLA-SHOT-ARTI-24



KH.



AGAVE MUG



MATERIAL Ceramic

SIZE H 3.54 in (8.9 cm) x D 3.3 in (8.3 cm)

VOLUME: 10.5 OZ (310 ML)

KH. Agave Mug

GLA-MUG-AGAVE

Agave Mug, Case of 24

GLA-MUG-AGAVE-24



KI.

DOLL HEAD MUG



MATERIAL Ceramic

SIZE H 5 in (12.5 cm) x D 4 in (10 cm)

VOLUME: 15 OZ (550 ML)

KI. Doll Head Mug

GLA-MUG-DOLL-15

Doll Head Mug, Case of 24

GLA-MUG-DOLL-15-24



KJ.



BEACHBUM BERRY'S DEEP SIX COMMUNAL BOWL

MATERIAL Ceramic

SIZE L 9.8 in (25 cm) x W 4.9 in (12.5 cm) H 7.4 in (19 cm)

VOLUME: 40 OZ (1.18 L)

KJ. Deep Six Communal Bowl

BBB-BWL-DP6



KK.



BULU™ PINEAPPLE BOWL

MATERIAL Ceramic

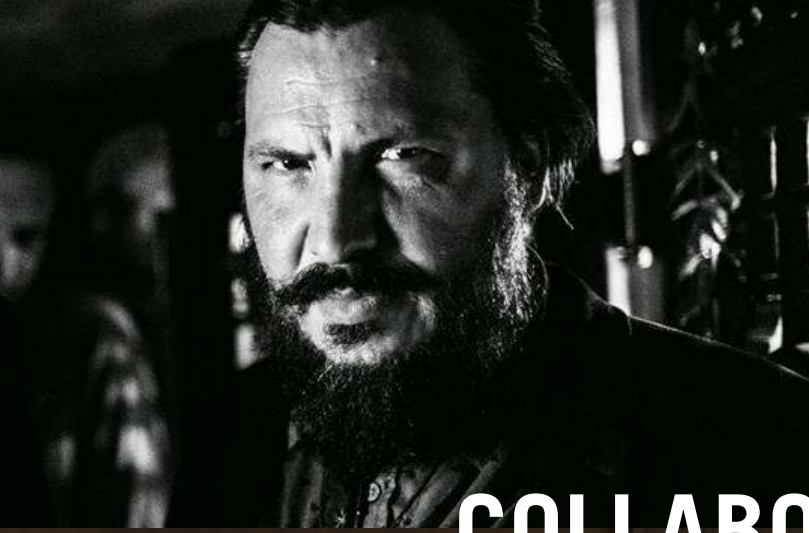
SIZE L 12.7 in (30.5 cm) x W 6.7 in (17 cm) x H 3.4 (8.6 cm)

VOLUME: 56 OZ (1.65 L)

KK. Pineapple Bowl

OTH-BULU-BOWL





COLLABORATIONS



BEACHBUM BERRY BARWARE

Once described by the New York Times as “the Indiana Jones of Tiki,” Beachbum Berry is THE authority on the 20th-century tropical cocktail revolution in America. A seasoned lecturer and 7-time author on the subject, our collaboration with Beachbum brings a fresh island vibe and resurrects designs lost in time.



BEACHBUM BERRY SKULL BAR SPOON

MATERIAL Stainless Steel
SIZE H 13.2 / 15.7 in (33.5 / 40 cm) x W 1 in (2.5 cm)

LENGTH: 33.5 CM	
KL. Stainless Steel	BSP-SKL33ST
KM. Gold-Plated	BSP-SKL33G
KN. Copper-Plated	BSP-SKL33C
KO. Gunmetal Black	BSP-SKL33GB



PEARL DIVER GLASS WITH ICE SPHERE



BEACHBUM BERRY GLASSWARE

MATERIAL (PEARL DIVER, ZOMBIE) Glass
MATERIAL (ACRYLIC PEARL DIVER) Acrylic
SIZE H 5.6 in (14.3 cm) x D 3.6 in (9.2 cm)
SIZE H 6.9 in (17.5 cm) x 2.36 in (5.9 cm)



PEARL DIVER GLASS 12 OZ (360 ML)	
KP. 4 Pack	BBB-GLA-PRL12-4
Case of 24	BBB-GLA-PRL12-24
ACRYLIC PEARL DIVER GLASS 12 OZ (360 ML)	
KQ. 4 Pack	BBB-GLA-PRL12ACR-4
Case of 32	BBB-GLA-PRL12ACR-32
ZOMBIE GLASS 15 OZ (450 ML)	
KR. Set of 2	BBB-GLA-ZMB15-2
Case of 24	BBB-GLA-ZMB15-24





KS.

BEACHBUM BERRY'S DEEP SIX COMMUNAL BOWL

MATERIAL Ceramic

SIZE L 9.8 in (25 cm) x W 4.9 in (12.5 cm) H 7.4 in (19 cm)

VOLUME: 40 OZ (1.18 L)

KS. Deep Six Communal Bowl **BBB-BWL-DP6**



KT.



BEACHBUM BERRY'S NAVY GROG CONE KIT

MATERIAL Stainless Steel

SIZE H 5.6 in (14.3 cm) x D 3.6 in (9.2 cm)

KT. Metal Cone and Rod **BBB-NVYGR-ST**



KU.



BEACHBUM BERRY'S SWIZZLE CUP

MATERIAL Stainless Steel

SIZE 3in (7.6 cm) x D 3in (7.6 cm)

VOLUME: 14 OZ (414 ML)

KU. Stainless Steel **BBB-GLA-SWZ14**



KV.

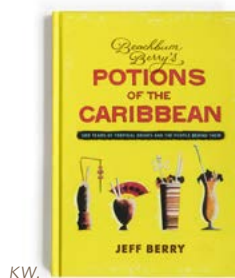


BEACHBUM BERRY'S TIKI COCKTAIL PICKS

MATERIAL Plastic

SIZE H 5.6 in (14.3 cm) x D 3.6 in (9.2 cm)

KV. Plastic, Pack of 144 **BBB-PICK144**



KW.



BEACHBUM BERRY'S POTIONS OF THE CARIBBEAN

- History with recipes, including 77 vintage Caribbean drink recipes, 16 of them never before published
- Lavishly illustrated with vintage graphics and rare historical photos
- Hardcover, 317 pages

JEFF BERRY

KW. Potions of the Caribbean **BOK-POTC-BBB**



KX.



BEACHBUM BERRY'S SIPPIN' SAFARI 10TH ANNIVERSARY EXPANDED EDITION

- In-depth Tiki history with recipes, 14 of them never-before-published
- Completely redesigned featuring new graphics and photos unique to this edition
- Hardcover, 315 pages

JEFF BERRY

KX. Sippin' Safari **BOK-SIPP-BBB**

BULU BARWARE

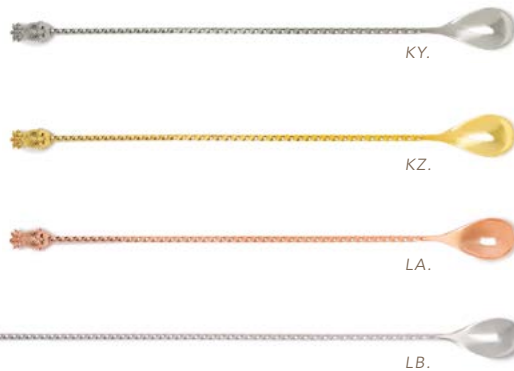
With equal parts rockabilly and rum enthusiast - Italian bartender Daniele Dalla Pola is a blinding barrage of passion and panache. Our collaborative line of Bulu™ barware is a celebration of the pineapple and everything it represents in hospitality.



DANIELE DALLA POLLA



Bulu
BARWARE.



BULU™ BARWARE PINEAPPLE BAR SPOON

MATERIAL Stainless Steel
SIZE H 13.2 / 17 in (33.5 / 43.5 cm) x W 1 in (2.5 cm)

LENGTH: 33.5 CM	
KY. Stainless Steel	BSP-PNP33ST
KZ. Gold-Plated	BSP-PNP33G
LA. Copper-Plated	BSP-PNP33C
LENGTH: 43.5 CM	
LB. Stainless Steel	BSP-PNP43ST

BULU™ PINEAPPLE BOWL

MATERIAL Ceramic
SIZE L 12.7 in (30.5 cm) x W 6.7 in (17 cm) x H 3.4 (8.6 cm)

VOLUME: 56 OZ (1.65 L)	
LC. Pineapple Bowl	OTH-BULU-BOWL

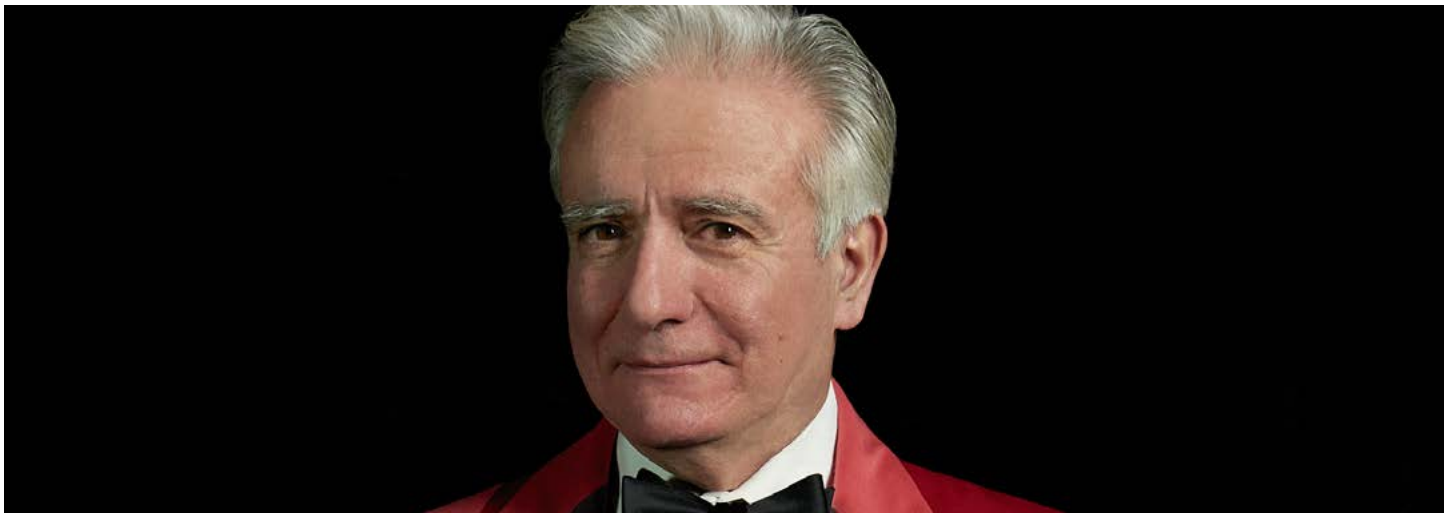


LC.

Bulu
BARWARE.

DALE DEGROFF COLLECTION

Often credited with reigniting the craft cocktail renaissance of the modern era, we are still riding the wave that 'King Cocktail' created during this time at NYC's famed Rainbow Room in the 1980s. With a nod to a time when showmanship was everything, our collaboration with Dale DeGross shows off the theatrical side of bartending.



LD.

DALE DEGROFF COLLECTION SCREENED LADLE

MATERIAL Silver-Plated Stainless Steel/EPNS
SIZE L 12.5 in (31.75 cm) **CUP VOLUME** 2 oz (60 ml)

LD. Café Brûlot Ladle

DGF-LDL-BRU



LE.

LF.

DALE DEGROFF COLLECTION CAFÉ BRÛLOT BOWL AND FORK SET

INCLUDES (1) Copper bowl, with Silver-Plated interior and Brass base plate
(1) Silver-plated fork

SIZE (BOWL) H 8 in (20.3 cm) x D 10.7 in (27 cm)

SIZE (FORK) L 9.2 in (23.4 cm) x W 1.5 in (3.8 cm)

LE. Classic Edition

DGF-SET-BWL-FRK

LF. Special Edition with Dale

DGF-SET-BWL-FRK-SP

GAZ REGAN

Known as much for his cheeky storytelling as he was a bar mentor, the legendary Gary "Gaz" Regan was always the first to make sure we are still having fun. In that respect, our collaboration continues in his work.



LG.

GAZ REGAN NEGRONI FINGER STIRRER

MATERIAL Stainless Steel
SIZE H 13.7 in (35 cm) x W 1 in (2.5 cm)

LENGTH: 35 CM

LG. Negroni Finger Stirrer

BSP-REG35ST



LH.

THE GARY "GAZ" REGAN MUDDLER

MATERIAL Walnut with Brass
SIZE H 9.4 in (23.8 cm) x D 1.8 in (4.5 cm)

LENGTH: 23.8 CM

LH. Gaz Regan Muddler

OTH-REG-MUD

JIM MEEHAN

Known for his pioneering work as a bartender in NYC and as the author of the PDT Cocktail Book, Jim Meehan has been a guiding light for the industry for decades. A real stickler for precision, our collaboration trends toward the pursuit of excellence in all aspects of the bar.



MEEHAN'S MIXOLOGY SPOONS

MATERIAL Stainless Steel

FEATURES Six spoons per set / Attached to a ring for easy toggling / Comes in a reusable tin box.

SIZE L 4.9 in (12.6 cm) x W 1 in (2.6 cm) x H 0.4 in (1 cm)

SPOON VOLUME: ¼ TSP, BARSPOON, ¾ TSP, 1TSP, ½ TBSP, 1 TBSP

L1. Stainless Steel

MHN-OTH-SPNS

JEFFREY MORGENTHALER

With decades of full-time bartending experience, Jeffrey Morgenthaler literally wrote the book on bar technique. He has proven himself a role model for those looking for longevity in the hospitality industry, and our collaboration focuses on classy and utilitarian bar solutions.



MORGENTHALER CHAMPAGNE SABER

MATERIAL Hardened Stainless Steel, Vacuum-Cast

SIZE L 13.8 in (35 cm)

LJ. Stainless Steel

MRG-OTH-SABR



MORGENTHALER TRIOMPHE ATOMIZER

MATERIAL Plastic

SIZE H 5.5in (14 cm) x D 1.45in (3.5cm)

LK. Chrome Color

MRG-ATM-AL

SHANNON MUSTIPHER

With an emphasis on color and design, our collaboration with cocktail and spirits educator Shannon Mustipher brings a modern lens to classic tropical cocktail motifs.



SHANNON MUSTIPHER COCKTAIL STENCILS

MATERIAL Powder Coated Stainless Steel
SIZE L 6 in (15.2 cm) x W 4 in (10 cm)

LL. Stencils, Pack of 3	SMU-OTH-STNC-3
-------------------------	----------------

SHANNON
MUSTIPHER
COLLECTION

SHANNON MUSTIPHER ZOMBIE GLASSES



MATERIAL Glass
SIZE H 6.9 in (17.5 cm) x 2.36 in (5.9 cm)

15 OZ (450 ML)	
LM. Glasses, Set of 2	SMU-GLA-ZMB15-2
Glasses, Case of 24	SMU-GLA-ZMB15-24



SHANNON
MUSTIPHER
COLLECTION

NICO DE SOTO

Globetrotting French bartender Nico de Soto has served cocktails in more countries than most have visited. Our collaboration focuses on sleek, international designs and practicality for a bartender on the move.



LN.

LO.



DE SOTO DOUBLE TEARDROP™ STIRRER

MATERIAL Stainless Steel

SIZE H 13.2 / 17 in (33.5 / 43.5 cm) x W 0.4 in (0.9 cm)

LENGTH: 33.5 CM

LN. Stainless Steel

BSP-SOT33ST

LENGTH: 43.5 CM

LO. Stainless Steel

BSP-SOT43ST



LP.

LQ.

LR.



MIXTIN™ STIRRING TIN

MATERIAL 18/8 Stainless Steel with Brushed Finish

FEATURES Double-Walled and Vacuum Insulated

SIZE H 6 in (15.2 cm) x D 4 in (10.1 cm)

VOLUME: 625 ML (21 OZ)

LP. Banded, Stainless Steel

MXG-MXTN625BND

LQ. Banded, Gold Finish

MXG-MXTN625BND-G

LR. Banded, Gunmetal Finish

MXG-MXTN625BND-GB

LS. Pandan, Stainless Steel

MXG-MXTN625PAN

LT. Sakura, Stainless Steel

MXG-MXTN625SAK



LS.

LT.





DE SOTO PETIT COCKTAIL SHAKER

MATERIAL Stainless Steel
SIZE H 6.1 in (15.6 cm) x D 3.1 in (8.1cm)

VOLUME: 11.8 OZ (350 ML)

LU. Petit Cocktail Shaker

SHA-SOT350ST

ROBERT SIMONSON

Perhaps the most prolific beverage writer of the modern era - an award winning author, freelancer, and New York Times columnist — Robert Simonson has been educating the public about drinks for decades. Our collaboration celebrates the history of the old fashioned cocktail.



ROBERT SIMONSON OLD-FASHIONED SET

INCLUDES (1) Bar spoon, 5 in
 (1) Wood muddler, 5in
 (2) Single old-fashioned glasses (6.5 oz) etched with "Old-Fashioned"



LU. Old-Fashioned Set, 4-Piece

KIT-SIM-OFASH

AUDREY SAUNDERS COLLECTION

A mentor and role model to generations of New York City bartenders, Audrey Saunders has been pivotal in championing the classic cocktail renaissance of the modern era. Our collaboration with her brings a tight focus on the aesthetics of a proper cocktail serve.



SAUNDERS COLLECTION GLASSWARE

MATERIAL Glass

SIZE (TOT GLASS) H 3.2 in (8.1 cm) x D 2.8 in (7.1 cm)

SIZE (SOUR GLASS) H 6 in (15.2 cm) x D 3.2 in (8.1 cm)



TOT GLASS 4 OZ (118 ML)

LW. Schooner Edition, Set of 4	SAU-GLA-TOT-4-ENG
Schooner Edition, Set of 16	SAU-GLA-TOT-16-ENG

SOUR GLASS 7 OZ (221 ML)

LX. 6 Pack	SAU-GLA-SG7-6
Case of 24	SAU-GLA-SG7-24



LW.



LX.

SAUNDERS COLLECTION DIVIDEND CARAFE & BOWL SET

MATERIAL Hand-Blown Glass

INCLUDES (1) Dividend Service Bowl

(1) Dividend Service Carafe

SIZE (CARAFE) L 3.7 in (9.5 cm) x W 3.5 in (9 cm) x H 3.5 in (9 cm)

SIZE (BOWL) H 2.3 in (5.8 cm) x D 3.5 in (8.9 cm)

VOLUME: 4 OZ (118 ML)

LY. Dividend Set	SAU-SET-SIDE
------------------	--------------



LY.



DAVID WONDRICH CLASSIC COLLECTION

Widely hailed as the world's foremost cocktail historian, author David Wondrich has spent decades studying the hazy history of alcoholic beverages. Our Classic Collection represents his collaboration with Cocktail Kingdom's own Greg Boehm - curator of the largest known antique cocktail book and bar tool collections in the world. The products below pull inspiration from the beauty of an antique tool, while tweaking ergonomics for the modern bartender.



LZ.



DAVID WONDRICH JIM GRAY™ BAR SPOON

MATERIAL Stainless Steel with Silver-Plated EPNS finish
SIZE H 13 in (33 cm) x W 1.2 in (3 cm)

LENGTH: 33 CM

LZ. Silver-Plated EPNS

WON-BSP-JG33SV



MA.



2-PIECE SET

DAVID WONDRICH SHAKERS

MATERIAL Silver-Plated EPNS
SIZE (COLEY™) H 10.2 in (26 cm) x D 3.4 in (.6 cm)
SIZE (VOLNEY™) H 9.4 in (24 cm) x D 3.7 in (9.5 cm)

VOLUME: 18 OZ (532 ML)

MA. Coley™ Shaker

WON-SHA-COL520



MB.



2-PIECE SET

VOLUME: 24 OZ (709 ML)

MB. Volney™ Shaker

WON-SHA-VOL715



DAVID WONDRICH LINDLEY-PICK HAWTHORNE STRAINER

MATERIAL Stainless Steel with Silver-Plated EPNS finish
SIZE H 6 in (15.2 cm) x W 3.25 in (8.2 cm)

LENGTH: 33.5 CM

MC. Silver-Plated EPNS

WON-STR-LP



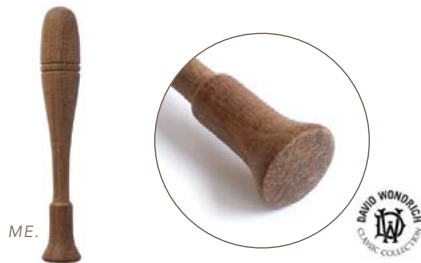
DAVID WONDRICH BERRY WALL™ FOOTED MIXING GLASS

MATERIAL Crystal, Lead-Free
SIZE H 7.8 in (19.7 cm) x D 3.7 in (9.3 cm)

VOLUME: 500 ML (17 OZ)

MD. Berry Wall™ Footed Mixing Glass, Clear

WON-MXG-500BW-CLR



DAVID WONDRICH CATO™ MUDDLER

MATERIAL Natural Hardwood (Non-Treated, Non-Varnished)
SIZE L 7.5 in (19 cm) x D 1.1 in (2.8 cm)

ME. Muddler

WON-MUD-CATO



DAVID WONDRICH ASHLEY NUTMEG GRATER

MATERIAL Silver-Plated EPNS
SIZE H 2.7 in (7 cm) x D 1.8 in (4.8 cm)

MF. Silver-Plated EPNS

WON-OTH-NTMG



DAVID WONDRICH BLUE BLAZER MUGS

MATERIAL Silver-Plated Brass
SIZE H 5.1 in (13 cm) x D 3.3 in (8.3 cm) (without handle)

VOLUME: 19 OZ (575 ML)

MG. Set of 2

WON-GLA-BLZR-2



MH.



DAVID WONDRICH CORDIAL GLASSES

MATERIAL Glass

SIZE H 5.25 in (13.3 cm) x D 2.5 in (6.3 cm)

VOLUME: 3 OZ (90 ML)

MH. 4 Pack

WON-GLA-GRG03-4

Case of 24

WON-GLA-GRG03-24



MI.



DAVID WONDRICH O'DOHERTY TODDY LIFTER

MATERIAL Glass

SIZE H 6 in (15.2 cm) x D 2 in (5 cm)

VOLUME: 2 OZ (59 ML)

MI. Toddy Lifter

WON-OTH-TOD



MJ.



DAVID WONDRICH PUNCH BOWL

MATERIAL White Stoneware

SIZE H 4.5 in (11.4 cm) x D 11 in (28 cm)

VOLUME: 1 GALLON (3.79 L)

MJ. Punch Bowl

WON-PUNC01



MK.



DAVID WONDRICH STIRRED SELECTION

INCLUDES (1) Clear Berry Wall™ Footed Mixing Glass

(1) Jim Gray™ Barspoon

(1) Hauck™ Julep Strainer

MK. Stirred Selection, 3 Piece Set

KIT-WON-STIR

LIBRARY

The Cocktail Kingdom Research Library houses the largest known collection of antique beverage books and tools in the world—stacks of artifacts dating back to the 1600s. From this collection is where we draw inspiration for the barware that has helped define the modern era of cocktails. Occasionally, we create facsimiles of standout titles from this collection.



THOMAS
of
the
of the season
carry 1st



ML.

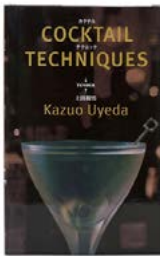
AMERICAN BAR

FRANK P. NEWMAN

ML. American Bar

BOK-VIN-NEW-AM

- Originally published in 1904
- Entirety of book is in French, with the introduction written in English and French
- Introduction by Fernando Castellon
- Hardcover, 111 pages



MM.

COCKTAIL TECHNIQUES

KAZUO UYEDA

MM. Cocktail Techniques

BOK-TECH-UYE

- Gives a great glimpse into classic Japanese bartending
- First English edition
- Seminal work by internationally renowned Kazuo Uyeda



MN.

THE FINE ART OF MIXING DRINKS

DAVID A. EMBURY

MN. The Fine Art of Mixing Drinks

BOK-VIN-FIN-EMB

- First cocktail book ever published
- Reproduction of 1862 edition, with new introduction and appendix by David Wondrich
- Hardcover, 272 pages



MO.

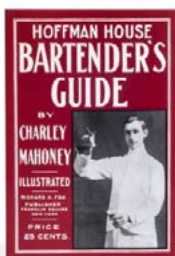
HARRY JOHNSON'S BARTENDERS' MANUAL

HARRY JOHNSON

MO. Bartenders' Manual

BOK-VIN-JOH-HAR

- Mindset of late 1800s bartenders with a great collection of recipes and tips on techniques
- Reproduction of 1900 edition with new introduction by Robert Hess
- Paperback, 288 pages



MP.

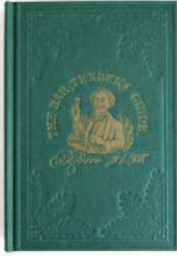
HOFFMAN HOUSE BARTENDER'S GUIDE

CHARLEY MAHONEY

MP. Hoffman House Bartender's Guide

BOK-VIN-MAH-HOF

- The bartender's guide from the famous Hoffman House hotel in New York City
- Reproduction of 1912 edition with new introduction by noted bartender Jim Meehan
- Paperback, 264 pages



MQ.

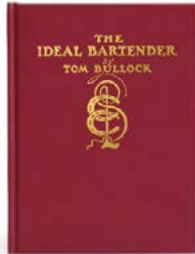
HOW TO MIX DRINKS: A BON VIVANT'S COMPANION

JERRY THOMAS

MQ. How to Mix Drinks

BOK-VIN-BON-JT

- First cocktail book ever published
- Reproduction of 1862 edition, with new introduction and appendix by David Wondrich
- Hardcover, 272 pages



MR.

THE IDEAL BARTENDER

TOM BULLOCK

MR. The Ideal Bartender

BOK-VIN-IDE-BUL

- First cocktail book published by an African-American author
- Introduction by noted rum authority Ian Burrell
- Originally published in 1917
- Hardcover, 53 pages



MS.

LOUIS' MIXED DRINKS

LOUIS MUCKENSTRUM

MS. Louis' Mixed Drinks

BOK-VIN-LOU-MUC

- Originally published in 1906
- New introduction by Phil Duff
- Hardcover, 113 pages



MT.

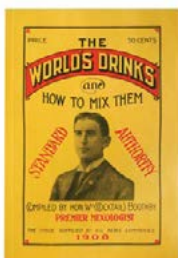
THE SOUTH AMERICAN GENTLEMAN'S COMPANION

CHARLES H. BAKER, JR.

MT. The South American Gentleman's Companion

BOK-VIN-SOU-BAK

- An adventurous guide to cocktails and a great read; the famous exotic drinking book
- Originally published in 1951, with introduction by St. John Frizell
- Hardcover with slip case, 224 pages



MU.

THE WORLD'S DRINKS AND HOW TO MIX THEM

WILLIAM BOOTHBY

MU. The World's Drinks and How to Mix Them

BOK-VIN-WOR-BOO

- Reproduction of the 1884 edition
- New introduction by Brian Rea
- Hardcover, 128 pages



ITEMS SHOWN ARE NOT TO SCALE

STAINLESS STEEL COLLECTION

- MV. SET OF LEOPOLD® WEIGHTED SHAKING TINS**
KIT-SHA-LEO-ST
- MW. JAPANESE STYLE JIGGER, 20/40 ML**
JIG-JAP2040ST
- MX. KORIKO® HAWTHORNE STRAINER**
STR-KOR-STL
- MY. CHURCH KEY**
OTH-CHKY-ST
- MZ. SKULL BAR Spoon**
BSP-SKL33ST
- NA. LEOPOLD® BAR Spoon, 36 CM**
BSP-LEO36ST
- NB. DE SOTO DOUBLE TEARDROP™ STIRRER, 43 CM**
BSP-SOT43ST
- NC. DE SOTO DOUBLE TEARDROP™ STIRRER, 33 CM**
BSP-SOT33ST
- ND. JAPANESE STYLE JIGGER, 1 OZ / 2 OZ**
JIG-JAP0102ST
- NE. DE SOTO PETIT COCKTAIL SHAKER**
SHA-SOT350ST
- NF. HEAVYWEIGHT KORIKO® JIGGER, 1 OZ / 2 OZ**
JIG-HKOR-0102ST
- NG. JAPANESE STYLE JIGGER, 25ML / 50 ML**
JIG-JAP2550ST
- NH. BULU™ PINEAPPLE BAR Spoon, 33 CM**
BSP-PNP33ST
- NI. BULU™ PINEAPPLE BAR Spoon, 43 CM**
BSP-PNP43ST
- NJ. GAZ REGAN NEGRONI FINGER STIRRER, 35 CM**
BSP-REG35ST
- NK. KORIKO® 2-PRONG HAWTHORNE STRAINER**
STR-KOR2PR-STL
- NL. GARNISH TONGS**
OTH-GRTNG-ST
- NM. MEEHAN'S MIXOLOGY SPOONS**
MHN-OTH-SPNS
- NN. BROMLEY™ BAR Spoon, 36 CM**
BSP-BROM36-ST
- NO. STEPPED JIGGER**
RES-JIG01ST
- NP. BROMLEY™ COCKTAIL PICK**
OTH-PICK-BROM12ST
- NQ. STEPPED JIGGER (NO HANDLE)**
RES-JIG02ST
- NR. SWIZZLE CUP**
BBB-GLA-SWZ14
- NS. ANTIQUE-STYLE HAWTHORNE STRAINER**
STR-ANTQ-ST
- NT. LEOPOLD® JIGGER, 1 OZ / 2 OZ**
JIG-LEO-0102ST
- NU. LEOPOLD® JIGGER BANDED, 1 OZ / 2 OZ**
JIG-LEOB-0102ST
- NV. LARGE ANTIQUE-STYLE HAWTHORNE STRAINER**
STR-LANTQ-ST
- NW. BEACHBUM BERRY'S NAVY GROG CONE KIT**
BBB-NVYGR-ST
- NX. MUDDLER BAR Spoon, 30 CM**
BSP-MUD30ST
- NY. MUDDLER BAR Spoon, 40 CM**
BSP-MUD40ST
- NZ. BUSWELL CAST METAL PEELER**
OTH-BUSPLR-ST
- OA. THREADED BITTERS BOTTLE**
BTB-RDD100SV
- OB. LEOPOLD® JIGGER, 25/50 ML**
JIG-LEO-2550ST
- OC. COCKTAIL PICKS**
OTH-PICK12ST
- OD. LEOPOLD® JIGGER BANDED, 25/50 ML**
JIG-LEOB-2550ST
- OE. BITTERS BOTTLE**
BTB-RCD100ST
- OF. COCO™ STRAINER PREMIUM MESH CONE**
STR-COCO-ST
- OG. HOFFMAN® BAR Spoon, 33 CM**
BSP-HOF33ST
- OH. HOFFMAN® BAR Spoon, 43 CM**
BSP-HOF43ST
- OI. DASHDART®**
BTB-DD2PK-SV
- OJ. STEEL STRAW**
STRW-05ST24
- OK. PREMIUM JULEP STRAINER, MIRROR FINISH**
STR-JUL-MIR
- OL. SET OF KORIKO® WEIGHTED SHAKING TINS**
KIT-SHA-KOR-ST
- OM. PREMIUM JULEP STRAINER, MATTE FINISH**
STR-JUL-MAT
- ON. DASHDART®**
BTB-DD2PK-SV
- OO. WIDE-MOUTH SPEED POURER**
OTH-SPDPR4ST
- OP. MIXTIN™ STIRRING TIN, BANDED**
MXG-MXTN625BND
- OQ. USAGI™ HEAVYWEIGHT COBBLER SHAKER**
SHA-USG500ST-MIR
- OR. BUSWELL® 4-PRONG HAWTHORNE STRAINER**
STR-BUS4PR-ST
- OS. JULEP CUP**
GLA-JUL12ST-MIR
- OT. MIXTIN™ STIRRING TIN, SAKURA**
MXG-MXTN625SAK
- OU. SPEED POURER**
OTH-SPDPR6ST

PLEASE NOTE: ITEMS SHOWN ARE NOT TO SCALE



GOLD COLLECTION

ITEMS SHOWN ARE NOT TO SCALE

GOLD COLLECTION

- OV. GARNISH TONGS**
OTH-GRTNG-G
- OW. KORIKO® SMALL WEIGHTED SHAKING TIN**
SHA-KOR18G
- OX. DASHDART®**
BTB-DD2PK-G
- OY. THREADED BITTERS BOTTLE**
BTB-RDD100G
- OZ. DASHER TOP**
BTB-CD3PK-G
- PA. 70MM ICE BALL MAKER**
ICE-70IBM-G
- PB. BEVELED BITTERS BOTTLE**
BTB-BCD100G
- PC. TEARDROP™ BARSPOON, 30 CM**
BSP-TD30G
- PD. DANUTA™ DOUBLE ROCKS GLASS**
GLA-DANRCK15G-4
- PE. LEOPOLD™ SMALL WEIGHTED SHAKING TIN**
SHA-LEO18G
- PF. SET OF LEOPOLD® WEIGHTED SHAKING TINS**
KIT-SHA-LEO-G
- PG. JAPANESE STYLE JIGGER, ½ / ¾ OZ**
JIG-JAP1234G
- PH. LARGE ANTIQUE-STYLE HAWTHORNE STRAINER**
STR-LANTQ-G
- PI. BROMLEY™ COCKTAIL PICK**
OTH-PICK-BROM12G
- PJ. ANTIQUE-STYLE HAWTHORNE STRAINER**
STR-ANTQ-G
- PK. JAPANESE STYLE JIGGER, 1 OZ / 2 OZ**
JIG-JAP0102G
- PL. SET OF KORIKO® WEIGHTED SHAKING TINS**
KIT-SHA-KOR-G
- PM. KORIKO® HAWTHORNE STRAINER**
STR-KOR-G
- PN. COCO™ STRAINER PREMIUM MESH CONE**
STR-COCO-G
- PO. LEOPOLD® JIGGER, 1 OZ / 2 OZ**
JIG-LEO-0102G
- PP. LEOPOLD® JIGGER, BANDED, 1 OZ / 2 OZ**
JIG-LEOB-0102G
- PQ. NICK AND NORA GLASS**
GLA-NCK5G-6
- PR. PREMIUM JULEP STRAINER**
STR-JUL-G
- PS. TEARDROP™ BARSPOON, 40 CM**
BSP-TD40G
- PT. CHURCH KEY**
OTH-CHKY-G
- PU. SKULL BARSPOON, 33 CM**
BSP-SKL33G
- PV. HOFFMAN® BARSPOON, 33 CM**
BSP-HOF33G
- PW. COCKTAIL PICKS**
OTH-PICK12G
- PX. MIXTIN™ STIRRING TIN, BANDED**
MXG-MXTN625BND-G
- PY. BROMLEY™ BARSPOON, 36 CM**
BSP-BROM36-G
- PZ. BULU™ PINEAPPLE BARSPOON**
BSP-PNP33G
- QA. BUSWELL CAST METAL PEELER**
OTH-BUSPLR-G
- QB. LEOPOLD® BARSPOON, 36 CM**
BSP-LEO36G
- QC. JULEP CUP**
GLA-JUL12ST-G
- QD. KORIKO® LARGE WEIGHTED SHAKING TIN**
SHA-KOR28G
- QE. BUSWELL® 4-PRONG HAWTHORNE STRAINER**
STR-BUS4PR-G
- QF. USAGI™ HEAVYWEIGHT COBBLER SHAKER**
SHA-USG500G
- QG. TALON TONGS**
OTH-TLNTNG-G
- QH. KORIKO® 2-PRONG HAWTHORNE STRAINER**
STR-KOR2PR-G
- QI. 55MM ICE BALL MAKER**
ICE-55IBM-G
- QJ. LEOPOLD™ LARGE WEIGHTED SHAKING TIN**
SHA-LEO28G

PLEASE NOTE: ITEMS SHOWN ARE NOT TO SCALE



COPPER COLLECTION

ITEMS SHOWN ARE NOT TO SCALE

COPPER COLLECTION

- QK. DASHER TOP**
BTB-CD3PK-C
- QL. BITTERS BOTTLE, 50 ML**
BTB-RCD50C
- QM. GARNISH TONGS**
OTH-GRTNG-C
- QN. TEARDROP™ BARSPOON, 30 CM**
BSP-TD30C
- QO. TEARDROP™ BARSPOON, 40 CM**
BSP-TD40C
- QP. BULU™ PINEAPPLE BARSPOON, 33 CM**
BSP-PNP33C
- QQ. TALON TONGS**
OTH-TLNTNG-C
- QR. DASHER TOP**
BTB-CD3PK-C
- QS. BEVELED BITTERS BOTTLE, 50 ML**
BTB-BCD50C
- QT. USAGI™ HEAVYWEIGHT COBBLER SHAKER**
SHA-USG500C
- QU. MINI MULE SHOTS**
GLA-MUL05C-16
- QV. JULEP CUP**
GLA-JUL12ST-C
- QW. LEOPOLD™ SMALL WEIGHTED SHAKING TIN**
SHA-LEO18C
- QX. PREMIUM JULEP STRAINER**
STR-JUL-C
- QY. MOSCOW MULE MUG**
GLA-MUL12C
- QZ. SKULL BARSPOON, 33 CM**
BSP-SKL33C
- RA. BROMLEY™ BARSPOON, 36 CM**
BSP-BROM36-C
- RB. JAPANESE STYLE JIGGER, 1 OZ / 2 OZ**
JIG-JAP0102C
- RC. BROMLEY™ COCKTAIL PICK**
OTH-PICK-BROM12C
- RD. JAPANESE STYLE JIGGER, ½ / ¾ OZ**
JIG-JAP1234C
- RE. HOFFMAN® BARSPOON, 33 CM**
BSP-HOF33C
- RF. LEOPOLD® BARSPOON, 36 CM**
BSP-LEO36C
- RG. KORIKO® HAWTHORNE STRAINER**
STR-KOR-C
- RH. KORIKO® SMALL WEIGHTED SHAKING TIN**
SHA-KOR18C
- RI. STEPPED JIGGER**
RES-JIG01C
- RJ. BEVELED BITTERS BOTTLE**
BTB-BCD100C
- RK. SET OF LEOPOLD® WEIGHTED SHAKING TINS**
KIT-SHA-LEO-C
- RL. CHURCH KEY**
OTH-CHKY-C
- RM. LEOPOLD® JIGGER**
JIG-LEO-0102C
- RN. COCKTAIL PICKS**
OTH-PICK12C
- RO. LEOPOLD® JIGGER, BANDED, 1 OZ / 2 OZ**
JIG-LEOB-0102C
- RP. COCO™ STRAINER PREMIUM MESH CONE**
STR-COCO-C
- RQ. SET OF KORIKO® WEIGHTED SHAKING TINS**
KIT-SHA-KOR-C
- RR. THREADED BITTERS BOTTLE**
BTB-RDD100C
- RS. BUSWELL® 4-PRONG HAWTHORNE STRAINER**
STR-BUS4PR-C
- RT. WIDE-MOUTH SPEED POURER**
OTH-SPDPR3C
- RU. ANTIQUE-STYLE HAWTHORNE STRAINER**
STR-ANTQ-C
- RV. BUSWELL CAST METAL PEELER**
OTH-BUSPLR-C
- RW. LARGE ANTIQUE-STYLE HAWTHORNE STRAINER**
STR-LANTQ-C
- RX. SPEED POURER**
OTH-SPDPR4C
- RY. KORIKO® 2-PRONG HAWTHORNE STRAINER**
STR-KOR2PR-C
- RZ. CAFÉ BRÛLOT BOWL AND FORK SET**
DGF-SET-BWL-FRK
- SA. BUSWELL CAST METAL PEELER**
OTH-BUSPLR-C
- SB. DASHDART®**
BTB-DD2PK-C
- SC. 55MM ICE BALL MAKER**
ICE-55IBM-C
- SD. DASHDART®**
BTB-DD2PK-C
- SE. CAFÉ BRÛLOT BOWL AND FORK SET
SPECIAL EDITION WITH DALE STATUETTES**
DGF-SET-BWL-FRK-SP
- SF. KORIKO® LARGE WEIGHTED SHAKING TIN**
SHA-KOR28C

PLEASE NOTE: ITEMS SHOWN ARE NOT TO SCALE



GUNMETAL BLACK COLLECTION

ITEMS SHOWN ARE NOT TO SCALE

GUNMETAL BLACK COLLECTION

- SG. TEARDROP™ BAR spoon, 40 CM**
BSP-TD40GB
- SH. JAPANESE STYLE JIGGERS, ½ / ¾ OZ**
JIG-JAP1234GB
- SI. SET OF LEOPOLD® WEIGHTED SHAKING TINS**
KIT-SHA-LEO-GB
- SJ. KORIKO® HAWTHORNE STRAINER**
STR-KOR-GB
- SK. TRIDENT BAR spoon, 40 CM**
BSP-TRI40GB
- SL. MIXTIN™ STIRRING TIN, BANDED**
MXG-MXTN625BND-GB
- SM. JULEP CUP**
GLA-JUL12ST-GB
- SN. HOFFMAN® BAR spoon, 43.5 CM**
BSP-HOF43GB
- SO. JAPANESE STYLE JIGGERS, 1 OZ / 2 OZ**
JIG-JAP0102GB
- SP. SET OF KORIKO® WEIGHTED SHAKING TINS**
KIT-SHA-KOR-GB
- SQ. KORIKO® 2-PRONG HAWTHORNE STRAINER**
STR-KOR2PR-GB
- SR. LEOPOLD® JIGGER, BANDED, 1 OZ / 2 OZ**
JIG-LEOB-0102GB
- SS. BUSWELL® 4-PRONG HAWTHORNE STRAINER**
STR-BUS4PR-GB
- ST. LEOPOLD® JIGGER, 1 OZ / 2 OZ**
JIG-LEO-0102GB
- SU. TEARDROP™ BAR spoon, 30 CM**
BSP-TD30GB
- SV. COCO™ STRAINER PREMIUM MESH CONE**
STR-COCO-GB
- SW. GARNISH TONGS**
OTH-GRTNG-GB
- SX. DASHDART®**
BTB-DD2PK-B
- SY. SKULL BAR spoon, 33 CM**
BSP-SKL33GB
- SZ. PREMIUM JULEP STRAINER**
STR-JUL-GB
- TA. BROMLEY™ BAR spoon, 36 CM**
BSP-BROM36-GB

PLEASE NOTE: ITEMS SHOWN ARE NOT TO SCALE

GET IN TOUCH



SHOWROOM

31 West 8th Street, Second Floor
New York, New York 10011

HOURS: Monday - Friday 10:30am - 5:00pm (EST)

CONTACT US

31 West 8th Street, Second Floor
New York, New York 10011

GENERAL INQUIRIES	+1 (212) 647-9166(EST) info@cocktailkingdom.com
PRESS INQUIRIES	press@cocktailkingdom.com
SALES INQUIRIES	sales@cocktailkingdom.com

FOLLOW US

 [@cocktailkingdom](https://www.instagram.com/cocktailkingdom)

 [@cocktailkingdom](https://www.youtube.com/cocktailkingdom)

LIBRARY

GENERAL INQUIRIES library@cocktailkingdom.com
[VIRTUAL LIBRARY](#)

CHEERS!