



BASEBOARD PRO

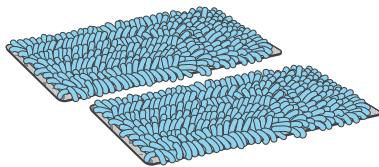
MUCHO MOP

Congrats! Your days of scrubbing baseboards on your hands and knees end today!

Intro & Inventory

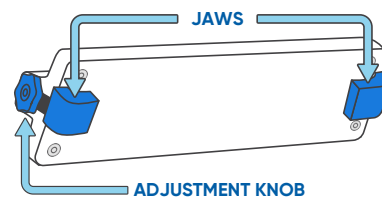
You deserve to deep clean baseboards while standing with dignity, so we're going to show you how! Here's everything you need to clean baseboards faster and easier than ever before.

Your baseboard mop system includes:



2X 10" CHENILLE MUCHO MOP PADS

The 100% microfiber fingers of the Mucho Mop pad dig deep into uneven surfaces, giving you hand scrubbed results, with light mopping effort. These multitasking pads clean everything from intricate baseboard molding to tile grout and even air vents. Designed to dry dust or wet clean and last for hundreds of washes.



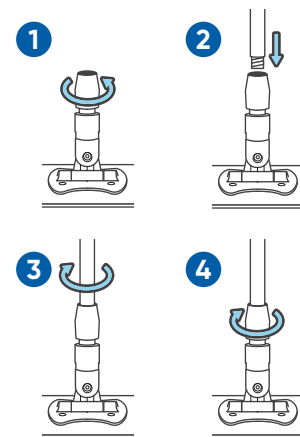
1X BASEBOARD SLIDER

Commercial-grade hardware designed for years of daily use. The baseboard slider grips to your mop frame with adjustable jaws that hold on tight. Twist the knob to quickly loosen and adjust to any baseboard height. Simply place the mop pad over the frame and slider, rest the slider on top of the baseboard, and glide!

Mop & Pole Assembly

ATTACHING THE POLE TO THE MOP FRAME:

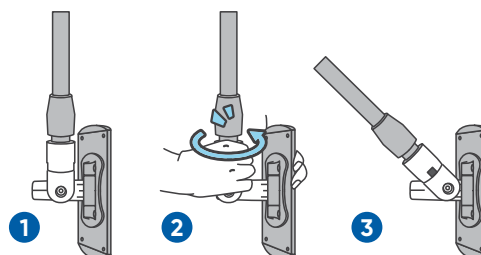
1. Loosen the compression ring at top of the frame.
2. Push the threaded end of the pole into the top of the loosened frame until it seats into the threading deep inside.
3. Screw the pole into the threading until it's tight.
4. Finally, tighten the compression ring onto the pole. This will ensure the pole won't come loose while you clean.



Swivel Lock & Slider Adjustment

SWIVEL LOCK

The Swivel Lock holds the mop frame in multiple positions to increase the ergonomics of different cleaning tasks. For baseboard cleaning, the mop frame should be locked at a 45° angle, so the cleaner can stand straight as they work.



To lock the swivel at 45°:

Hold the pole and rotate the mop frame until the swivel arm sticks out sideways.

1. Twist the Swivel Lock a quarter turn until it clicks, blocking the arm from rotating back.
2. To unlock, simply twist the lock an additional quarter.

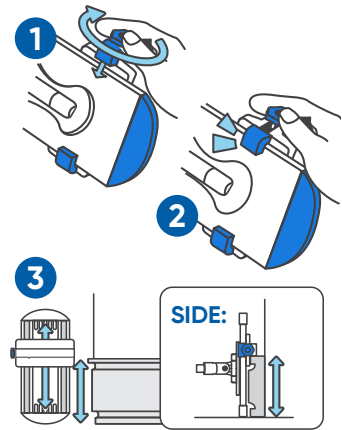
SLIDER ADJUSTMENT:

The slider is designed to “ride the rail”, gliding along the top of the baseboard. To attach the slider to your mop frame:

Loosen the knob and guide the slider onto the mop frame, with the bottom of the slider and frame pressed together. Loosely retighten the knob.

To adjust the slider to match the height of your baseboard, loosen the knob, move the slider up or down, and then retighten.

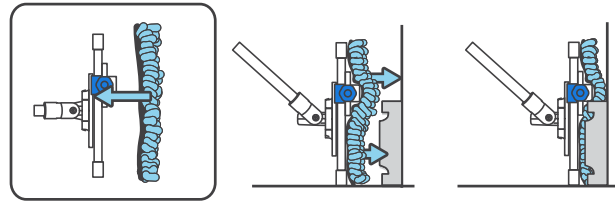
NOTE: It is OK for the slider not to match baseboards perfectly, so long as the Baseboard Pro can rest on top of the baseboard without the edge of the mop frame digging into the floor.



Mucho Mop Pad & Usage Instructions

The Mucho Mop Pad is designed to dry dust or wet clean. To attach the pad to the mop frame, place the back of the pad onto the bottom side of the mop frame, covering the slider. Let the excess pad wrap under the frame when cleaning hard floors to protect against scratching)

If wet cleaning, first dampen the pad with warm water or your favorite cleaning solution, wring it out thoroughly, and then attach.



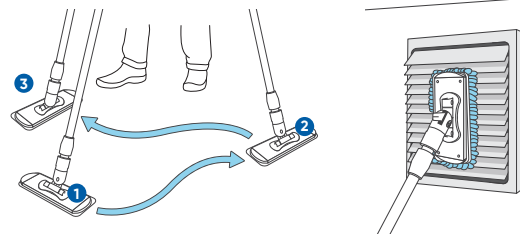
To clean baseboards, simply rest the slider on the top of the baseboard and glide the mop frame along the board using the mop pole. Be sure to stand up straight to reduce back strain. The frame can also be gently scrubbed back and forth to loosen stubborn soils.

Mucho Mop Multi Use Cleaning Instructions

The Baseboard Pro Mucho Mop can also be used without the baseboard slider to clean floors, walls, and air vents.

To clean floors: Start in the far corner of the space you want to get clean. When mopping, walk backwards through the space. Work the mop from side to side while keeping the leading edge of the mop in front. This will prevent dirt and debris from being left behind. When the mop pad dries out or becomes saturated with dirt, replace it with a clean one or rinse it out.

To clean air vents and walls: Turn the Swivel Lock a quarter turn to lock the swivel arm straight and keep the frame from wiggling side to side. Use the pole to raise the frame and rub it back and forth against the wall or air vent to loosen dust and debris. Dampen the pad with warm water or your favorite cleaning solution and then wring it out thoroughly if deeper cleaning is required.



Care Instructions

Caring for your microfiber mop is easy. Microfiber can last for years when cared for properly. **Follow these four simple guidelines and your mops pad will be effective for years to come!**

WASH:

- Never use fabric softener. Use bleach sparingly, only when necessary
- Wash in cold to warm water (160°F max).
- Set the washing machine to a warm, permanent press or synthetic fabric setting.
- Ideally wash only with microfiber or other non-linting synthetic fabrics like polyester.

DRY:

- Never wash or dry in high heat. It shrinks & melts the fibers.
- Dry with no heat, low heat, or warm (140°F max).
- Set the dryer to a warm, permanent press or synthetic fabric setting.
- Use plastic dryer balls to knock out hairs and lint.
- To air dry, hang the pad by the loop of ribbon on the back of the pad.
- Sanitize Microfiber: Dry at 135° for 1 hour minimum to kill germs.

HAPPY? :-)

Share your shine!

Write a review on Amazon, it's easy:

1. Login to Amazon
2. Click on 'Orders'
3. Select 'Write a product review'

NOT HAPPY? :-)

Contact us!

We want 100% of our customers to be happy.

Phone: 877-791-6677

Email: service@microfiberwholesale.com

Register your product here for information on our one year unconditional warranty:

www.microfiberwholesale.com/register-my-product