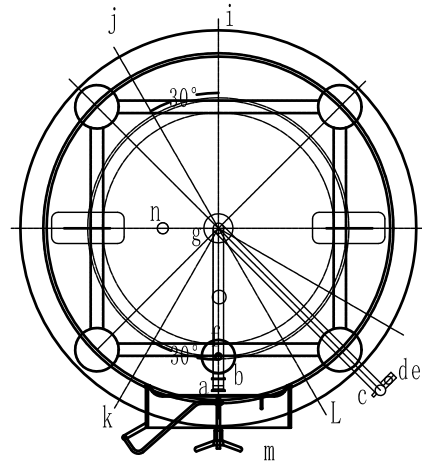
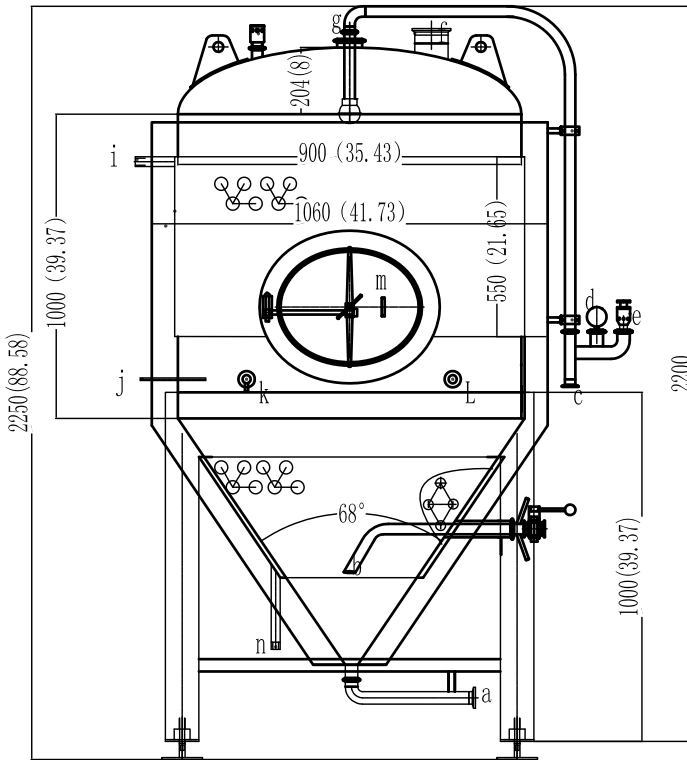


# 5BBL FERMENTER



Symbol	Nominal size	Connection mode	Use
a	ø1.5"	Clamp	Drainage port
b	ø2"	Clamp	Racking arm port
c	ø1.5"	Clamp	CIP outlet
d	ø1.5"		Pressure gauge connection port
e	ø1.5"		PRV connectoin port
f	ø4"	Clamp	Dry hops port
g	ø4"	Clamp	CIP connection port
h			
i	1 NPT	Thread	Gylcol outlet
j	1/2NPT		Temperature thermowell
k	ø1.5"	Clamp	Sampling port
L	ø1.5"	Clamp	Carbonation port
m	22.8"×18.9"		Manhole door
n	1 NPT	Thread	Gylcol inlet

## Productoin requirement

1. Effective volume: 7BBL
2. Construction SUS 304 food grade stainless steel, all pipes are sus304
3. Tank will be tested and detected in the NDT room after finished, to ensure no leakage.
4. Steam jackets will do water pressure testing, testing pressure: 0.4Mpa;
5. All tanks will be pressure protection 48hours before leaving from factory;
6. TIG full welding by water to ensure uniform and long life, and acid pickled and passivated. stainless steel 308L welding wire
8. All tanks are mirror polishing inside, all ports are recessed type.

## Brewhouse Solutions LLC

5BBL FV tank
