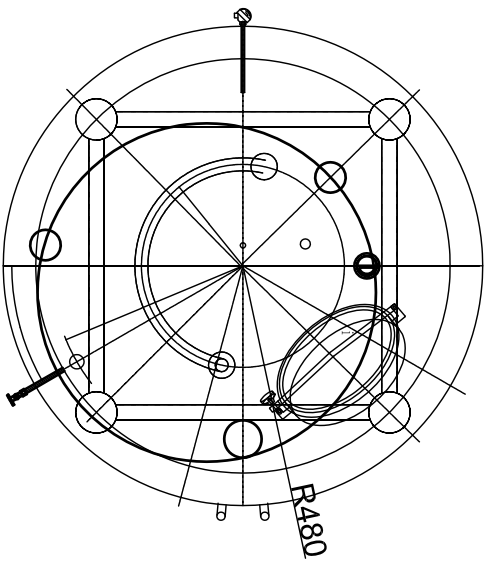
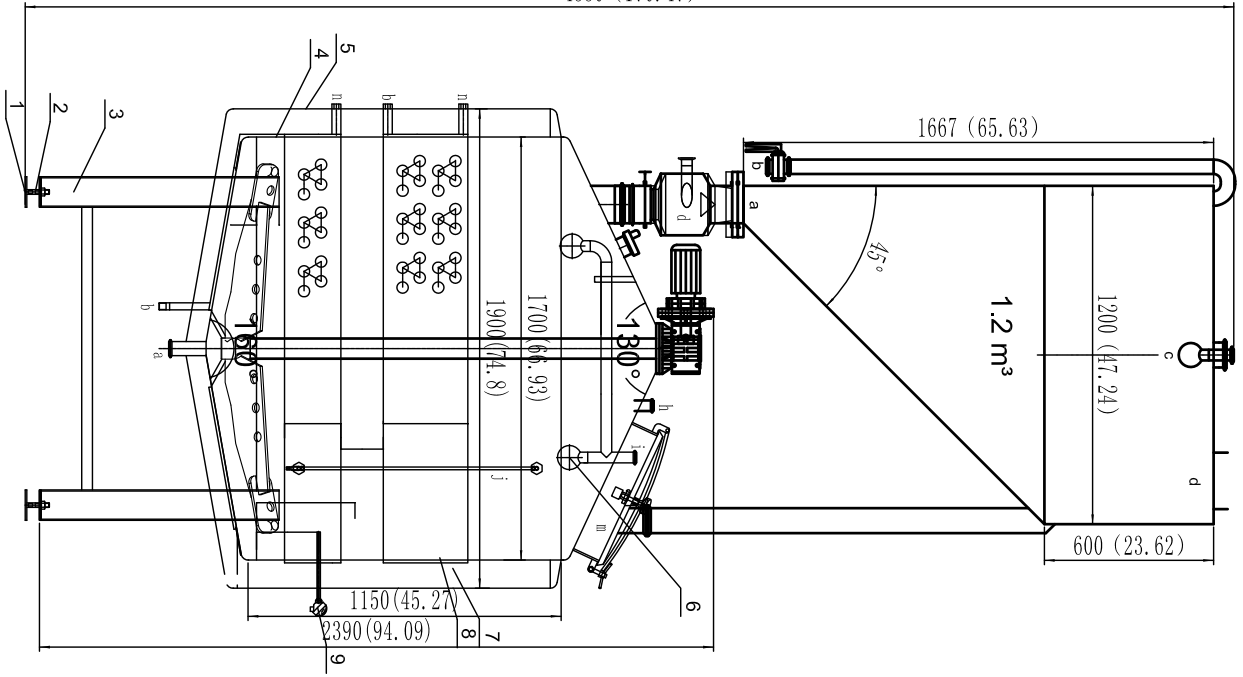


4330 (170.47)



Claim

1. Effective volume: 20BBL
2. Conical head, internal and external polishing accuracy, polishing degree $\leq 0.4\mu\text{m}$.
3. argon arc welding process, 304 plate, stainless steel 308L welding wire, full welding
4. After completion, test leak test pressure, jacket pressure 0.4Mpa

Orifice table

Symbol	Nominal size	Connection mode	Use
a	φ1	Clamp	
b	G1	Thread	Steam outlet
c	NP20-φ12.7	Thread	Temperature
d	φ108		Preheating inlet
e			
f			
g			
h	1.5(φ38)	Clamp	Add water inlet
i	1.5(φ38)	Clamp	Washing port
j	φ38		Level gauge
k			
m	φ450		Manhole door
n	G1	Thread	Steam inlet

9	Thermometer blind tube φ12.7 L=50	1	06GCr18Ni10				
8	Tube steam jacket 11.5	1	06GCr18Ni10				
7	Insulation Materials	1	06GCr18Ni10				
6	Cleaning ball φ38	2	06GCr18Ni10				
5	Outer tank 12	1	06GCr18Ni10				
4	Inner tank 13	1	06GCr18Ni10				
3	Supporting leg φ108×3	4	06GCr18Ni10				
2	Adjusting bolt φ20×80	4	06GCr18Ni10				
1	Foot gasket 110φ6	4	06GCr18Ni10				
No. Code number	Name	Quantity	Material	Single weight	Total weight	Note	

20BBL Mash tank

Design	Stage	remark	Wight	scale
Check				
Audit				
Approve				
Total page				