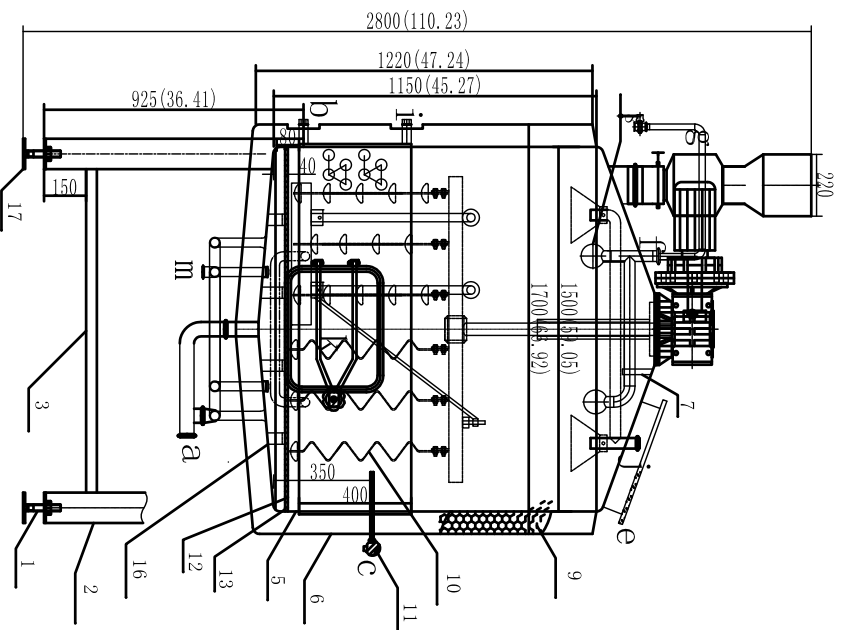


# Mash/lauter tank

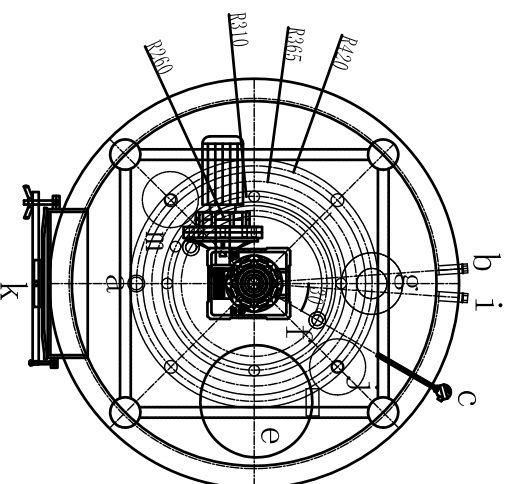


Orifice table

Symbol	Nominal size	Connection mode	Use
a	Ø51	Clamp	Wort outlet
b	Ø38	Thread	Steam outlet
c	NP120		Temperature thermowell
d	Ø400		Manhole door
e	Ø38	Clamp	CIP inlet
f	Ø133	Clamp	Crust hydrator
g	Ø38	Thread	Steam inlet
h	Ø38	Clamp	Recirculation inlet
i	430×530		Grainout door
j	Ø38	Clamp	Backflush port
k	Ø38		
l			
m			

## Production requirement

1. Effective volume: 15BBL;Gross volume: 20BBL
2. Construction SUS 304 food grade stainless steel, all pipes are sus304
3. Tank will be tested and detected in the NDT room after finished, to ensure no leakage.
4. Steam jackets will do water pressure testing, testing pressure: 0.4Mpa;
5. All tanks will be pressure protection 48hours before leaving from factory;
6. TIG full welding by water to ensure uniform and long life stainless steel 308L welding wire
8. All tanks are mirror polishing inside, all ports are recessed type.
9. Total weight: 400kgs



Note:Quantity:1

17	Footpad 110*8	4	06Cr19Ni10	
16	Supporting flat steel 15	6m	06Cr19Ni10	
15		1	06Cr19Ni10	
14	False bottom support 13 width 20	1	06Cr19Ni10	
13	False bottom	1	06Cr19Ni10	
12	Temperature probe NP120-Ø13×1.5L=280	1	06Cr19Ni10	
11	Rake knife	1	06Cr19Ni10	Make scraper plate
10	Insulation Materials	0.22m <sup>3</sup>	Rock wool	
9	Cleaning ball Ø38	2	06Cr19Ni10	
8	Support of spraying pipe 12,width 20	1	06Cr19Ni10	
7	Outer tank 12	1	06Cr19Ni10	
6	Inner tank 13	1	06Cr19Ni10	
5	Leg support Ø38×1.5	4	06Cr19Ni10	
3	Supporting leg Ø133×3	4	06Cr19Ni10	
2	Adjusting bolt M20×80	4	06Cr19Ni10	
No.	Name	Quantity	material	Note

15BBL Mash/lauter tun			
Design	Stage remark	Weight	scale
Check			
Audit			
Approve	Total page		