

REMOTE CONTROLLER

OWNER'S MANUAL

IMPORTANT NOTE:

Thank you for purchasing our air conditioner. Please read this manual carefully before operating your new air conditioning unit. Make sure to save this manual for future reference.

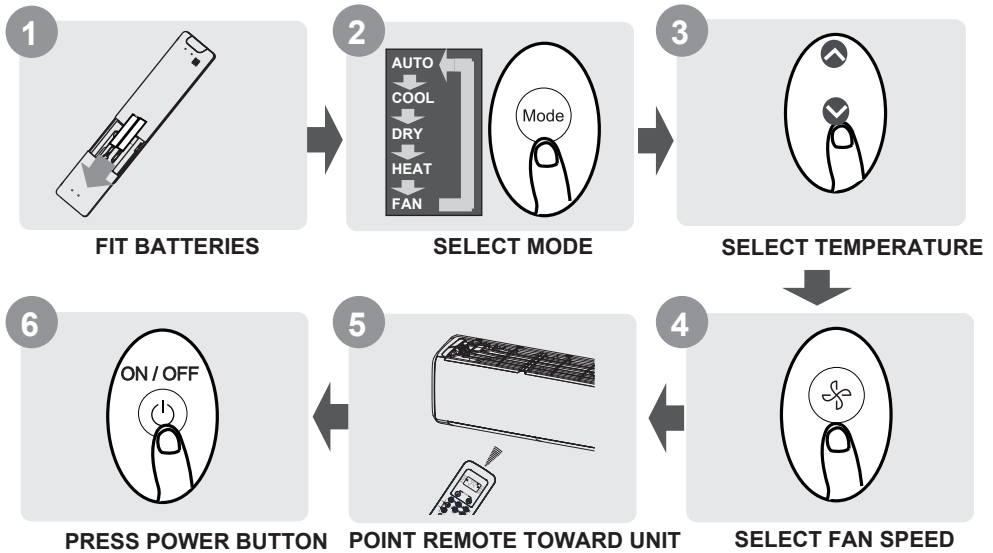
Table of Contents

Remote Controller Specifications	02
Handling the Remote Controller	03
Buttons and Functions	04
Remote Screen Indicators	07
How to Use Basic Functions	08
How to Use Advanced Functions	11

Remote Controller Specifications

Model	RG10F(D)/BGEF, RG10F1(D)/BGEF, RG10F2(D1)/BGEFU1, RG10F3(D1)/BGEFU1, RG10F(E)/BGEF, RG10F1(E)/BGEF, RG10F2(E1)/BGEFU1, RG10F3(E1)/BGEFU1, RG10F(F/G/H/S)/BGEF, RG10F1(F/G/H)/BGEF, RG10F2(F1/G1/H1)/BGEFU1, RG10F3(F1G1/H1)/BGEFU1
Rated Voltage	3.0V(Dry batteries R03/LR03×2)
Signal Receiving Range	8m
Environment	-5°C~60°C(23°F~140°F)

Quick Start Guide



NOT SURE WHAT A FUNCTION DOES?

Refer to the **How to Use Basic Functions** and **How to Use Advanced Functions** sections of this manual for a detailed description of how to use your air conditioner.

SPECIAL NOTE

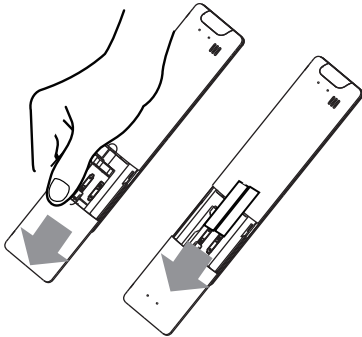
- Button designs on your unit may differ slightly from the example shown.
- If the indoor unit does not have a particular function, pressing that function's button on the remote control will have no effect.
- When there are wide differences between "Remote controller Manual" and "USER'S MANUAL" on function description, the description of "USER'S MANUAL" shall prevail.

Handling the Remote Controller

Inserting and Replacing Batteries

Your air conditioning unit may come with two batteries(some units). Put the batteries in the remote control before use.

1. Slide the back cover from the remote control downward, exposing the battery compartment.
2. Insert the batteries, paying attention to match up the (+) and (-) ends of the batteries with the symbols inside the battery compartment.
3. Slide the battery cover back into place.



! BATTERY NOTES

For optimum product performance:

- Do not mix old and new batteries, or batteries of different types.
- Do not leave batteries in the remote control if you don't plan on using the device for more than 2 months.



BATTERY DISPOSAL

Do not dispose of batteries as unsorted municipal waste. Refer to local laws for proper disposal of batteries.

TIPS FOR USING REMOTE CONTROL

- The remote control must be used within 8 meters of the unit.
- The unit will beep when remote signal is received.
- Curtains, other materials and direct sunlight can interfere with the infrared signal receiver.
- Remove batteries if the remote will not be used more than 2 months.

NOTES FOR USING REMOTE CONTROL

The device could comply with the local national regulations.

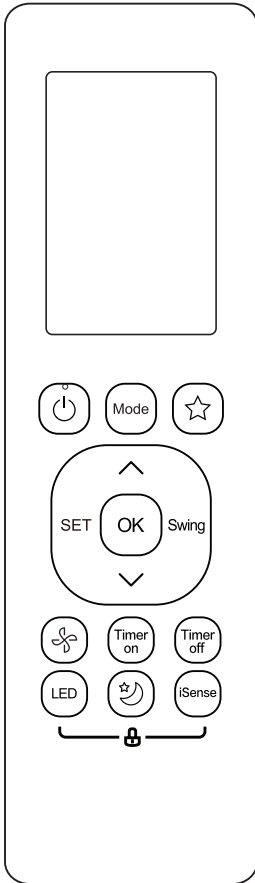
- In Canada, it should comply with CAN ICES-3(B)/NMB-3(B).
- In USA, this device complies with part 15 of the FCC Rules. Operation is subject to the following two conditions:
 - (1) This device may not cause harmful interference, and
 - (2) this device must accept any interference received, including interference that may cause undesired operation.

This equipment has been tested and found to comply with the limits for a Class B digital device, pursuant to part 15 of the FCC Rules. These limits are designed to provide reasonable protection against harmful interference in a residential installation. This equipment generates, uses and can radiate radio frequency energy and, if not installed and used in accordance with the instructions, may cause harmful interference to radio communications. However, there is no guarantee that interference will not occur in a particular installation. If this equipment does cause harmful interference to radio or television reception, which can be determined by turning the equipment off and on, the user is encouraged to try to correct the interference by one or more of the following measures:

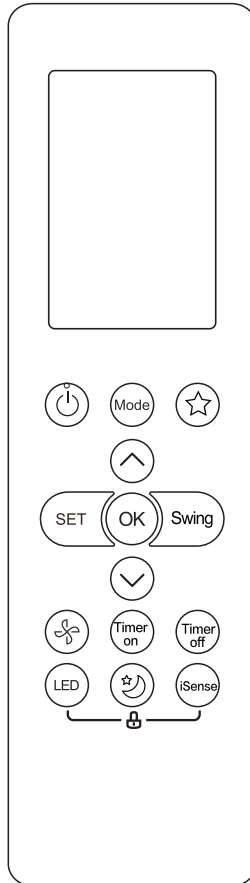
- Reorient or relocate the receiving antenna.
- Increase the separation between the equipment and receiver.
- Connect the equipment into an outlet on a circuit different from that to which the receiver is connected.
- Consult the dealer or an experienced radio/TV technician for help.
- Changes or modifications not approved by the party responsible for compliance could void user's authority to operate the equipment.

Buttons and Functions

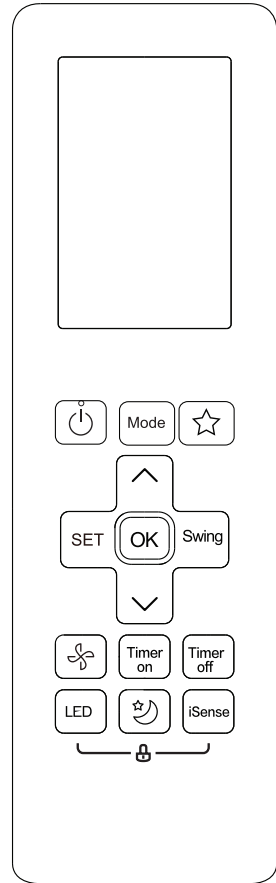
Before you begin using your new air conditioner, make sure to familiarize yourself with its remote control. The following is a brief introduction to the remote control itself. For instructions on how to operate your air conditioner, refer to the **How to Use Basic Functions** section of this manual.



RG10F(D)/BGEF
RG10F1(D)/BGEF



RG10F(E)/BGEF
RG10F1(E)/BGEF



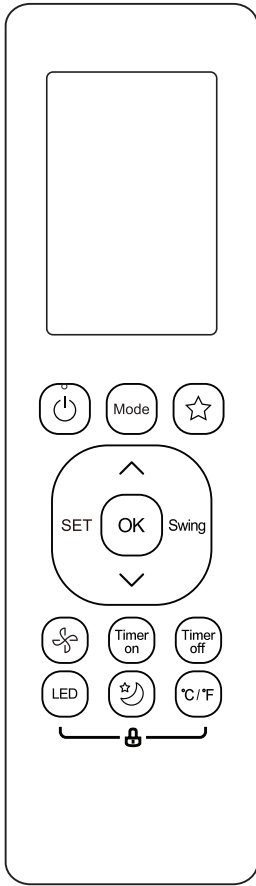
RG10F(F/G/H/S)/BGEF
RG10F1(F/G/H)/BGEF

NOTE: Press **SET** button to select the operation functions in the following order:

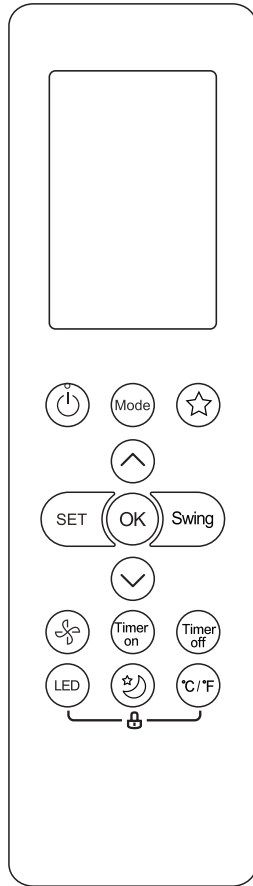
Fresh (🌿) → AP mode (📶) → Fresh...

The selected symbol will flash on the display area, press the OK button to confirm.

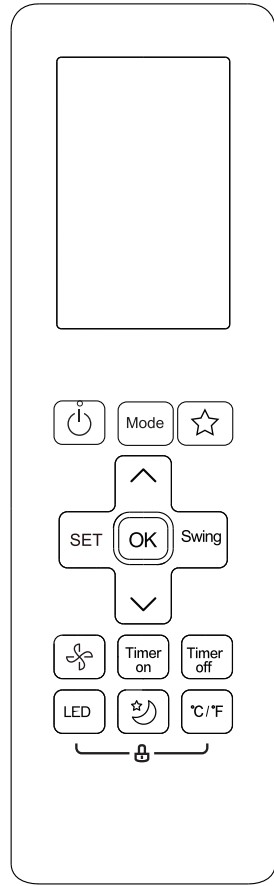
Fresh feature is not available for models of RG10F(D)/BGEF, RG10F(E)/BGEF and RG10F(F/G/H/S)/BGEF.



RG10F2(D1)/BGEFU1
RG10F3(D1)/BGEFU1



RG10F2(E1)/BGEFU1
RG10F3(E1)/BGEFU1



RG10F2(F1/G1/H1)/BGEFU1
RG10F3(F1/G1/H1)/BGEFU1

NOTE: Press **SET** button to select the operation functions in the following order:

Fresh(🌀) → I Sense (⊕) → AP mode(📶) → Fresh...

The selected symbol will flash on the display area, press the OK button to confirm.

Fresh feature is not available for models of RG10F2(D1)/BGEFU1,
RG10F2(E1)/BGEFU1 and RG10F2(F1/G1/H1)/BGEFU1.

ON/OFF

Turns the unit on or off.

TEMP ^

Increases temperature in 1 °C(1 °F) increments. Max. temperature is 30 °C(86 °F).

TEMP v

Decreases temperature in 1 °C(1 °F) increments. Max. temperature is 17 °C(62 °F).

FAN SPEED

Selects fan speeds in the following order:

AUTO → LOW → MED → HIGH

NOTE: Holding this button down for 2 seconds will activate Silence feature(some units).

TIMER ON

Sets timer to turn unit on (see How to Use Basic Functions for instructions).

MODE

Scrolls through operation modes as follows:

AUTO → COOL → DRY → HEAT → FAN

NOTE: HEAT mode is not supported by the cooling only appliance.

SHORTCUT

Used to restore the current settings or resume previous settings.

OK

Used to confirm the selected functions.

SWING

Starts and stops the horizontal louver movement. Hold down for 2 seconds to initiate vertical louver auto swing feature(some units).

TIMER OFF

Sets timer to turn unit off (see How to Use Basic Functions for instructions).

I SENSE

Temperature sensing and room temperature display button.

SLEEP

Saves energy during sleeping hours.

LED

Turns indoor unit's LED display and air conditioner buzzer(some units) on and off, which create a comfortable and quiet environment.

°C/°F

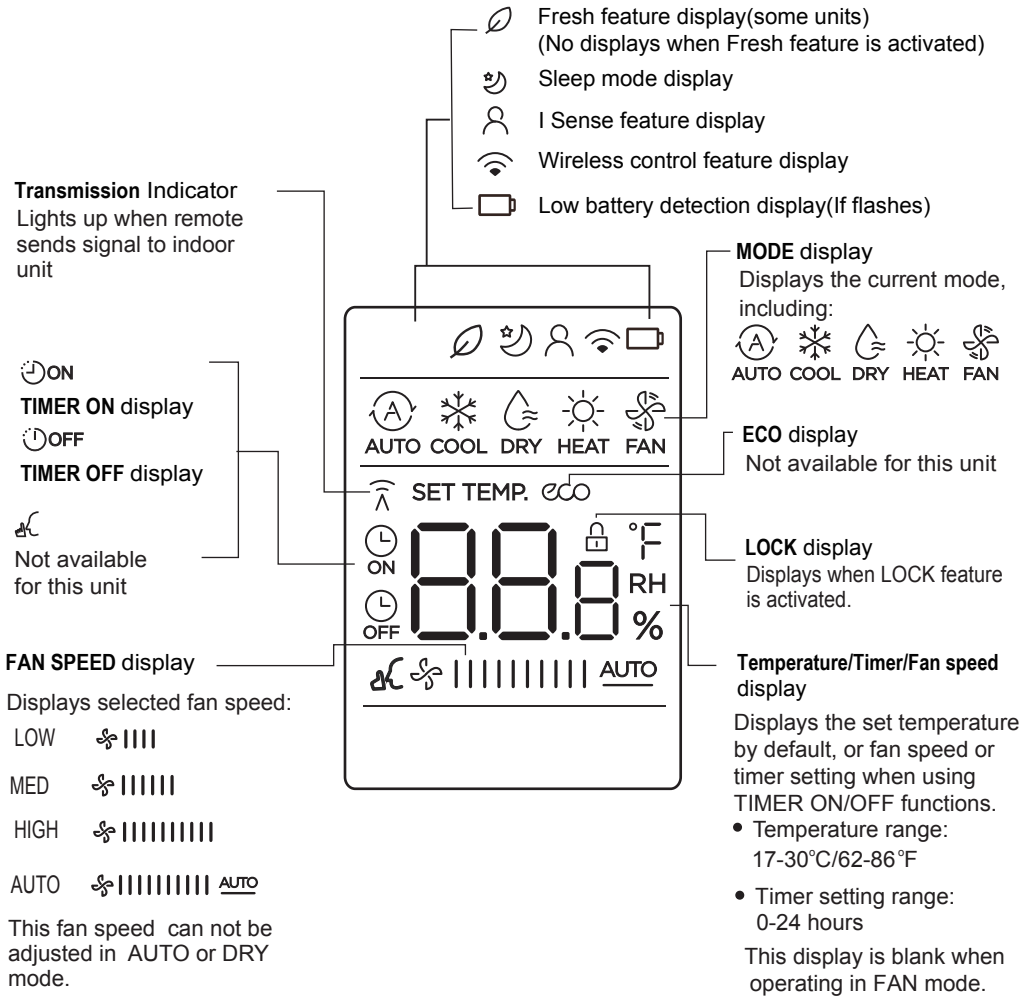
Press this button will alternate the temperature display between the °C & °F.

LOCK

Press together the two buttons simultaneously for 5 seconds to lock the keyboard. Press together the two buttons for 2 seconds to unlock the keyboard.

Remote Screen Indicators

Information are displayed when the remote controller is power up.



Note:

All indicators shown in the figure are for the purpose of clear presentation. But during the actual operation, only the relative function signs are shown on the display window.

How to Use Basic Functions

! ATTENTION Before operation, please ensure the unit is plugged in and power is available.

SETTING TEMPERATURE

The operating temperature range for units is 17-30°C (62-86°F). You can increase or decrease the set temperature in 1°C (1°F) increments.

AUTO Mode

Select AUTO mode



Set your desired temperature



Turn on the air conditioner

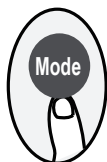


NOTE:

1. In AUTO mode, the unit will automatically select the COOL, FAN, or HEAT function based on the set temperature.
2. In AUTO mode, fan speed can not be set.

COOL or HEAT Mode

Select COOL/HEAT mode



Set the temperature



Set the fan speed



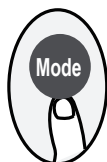
Turn on the air conditioner



NOTE: As outdoor temperature drops, the performance of your unit's HEAT function may be affected. In such instances, we recommend using this air conditioner in conjunction with other heating appliances.

DRY Mode

Select DRY mode



Set your desired temperature



Turn on the air conditioner



NOTE: In DRY mode, fan speed can not be set since it has already been automatically controlled.

FAN Mode

Select FAN mode



Set the fan speed



Turn on the air conditioner



NOTE: In FAN mode, you can't set the temperature. As a result, no temperature displays in remote screen.

Setting the TIMER

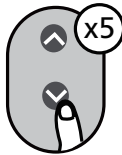
TIMER ON/OFF - Set the amount of time after which the unit will automatically turn on/off.

TIMER ON setting

Press TIMER ON button to initiate the ON time sequence.

Press Temp. up or down button for multiple times to set the desired time to turn on the unit.

Point remote to unit and wait 1sec, the TIMER ON will be activated.



TIMER OFF setting

Press TIMER OFF button to initiate the OFF time sequence.

Press Temp. up or down button for multiple times to set the desired time to turn off the unit.

Point remote to unit and wait 1sec, the TIMER OFF will be activated.

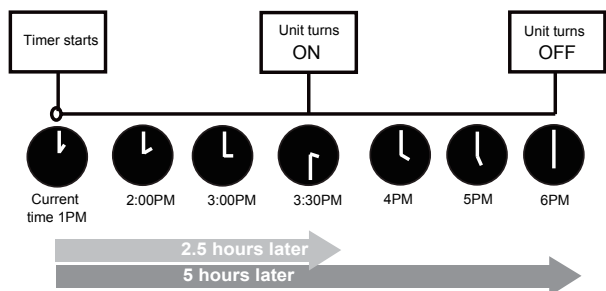
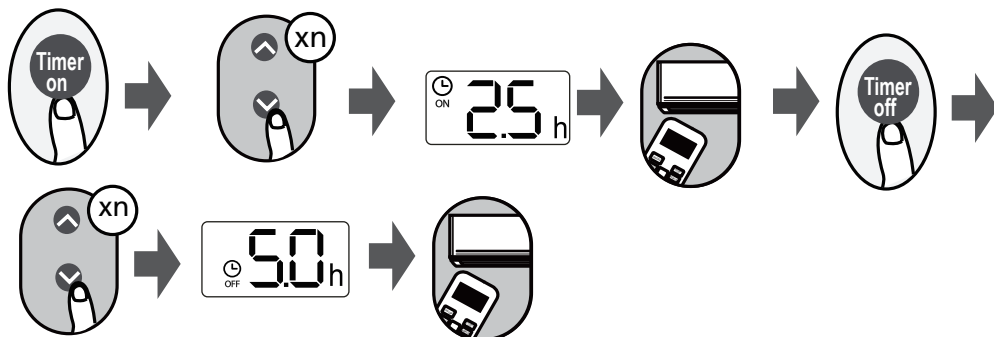


NOTE:

1. When setting the TIMER ON or TIMER OFF, the time will increase by 30 minutes increments with each press, up to 10 hours. After 10 hours and up to 24, it will increase in 1 hour increments. (For example, press 5 times to get 2.5h, and press 10 times to get 5h,) The timer will revert to 0.0 after 24.
2. Cancel either function by setting its timer to 0.0h.

TIMER ON & OFF setting(example)

Keep in mind that the time periods you set for both functions refer to hours after the current time.



Example: If current timer is 1:00PM, to set the timer as above steps, the unit will turn on 2.5h later (3:30PM) and turn off at 6:00PM.

How to Use Advanced Functions

Swing function

Press Swing button

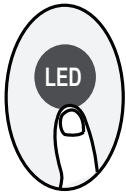


The horizontal louver will swing up and down automatically when pressing Swing button. Press again to make it stop.



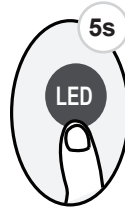
Keep pressing this button more than 2 seconds, the vertical louver swing function is activated. (Model dependent)

LED DISPLAY



Press LED button

Press this button to turn on and turn off the display on the indoor unit.



Press this button more than 5 seconds (some units)

Keep pressing this button more than 5 seconds, the indoor unit will display the actual room temperature. Press more than 5 seconds again will revert back to display the setting temperature.

FP function



The unit will operate at high fan speed (while compressor on) with temperature automatically set to 8°C/46°F.

Note: This function is for heat pump air conditioner only.

Press this button 2 times during one second under HEAT Mode and setting temperature of 17°C/62°F to activate FP function.

Press On/Off, Sleep, Mode, Fan and Temp. button while operating will cancel this function.

SHORTCUT function

Press SHORTCUT button(some units)



Push this button when remote controller is on, the system will automatically revert back to the previous settings including operating mode, setting temperature, fan speed level and sleep feature (if activated).

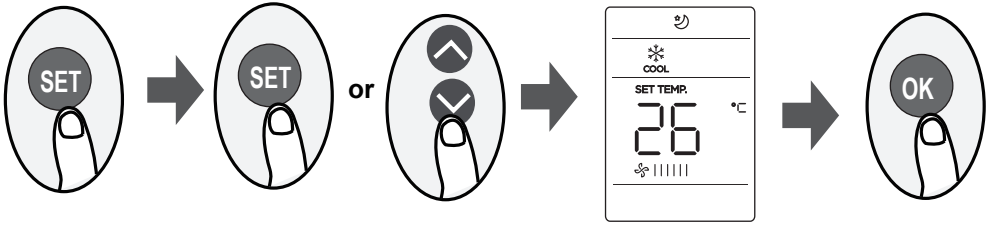
If pushing more than 2 seconds, the system will automatically restore the current operation settings including operating mode, setting temperature, fan speed level and sleep feature (if activated).

SLEEP function



The SLEEP function is used to decrease energy use while you sleep (and don't need the same temperature settings to stay comfortable). This function can only be activated via remote control. The sleep function is not available in Fan or Dry mode. Please refer to the OWNER'S MANUAL for more details.

SET function



- Press the SET button to enter the function setting, then press SET button or TEMP \downarrow or TEMP \wedge button to select the desired function. The selected symbol will flash on the display area, press the OK button to confirm.
- To cancel the selected function, just perform the same procedures as above.
- Press the SET button to scroll through operation functions as follows:
Fresh (\emptyset) \rightarrow I Sense* (⊗) \rightarrow AP mode (⊗)
[*]: If your remote controller has I Sense button, you can not use the SET button to select the I sense feature.

FRESH function(\emptyset) (some units) :

When the FRESH function is initiated, the ion generator is energized and will help to purify the air in the room.

AP function(⊗)(some units) :

Choose AP mode to do wireless network configuration. For some units, it doesn't work by pressing the SET button. To enter the AP mode, continuously press the LED button seven times in 10 seconds.

I Sense function(⊗):

The I Sense function enables the remote control to measure the temperature at its current location and send this signal to the air conditioner every 3 minutes interval. When using AUTO, COOL or HEAT modes, measuring ambient temperature from the remote control (instead of from the indoor unit itself) will enable the air conditioner to optimize the temperature around you and ensure maximum comfort.

NOTE: Press and hold I Sense button for seven seconds to start/stop memory feature of I Sense function. For the remote controls without I Sense button, press and hold SLEEP button for seven seconds to start/stop the memory feature of I Sense function.

- If the memory feature is activated, “On” displays for 3 seconds on the screen.
- If the memory feature is stopped, “OF” displays for 3 seconds on the screen.
- While the memory feature is activated, press the ON/OFF button, shift the mode or power failure will not cancel the I Sense function.

