

Wall Hanging Installation Manual

(Applicable to 6kg and 7kg models)

1. Accessories include components:

hooks (2), holders (2), expansion bolts (4), installation positioning paper (1), and installation manual (1).



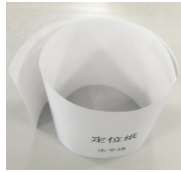
Hook



Holder



Expansion Bolt



Installation Positioning Paper

2. Hanging Procedure:

Step1: Confirm if all components are in the accessories.

Step2: Confirm the construction type of the wall and the suitable position for installation.

1.The wall must be solid concrete. Otherwise, it's forbidden to hang on wall. Knock the wall with the shank end of a rubber hammer. If the wall is solid concrete, the sound will be crisp; if it is cavity wall, the sound will be muffled. For the cavity wall, risk assessment before installation is necessary.

2.The distance in front of the wall must be more than 150cm.

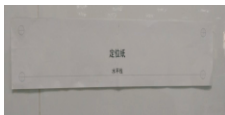
Step 3: Paste the installation positioning paper to the solid concrete wall.

a. Draw a line with a level, and paste the positioning paper based on the line; (Note: Ensure the screw holes will not overlap with the power outlets or taps nearby.)

b. The bottom edge of the positioning paper must be 45cm+ higher than the floor. Remove the adhesive paper behind the positioning paper, and paste the positioning paper to the wall horizontally.



Step 4: Drill holes for expansion bolts. The drill diameter is 14mm. Drill 4 holes according to the positioning paper drawing (hole depth 60mm). Find the hole mark on the positioning paper. Drill 4 holes orderly at the positioning paper hole mark with a $\Phi 14$ drill bit (use specially-made $\Phi 14$ drill bit to pre-drill for the walls with tiles).



Step 5: Fix the hook to wall. Fix the hook with an expansion bolt to the wall.

a. Take out the expansion bolt from the accessories. Insert the bolt and expansion tubular into the drilled holes. Insert one nut into the bolt. To prevent the thread being damaged, don't expose the end-thread of the bolt. Then hammer the 4 bolts into the holes orderly;



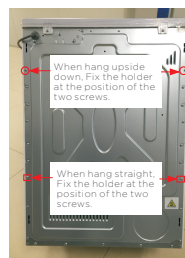
b. After the bolts are hammered into the wall, screw off the nuts and expose the bolts. Then insert one auxiliary tube to the bolt, and hammer the tube until the expansion tubular is flush with the wall surface. The expansion tubular is totally expanded then, and the expansion tubular installation is finished.



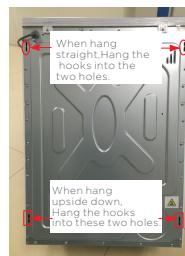
c. After finishing the expansion procedure, take out the hook and insert it to the bolt. Fasten the hook with a socket or a wrench.



Step 6: Fix the holder to the dryer machine. Place the unpackaged dryer machine on the floor. Unscrew the two screws* at the back of the machine with a cross screwdriver. Take out the holder in the kit. Press the screws* into the holes on the holder and then fasten them into the original screw holes.



Step 7:Lift the dryer machine with two persons and direct the slots at the back of the washing machine to the hooks. Then insert the hooks with some force to the slots.



Step 8:When all installation procedures are finished, try the machine with power on.

Wall Hanging Installation Manual

(Applicable to 3kg models)

1. Accessories include components:

hooks (2), holders (2), expansion bolts (4), installation positioning paper (1), and installation manual (1).



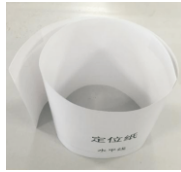
Hook



Holder



Expansion Bolt



Installation Positioning Paper

2. Hanging Procedure:

Step1: Confirm if all components are in the accessories.

Step2: Confirm the construction type of the wall and the suitable position for installation.

1.The wall must be solid concrete. Otherwise, it's forbidden to hang on wall. Knock the wall with the shank end of a rubber hammer. If the wall is solid concrete, the sound will be crisp; if it is cavity wall, the sound will be muffled. For the cavity wall, risk assessment before installation is necessary.

2.The distance in front of the wall must be more than 150cm.

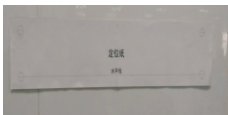
Step 3: Paste the installation positioning paper to the solid concrete wall.

a. Draw a line with a level, and paste the positioning paper based on the line; (Note: Ensure the screw holes will not overlap with the power outlets or taps nearby.)

b. The bottom edge of the positioning paper must be 45cm+ higher than the floor. Remove the adhesive paper behind the positioning paper, and paste the positioning paper to the wall horizontally.



Step 4: Drill holes for expansion bolts. The drill diameter is 14mm. Drill 4 holes according to the positioning paper drawing (hole depth 60mm). Find the hole mark on the positioning paper. Drill 4 holes orderly at the positioning paper hole mark with a $\Phi 14$ drill bit (use specially-made $\Phi 14$ drill bit to pre-drill for the walls with tiles).



Step 5: Fix the hook to wall. Fix the hook with an expansion bolt to the wall.

a. Take out the expansion bolt from the accessories. Insert the bolt and expansion tubular into the drilled holes. Insert one nut into the bolt. To prevent the thread being damaged, don't expose the end-thread of the bolt. Then hammer the 4 bolts into the holes orderly;



b. After the bolts are hammered into the wall, screw off the nuts and expose the bolts. Then insert one auxiliary tube to the bolt, and hammer the tube until the expansion tubular is flush with the wall surface. The expansion tubular is totally expanded then, and the expansion tubular installation is finished.



c. After finishing the expansion procedure, take out the hook and insert it to the bolt. Fasten the hook with a socket or a wrench.



Step 6: Fix the holder to the dryer machine. Place the unpackaged dryer machine on the floor. Unscrew the two screws* at the back of the machine with a cross screwdriver. Take out the holder in the kit. Press the screws* into the holes on the holder and then fasten them into the original screw holes.



Step7: Install the steering tube and lengthen air outlet pipe.

a. Take the steering tube and match with the air outlet on the backside(Adjust the tube nozzle according to the environment of user home). Clamping the steering tube into air outlet.



b. Match the lengthen air outlet pipe (the nozzle with the clamp slot) with steering tube. Turning lengthen air outlet pipe to clamp it with steering tube.



Step8: After installing the lengthen air outlet pipe, lift the dryer machine to match and clamp the hook on the wall into the clamping slot on the backside of dryer machine.



Step 9:When all installation procedures are finished, try the machine with power on.